



# WORLDWIDE ELECTRIC MOTOR DATA SHEET

## PEWWE200-12-505Z



HORSEPOWER	<b>200</b>		
RPM / POLES	<b>1200 / 6</b>		
VOLTAGE / PHASE	<b>460 V / 3</b>		
FRAME	<b>505Z</b>		
ENCLOSURE / DEGREE OF PROTECTION	<b>TEFC / IP55</b>		
FREQUENCY	<b>60 HZ</b>		
FULL LOAD SPEED	<b>1190 RPM</b>		
SERVICE FACTOR	<b>1.15</b>		
INSULATION CLASS	<b>F</b>		
FULL LOAD AMPS; 460	<b>225 A</b>		
LOCKED ROTOR AMPS (STARTING); 460	<b>1450 A</b>		
NO LOAD CURRENT	<b>70.0 A</b>		
NEMA CODE LETTER	<b>G</b>		
EFFICIENCY / POWER FACTOR	<u>LOAD</u>	<u>EFF.</u>	<u>P.F.</u>
	100%	95.8%	0.87
	75%	96.0%	0.85
	50%	95.9%	0.78
DUTY CYCLE	<b>CONTINUOUS</b>		
TORQUE	<u>FULL LOAD</u>	<u>LRT</u>	<u>BDT</u>
	882 lb.ft.	190%	250%
SLIP	<b>0.83%</b>		
NEMA DESIGN	<b>B</b>		
MOMENT OF INERTIA	<b>105 lb.ft.<sup>2</sup></b>		
SOUND PRESSURE LEVEL	<b>72 dB(A)</b>		
MAX. TIME LOCKED ROTOR (Hot)	<b>14 Seconds</b>		
MAX. AMBIENT TEMPERATURE	<b>40° C</b>		
MAX. ELEVATION	<b>3300 Ft. Above Sea Level</b>		
TEMPERATURE RISE (At Full Load)	<b>80° C</b>		
DE BEARING	<b>NU322</b>		
ODE BEARING	<b>6319</b>		
REGREASING INT. - DE BEARING	<b>2,100 Hours (1.82 oz.)</b>		
REGREASING INT. - ODE BEARING	<b>2,300 Hours (1.61 oz.)</b>		
GREASE TYPE	<b>Mobil Polyrex EM</b>		
MOUNTING	<b>F1</b>		
ROTATION	<b>Bi-Directional</b>		
C-FLANGE	---		
D-FLANGE	---		
SHAFT MATERIAL	<b>4140 Carbon Steel</b>		
CONNECTION DIAGRAM	<b>460 V - 6 Lead Δ</b>		
APPROXIMATE WEIGHT	<b>2470 lbs.</b>		
INVERTER RATING	<b>3:1 CT / 6:1 VT PWM Type</b>		



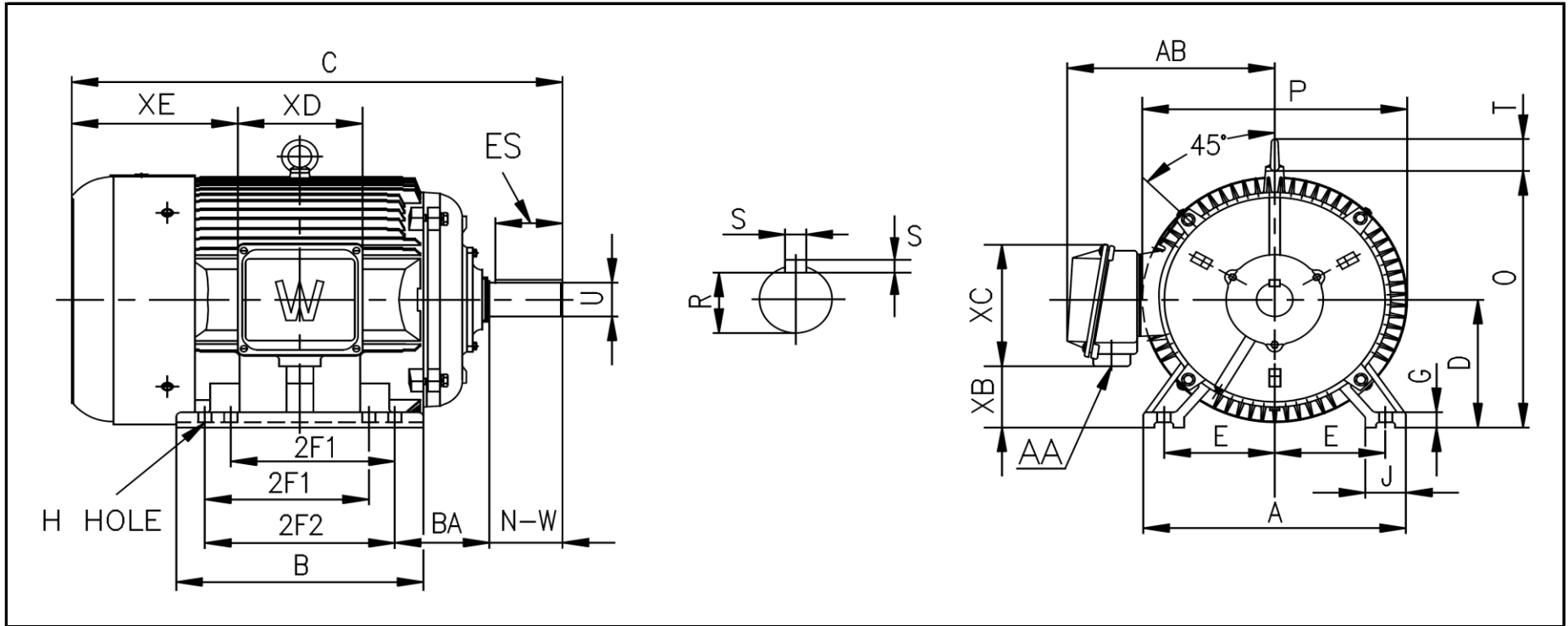
**CC006A**





# WORLDWIDE ELECTRIC MOTOR DRAWING

## PEWWE-505Z



**DIMENSIONS - INCHES**

MOUNTING					A	B	C	D	G	J	P	O	T	AB
E	2F1	2F2	H	BA										
10	16	18	0.94	8.5	24.72	26	54	12.5	1.87	4.72	25	25.3	4.25	21

KEY		KEYSET	SHAFT		TERMINAL BOX				
S	ES	R	N-W	U	AA	XB	XC	XD	XE
0.875	9	3.134	10.625	3.625	2 x 3"	5	13.8	11.8	---