



WORLDWIDE ELECTRIC MOTOR DATA SHEET

WWE40-36-324JP

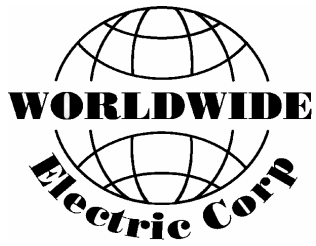


HORSEPOWER	40		
RPM / POLES	3600 / 2		
VOLTAGE / PHASE	230 / 460 V / 3		
FRAME	324JP		
ENCLOSURE / DEGREE OF PROTECTION	TEFC / IP54		
FREQUENCY	60 HZ Suitable For 50 HZ Operation With 1.0 SF		
FULL LOAD SPEED	3555 RPM		
SERVICE FACTOR	1.15		
INSULATION CLASS	F		
FULL LOAD AMPS; 230 / 460	92.6 / 46.3 A		
LOCKED ROTOR AMPS (STARTING); 230 / 460	580 / 290 A		
NO LOAD CURRENT	27.2 / 13.6 A		
NEMA CODE LETTER	G		
EFFICIENCY / POWER FACTOR	<u>LOAD</u>	<u>EFF.</u>	<u>P.F.</u>
	100%	91.7%	0.88
	75%	91.5%	0.86
	50%	89.4%	0.81
DUTY CYCLE	CONTINUOUS		
TORQUE	<u>FULL LOAD</u>	<u>LRT</u>	<u>BDT</u>
	59.5 lb.ft.	220%	300%
SLIP	1.25%		
NEMA DESIGN	B		
MOMENT OF INERTIA	3.21 lb.ft. ²		
MAX. TIME LOCKED ROTOR (Hot)	20 Seconds		
MAX. AMBIENT TEMPERATURE	40° C		
MAX. ELEVATION	3300 Ft. Above Sea Level		
TEMPERATURE RISE (At Full Load)	80° C		
DE BEARING	6312		
ODE BEARING	6311		
REGREASING INT. - DE BEARING	3,000 Hours (0.75 oz.)		
REGREASING INT. - ODE BEARING	3,500 Hours (0.64 oz.)		
GREASE TYPE	Mobil Polyrex EM		
MOUNTING	F1		
ROTATION	Bi-Directional		
SHAFT MATERIAL	1045 Carbon Steel		
CONNECTION DIAGRAM	230 / 460 V - 12 Lead Δ		
APPROXIMATE WEIGHT	533 Lbs.		



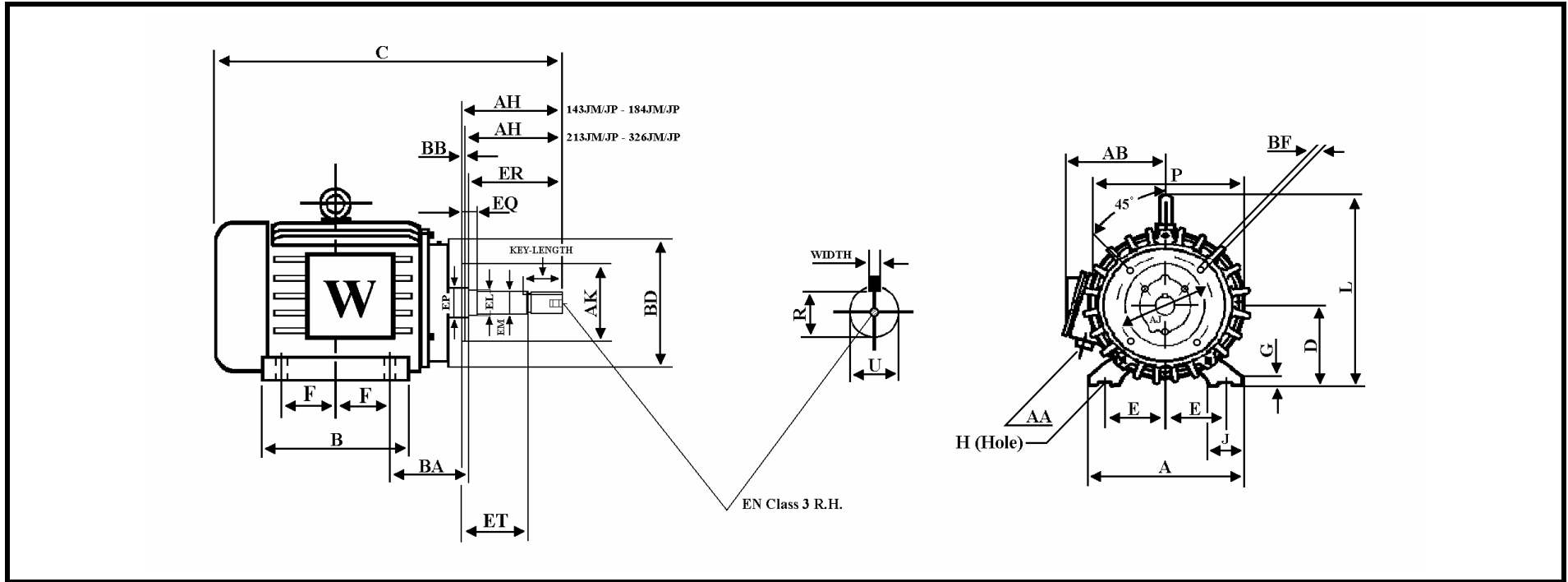
CC006A





CERTIFIED

NEMA FRAME 324JP



DIMENSIONS - Inches

MOUNTING				A	B	C	D	G	J	P	L	AH	AB	EQ	AA
E	F	H	BA												
6.25	5.25	0.66	5.25	16	14	32.56	8	0.984	2.76	15.55	18.35	8.125	13.4	2.375	2" NPT

KEY		KEYSET	U	FLANGE					ET	EM	EL	EP	ER	EN
WIDTH	LENGTH	R		AK	AJ	BF	BB	BD						
0.252	2.56	1.112	1.250	12.5	11	5/8-11	0.25	13.8	5.875	1.375	1.75	2.36	8.42	1/2-13