



PESS143TC1M-4-RB

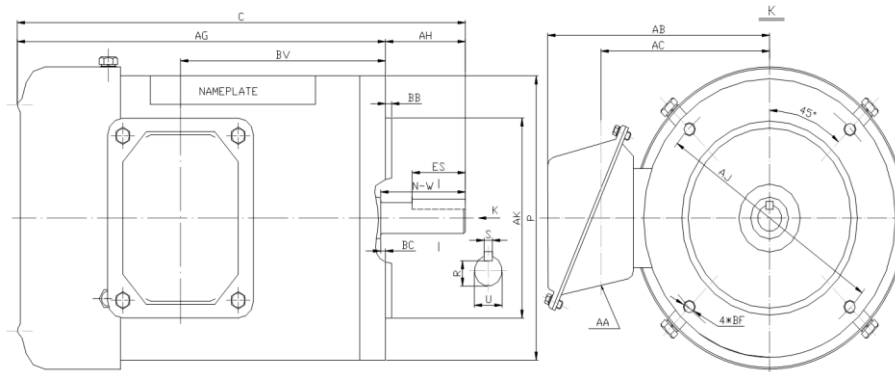
WASHDOWN DUTY MOTOR

NEMA PREMIUM EFFICIENCY

STAINLESS STEEL CONSTRUCTION - ROUND BODY (C-FLANGE FOOTLESS)

TOTALLY ENCLOSED FAN COOLED - IP66 CONSTRUCTION

INVERTER DUTY 10:1 CT; 20:1 VT - NEMA MG1 PART 31



DIMENSIONS

| HP | RPM | Frame | Mounting | | | | | | | | | |
|----|------|-------|----------|------|-------|-------|------|-------|-----|------|------|----------|
| | | | C | P | AK | AJ | AH | AG | BA | BB | BC | BF |
| 1 | 1800 | 143TC | 12.63 | 6.50 | 4.500 | 5.875 | 2.12 | 10.51 | N/A | 0.16 | 0.12 | 4*3/8-16 |

| Shaft Extension, Key Set | | | | | Conduit Box | | | | Bearings | | Mount |
|--------------------------|-------|-------|------|------|-------------|------|------|------|----------|----------|-------|
| U | R | S | ES | N-W | AA | AB | AC | BV | DE | ODE | |
| 0.875 | 0.771 | 0.188 | 1.41 | 2.25 | 0.86 | 5.75 | 4.25 | 6.30 | 6205-2RS | 6205-2RS | F1 |

BEARING LUBRICATION: The bearings come lubricated with Mobil Polyrex EM Polyurea Grease.





PESS143TC1M-4-RB

WASHDOWN DUTY MOTOR
NEMA PREMIUM EFFICIENCY
STAINLESS STEEL CONSTRUCTION - ROUND BODY (C-FLANGE FOOTLESS)
TOTALLY ENCLOSED FAN COOLED - IP66 CONSTRUCTION
INVERTER DUTY 10:1 CT; 20:1 VT - NEMA MG1 PART 31

PERFORMANCE DATA

| HP | RPM | Frame | Voltage | Frequency (Hz) | Full Load S.F. | Insulation Class | NEMA Design | Slip (%) | NEMA Code | Enclosure Type | IP Rating | Max. Ambient |
|----|------|-------|-------------|----------------|----------------|------------------|-------------|----------|-----------|----------------|-----------|--------------|
| 1 | 1740 | 143TC | 208-230/460 | 60 | 1.15 | F | B | 3.3 | K | TEFC | 66 | 40° C |

| Amps (460V) | | Efficiency (%) | | | | Power Factor | | | Torque (ft-lb) | | | DE Bearing | ODE Bearing | Connection | Weight (lbs.) |
|-------------|------|----------------|------|------|------|--------------|------|------|----------------|-------|-------|------------|-------------|-------------|---------------|
| FLA | LRA | 100% | 75% | 50% | Min. | 100% | 75% | 50% | FLT | LRT % | BDT % | | | | |
| 1.5 | 15.0 | 85.5 | 78.0 | 74.0 | 82.5 | 0.71 | 0.60 | 0.46 | 3.0 | 285 | 300 | 6205-2RS | 6205-2RS | 9 Lead 2Y/Y | 36 |

NAME PLATE

| | | | | | | | |
|---|------------------|-------|---------|---|-------------|----------------------------|--------|
| | | | | WASHDOWN DUTY STAINLESS STEEL MOTORS | | CONNECTION DIAGRAMS | |
| INVERTER DUTY 20:1 VT; 10:1 CT | | | | | | | |
| CAT NO: | PESS143TC1M-4-RB | FRAME | 143TC | PHASE | 3 | 208-230V | |
| HZ | 60 | S.F. | 1.15 | HZ | 50 | S.F. | 1.2 |
| ENCL | TEFC | IP | 66 | DUTY | CONT | DES | B |
| HP | 1 | RPM | 1740 | HP | 3/4 | RPM | 1450 |
| VOLTS | 208-230/460 | VOLTS | 190/380 | AMB | 40° C | INS | F |
| FLA | 3.1 - 3 / 1.5 | FLA | 3/1.5 | DE BEARING | 6205-2RS | | |
| CODE | K | P.F. | 0.71 | CODE | K | P.F. | 0.74 |
| ODE BEARING | 6205-2RS | | | | | | |
| EFF | 85.5 | MIN | 82.5 | EFF | 82.5 | MIN | 79.5 |
| LUB: | Mobil Polyrex EM | | | | | | |
| MOTOR WEIGHT | 36 | LBS | | CONNECTION | 9 Lead 2Y/Y | | SER NO |
| Special purpose motor designed for washdown applications and extremely corrosive environments. Hernando, Mississippi | | | | | | | |
| | | | | | | 460V | |
| | | | | | | CC 082A | |

APPLICATIONS:

Applications include washdown applications, food processing, chemical processing, pharmaceuticals, poultry processing, meat processing, dairy applications, bakeries, snack foods, bottling and extremely corrosive environments.