

**PE184T-2-6-575V**

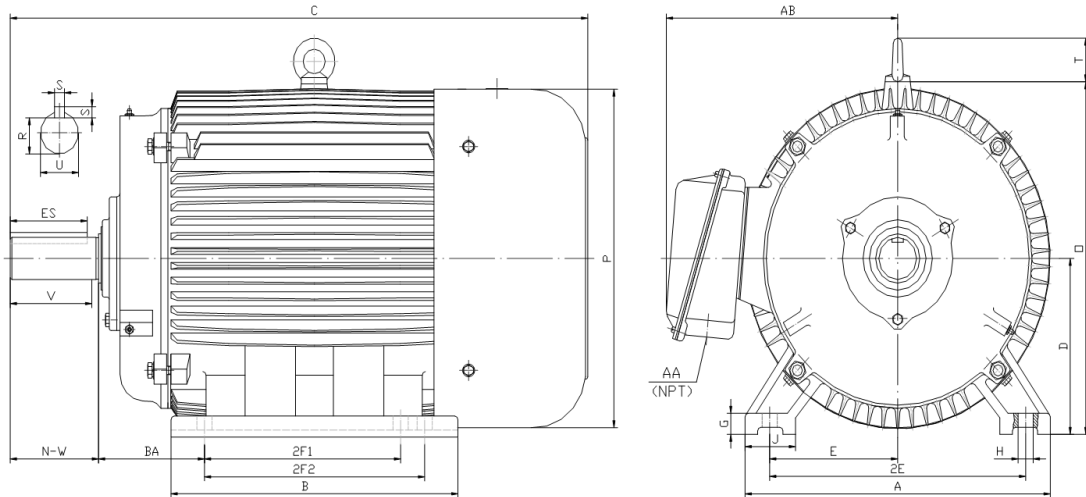
**GENERAL PURPOSE ELECTRIC MOTOR**

**NEMA PREMIUM EFFICIENCY**

**TOTALLY ENCLOSED FAN COOLED**

**INVERTER DUTY 10:1 CT; 20:1 VT - NEMA MG1 PART 31**

Factory Certified for T2B Class I, Division II, Groups A,B,C & D and Class II, Division II, Groups F & G



**DIMENSIONS**

HP	RPM	Frame	MOUNTING														
			A	B	C	D	G	H	J	E	2E	2F1	2F2	O	P	T	BA
2	1200	184T	9.50	8.30	17.10	4.50	0.60	0.41	2.00	3.75	7.50	4.50	5.50	9.10	8.70	1.60	2.75

Shaft Extension, Key Set						Conduit Box		Bearings		Mount
U	V	R	S	ES	N-W	AA	AB	DE	ODE	
1.13	2.50	0.99	0.25	1.78	2.75	0.75	7.50	6306-ZZ	6306-ZZ	F1

**BEARING LUBRICATION:** The bearings come lubricated with Mobil Polyrex EM Polyurea Grease.





**PE184T-2-6-575V**

**GENERAL PURPOSE ELECTRIC MOTOR**

**NEMA PREMIUM EFFICIENCY**

**TOTALLY ENCLOSED FAN COOLED**

**INVERTER DUTY 10:1 CT; 20:1 VT - NEMA MG1 PART 31**

Factory Certified for T2B Class I, Division II, Groups A,B,C & D and Class II, Division II, Groups F & G

**PERFORMANCE DATA**

HP	RPM	Frame	Voltage	Frequency (Hz)	Full Load S.F.	Insulation Class	NEMA Design	Slip (%)	NEMA Code	Enclosure Type	IP Rating	Max. Ambient
2	1180	184T	575	60	1.15	F	B	1.7	L	TEFC	55	40° C

Amps (575V)		Efficiency (%)				Power Factor			Torque (ft-lb)			DE Bearing	ODE Bearing	Connection	Weight (lbs.)
FLA	LRA	100%	75%	50%	Min.	100%	75%	50%	FLT	LRT %	BDT %				
2.4	20.0	88.5	88.0	86.4	86.5	0.700	0.620	0.500	9.1	190	280	6306-ZZ	6306-ZZ	3 Lead Y	103

**NAME PLATE**

				<p><b>CONNECTION DIAGRAM</b></p> <p>575 V Wye</p>					
<p>INVERTER DUTY 20:1 VT; 10:1 CT</p>									
CAT NO:	PE184T-2-6-575V	HP	2			Hz	60	PHASE	3
VOLTS	575	FLA	2.4			IP RATING	55		
RPM	1180	POWER FACTOR	0.70			DESIGN	B		
FRAME	184T	NEMA NOM EFF	88.5			CODE	L		
DRIVE END BEARING	6306-ZZ	NEMA MIN EFF	86.5			S.F.	1.15		
OPP DRIVE END BEARING	6306-ZZ	MAX AMB	40° C			INS CLASS	F		
ENCL	TEFC	RATING	CONT			SER			
MOTOR WEIGHT	103 LBS	CONNECTION	3 Lead Y			LUB:	Mobil Polyrex EM		
<p>General purpose use on industrial machinery installed in damp, dusty or dirty environments.</p> <p>Hernando, Mississippi</p>						CC 082A			

**APPLICATIONS:**

General purpose use on pumps, fans, blowers, compressors, conveyors, material handling and other industrial machinery installed in damp, dusty or dirty environments.