

**PE365T-50-6-575V**

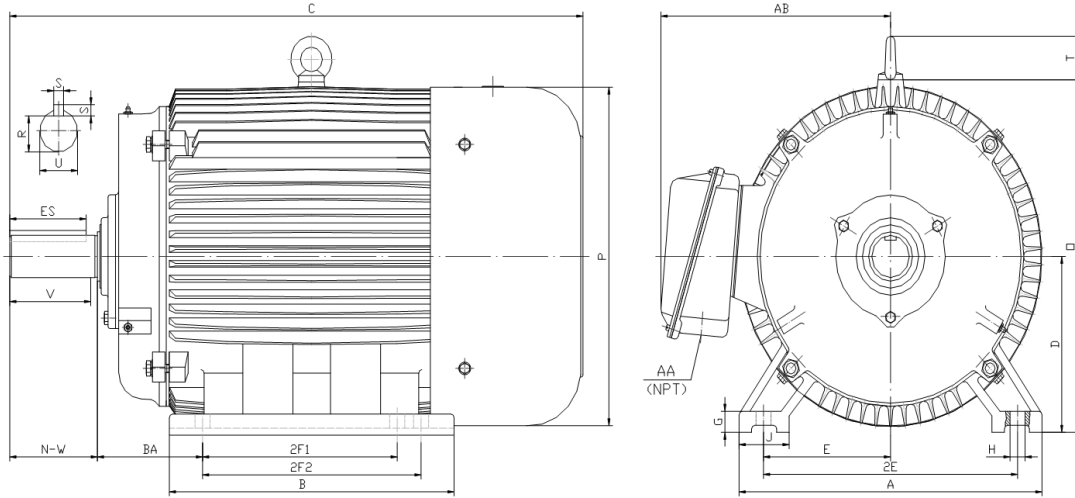
**GENERAL PURPOSE ELECTRIC MOTOR**

**NEMA PREMIUM EFFICIENCY**

**TOTALLY ENCLOSED FAN COOLED**

**INVERTER DUTY 10:1 CT; 20:1 VT - NEMA MG1 PART 31**

Factory Certified for T2B Class I, Division II, Groups A,B,C & D and Class II, Division II, Groups F & G



**DIMENSIONS**

HP	RPM	Frame	MOUNTING														
			A	B	C	D	G	H	J	E	2E	2F1	2F2	O	P	T	BA
50	1200	365T	17.10	15.40	33.50	9.00	1.10	0.66	2.95	7.00	14.00	11.25	12.25	18.50	18.40	2.60	5.88

Shaft Extension, Key Set						Conduit Box		Bearings		Mount
U	V	R	S	ES	N-W	AA	AB	DE	ODE	
2.38	5.62	2.02	0.63	4.28	5.88	3.00	15.00	6313	6313	F1

**BEARING LUBRICATION:** The bearings come lubricated with Mobil Polyrex EM Polyurea Grease. It is recommended that you add some additional lubrication when the motor is installed.

Three options (brands) for suitable lubrication include, but are not limited to, the following:

- 1.) Mobil Polyrex EM
- 2.) Citco Polyurea MP
- 3.) Conoco Phillips Polytac EP





**PE365T-50-6-575V**

**GENERAL PURPOSE ELECTRIC MOTOR**

**NEMA PREMIUM EFFICIENCY**

**TOTALLY ENCLOSED FAN COOLED**

**INVERTER DUTY 10:1 CT; 20:1 VT - NEMA MG1 PART 31**

Factory Certified for T2B Class I, Division II, Groups A,B,C & D and Class II, Division II, Groups F & G

**PERFORMANCE DATA**

HP	RPM	Frame	Voltage	Frequency (Hz)	Full Load S.F.	Insulation Class	NEMA Design	Slip (%)	NEMA Code	Enclosure Type	IP Rating	Max. Ambient
50	1187	365T	575	60	1.15	F	B	1.1	G	TEFC	55	40° C

Amps (575V)		Efficiency (%)				Power Factor			Torque (ft-lb)			DE Bearing	ODE Bearing	Connection	Weight (lbs.)
FLA	LRA	100%	75%	50%	Min.	100%	75%	50%	FLT	LRT %	BDT %				
49.6	290	94.1	94.2	93.8	93.0	0.790	0.760	0.670	222.6	150	260	6313	6313	6 Lead Δ	752

**NAME PLATE**

										<b>CONNECTION DIAGRAM</b>  <b>575 V Delta</b> 							
<b>INVERTER DUTY 20:1 VT; 10:1 CT</b>																	
CAT NO:		PE365T-50-6-575V			HP	50	Hz	60	PHASE	3							
VOLTS		575			FLA	49.6		IP RATING	55								
RPM	1187	POWER FACTOR			0.79		DESIGN	B									
FRAME	365T	NEMA NOM EFF			94.1		CODE	G									
DRIVE END BEARING	6313	NEMA MIN EFF			93.0		S.F.	1.15									
OPP DRIVE END BEARING	6313	MAX AMB			40° C		INS CLASS	F									
ENCL	TEFC	RATING	CONT	SER													
MOTOR WEIGHT	752 LBS	CONNECTION			6 Lead Δ		LUB:	Mobil Polyrex EM									
General purpose use on industrial machinery installed in damp, dusty or dirty environments. Hernando, Mississippi										CC 082A							

**APPLICATIONS:**

General purpose use on pumps, fans, blowers, compressors, conveyors, material handling and other industrial machinery installed in damp, dusty or dirty environments.