

PE284TS-25-2-575V

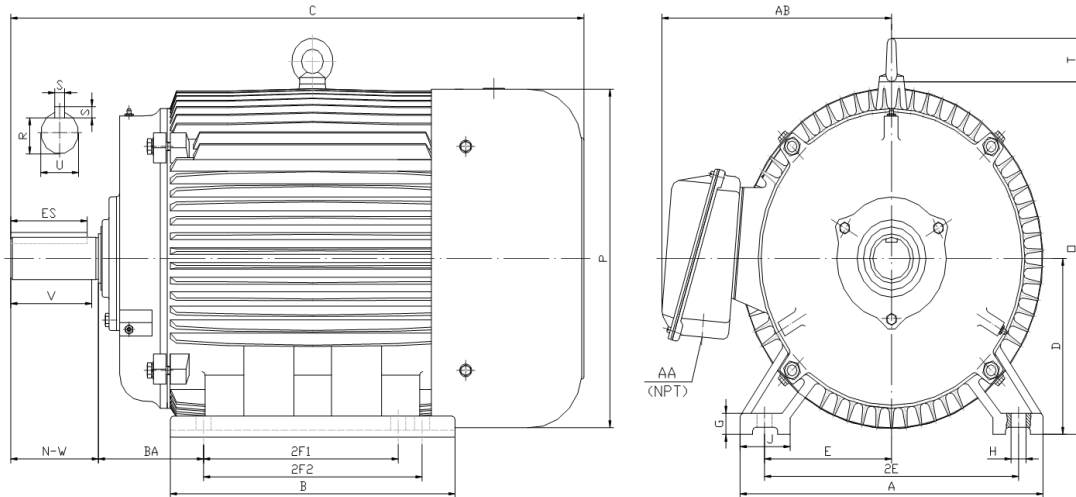
GENERAL PURPOSE ELECTRIC MOTOR

NEMA PREMIUM EFFICIENCY

TOTALLY ENCLOSED FAN COOLED

INVERTER DUTY 10:1 CT; 20:1 VT - NEMA MG1 PART 31

Factory Certified for T2B Class I, Division II, Groups A,B,C & D and Class II, Division II, Groups F & G



DIMENSIONS

HP	RPM	Frame	MOUNTING														
			A	B	C	D	G	H	J	E	2E	2F1	2F2	O	P	T	BA
25	3600	284TS	14.00	13.20	25.20	7.00	0.85	0.53	2.75	5.50	11.00	9.50	0.00	14.50	14.00	2.20	4.75

Shaft Extension, Key Set						Conduit Box		Bearings		Mount
U	V	R	S	ES	N-W	AA	AB	DE	ODE	
1.63	3.00	1.42	0.38	1.91	3.25	1.50	11.30	6311	6311	F1

BEARING LUBRICATION: The bearings come lubricated with Mobil Polyrex EM Polyurea Grease. It is recommended that you add some additional lubrication when the motor is installed.

Three options (brands) for suitable lubrication include, but are not limited to, the following:

- 1.) Mobil Polyrex EM
- 2.) Citco Polyurea MP
- 3.) Conoco Phillips Polytac EP





PE284TS-25-2-575V

GENERAL PURPOSE ELECTRIC MOTOR

NEMA PREMIUM EFFICIENCY

TOTALLY ENCLOSED FAN COOLED

INVERTER DUTY 10:1 CT; 20:1 VT - NEMA MG1 PART 31

Factory Certified for T2B Class I, Division II, Groups A,B,C & D and Class II, Division II, Groups F & G

PERFORMANCE DATA

HP	RPM	Frame	Voltage	Frequency (Hz)	Full Load S.F.	Insulation Class	NEMA Design	Slip (%)	NEMA Code	Enclosure Type	IP Rating	Max. Ambient
25	3540	284TS	575	60	1.15	F	B	1.7	G	TEFC	55	40° C

Amps (575V)		Efficiency (%)				Power Factor			Torque (ft-lb)			DE Bearing	ODE Bearing	Connection	Weight (lbs.)
FLA	LRA	100%	75%	50%	Min.	100%	75%	50%	FLT	LRT %	BDT %				
22.8	146	91.7	91.2	90.0	90.2	0.900	0.870	0.810	37.2	150	240	6311	6311	6 Lead Δ	385

NAME PLATE

									CONNECTION DIAGRAM 575 V Delta 					
INVERTER DUTY 20:1 VT; 10:1 CT														
CAT NO:		PE284TS-25-2-575V		HP	25	Hz	60	PHASE	3					
VOLTS		575		FLA	22.8		IP RATING		55					
RPM		3540		POWER FACTOR		0.90		DESIGN		B				
FRAME		284TS		NEMA NOM EFF		91.7		CODE		G				
DRIVE END BEARING		6311		NEMA MIN EFF		90.2		S.F.		1.15				
OPP DRIVE END BEARING		6311		MAX AMB		40° C		INS CLASS		F				
ENCL		TEFC		RATING	CONT	SER								
MOTOR WEIGHT		385 LBS		CONNECTION		6 Lead Δ		LUB:		Mobil Polyrex EM				
General purpose use on industrial machinery installed in damp, dusty or dirty environments. Hernando, Mississippi												CC 082A		

APPLICATIONS:

General purpose use on pumps, fans, blowers, compressors, conveyors, material handling and other industrial machinery installed in damp, dusty or dirty environments.