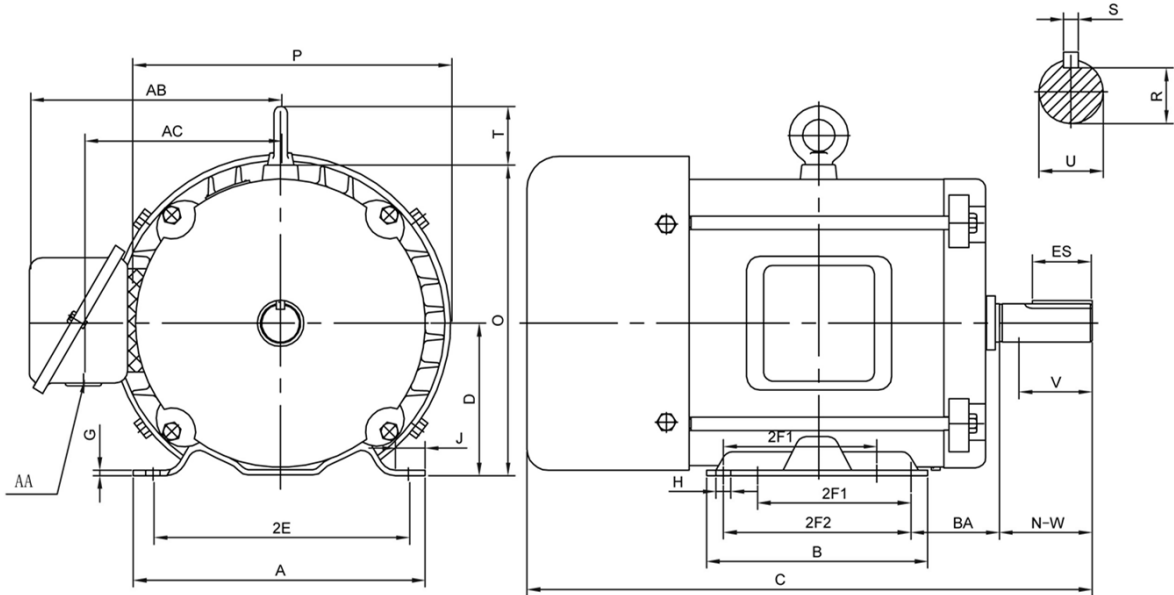


PR184T5M4A

**GENERAL PURPOSE ELECTRIC MOTOR
 NEMA PREMIUM EFFICIENCY
 TOTALLY ENCLOSED FAN COOLED
 ROLLED STEEL CONSTRUCTION
 INVERTER RATED (10:1 VT; 5:1 CT)**



DIMENSIONS

HP	RPM	Frame	MOUNTING														
			A	B	C	D	G	H	J	E	2E	2F1	2F2	O	P	T	BA
5	1800	184T	8.50	6.50	15.80	4.50	0.16	0.43	0.95	3.75	7.50	4.50	5.50	9.25	10.10	2.00	2.75

Shaft Extension, Key Set						Conduit Box		Bearings		Mount
U	V	R	S	ES	N-W	AA	AB	DE	ODE	
1.13	2.50	0.99	0.25	1.75	2.75	1.10	7.30	6206	6206	

BEARING LUBRICATION: The bearings come lubricated with Mobil Polyrex EM Polyurea Grease.





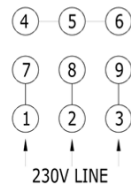
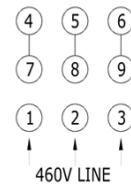




PR184T5M4A

**GENERAL PURPOSE ELECTRIC MOTOR
 NEMA PREMIUM EFFICIENCY
 TOTALLY ENCLOSED FAN COOLED
 ROLLED STEEL CONSTRUCTION
 INVERTER RATED (10:1 VT; 5:1 CT)**

PERFORMANCE DATA

HP	RPM	Frame	Voltage	Frequency (Hz)	Full Load S.F.	Insulation Class	NEMA Design	Slip (%)	NEMA Code	Enclosure Type	IP Rating	Max. Ambient
5	1740	184T	208-230/460	60	1.15	F	B	0.033	H	TEFC	IP44	40°C

Amps (460V)		Efficiency (%)			Power Factor			Torque (ft-lb)			DE Bearing	ODE Bearing	Connection	Weight (lbs.)
FLA	LRA	100%	75%	50%	100%	75%	50%	FLT	LRT %	BDT %				
6.5	43	88.3	89	88.4	0.81	0.77	0.66	20.47	220	314	6206-2RZC3	6206-2RZC3	9 Lead Y	91

NAME PLATE											
 North American Electric, Inc.						GENERAL PURPOSE  NEMA Premium TOTALLY ENCLOSED FAN COOLED					
THREE PHASE ELECTRIC MOTOR											
MODEL	HP	5	RPM	1740	FRAME	184T					
PR184T5M4A	ENCL	TEFC	HZ	60	PHASE	3					
VOLT	208-230/460	AMPS	13.5-12.4/6.2	S.F.	1.15	DESIGN	B				
S.F. AMPS	15.5-14.3/7.1	CLASS	F	CODE	H	LBS	91				
DE BEARING	6206-2RZC3										
ODE BEARING	6206-2RZC3										
RATING	CONT	MAX AMB.	40°C								
SER											
Hernando, MS www.naemotors.com											

APPLICATIONS:

General purpose use on pumps, fans, blowers, compressors, conveyors, material handling and other industrial machinery installed in damp, dusty or dirty environments.