

**PE365T-40-8C**

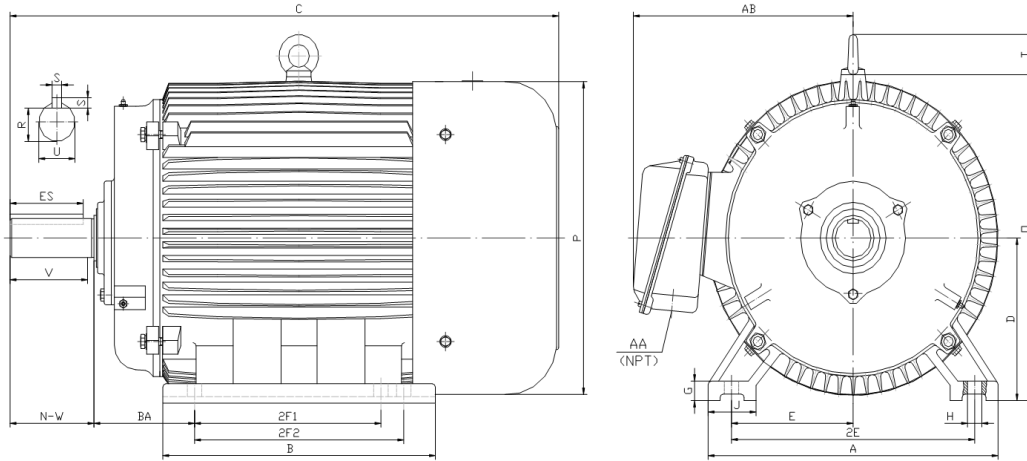
GENERAL PURPOSE ELECTRIC MOTOR

NEMA PREMIUM EFFICIENCY

TOTALLY ENCLOSED FAN COOLED

INVERTER DUTY 10:1 CT; 20:1 VT - NEMA MG1 PART 31

Factory Certified for T2B Class I, Division II, Groups A,B,C & D and Class II, Division II, Groups F & G



**DIMENSIONS**

HP	RPM	Frame	MOUNTING														
			A	B	C	D	G	H	J	E	2E	2F1	2F2	O	P	T	BA
40	900	365T	17.10	15.40	33.50	9.00	1.15	0.66	2.95	7.00	14.00	11.25	12.25	18.10	17.60	2.60	5.88

Shaft Extension, Key Set						Conduit Box		Bearings		Mount
U	V	R	S	ES	N-W	AA	AB	DE	ODE	
2.375	5.62	2.021	0.625	4.28	5.88	3.00	14.60	6313	6313	F1

**BEARING LUBRICATION:** The bearings come lubricated with Mobil Polyrex EM Polyurea Grease. It is recommended that you add some additional lubrication when the motor is installed.

Three options (brands) for suitable lubrication include, but are not limited to, the following:

- 1.) Mobil Polyrex EM
- 2.) Citco Polyurea MP
- 3.) Conoco Phillips Polytac EP





## PE365T-40-8C

GENERAL PURPOSE ELECTRIC MOTOR

NEMA PREMIUM EFFICIENCY

TOTALLY ENCLOSED FAN COOLED

INVERTER DUTY 10:1 CT; 20:1 VT - NEMA MG1 PART 31



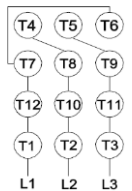
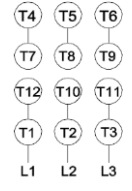



Factory Certified for T2B Class I, Division II, Groups A,B,C & D and Class II, Division II, Groups F & G

### PERFORMANCE DATA

HP	RPM	Frame	Voltage	Frequency (Hz)	Full Load S.F.	Insulation Class	NEMA Design	Slip (%)	NEMA Code	Enclosure Type	IP Rating	Max. Ambient
40	885	365T	208-230/460	60	1.15	F	C	1.7	G	TEFC	55	40° C

Amps (460V)		Efficiency (%)				Power Factor			Torque (ft-lb)			DE Bearing	ODE Bearing	Connection	Weight (lbs.)
FLA	LRA	100%	75%	50%	Min.	100%	75%	50%	FLT	LRT %	BDT %				
52.5	290	91.7	91.0	90.0	90.2	0.780	0.660	0.540	238.0	200	240	6313	6313	12 Lead 2Δ/Δ	719

### NAME PLATE

 <b>North American Electric, Inc.</b>													<b>CONNECTION DIAGRAMS</b> <b>208-230V</b> 			
<b>INVERTER DUTY 20:1 VT; 10:1 CT</b>																
CAT NO:		PE365T-40-8C				FRAME		365T		PHASE		3		<b>460V</b> 		
HZ		60		S.F.		1.15		HZ		50		S.F.				
ENCL		TEFC		IP		55		HP		40		RPM		740		
DUTY		CONT		DES		C		VOLTS		208-230/460		VOLTS		190/380		
AMB		40° C		INS		F		FLA		115 - 105 / 52.5		FLA		126/63		
DE BEARING		6313		CODE		G		P.F.		0.78		CODE		F		
P.F.		0.80		ODE BEARING		6313		EFF		91.7		MIN		90.2		
EFF		89.7		MIN		88.2		LUB:		Mobil Polyrex EM		MOTOR WEIGHT		719 LBS		
CONNECTION		12 Lead 2Δ/Δ		SER NO				General purpose use on industrial machinery installed in damp, dusty or dirty environments.		  		CC 082A		Hernando, Mississippi		

### APPLICATIONS:

General purpose use on pumps, fans, blowers, compressors, conveyors, material handling and other industrial machinery installed in damp, dusty or dirty environments.