

PE286T-15-8C

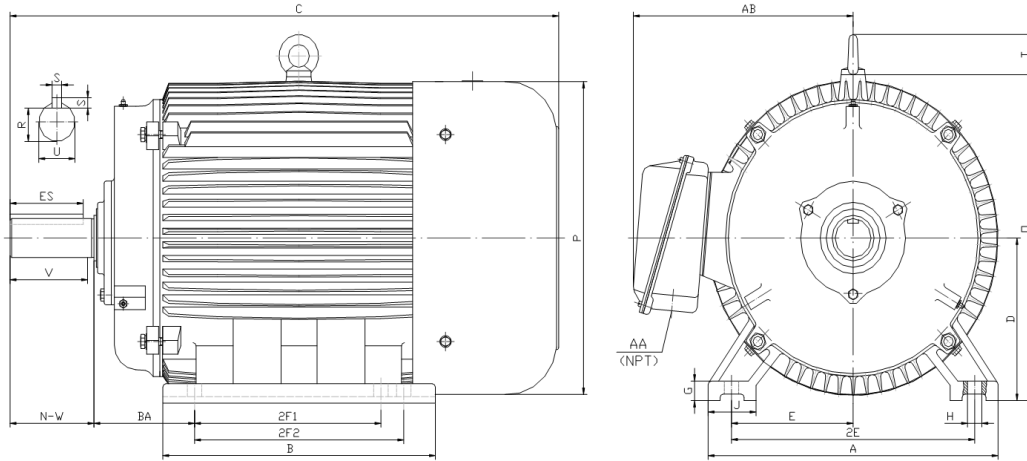
GENERAL PURPOSE ELECTRIC MOTOR

NEMA PREMIUM EFFICIENCY

TOTALLY ENCLOSED FAN COOLED

INVERTER DUTY 10:1 CT; 20:1 VT - NEMA MG1 PART 31

Factory Certified for T2B Class I, Division II, Groups A,B,C & D and Class II, Division II, Groups F & G



DIMENSIONS

HP	RPM	Frame	MOUNTING														
			A	B	C	D	G	H	J	E	2E	2F1	2F2	O	P	T	BA
15	900	286T	14.00	13.20	28.10	7.00	0.85	0.53	2.75	5.50	11.00	9.50	11.00	14.50	14.00	2.20	4.75

Shaft Extension, Key Set						Conduit Box		Bearings		Mount
U	V	R	S	ES	N-W	AA	AB	DE	ODE	
1.875	4.38	1.591	0.500	3.28	4.62	1.50	11.30	6311	6311	F1

BEARING LUBRICATION: The bearings come lubricated with Mobil Polyrex EM Polyurea Grease. It is recommended that you add some additional lubrication when the motor is installed.

Three options (brands) for suitable lubrication include, but are not limited to, the following:

- 1.) Mobil Polyrex EM
- 2.) Citco Polyurea MP
- 3.) Conoco Phillips Polytac EP





PE286T-15-8C

GENERAL PURPOSE ELECTRIC MOTOR

NEMA PREMIUM EFFICIENCY

TOTALLY ENCLOSED FAN COOLED

INVERTER DUTY 10:1 CT; 20:1 VT - NEMA MG1 PART 31



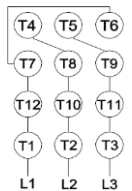
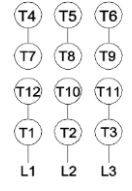



Factory Certified for T2B Class I, Division II, Groups A,B,C & D and Class II, Division II, Groups F & G

PERFORMANCE DATA

HP	RPM	Frame	Voltage	Frequency (Hz)	Full Load S.F.	Insulation Class	NEMA Design	Slip (%)	NEMA Code	Enclosure Type	IP Rating	Max. Ambient
15	880	286T	208-230/460	60	1.15	F	C	2.2	G	TEFC	55	40° C

Amps (460V)		Efficiency (%)					Power Factor			Torque (ft-lb)			DE Bearing	ODE Bearing	Connection	Weight (lbs.)
FLA	LRA	100%	75%	50%	Min.	100%	75%	50%	FLT	LRT %	BDT %					
21.5	116	89.5	89.0	87.5	87.5	0.730	0.590	0.450	89.5	200	280	6311	6311	12 Lead 2Δ/Δ	352	

NAME PLATE

 North American Electric, Inc.													CONNECTION DIAGRAMS 208-230V 				
INVERTER DUTY 20:1 VT; 10:1 CT																	
CAT NO:		PE286T-15-8C				FRAME		286T		PHASE		3		460V 			
HZ		60		S.F.		1.15		HZ		50		S.F.					1.0
ENCL		TEFC		IP		55		HP		15		RPM		880			
HP		15		RPM		880		HP		15		RPM		735			
DUTY		CONT		DES		C		VOLTS		208-230/460		VOLTS		190/380			
AMB		40° C		INS		F		FLA		47 - 43 / 21.5		FLA		51.6/25.8			
DE BEARING		6311		CODE		G		P.F.		0.73		CODE		F			
ODE BEARING		6311		EFF		89.5		MIN		87.5		EFF		87.5			
MIN		87.5		EFF		87.5		MIN		85.5		LUB:		Mobil Polyrex EM			
MOTOR WEIGHT		352		LBS		CONNECTION		12 Lead 2Δ/Δ		SER NO							
General purpose use on industrial machinery installed in damp, dusty or dirty environments. Hernando, Mississippi																CC 082A	

APPLICATIONS:

General purpose use on pumps, fans, blowers, compressors, conveyors, material handling and other industrial machinery installed in damp, dusty or dirty environments.