

PE182T-1-8C

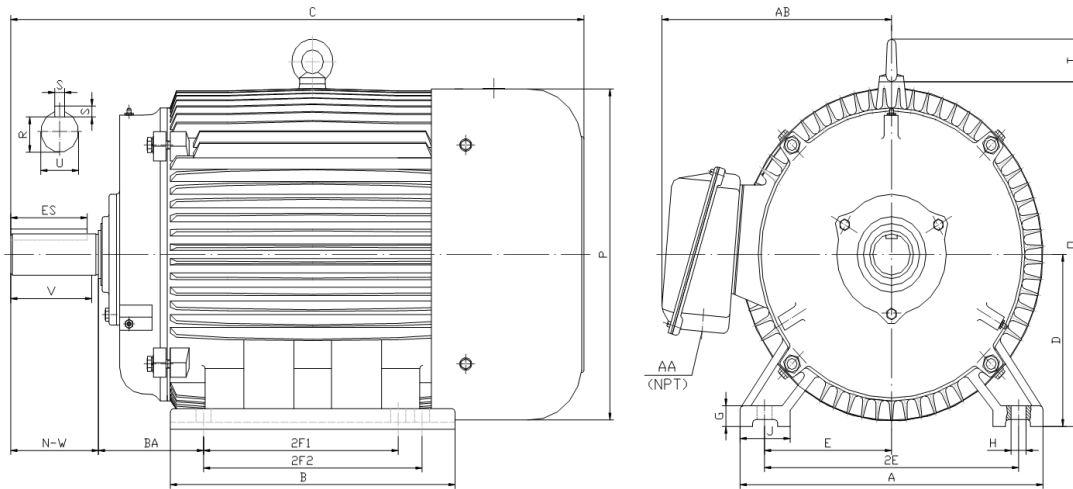
GENERAL PURPOSE ELECTRIC MOTOR

NEMA PREMIUM EFFICIENCY

TOTALLY ENCLOSED FAN COOLED

INVERTER DUTY 10:1 CT; 20:1 VT - NEMA MG1 PART 31

Factory Certified for T2B Class I, Division II, Groups A,B,C & D and Class II, Division II, Groups F & G



DIMENSIONS

HP	RPM	Frame	MOUNTING														
			A	B	C	D	G	H	J	E	2E	2F1	2F2	O	P	T	BA
1	900	182T	9.50	7.30	15.10	4.50	0.60	0.41	2.00	3.75	7.50	4.50	0.00	9.10	8.70	1.60	2.75

Shaft Extension, Key Set						Conduit Box		Bearings		Mount
U	V	R	S	ES	N-W	AA	AB	DE	ODE	
1.125	2.50	0.986	0.250	1.78	2.75	0.75	7.50	6306-ZZ	6306-ZZ	F1

BEARING LUBRICATION: The bearings come lubricated with Mobil Polyrex EM Polyurea Grease.





PE182T-1-8C

GENERAL PURPOSE ELECTRIC MOTOR

NEMA PREMIUM EFFICIENCY

TOTALLY ENCLOSED FAN COOLED

INVERTER DUTY 10:1 CT; 20:1 VT - NEMA MG1 PART 31



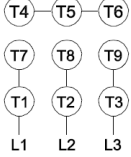



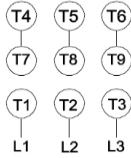
Factory Certified for T2B Class I, Division II, Groups A,B,C & D and Class II, Division II, Groups F & G

PERFORMANCE DATA

HP	RPM	Frame	Voltage	Frequency (Hz)	Full Load S.F.	Insulation Class	NEMA Design	Slip (%)	NEMA Code	Enclosure Type	IP Rating	Max. Ambient
1	870	182T	208-230/460	60	1.15	F	C	3.3	M	TEFC	55	40° C

Amps (460V)		Efficiency (%)				Power Factor			Torque (ft-lb)			DE Bearing	ODE Bearing	Connection	Weight (lbs.)
FLA	LRA	100%	75%	50%	Min.	100%	75%	50%	FLT	LRT %	BDT %				
1.9	15	75.5	74.0	70.0	72.0	0.660	0.550	0.420	6.1	230	320	6306-ZZ	6306-ZZ	9 Lead 2Y/Y	67

NAME PLATE

 North American Electric, Inc.														CONNECTION DIAGRAMS 208-230V 			
INVERTER DUTY 20:1 VT; 10:1 CT																	
CAT NO:		PE182T-1-8C				FRAME		182T		PHASE		3					
HZ	60	S.F.	1.15	HZ	50	S.F.	1.0	ENCL	TEFC	IP	55						
HP	1	RPM	870	HP	1	RPM	730	DUTY	CONT	DES	C						
VOLTS		208-230/460				VOLTS		190/380		AMB	40° C	INS	F				
FLA	4.2 - 3.8 / 1.9		FLA				4.6/2.3		DE BEARING		6306-ZZ						
CODE	M	P.F.	0.66	CODE	K	P.F.	0.68	ODE BEARING		6306-ZZ							
EFF	75.5	MIN	72.0	EFF	72.5	MIN	68.5	LUB:		Mobil Polyrex EM							
MOTOR WEIGHT		67	LBS	CONNECTION		9 Lead 2Y/Y		SER NO									
General purpose use on industrial machinery installed in damp, dusty or dirty environments. Hernando, Mississippi														   CC 082A			
										460V 							

APPLICATIONS:

General purpose use on pumps, fans, blowers, compressors, conveyors, material handling and other industrial machinery installed in damp, dusty or dirty environments.