

PE405T-75-6C

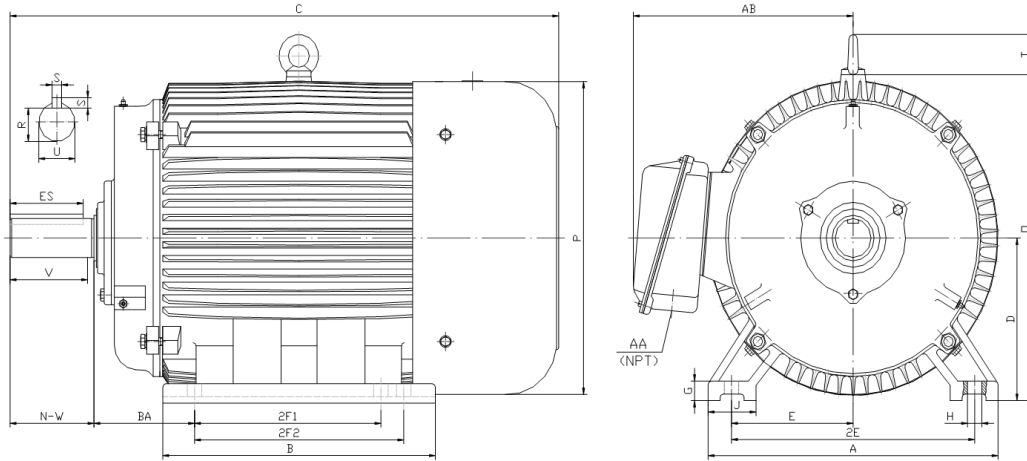
GENERAL PURPOSE ELECTRIC MOTOR

NEMA PREMIUM EFFICIENCY

TOTALLY ENCLOSED FAN COOLED

INVERTER DUTY 10:1 CT; 20:1 VT - NEMA MG1 PART 31

Factory Certified for T2B Class I, Division II, Groups A,B,C & D and Class II, Division II, Groups F & G



DIMENSIONS

HP	RPM	Frame	MOUNTING														
			A	B	C	D	G	H	J	E	2E	2F1	2F2	O	P	T	BA
75	1200	405T	19.30	17.90	38.00	10.00	1.25	0.81	3.15	8.00	16.00	12.25	13.75	21.10	21.60	2.60	6.62

Shaft Extension, Key Set						Conduit Box		Bearings		Mount
U	V	R	S	ES	N-W	AA	AB	DE	ODE	
2.875	7.00	2.450	0.750	5.65	7.25	3.00	16.60	NU318	6314	F1

BEARING LUBRICATION: The bearings come lubricated with Mobil Polyrex EM Polyurea Grease. It is recommended that you add some additional lubrication when the motor is installed.

Three options (brands) for suitable lubrication include, but are not limited to, the following:

- 1.) Mobil Polyrex EM
- 2.) Citco Polyurea MP
- 3.) Conoco Phillips Polytac EP





PE405T-75-6C

GENERAL PURPOSE ELECTRIC MOTOR

NEMA PREMIUM EFFICIENCY

TOTALLY ENCLOSED FAN COOLED

INVERTER DUTY 10:1 CT; 20:1 VT - NEMA MG1 PART 31



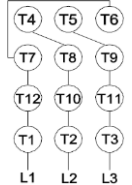
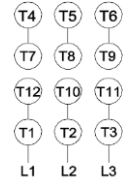



Factory Certified for T2B Class I, Division II, Groups A,B,C & D and Class II, Division II, Groups F & G

PERFORMANCE DATA

HP	RPM	Frame	Voltage	Frequency (Hz)	Full Load S.F.	Insulation Class	NEMA Design	Slip (%)	NEMA Code	Enclosure Type	IP Rating	Max. Ambient
75	1190	405T	208-230/460	60	1.15	F	C	0.8	G	TEFC	55	40° C

Amps (460V)		Efficiency (%)				Power Factor			Torque (ft-lb)			DE Bearing	ODE Bearing	Connection	Weight (lbs.)
FLA	LRA	100%	75%	50%	Min.	100%	75%	50%	FLT	LRT %	BDT %	NU318	6314	12 Lead 2Δ/Δ	1140
87.0	542	94.5	94.8	94.5	93.6	0.830	0.820	0.760	335.0	200	240				

NAME PLATE

 North American Electric, Inc.													CONNECTION DIAGRAMS 208-230V 													
INVERTER DUTY 20:1 VT; 10:1 CT																										
CAT NO:		PE405T-75-6C				FRAME		405T		PHASE		3		460V 												
HZ		60		S.F.		1.15		HZ		50		S.F.					1.0		ENCL		TEFC		IP		55	
HP		75		RPM		1190		HP		75		RPM					990		DUTY		CONT		DES		C	
VOLTS		208-230/460				VOLTS		190/380		AMB		40° C					INS		F							
FLA		193 - 174 / 87				FLA		216/108				DE BEARING					NU318									
CODE		G		P.F.		0.83		CODE		F		P.F.					0.84		ODE BEARING				6314			
EFF		94.5		MIN		93.6		EFF		93		MIN					92.1		LUB:				Mobil Polyrex EM			
MOTOR WEIGHT		1140		LBS		CONNECTION		12 Lead 2Δ/Δ		SER NO																
General purpose use on industrial machinery installed in damp, dusty or dirty environments. Hernando, Mississippi																			CC 082A							

APPLICATIONS:

General purpose use on pumps, fans, blowers, compressors, conveyors, material handling and other industrial machinery installed in damp, dusty or dirty environments.