

Product Information Packet

January 12, 2017

Data shown is for the current revision model #. Ensure your nameplate model # matches.

Model Number:	5KS509SAA268A
Catalog Number:	Q594
Instruction Manual:	GEI-56128
Connection Diagram:	GEM2034E-FIG25
Outline Drawing:	239C6A00HF

Accessory Connection Diagrams			
Bearing Thermocouple:	None	Heater:	3027JE-1C
RTD:	None	Thermistor:	None
Thermostat:	None	Winding Thermocouple:	None
Bearing RTD:	None		

Table of Contents	
Specification	01
Performance Characteristics	02
Outline Drawing	03
Connection Drawing(s)	04



Marks:

MODEL NUMBER:	5KS509SAA268A	Estimated Weight:	4534 Lbs
Outline Drawing:	239C6A00HF	Time Rating:	CONT
Connection Diagram:	GEM2034E-FIG25	Enclosure:	TEFC
Instruction Book:	GEI-56128	Encl Construction:	SD
Design Code:	50BD1162B	Ambient Max(°C):	40
Type:	KS	Alt Ambient Max(°C):	--
Frame:	509L	Insulation Class:	F
Phases:	3	NEMA Design:	B
Poles:	4	Nominal Efficiency:	96.2 %
Output Power:	400HP 296KW	Guaranteed Efficiency:	95.4
RPM:	1785	3/4 Load Efficiency:	96.5
Voltage:	575	KVA Code:	G
Hertz:	60	Max KVAR:	87.5
Amps - FL:	352.0	Power Factor:	88.5
Service Factor:	1.15	Bearing - DE:	NU 320
Alt Service Factor:	--	Bearing - ODE:	6315ZC3

Enclosure is Totally Enclosed Fan-Cooled

Stamped Nameplate Notes:

HTR LDS HE1-HE2 115V 350W
 INVERTER DUTY PER NEMA MG1 PART 31
 ALTERNATE RATING FOR PWM CONTROL:1.0SF 40C AMBIENT
 VAR TORQUE RANGE 0-60 HZ
 ROLLER BEARING - FOR BELTED LOAD ONLY

Additional Information:

4P - L EXTN - SPLIT LEAD
 1260 CU IN - 2(4.00" NPT)
 C/B GRD PLATE
 B5F4C4 HIGH STRENGTH STEEL AISI 4142 SHAFT MATERIAL
 115V HTR LDS TO AUX BOX OPP MAIN CONDUIT BOX
 SPACE HEATER CAUTION NAMEPLATE
 NEMA TYPE GRD PAD
 F1 MOUNTING
 SHAFT BLOCKING FOR SHIPMENT
 PROVISION FOR BTD ON BOTH ENDS PLUGGED

Performance Characteristics

1st Winding 1st Connection

Design: 50BD1162B

Marks:

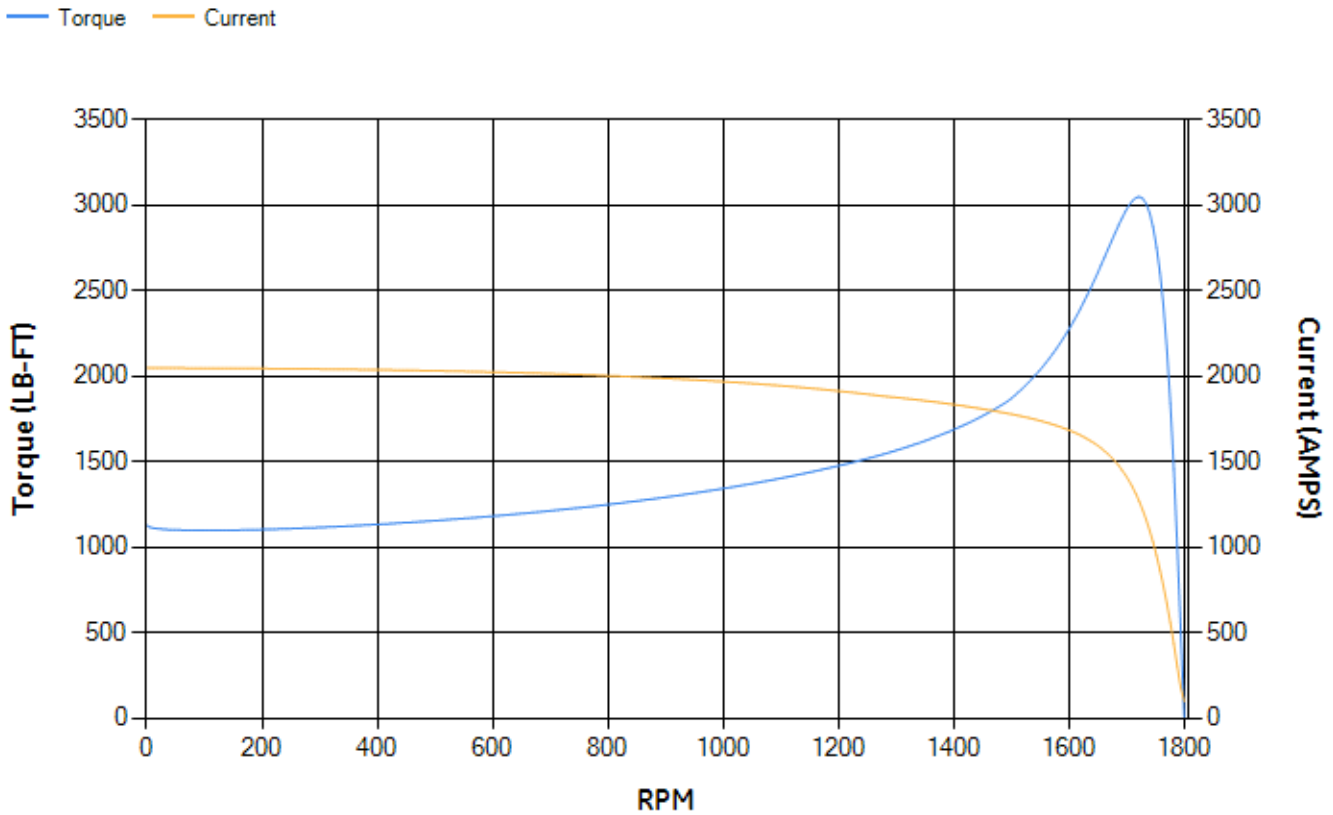
LOAD %	125.0	115.0	100.0	75.0	50.0	25.0	0.0
% EFF	96.02	96.18	96.57	96.5	96.17	94.19	0.00
% PF	88.89	88.9	88.56	86.54	80.42	61.13	4.17
AMPS	438.61	402.81	350.46	268.98	193.62	130.03	97.67

TORQ(FL)#FT	1176.31	TORQ(LR)%FL	95.8	TORQ(BD)%FL	258.79
AMPS(LR)	2046.08	PF AT START	0.21		

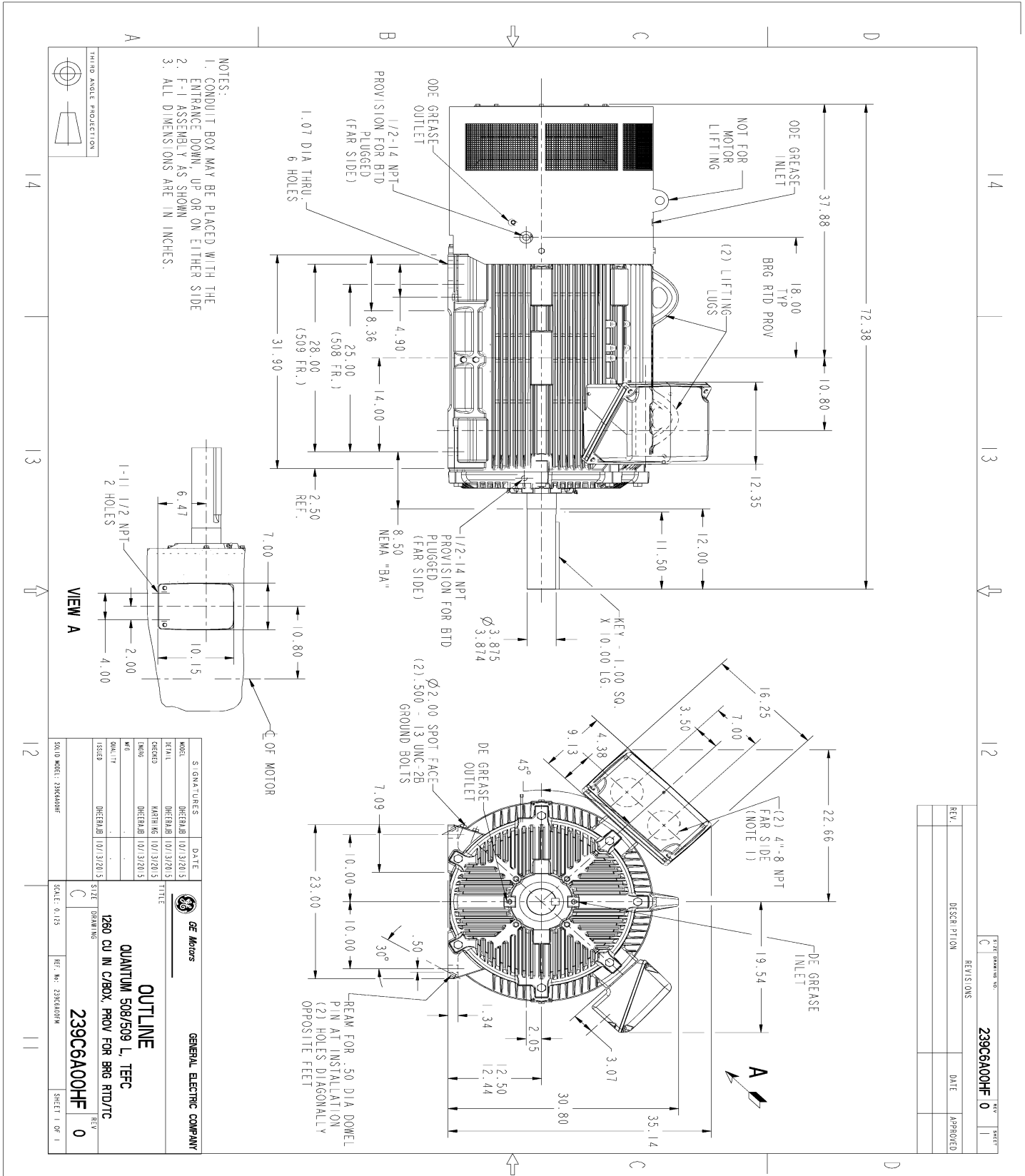
This motor is capable of two cold or one hot start with a maximum connected load inertia of 8632 Lb-Ft Sq (363.41 Kg-meter Sq)at 100% voltage, where the load torque varies with the square of the speed. Acceleration time with maximum inertia and the above load type is 47 seconds. Safe stall time at 100% voltage is 91 seconds cold, 57 seconds hot. Rotor inertia is 131.51 Lb-Ft Sq (5.54 Kg-meter Sq).

Open Circuit A-C:	1.152	Short Circuit D-C:	0.043
Short Circuit A-C:	0.05	X/R Ratio:	16.197
Stator Slots:	72	Rotor Slots:	58

Speed Torque Current Curve (First Connection, First Speed)



Marks:



REV.	DESCRIPTION	DATE	APPROVED

SIGNATURES	DATE	REV	SHEET
DESIGNED BY: DIERHAB	10/13/2015	0	1
CHECKED BY: KAHN NG	10/13/2015		
DRAWN BY: DIERHAB	10/13/2015		
ISSUED BY: DIERHAB	10/13/2015		

GENERAL ELECTRIC COMPANY

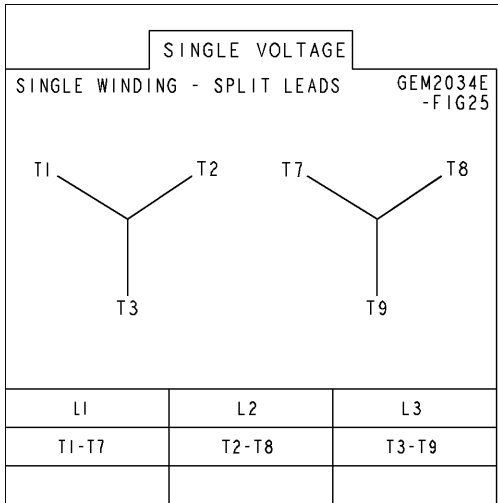
OUTLINE
 QUANTUM 508/509 L, TFCC
 1260 CU IN C/BOX, PROV FOR BRG RTD/TC

239C6A00HF

SCALE: 0.125 REF. NO. 239C6A00HF SHEET 1 OF 1

Marks:

Connection Diagram
GEM2034E-FIG25



Heater Connection
3027JE-1C

