

Product Information Packet

January 12, 2017

Data shown is for the current revision model #. Ensure your nameplate model # matches.

Model Number:	5KS513SAA177A
Catalog Number:	Q567
Instruction Manual:	GEI-56128
Connection Diagram:	GEM2034E-FIG2
Outline Drawing:	239C6C00GV

Accessory Connection Diagrams

Bearing Thermocouple:	None	Heater:	3027JE-1C
RTD:	235A3027XY	Thermistor:	None
Thermostat:	None	Winding Thermocouple:	None
Bearing RTD:	235A3027NA		

Table of Contents

Specification	01
Performance Characteristics	02
Outline Drawing	03
Connection Drawing(s)	04



imagination at work

Marks:

MODEL NUMBER:	5KS513SAA177A	Estimated Weight:	6917 Lbs
Outline Drawing:	239C6C00GV	Time Rating:	CONT
Connection Diagram:	GEM2034E-FIG2	Enclosure:	TEFC
Instruction Book:	GEI-56128	Encl Construction:	SD
Design Code:	50BD0153E	Ambient Max(°C):	40
Type:	KS	Alt Ambient Max(°C):	--
Frame:	5013ST	Insulation Class:	F
Phases:	3	NEMA Design:	--
Poles:	2	Nominal Efficiency:	95.8 %
Output Power:	700HP 518KW	Guaranteed Efficiency:	95.0
RPM:	3565	3/4 Load Efficiency:	96.4
Voltage:	2300/4000	KVA Code:	G
Hertz:	60	Max KVAR:	76.2
Amps - FL:	144.7/83.2	Power Factor:	94.5
Service Factor:	1.00	Bearing - DE:	6315ZC3
Alt Service Factor:	--	Bearing - ODE:	6315ZC3

Enclosure is Totally Enclosed Fan-Cooled

Stamped Nameplate Notes:

HTR LDS HE1-HE2 115V 350W
 ROT CW FACING ODE LEAD/PH SEQUENCE 1-2-3/1-2-3
 FOR DIRECT COUPLED LOAD ONLY

Additional Information:

2P - ST EXTN
 2500 CU IN - 2(4.00" NPT)
 100 OHM WINDING RTD LEADS TO AUX C/BOX OPP MAIN C/BOX
 SUGGESTED WINDING RTD SETTINGS
 ALARM 155C TRIP 165C
 115V HTR LDS TO AUX BOX OPP MAIN CONDUIT BOX
 SPACE HEATER CAUTION NAMEPLATE
 BEARING RTD 100 OHM ON BOTH ENDS
 SUGGESTED BEARING RTD SETTINGS
 ALARM 115C TRIP 125C
 NEMA TYPE GRD PAD
 F1 MOUNTING

Performance Characteristics

1st Winding 1st Connection

Design: 50BD0153E**Marks:**

LOAD %	125.0	115.0	100.0	75.0	50.0	25.0	0.0
% EFF	95.51	95.74	96.24	96.39	96.35	94.92	0.00
% PF	94.27	94.49	94.68	94.4	92.43	82.78	6.56
AMPS	104.6	95.77	82.56	62.1	42.3	23.97	12.21

TORQ(FL)#FT 1030.39
AMPS(LR) 590.21

TORQ(LR)%FL 111.05
PF AT START 0.17

TORQ(BD)%FL 303.3

This motor is capable of two cold or one hot start with a maximum connected load inertia of 1099 Lb-Ft Sq (46.27 Kg-meter Sq) at 100% voltage, where the load torque varies with the square of the speed. Acceleration time with maximum inertia and the above load type is 17 seconds. Safe stall time at 100% voltage is 44 seconds cold, 20 seconds hot. Rotor inertia is 158.26 Lb-Ft Sq (6.66 Kg-meter Sq).

Open Circuit A-C: 1.971

Short Circuit D-C: 0.037

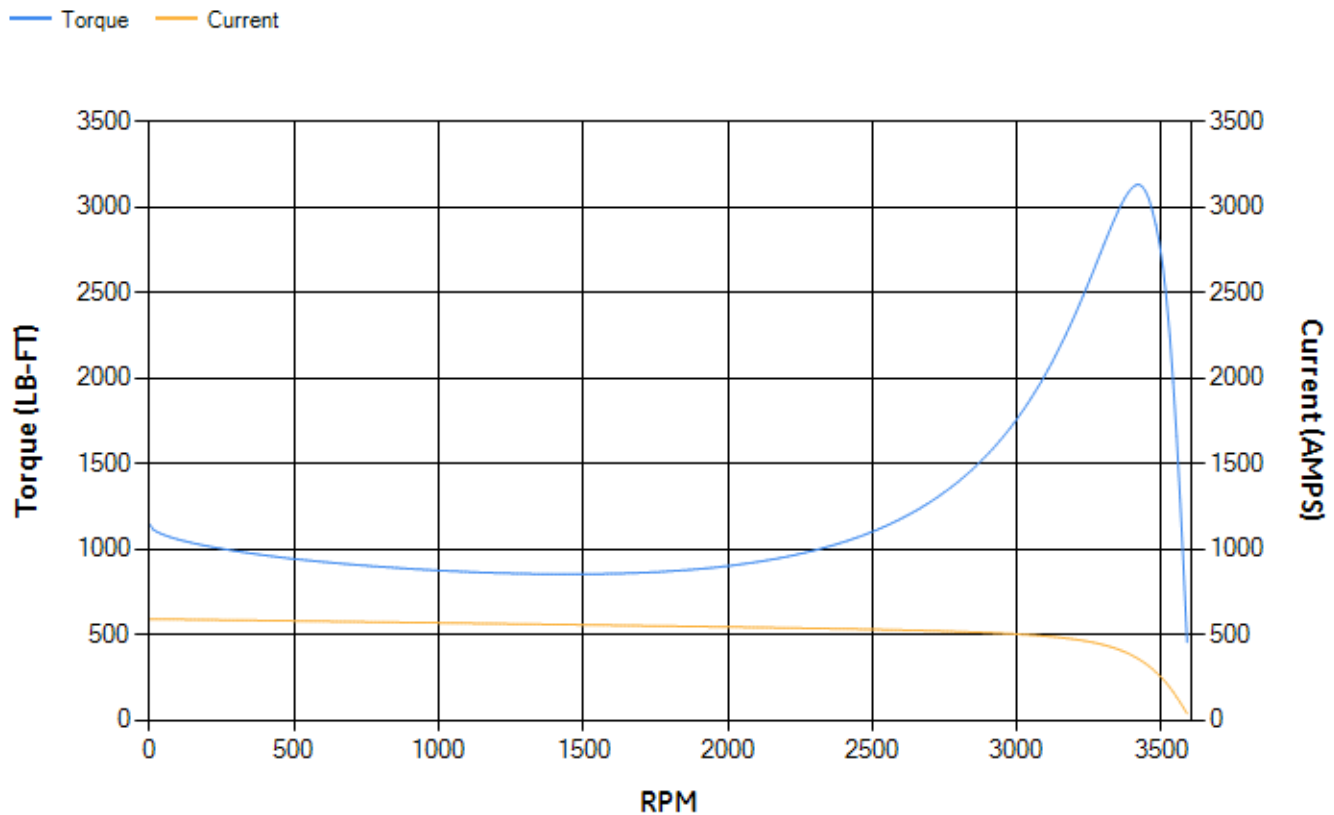
Short Circuit A-C: 0.043

X/R Ratio: 13.773

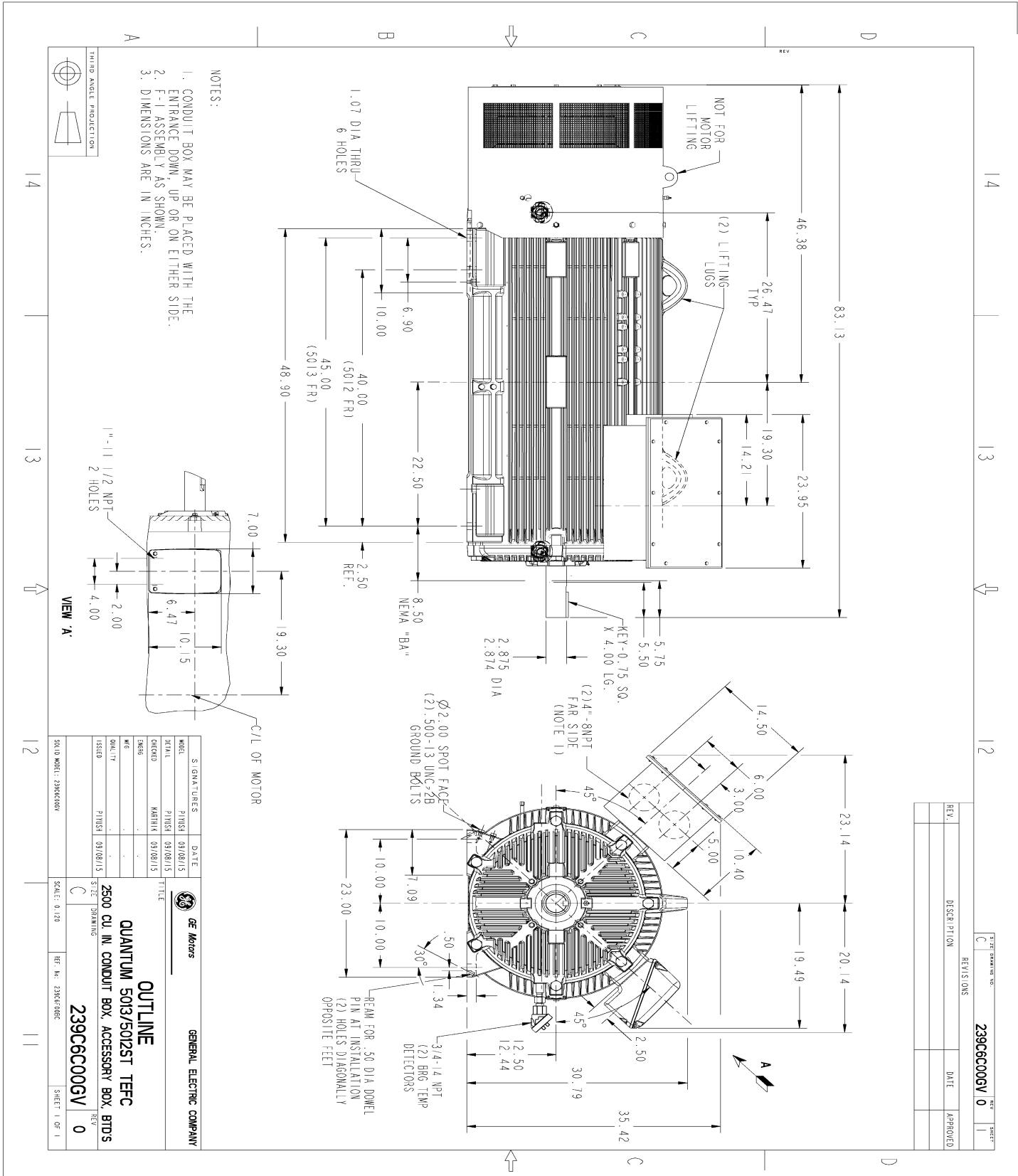
Stator Slots: 48

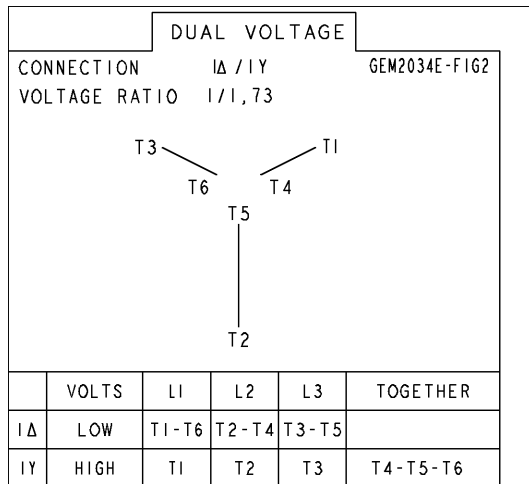
Rotor Slots: 40

Speed Torque Current Curve (First Connection, First Speed)

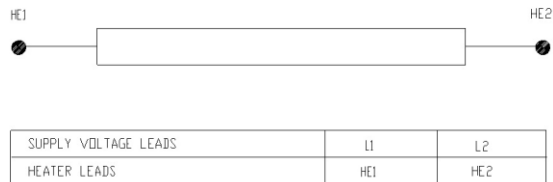


Marks:

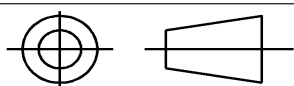


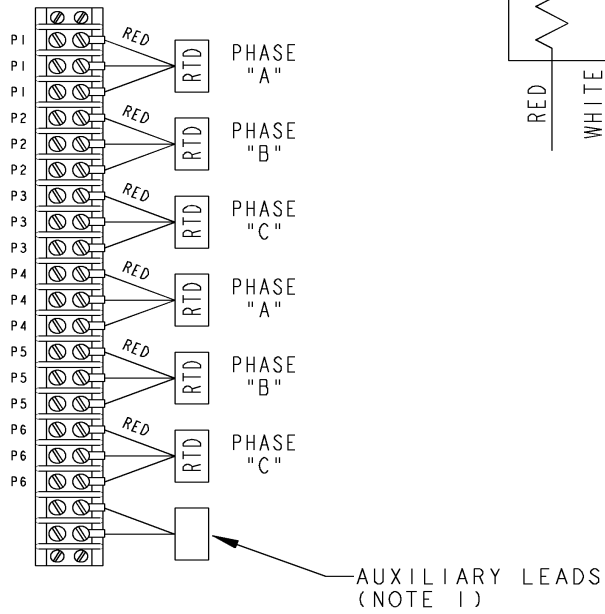
Marks:**Connection Diagram**
GEM2034E-FIG2**Heater Connection**
3027JE-1C

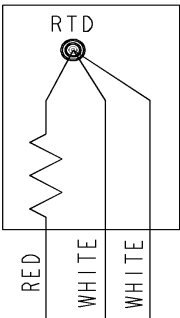
HEATER CONNECTION



GE PROPRIETARY INFORMATION		REVISIONS				
SHEET 2 REV 235A3027XY SIZE A DRAWING NO.	This document is the property of General Electric Company ("GE") and contains proprietary information of GE. This document is loaned on the express condition that neither it nor the information contained herein shall be disclosed to others without the express written consent of GE Industrial Systems, and that the information shall be used by the recipient only as approved expressly by GE Industrial Systems. This document shall be returned to GE upon its request. This document may be subject to certain restrictions under U.S. export control laws and regulations.		REV.	DESCRIPTION	DATE	APPROVED
	THIRD ANGLE PROJECTION		1	ISAAC# 15-0790 HARIKIRAN	07/28/15	DHEERAJ
		2	ISAAC# 16-0422 SAGAR K	05/04/2016	ADINARAYANA	





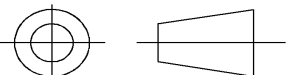


NOTE 1: AUXILIARY LEADS SHOWN MAY OR MAY NOT BE PROVIDED IN MOTOR.
 NOTE 2: SPARE RTDS (P7 & P8) FURNISHED IN CASE OF FAILURE IN OTHER RTDS (P1-P6).
 PHASE LOCATION WILL DEPEND UPON NUMBER OF POLES WINDING CONFIGURATION.

Part must conform to SI 900000 Sect. 4, Toxicity Procedure		GE Motors GENERAL ELECTRIC COMPANY	
FOR ADDITIONAL INFO REFER TO:	SIGNATURES	DATE	TITLE
APPLIED PRACTICES	MODEL		CONNECTION DIAGRAM WINDING RTD & AUXILIARY LEADS
DIMENSIONS ARE IN INCHES	DETAIL	VIVEK 06/26/15	
TOLERANCE ON: 1 PL DECIMALS ± 0.1 2 PL DECIMALS ± 0.02 3 PL DECIMALS ± 0.005 ANGLES ± 0.5 FRACTIONS ±	CHECKED	KARTHIK 06/26/15	
	ENGRG		
	MFG		
QUALITY			SIZE
FINISH	ISSUED	VIVEK 06/26/15	DRAWING
MATERIAL	SOLID MODEL: MODEL NAME		SCALE: N.T.S.
		REF: - 235A4594AX	SHEET 1 of 1



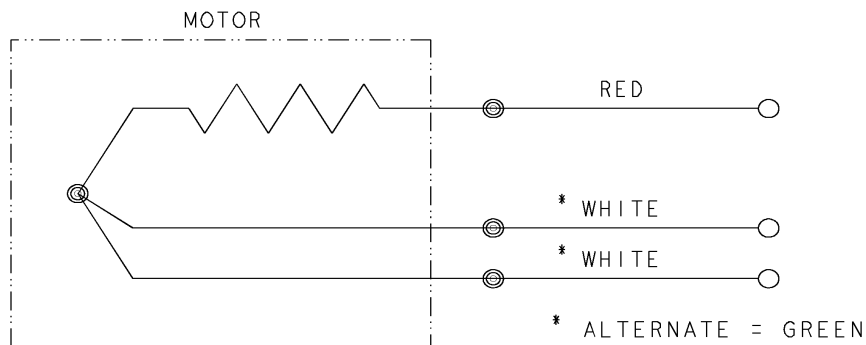



REV	SH	THIRD ANGLE PROJECTION	REVISIONS			
			REV	DESCRIPTION	DATE	APPROVED
1			1	ISAAC #12-1124	HAR1 11/19/12	KARTHIK

CONFIDENTIAL AND PROPRIETARY

This document is the property of General Electric Company and contains proprietary and confidential information of the Motor Business Group (MBG). The document is loaned on the express conditions that neither it nor the information contained therein shall be disclosed to others without the express consent of MBG and that the information shall be used by the recipient only as approved expressly by MBG. Also, the document shall be returned to MBG upon its request.

BEARING RTDS



UNLESS OTHERWISE SPECIFIED		SIGNATURES	DATE	 GE Motors Fort Wayne, Indiana		
DIMENSIONS ARE IN INCHES		DRAWN D.E. BAIR	12/16/92			
TOLERANCES ON:		CHECKED D.E. BAIR	12/16/92	CONNECTION DIAGRAM BEARING RTDS		
2 PL DECIMALS ±		ENGRG K. DESAI	12/16/92			
3 PL DECIMALS ±		ISSUED D.E. BAIR	12/16/92	SIZE A FSCM NO DWG NO 235A3027NA		
ANGLES ±						
FRACTIONS ±				SCALE 1/1 SHEET 1 OF 1		
MATERIAL:						
APPLIED PRACTICES:		CAD NO. F500:235A3027NA		DISTR TO		

