

# Product Information Packet

November 9, 2016

Data shown is for the current revision model #. Ensure your nameplate model # matches.

<b>Model Number:</b>	<b>5KS213STE205RG3</b>
<b>Catalog Number:</b>	<b>M7560</b>
<b>Instruction Manual:</b>	GEI-M1031
<b>Connection Diagram:</b>	GEM2034E-FIG210
<b>Outline Drawing:</b>	358B6271AC

Accessory Connection Diagrams			
<b>Bearing Thermocouple:</b>	None	<b>Heater:</b>	None
<b>RTD:</b>	None	<b>Thermistor:</b>	None
<b>Thermostat:</b>	None	<b>Winding Thermocouple:</b>	None
<b>Bearing RTD:</b>	None		

Table of Contents	
Specification	01
Performance Characteristics	02
Outline Drawing	03
Connection Drawing(s)	04

**Marks:**

<b>MODEL NUMBER:</b>	<b>5KS213STE205RG3</b>	<b>Estimated Weight:</b>	202 Lbs
<b>Outline Drawing:</b>	358B6271AC	<b>Time Rating:</b>	CONT
<b>Connection Diagram:</b>	GEM2034E-FIG210	<b>Enclosure:</b>	TEFC
<b>Instruction Book:</b>	GEI-M1031	<b>Encl Construction:</b>	SD
<b>Design Code:</b>	21AD1014A	<b>Ambient Max(°C):</b>	40
<b>Type:</b>	KS	<b>Alt Ambient Max(°C):</b>	--
<b>Frame:</b>	213T	<b>Insulation Class:</b>	F
<b>Phases:</b>	3	<b>NEMA Design:</b>	A
<b>Poles:</b>	4	<b>Nominal Efficiency:</b>	91.7 %
<b>Output Power:</b>	7.5HP 5.6KW	<b>Guaranteed Efficiency:</b>	90.2
<b>RPM:</b>	1765	<b>3/4 Load Efficiency:</b>	92.3
<b>Voltage:</b>	230/460	<b>KVA Code:</b>	J
<b>Hertz:</b>	60	<b>Max KVAR:</b>	2.3
<b>Amps - FL:</b>	18.2/9.1	<b>Power Factor:</b>	84
<b>Service Factor:</b>	1.15	<b>Bearing - DE:</b>	6308ZZC3
<b>Alt Service Factor:</b>	--	<b>Bearing - ODE:</b>	6208ZZC3

**Enclosure is Totally Enclosed Fan-Cooled**

---

**Stamped Nameplate Notes:**

USABLE AT 200V @ 7.5 HP,20.5 AMPS @ 1.0 SF

LRA: 144.6/72.3

50HZ DATA: 5 HP,200/400V, 16.4/8.2 AMPS @ 1.15 SF

50HZ DATA:7.5 HP,200/400V,20.8/10.4 AMPS @ 1.00 SF

GREASE TYPE: SHELL ALVANIA R3 LITHIUM GREASE

**Additional Information:**

CONDUIT BOX VOLUME (CU IN):66.7

CONDUIT BOX MATERIAL: CAST IRON

INVERTER DUTY PER NEMA MG1 PART 31

FOR VARIABLE TORQUE LOADS

EXT MNT AEGIS SGR

R. KOHNE 2/25/08

**Performance Characteristics**

1st Winding 1st Connection

**Design: 21AD1014A**

**Marks:**

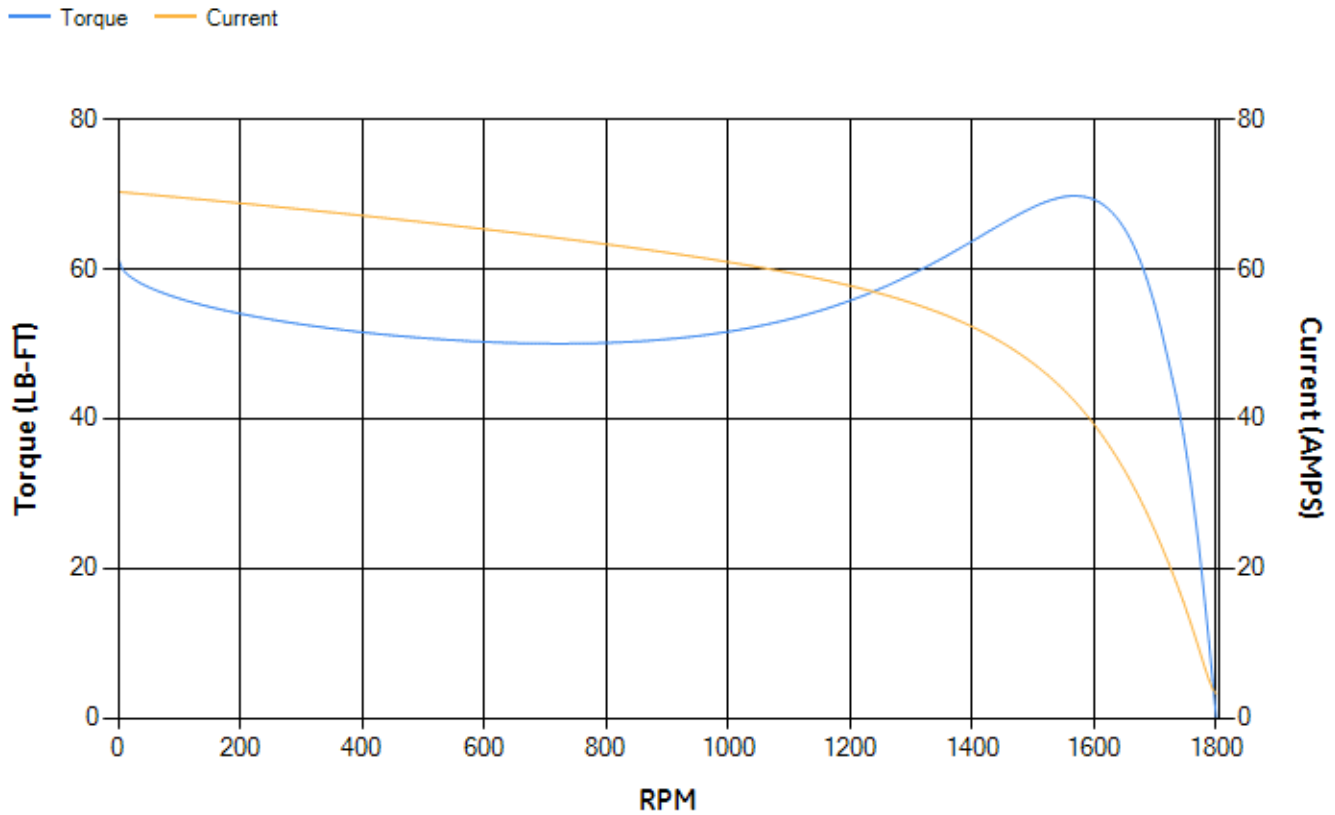
LOAD %	125.0	115.0	100.0	75.0	50.0	25.0	0.0
% EFF	90.57	91.06	91.87	92.27	91.93	88.43	0.00
% PF	85.23	84.87	83.84	80.09	71.26	50.12	5.98
AMPS	11.37	10.45	9.11	7.12	5.36	3.96	3.24

<b>TORQ(FL)#FT</b>	22.32	<b>TORQ(LR)%FL</b>	274.65	<b>TORQ(BD)%FL</b>	309.86
<b>AMPS(LR)</b>	70.31	<b>PF AT START</b>	0.42		

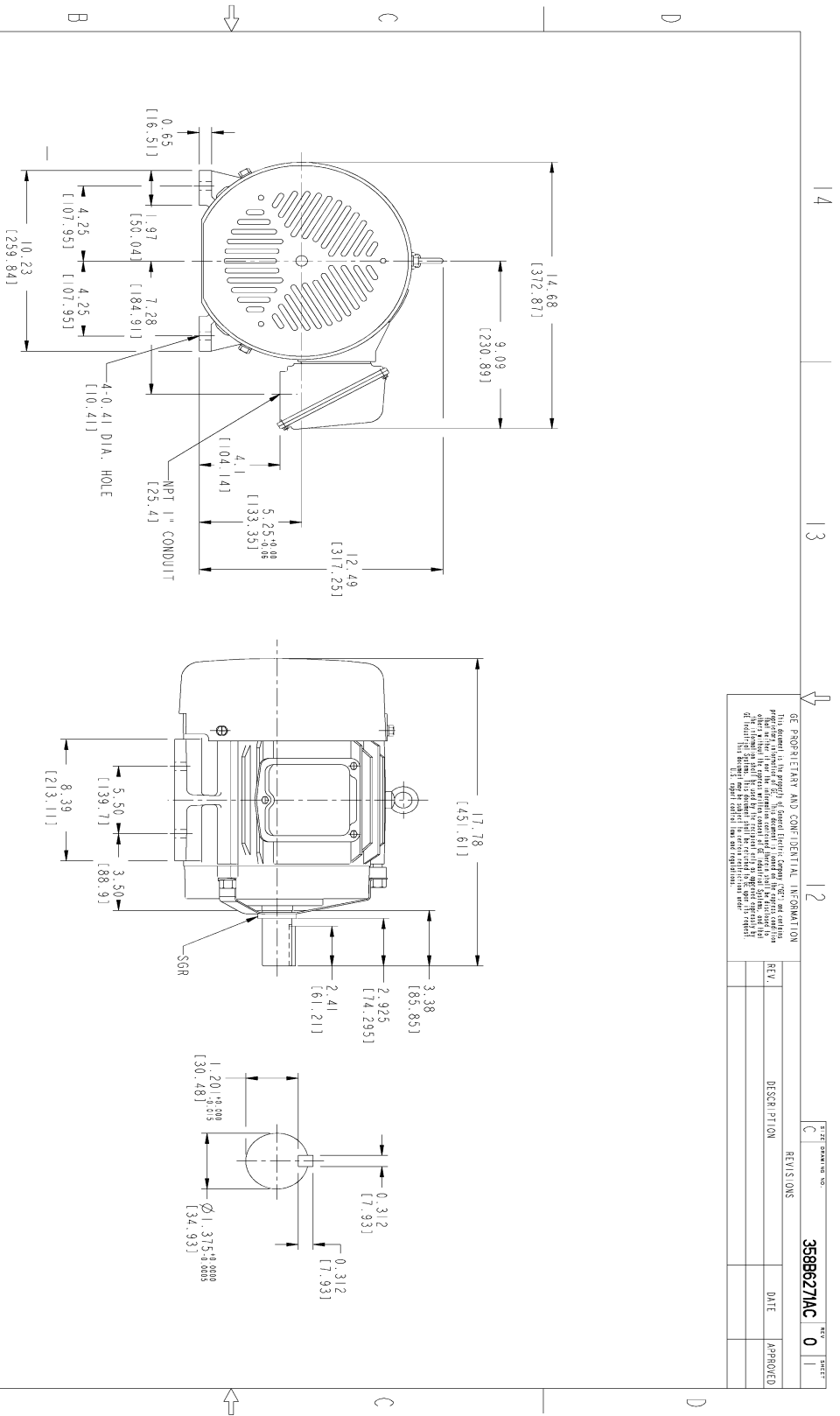
This motor is capable of two cold or one hot start with a maximum connected load inertia of 287 Lb-Ft Sq (12.08 Kg-meter Sq) at 100% voltage, where the load torque varies with the square of the speed. Acceleration time with maximum inertia and the above load type is 35 seconds. Safe stall time at 100% voltage is 91 seconds cold, 57 seconds hot. Rotor inertia is 0.94 Lb-Ft Sq (0.04 Kg-meter Sq).

<b>Open Circuit A-C:</b>	0.371	<b>Short Circuit D-C:</b>	0.011
<b>Short Circuit A-C:</b>	0.015	<b>X/R Ratio:</b>	4.127
<b>Stator Slots:</b>	48	<b>Rotor Slots:</b>	40

**Speed Torque Current Curve (First Connection, First Speed)**



Marks:

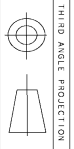


NOTES :

1. DIMENSIONS ARE IN INCHES.
2. F-1 ASM AS SHOWN.
3. F-2 ASM - HAS CONDUIT BOX ON OPPOSITE SIDE.
4. BRACKETED DIMENSIONS ARE METRIC (MILLIMETERS)
5. IC411, IP54, IM34 APPLY

GE PROPRIETARY AND CONFIDENTIAL INFORMATION  
 This document is the property of General Electric Company ("GE") and contains information that is confidential and/or proprietary to GE. It is intended for internal use only. It is not to be distributed, copied, or otherwise used without the express written consent of GE. The information contained herein is not to be used for any other purpose without the express written consent of GE. GE reserves the right to change the information contained herein without notice. GE does not warrant the accuracy or completeness of the information contained herein. GE is not responsible for any errors or omissions in this document. GE is not responsible for any damages, including consequential damages, arising from the use of this document. GE is not responsible for any claims, including patent claims, arising from the use of this document. GE is not responsible for any claims, including patent claims, arising from the use of this document. GE is not responsible for any claims, including patent claims, arising from the use of this document.

REV.	DESCRIPTION	DATE	APPROVED
0			



THIRD ANGLE PROJECTION

**GE Motors** GENERAL ELECTRIC COMPANY

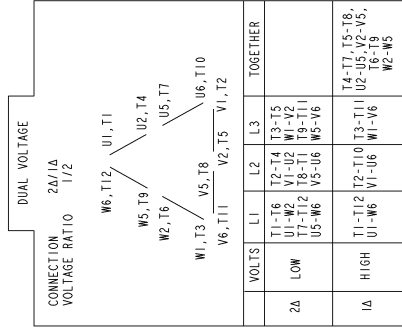
**OUTLINE**  
 FTD - 23ST TERC GE MARK WITH SGR  
 667 CU IN CONDUIT BOX

MODEL	SIGNATURES	DATE
5KS213STE205RG3	SHANKAR	06/24/11
DESIGN	VENKAT J	06/24/11
DATE	VENKAT J	06/24/11
QUALITY	SHANKAR	06/24/11

SCALE: DRAWING SCALE  
 3588627IAC  
 SHEET 1 OF 1

Marks:

**Connection Diagram**  
**GEM2034E-FIG210**



NAME:501452353 OBJECT:GEM2034E-FIG210 DATE:25-Feb-08 14:03:35