

Product Information Packet

November 7, 2016

Data shown is for the current revision model #. Ensure your nameplate model # matches.

Model Number:	5CD193TA027A007
Catalog Number:	D460
Instruction Manual:	GEH-3967N
Connection Diagram:	36A167900CA502
Outline Drawing:	36A167936FA002

Accessory Connection Diagrams			
Bearing Thermocouple:	None	Heater:	None
RTD:	None	Thermistor:	None
Thermostat:	None	Winding Thermocouple:	None
Bearing RTD:	None		

Table of Contents	
Specification	01
Outline Drawing	02
Connection Drawing(s)	03

Marks:

MODEL NUMBER:	5CD193TA027A007	Enclosure Mtg Assem:	36A167777AD001
Outline Drawing:	36A167936FA002	Instruction Book:	GEH-3967N
Connection Diagram:	36A167900CA502	RPM:	1750/2300
Horsepower:	30	Armature Amps:	103
Armature Volts:	240	Type:	CD366AT
Wound:	SHUNT	Power Supply Code:	C
Enclosure:	TEFC	Insulation Class:	F
Duty:	CONT	Ambient Max (°C):	40 C
Rating Code:	193T1330-00	Field Volts:	300/150
K(V):	1.28 Cemf volts/Radian/Sec	WK2:	18.30Lb Ft2
K(T):	.87 Ft/Amp	Year of Manufacture:	2016
Minimum Ambient:	0 C	Max Altitude:	3300 Ft

Resistances at 25 Degrees C :

Shunt Field:	119 OHMS
Armature:	.0333 OHMS
Commutator Field:	.0098 OHMS

Inductances:

Armature Circuit Total:	.880 mH Saturated
Shunt Field:	125.0 Henries Unsaturated

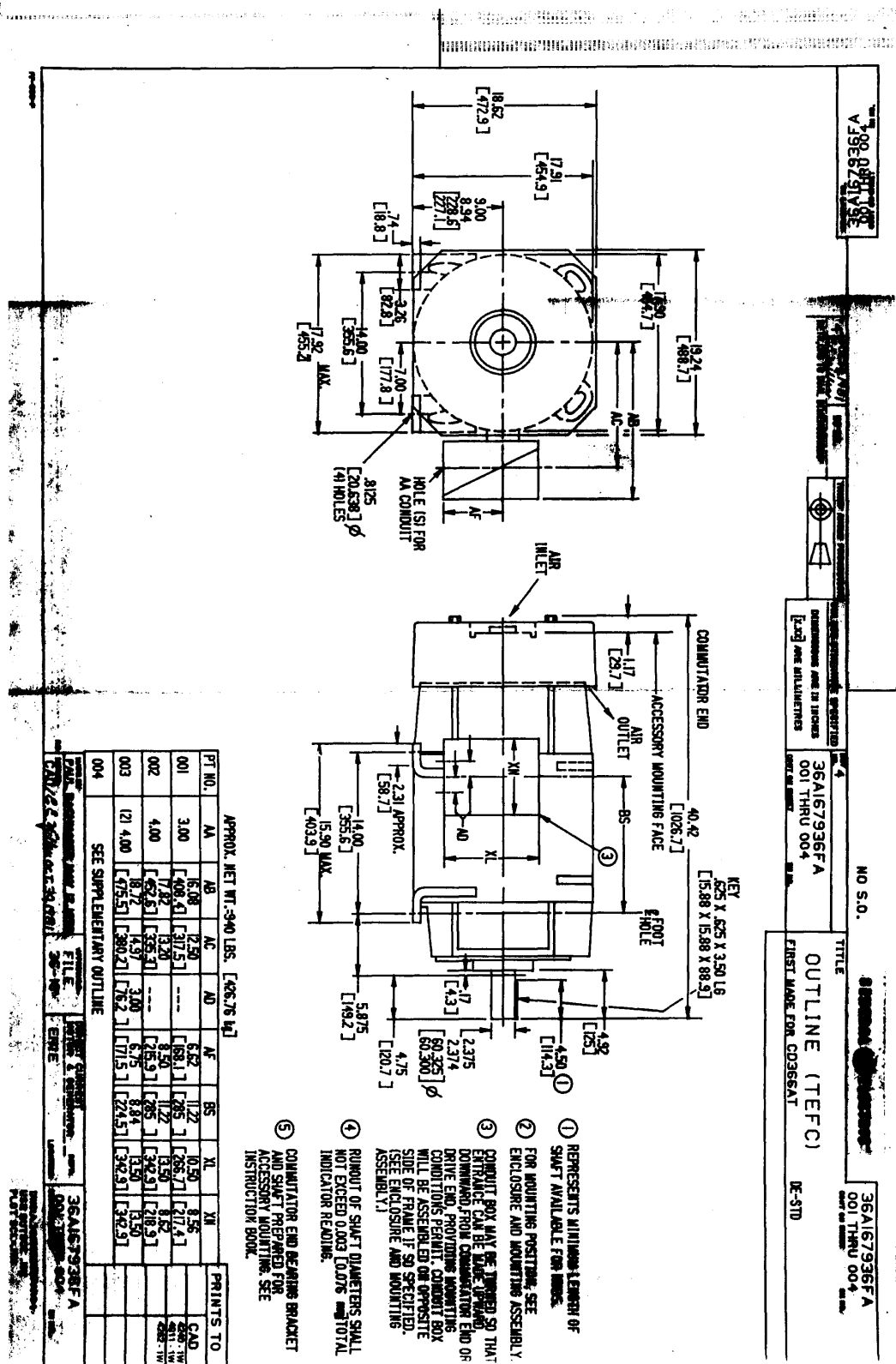
Shunt Field Data:

Shunt Field Current(1): 1.8 AMPS at Rated Load and 1750 RPM
 Shunt Field Current(2): 1.6 AMPS at Rated Load and 1933 RPM
 Shunt Field Current(3): 1.3 AMPS at Rated Load and 2300 RPM

Additional Machine Notes:

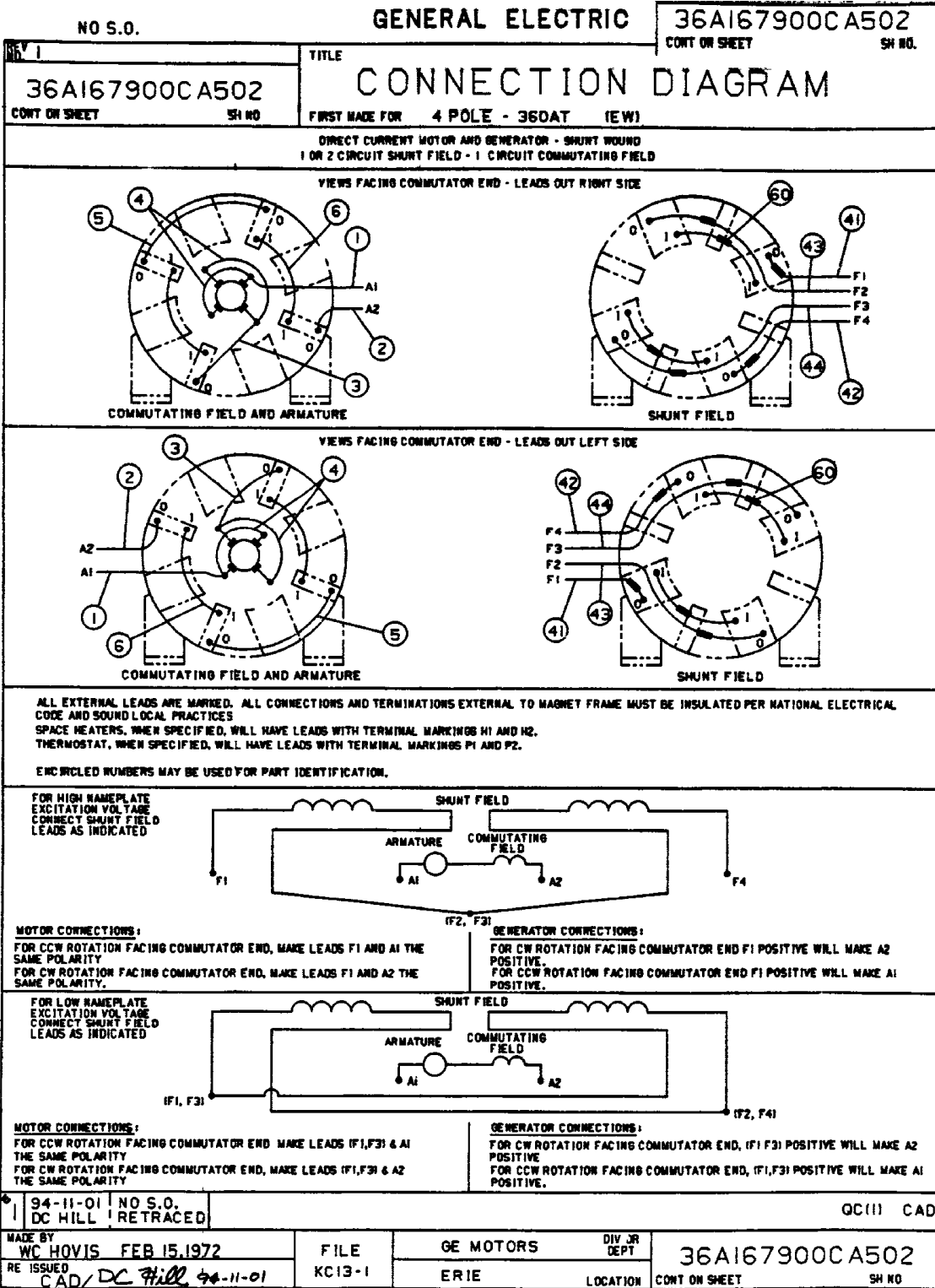
TOTALLY ENCLOSED FAN COOLED - BALL BEARINGS
 CONDUIT BOX ON RIGHT HAND SIDE FACING COMMUTATOR END
 STANDARD SHAFT DRIVE END ONLY - WITH FEET
 WITH:
 CSA STAMP
 THERMOSTAT- NORMALLY CLOSED, AC RATING- 600V MAX-
 .5A, 250V-1.5A, OR 125V-3A- DC RATING- 30V MAX-
 1.5A. MAXIMUM CURRENT BASED ON INDUCTIVE LOADS UP
 TO AND INCLUDING NEMA NO. 5 CONTACTOR.

Marks:



- ① REPRESENTS MINIMUM LENGTH OF SHAFT AVAILABLE FOR MOUNTING.
- ② FOR MOUNTING POSITIONING, SEE ENCLOSURE AND MOUNTING ASSEMBLY.
- ③ CONDUIT BOX MAY BE TURNED SO THAT ENTRANCE CAN BE MADE UPWARD OR DOWNWARD FROM COMMUTATOR END OR DRIVE END. PROVIDING MOUNTING CONDITIONS PERMITTED. CONDUIT BOX WILL BE ASSEMBLED ON OPPOSITE SIDE OF FRAME IF SO SPECIFIED. (SEE ENCLOSURE AND MOUNTING ASSEMBLY.)
- ④ RUNOUT OF SHAFT DIAMETERS SHALL NOT EXCEED 0.003 (0.0075 mm) TOTAL INDICATOR READING.
- ⑤ COMMUTATOR END BEARING BRACKET AND SHAFT PREPARED FOR ACCESSORY MOUNTING. SEE INSTRUCTION BOOK.

Marks:



C5X A 36A167900CA502R01