

Product Information Packet

January 13, 2017

Data shown is for the current revision model #. Ensure your nameplate model # matches.

Model Number:	5KS213SAE6031A
Catalog Number:	V901
Instruction Manual:	GEK-95351
Connection Diagram:	GEM2034E-FIG9
Outline Drawing:	4002B5821PMP5323

Accessory Connection Diagrams

Bearing Thermocouple:	None	Heater:	3027JE-1
RTD:	None	Thermistor:	None
Thermostat:	None	Winding Thermocouple:	None
Bearing RTD:	None		

Table of Contents

Specification	01
Performance Characteristics	02
Outline Drawing	03
Connection Drawing(s)	04



imagination at work

Marks:

MODEL NUMBER:	5KS213SAE6031A	Estimated Weight:	200 Lbs
Outline Drawing:	4002B5821PMP5323	Time Rating:	CONT
Connection Diagram:	GEM2034E-FIG9	Enclosure:	TEFC
Instruction Book:	GEK-95351	Encl Construction:	SD
Design Code:	21BD1152A	Ambient Max(°C):	40
Type:	KS	Alt Ambient Max(°C):	65
Frame:	L213TP10	Insulation Class:	H
Phases:	3	NEMA Design:	B
Poles:	4	Nominal Efficiency:	91.7 %
Output Power:	7.5HP 5.6KW	Guaranteed Efficiency:	90.2
RPM:	1770	3/4 Load Efficiency:	92.2
Voltage:	230/460	KVA Code:	H
Hertz:	60	Max KVAR:	2.3
Amps - FL:	18.4/9.2	Power Factor:	83.5
Service Factor:	1.15	Bearing - DE:	7308
Alt Service Factor:	1.00	Bearing - ODE:	6208-2ZC3

Enclosure is Totally Enclosed Fan-Cooled

Stamped Nameplate Notes:

PREMIUM EFFICIENT MOTOR
 ROT CCW FACING ODE LEAD/PH SEQUENCE 1-2-3/1-2-3
 HTR LDS H 115V 60W
 SEVERE DUTY
 INVERTER DUTY PER NEMA MG1 PART 31
 ALTERNATE RATING FOR PWM CONTROL:
 1.0 SF VAR TORQUE RANGE 20-60 HZ
 50HZ DATA:5 HP 190/380 V WITH FLA-15.2/7.6 A

Additional Information:

4P - TP EXTN
 C/BOX 55 CU IN-1.00 NPT
 HEATER LEADS EXIT WITH MOTOR LEADS
 E/SHLD GROUND STUD MTD ON DE C/BOX SIDE
 RCF 5000 CPM, STATIC DEFLECTION .0014 INCHES &
 CENTER OF GRAVITY 8.59 INCHES
 HOLLOW SHAFT HIGH THRUST
 LEADS NUMBERED 1,2,3 - CCW ROTN FROM ODE
 OIL RESISTANT SLEEVING ON LEADS
 BEARING LIFE 8760 HOURS AT 2071 LB THRUST
 COUPLING NOT INCLUDED IN BOM, WILL BE
 ORDERED SEPERATELY



Performance Characteristics

1st Winding 1st Connection

Design: 21BD1152A**Marks:**

LOAD %	125.0	115.0	100.0	75.0	50.0	25.0	0.0
% EFF	90.56	91.05	91.84	92.16	91.69	87.87	0.00
% PF	84.61	84.44	83.67	80.32	71.89	50.99	6.51
AMPS	11.45	10.5	9.14	7.11	5.33	3.92	3.21

TORQ(FL)#FT 22.25
AMPS(LR) 61.27

TORQ(LR)%FL 192.51
PF AT START 0.4

TORQ(BD)%FL 282.9

This motor is capable of two cold or one hot start with a maximum connected load inertia of 306 Lb-Ft Sq (12.88 Kg-meter Sq) at 100% voltage, where the load torque varies with the square of the speed. Acceleration time with maximum inertia and the above load type is 54 seconds. Safe stall time at 100% voltage is 120 seconds cold, 89 seconds hot. Rotor inertia is 1 Lb-Ft Sq (0.04 Kg-meter Sq).

Open Circuit A-C: 0.449

Short Circuit D-C: 0.013

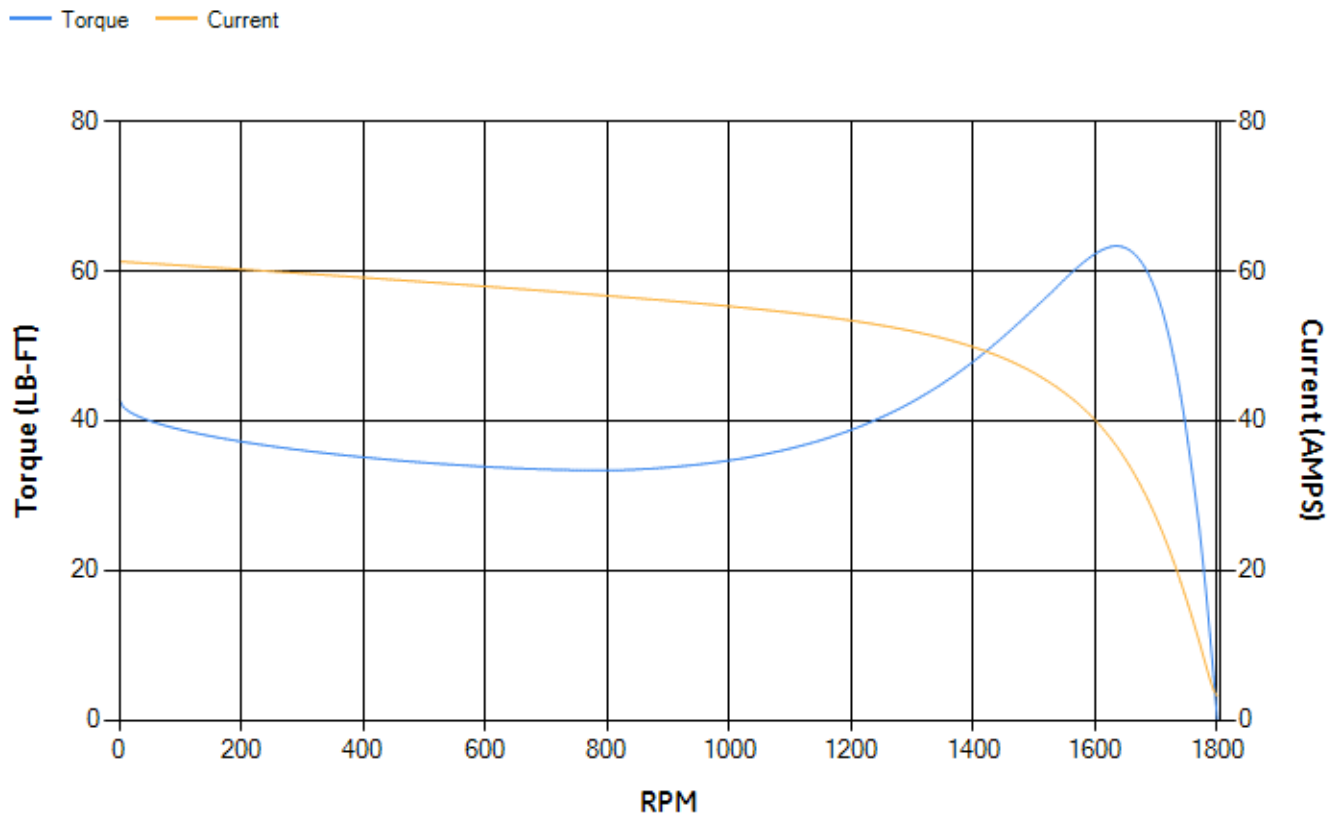
Short Circuit A-C: 0.021

X/R Ratio: 4.935

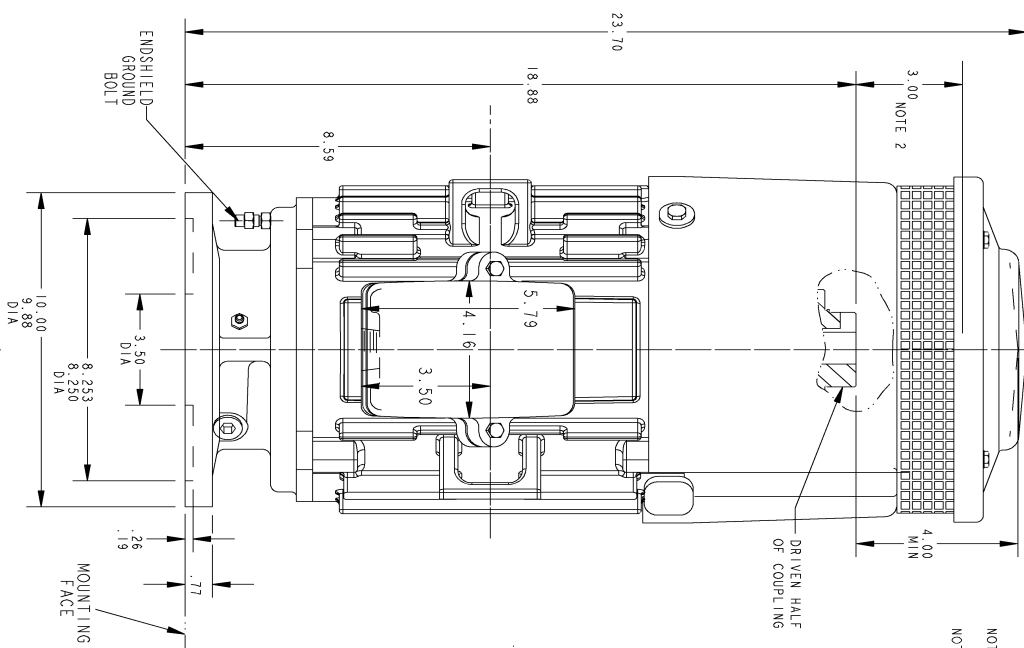
Stator Slots: 36

Rotor Slots: 28

Speed Torque Current Curve (First Connection, First Speed)



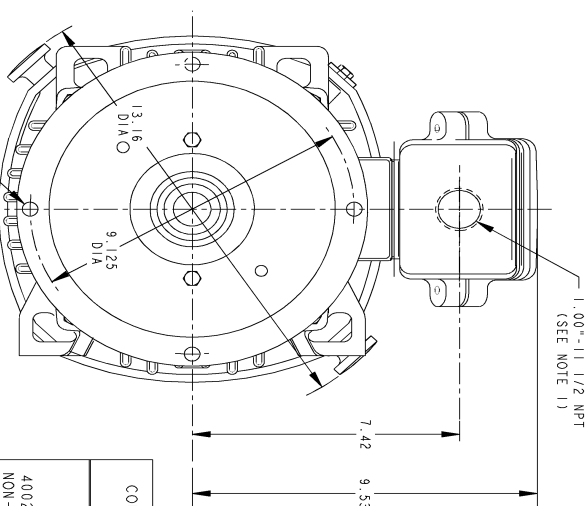
Marks:



NOTE 1: CONDUIT BOX MAY BE ASSEMBLED WITH ENTRANCE UP, DOWN OR TO EITHER SIDE.

ENTRANCE UP, DOWN OR TO EITHER SIDE.

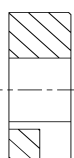
NOTE 2: THE TOTAL HEIGHT OF PUMP SHAFT & LOCKING NUT ABOVE TOP OF COUPLING MUST NOT EXCEED THIS DIMENSION



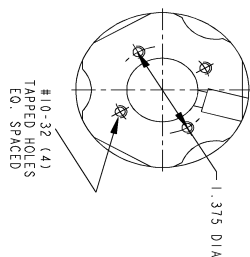
1.00" - 1 1/2 NPT
(SEE NOTE 1)

VIEW AT ARROW "A"

COUPLING KIT	POLES		BONE DIA. "BX"	KEYWAY	
	4	2		"W"	"D"
4002B5521AC NON-REVERSE	1	6	1.002 1.001	.250	.125
	2	7	.938 .936		
	3	8	.877 .876		
	4	9	.752 .751		
4002B5521AD BOLTED ON SELF-RELEASE	1	6	1.002 1.001	.250	.125
	2	7	.938 .936		
	3	8	.877 .876		
	4	9	.752 .751		

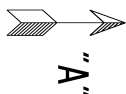


DRIVEN HALF OF COUPLING




REV.	DESCRIPTION	DATE	APPROVED
I	ISSAC #14-0928 PLYUSH	11/14/14	VJAY

THIRD ANGLE PROJECTION



S I G N A T U R E S		D A T E	
MODEL	MARCHI	11/13/13	
DETAIL	MARCHI	11/13/13	
CHECKED	RAJOO	11/13/13	
ENAG	MARCHI	11/13/13	
QUALITY			
ISSUED	MARCHI	11/13/13	
S O L I D M O D E L : M O D E L N A M E			



GE Motors

GENERAL ELECTRIC COMPANY

INDUCTION MOTOR OUTLINE

HOLLOW SHAFT-HIGH THRUST (BD-10), EXT ON DE SIDE

FME: FR20 TFC: "P" BASE VERTICAL

SIZE DRAWING

4002B5821PMP5323

REV

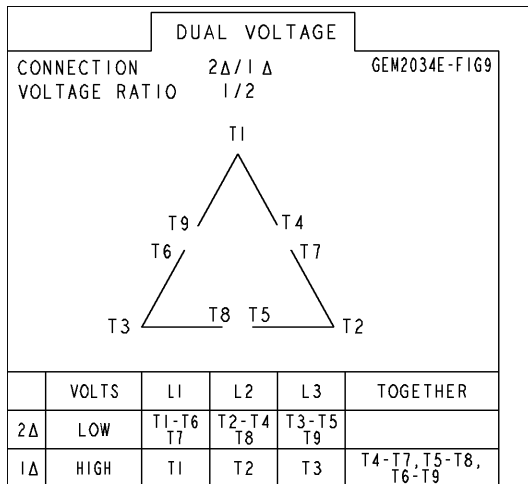
1

SCALE: DRAWING SCALE

SHEET 1 OF 1

Marks:

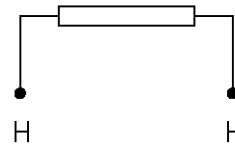
Connection Diagram GEM2034E-FIG9



Heater Connection

3027JE-1

FIG. 1
HEATER CONN.



CONTROL	L1	L2
VOLTAGE ONLY	H	H

