

Product Information Packet

May 26, 2017

Data shown is for the current revision model #. Ensure your nameplate model # matches.

Model Number:	5KAF326SAA222C
Catalog Number:	M9311
Instruction Manual:	GEI-56128
Connection Diagram:	GEM2034E-FIG9
Outline Drawing:	239C5000AA

Accessory Connection Diagrams			
Bearing Thermocouple:	None	Heater:	None
RTD:	None	Thermistor:	None
Thermostat:	3027JE-2A	Winding Thermocouple:	None
Bearing RTD:	None		

Table of Contents

Specification	01
Performance Characteristics	02
Outline Drawing	03
Connection Drawing(s)	04
Spare parts	05



Marks:

MODEL NUMBER:	5KAF326SAA222C		
Outline Drawing:	239C5000AA	Service Factor:	1.00
Connection Diagram:	GEM2034E-FIG9	Alt Service Factor:	--
Instruction Book:	GEI-56128	ASD Type:	PWM
Design Code:	32BD1069A	Time Rating:	CONT
Type:	KAF	Enclosure:	TEFC
Frame:	326T	Encl Construction:	A\$D
Phases:	3	Ambient Max (°C):	40
Poles:	4	Alt Ambient Max(°C):	--
Output Power:	50HP 37KW	Insulation Class:	H
Output Power (2):	50HP 37KW	NEMA Design:	-
Output Power (3):	0HP 0KW	Nominal Efficiency:	94.5 %
RPM:	-	Guaranteed Efficiency:	--
RPM (2):	1780	3/4 Load Efficiency:	--
RPM (3):	1	KVA Code:	H
Voltage:	-	Max KVAR:	18.3
Voltage (2):	230/460	Power Factor:	82.0
Voltage (3):	5.5/11	Service Factor SINE:	1
Hertz:	-	Service Factor ASD:	1
Hertz – 2:	60	Min Supply Wires:	75 C
Hertz – 3:	0.6	IP:	55
Amps – FL:	-	Vibration Limit:	0.04 mm/s
Amps – FL- 2:	120.8/60.4	Bearing Lubrication:	MOBIL POLYREX EM
Amps - FL- 3:	120.8/60.4	Bearing - DE:	6312ZC3
Speed Range RPM:	1-1780	Bearing - ODE:	6312ZC3
Const HP RPM:	1780--	Estimated Weight:	720 Lbs

Enclosure is Totally Enclosed Fan-Cooled

Stamped Nameplate Notes:

ALTERNATE RATING FOR PWM CONTROL: 1.0SF 40C AMB

INVERTER DUTY CONSTANT TORQUE RANGE: 0-60HZ

THERMOSTAT LEADS TB1-TB2 TRIP

IP 55

CLASS H INS WITH CLASS F RISE AT 1.00 SF,

PWM OPERATION

INVERTER DUTY

Additional Information:

4P - T EXTN

346 CU IN - 3.00" NPT

E/S GROUND BOLT MTD ON DE C/BOX SIDE NEAR FOOT

OIL RESISTANT SLEEVING ON LEADS

TACH PROVISION MOTOR

N.C. TRIP TSTAT LDS TO MAIN CONDUIT BOX

F1 MOUNTING

PAINTED ODE ACCESSORY RABBET



SHAFT GROUNDING RING MOUNTED ON DE BRG CAP
WHEN TACH / ENCODER IS USED, ITS MANDATED TO BE
USED IN CONTROL CIRCUITS PER CLASS 2 CIRCUITS OF
CANADIAN ELECTRIC COMMISSION RULE 16-222(1)(A)

Performance Characteristics

1st Winding 1st Connection

Design: 32BD1069A

Marks:

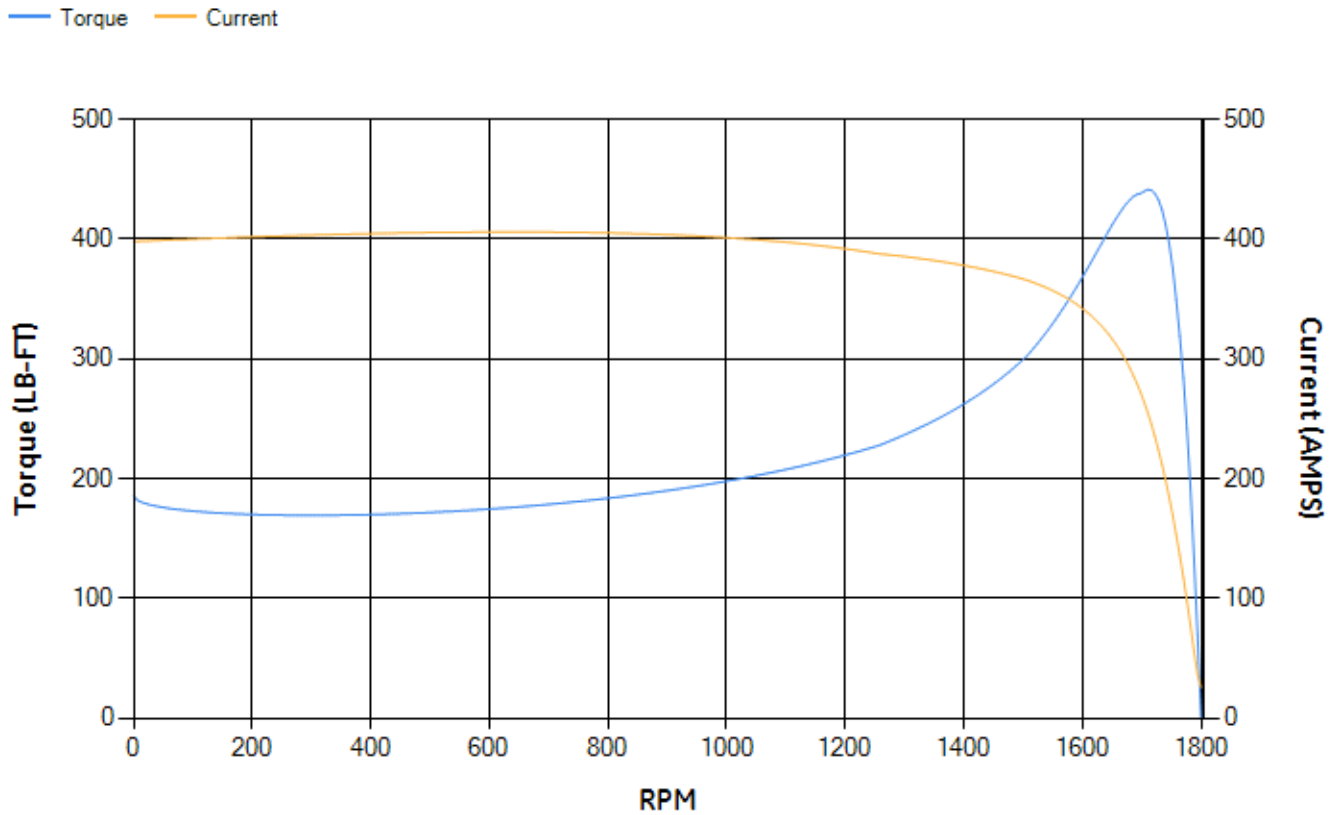
LOAD %	125.0	115.0	100.0	75.0	50.0	25.0	0.0
% EFF	94.4	94.6	95.04	94.99	94.47	91.59	0.00
% PF	84.24	83.52	81.88	76.81	66.11	43.52	3.48
AMPS	73.56	68.11	60.02	48.1	37.46	29.35	25.5

TORQ(FL)#FT	147.33	TORQ(LR)%FL	126.15	TORQ(BD)%FL	296.86
AMPS(LR)	398.02	PF AT START	0.21		

This motor is capable of two cold or one hot start with a maximum connected load inertia of 2140 Lb-Ft Sq (90.09 Kg-meter Sq)at 100% voltage, where the load torque varies with the square of the speed. Acceleration time with maximum inertia and the above load type is 72 seconds. Safe stall time at 100% voltage is 163 seconds cold, 93 seconds hot. Rotor inertia is 9.24 Lb-Ft Sq (0.39 Kg-meter Sq).

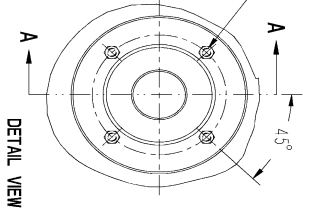
Open Circuit A-C:	0.576	Short Circuit D-C:	0.022
Short Circuit A-C:	0.031	X/R Ratio:	8.28
Stator Slots:	48	Rotor Slots:	38

Speed Torque Current Curve (First Connection, First Speed)



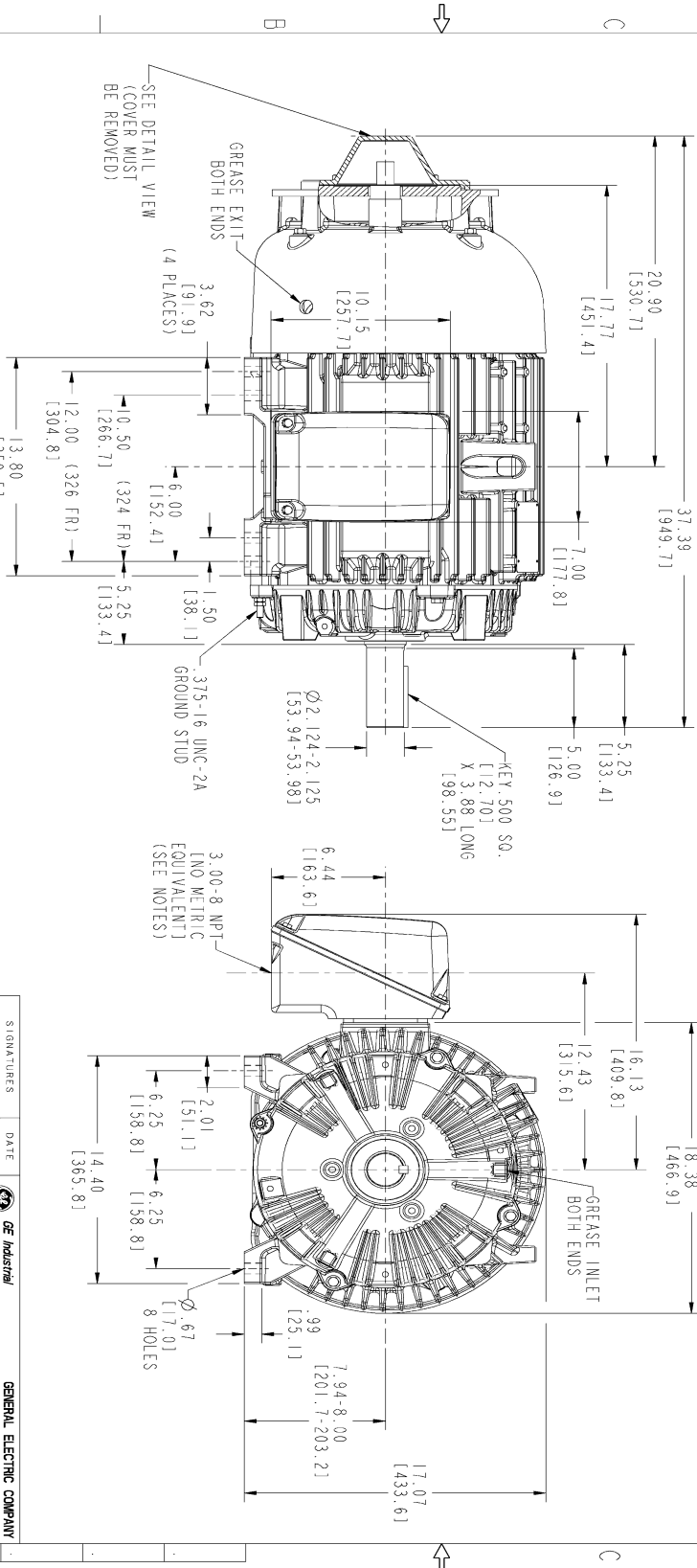
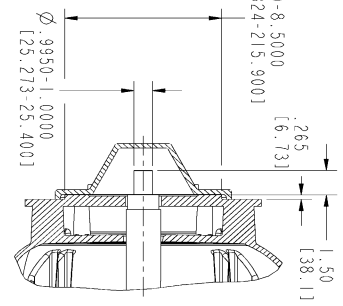
Marks:

C'S SINK Ø.500-1.3 UNC-2B
 Ø.500-.530
 X 80°-120°-88
 MIN FULL THREAD
 (4) HOLES EQ. SP.
 ON A Ø7.250 B.C.



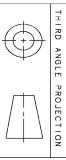
DETAIL VIEW

SECTION A-A



NOTES :

1. CONDUIT BOX MAY BE PLACED WITH THE ENTRANCE DOWN, UP OR ON EITHER SIDE.
2. F-1 ASM AS SHOWN.
3. F-2 ASM HAS CONDUIT BOX ON OPPOSITE SIDE.
4. BRACKETED DIMENSIONS ARE METRIC (MILLIMETERS).



REV.	DESCRIPTION	DATE	APPROVED
1	ISMIC # 14-0927	11/14/14	VILAY
2	ISMIC # 15-0469	05/15/15	ADINARAYAN

GE Industrial Systems

GENERAL ELECTRIC COMPANY
 Fort Wayne, Indiana

OUTLINE

324/326 T TERC ASD

346 CU IN CONDUIT BOX, PROV. FOR TACH

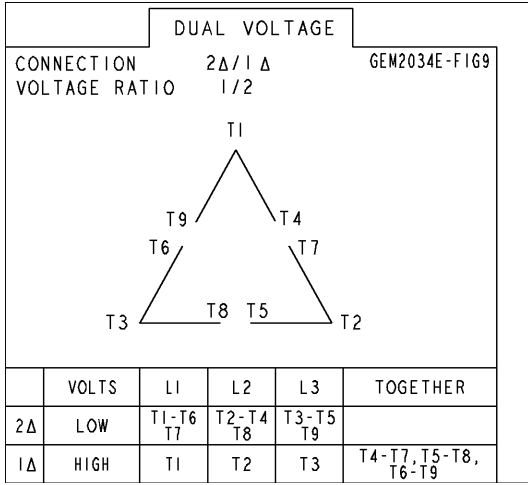
SIZE DRAWING: **239C5000AA**

SCALE: 0.220 REF. NO. SHEET 1 OF 2

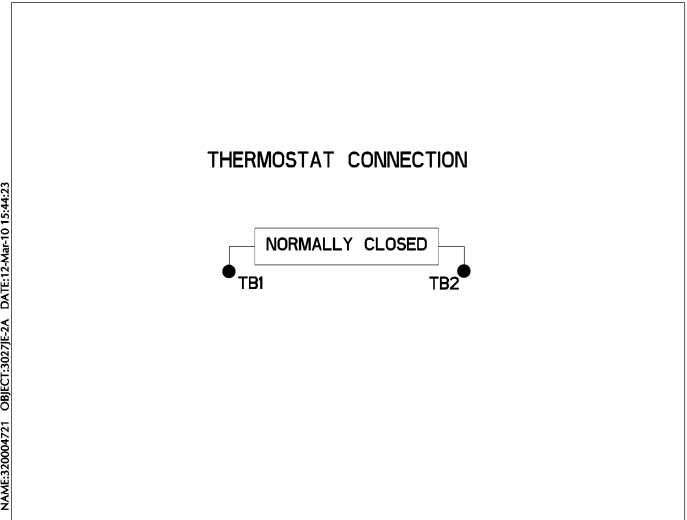
DISTRIBUTION: MMP

Marks:

Connection Diagram
GEM2034E-FIG9



Thermostat Connection
3027JE-2A



End shield Assembly		
Part Description	DE Side Part#	ODE Side Part#
End Shield	115E4200AA1	179B8801AA-G03
Bearing	235A2609AA01	235A2609AA01
Slinger/Inproseal	149C4399G04	149C4399G04

Fan & Fan Cover Assembly	
Part Description	Part#
Fan	159C6900G04
Fan Cover	

Conduit & Accessories Box Assembly	
Part Description	Part#
Conduit Box	149C4429AA2

Mechanical Accessories	
Part Description	Part#
Brake	
Tachometer	