

Product Information Packet

November 7, 2016

Data shown is for the current revision model #. Ensure your nameplate model # matches.

Model Number:	5KS365ATE115A
Catalog Number:	E759
Instruction Manual:	GEI-M1023
Connection Diagram:	GEM2034E-FIG10
Outline Drawing:	358B6202AA

Accessory Connection Diagrams			
Bearing Thermocouple:	None	Heater:	None
RTD:	None	Thermistor:	None
Thermostat:	None	Winding Thermocouple:	None
Bearing RTD:	None		

Table of Contents	
Specification	01
Performance Characteristics	02
Outline Drawing	03
Connection Drawing(s)	04

Marks:

MODEL NUMBER:	5KS365ATE115A	Estimated Weight:	800 Lbs
Outline Drawing:	358B6202AA	Time Rating:	CONT
Connection Diagram:	GEM2034E-FIG10	Enclosure:	DP
Instruction Book:	GEI-M1023	Encl Construction:	OPEN
Design Code:	36AD0005A	Ambient Max(°C):	40
Type:	KS	Alt Ambient Max(°C):	--
Frame:	365TS	Insulation Class:	F
Phases:	3	NEMA Design:	A
Poles:	2	Nominal Efficiency:	93.6 %
Output Power:	100HP 74KW	Guaranteed Efficiency:	92.4
RPM:	3570	3/4 Load Efficiency:	95.0
Voltage:	230/460	KVA Code:	H
Hertz:	60	Max KVAR:	16.9
Amps - FL:	232/116	Power Factor:	86
Service Factor:	1.15	Bearing - DE:	6313C3
Alt Service Factor:	--	Bearing - ODE:	6313C3

Enclosure is Dripproof

Stamped Nameplate Notes:**Additional Information:**

2 POLE DP
 LRA: 1717.6/858.8
 NO. OF MOTOR LEADS: 12
 CONDUIT BOX VOLUME (IN³): 550
 CONDUIT BOX MTL: STAMPED STEEL
 GREASE TYPE: CHEVRON SRI-2 POLYUREA GREASE
 USABLE AT 200V @100 HP, 257 AMPS
 50 HZ DATA: 100HP, 200/400V, 270/135 AMPS AT 1.0SF, 2965 RPM
 SOUND POWER: 90.8
 DMK, 06/04, UPDATED 12/2004
 INVERTER DUTY PER NEMA MG1 PART 31
 FOR VARIABLE TORQUE LOADS

Performance Characteristics

1st Winding 1st Connection

Design: 36AD0005A

Marks:

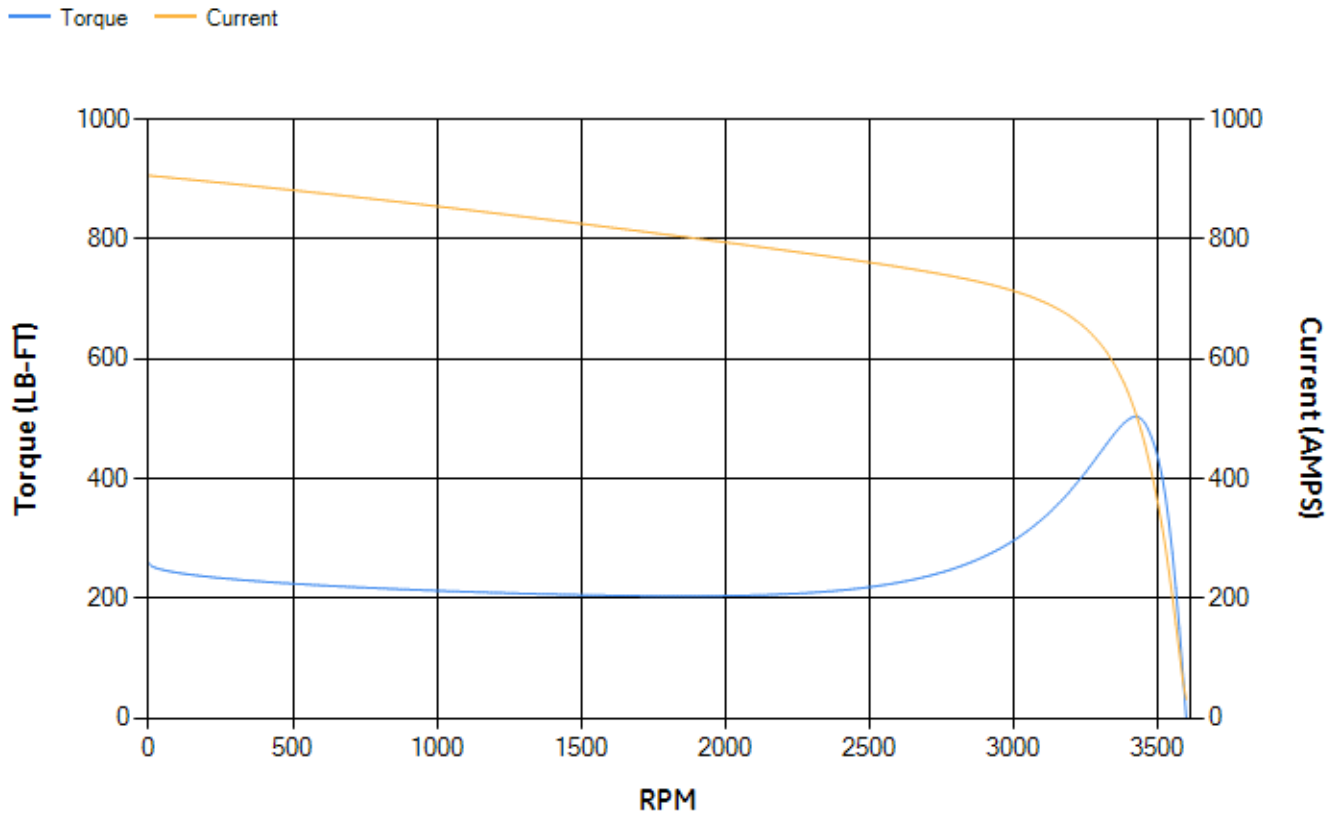
LOAD %	125.0	115.0	100.0	75.0	50.0	25.0	0.0
% EFF	94.74	94.89	95.24	95.02	94.3	91.04	0.00
% PF	90.56	90.36	89.73	87.28	80.8	61.59	6.62
AMPS	136.35	125.54	109.52	84.64	61.42	41.73	31.21

TORQ(FL)#FT	147.01	TORQ(LR)%FL	175.97	TORQ(BD)%FL	342.22
AMPS(LR)	906.14	PF AT START	0.24		

This motor is capable of two cold or one hot start with a maximum connected load inertia of 388 Lb-Ft Sq (16.33 Kg-meter Sq)at 100% voltage, where the load torque varies with the square of the speed. Acceleration time with maximum inertia and the above load type is 23 seconds. Safe stall time at 100% voltage is 40 seconds cold, 31 seconds hot. Rotor inertia is 9.33 Lb-Ft Sq (0.39 Kg-meter Sq).

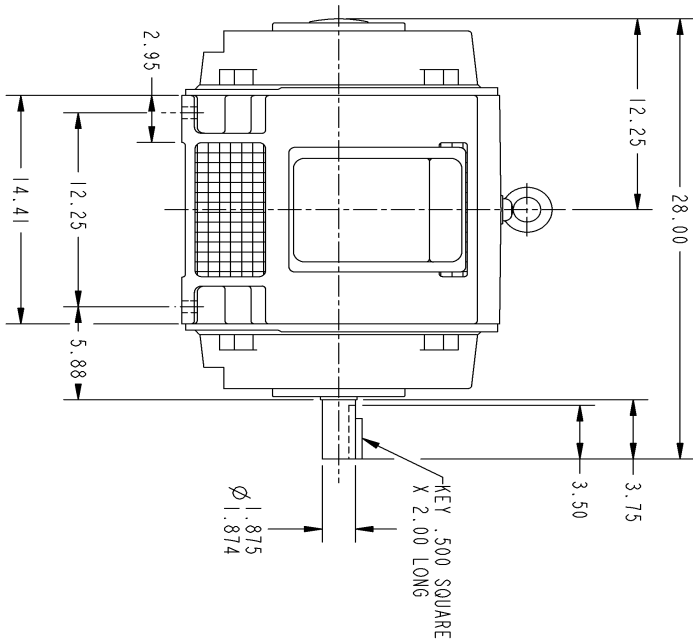
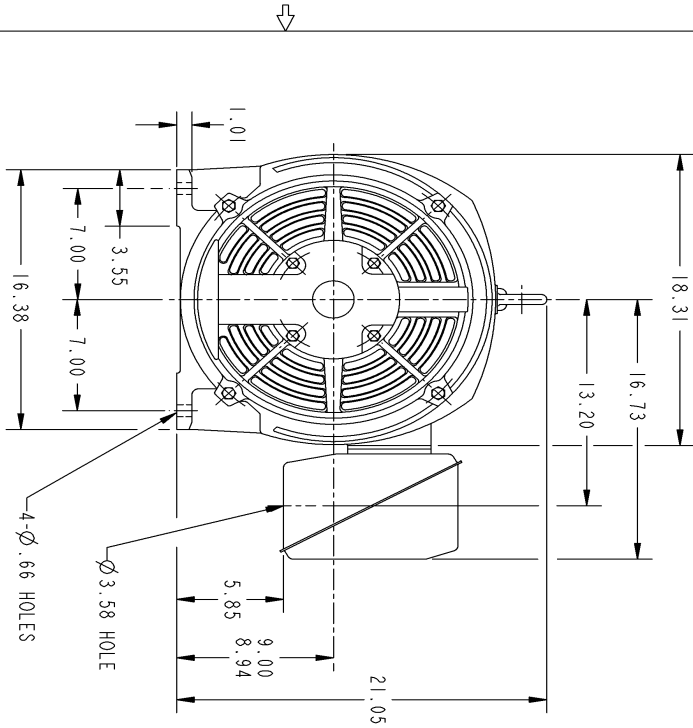
Open Circuit A-C:	1.147	Short Circuit D-C:	0.025
Short Circuit A-C:	0.041	X/R Ratio:	9.562
Stator Slots:	48	Rotor Slots:	40

Speed Torque Current Curve (First Connection, First Speed)



NAME:501053131 OBJECT:358B6202AA DATE:02-May-07 09:03:29

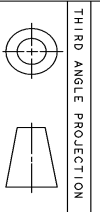
Marks:



GE PROPRIETARY AND CONFIDENTIAL INFORMATION

This document is the property of General Electric Company (GE) and contains proprietary information of GE. This document is loaned on the express condition that neither it nor the information contained therein shall be disclosed to any other person or organization without the prior written approval of GE. This document shall be returned to GE upon its request. This document is not to be copied, reproduced, or distributed without the express written consent of GE.

REV.	DESCRIPTION	DATE	APPROVED
1	ISAAC 07-0770	04/27/07	RHONDA



THIRD ANGLE PROJECTION

NOTES :

1. CONDUIT BOX MAY BE PLACED WITH THE ENTRANCE DOWN, UP OR ON EITHER SIDE.
2. F-1 ASM AS SHOWN.
3. F-2 ASM - HAS CONDUIT BOX ON OPPOSITE SIDE.

APPLIED DIMENSIONS ARE IN INCHES	FOR ADDITIONAL INFO REFER TO:	SIGNATURES	DATE
TOLERANCE ON: 1 PL DECIMALS ± . 2 PL DECIMALS ± . 3 PL DECIMALS ± . ANGLES ± . FRACTIONS ± . FINISH	MODEL RETAIL		
	AMND 12/12/02		
	GEORGE SODHAKAR 12/12/02		
	ENRG GANNON RAY 12/12/02		
	WRS		
	QUALITY		
	ISSUED		
	SODHAKAR 12/13/02		
MATERIAL	SOLID MODEL MODEL NAME		
	B		
	SCALE: DRAWING SCALE		
	SHEET 1 of 1		

GE Industrial Systems
GENERAL ELECTRIC COMPANY

OUTLINE

365TS - CAST IRON ODP FOOTED

358B6202AA REV 1

Marks:

Connection Diagram
GEM2034E-FIG10

