

Product Information Packet

November 9, 2016

Data shown is for the current revision model #. Ensure your nameplate model # matches.

Model Number:	5KS447SAA201D5
Catalog Number:	M9991
Instruction Manual:	GEI-56128
Connection Diagram:	GEM2034E-FIG7
Outline Drawing:	239C6800AA

Accessory Connection Diagrams			
Bearing Thermocouple:	None	Heater:	None
RTD:	None	Thermistor:	None
Thermostat:	None	Winding Thermocouple:	None
Bearing RTD:	None		

Table of Contents

Specification	01
Performance Characteristics	02
Outline Drawing	03
Connection Drawing(s)	04
Spare parts	05



Marks:

MODEL NUMBER:	5KS447SAA201D5	Estimated Weight:	2770 Lbs
Outline Drawing:	239C6800AA	Time Rating:	CONT
Connection Diagram:	GEM2034E-FIG7	Enclosure:	TEFC
Instruction Book:	GEI-56128	Encl Construction:	X\$D
Design Code:	49BD1177A	Ambient Max(°C):	40
Type:	KS	Alt Ambient Max(°C):	60
Frame:	447T	Insulation Class:	H
Phases:	3	NEMA Design:	B
Poles:	4	Nominal Efficiency:	96.2 %
Output Power:	200HP 148KW	Guaranteed Efficiency:	95.8
RPM:	1790	3/4 Load Efficiency:	96.5
Voltage:	460	KVA Code:	G
Hertz:	60	Max KVAR:	43.5
Amps - FL:	219.0	Power Factor:	89.0
Service Factor:	1.15	Bearing - DE:	NU 318
Alt Service Factor:	1.00	Bearing - ODE:	6318ZC3

Enclosure is Totally Enclosed Fan-Cooled

Stamped Nameplate Notes:

ROLLER BEARING - FOR BELTED LOAD ONLY
 STAMP NP249A5564P051 AS BELOW:
 MODEL:5KS447SAA201D5 S/N: XXX
 CSA CERTIFIED CSA09.2216219 FOR EX NA IIC 200 C GC
 CL 1 ZONE2 AEX NA IIC 200C;CL 1 DIV2 GRP ABCD 200C
 IN -40C <= AMB <= 40C, 1.0 SF ON SINE-WAVE PWR
 SURF TEMP 260C AT 1.15SF ON SINE-WAVE PWR
 OR 215 C VT OR 215 C CT OR 215 C CHP PWM CONTROL
 ALTERNATE RATING FOR PWM CONTROL 1.0SF 40C AMB
 VT 0-60 HZ, CT 45-60 HZ, CHP 60-75 HZ.

Additional Information:

4P - T EXTN
 700 CU IN - 3.00" NPT
 OIL RESISTANT SLEEVING ON LEADS
 B5F4C4 HIGH FATIGUE STEEL AISI 4142 SHAFT MATERIAL
 F1 MOUNTING

Performance Characteristics

1st Winding 1st Connection

Design: 49BD1177A

Marks:

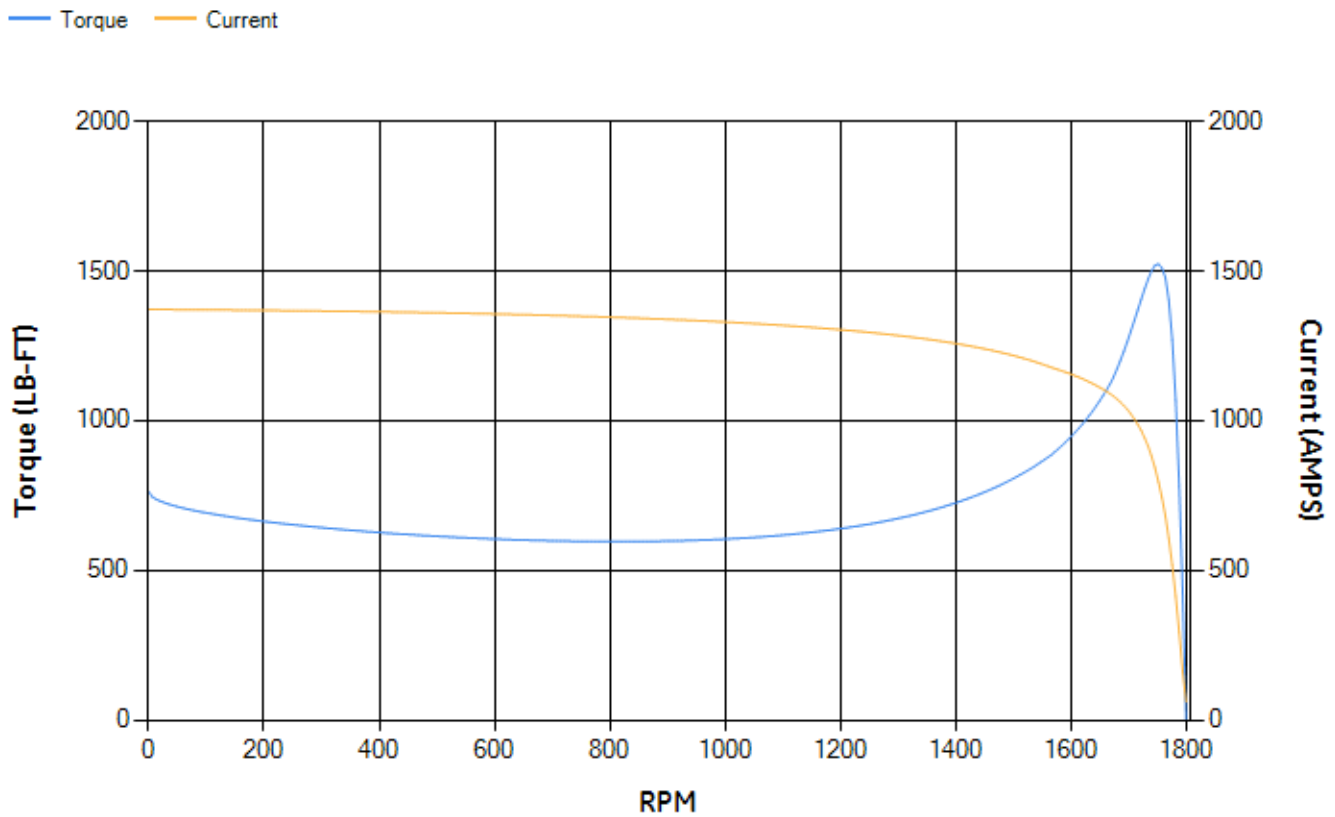
LOAD %	125.0	115.0	100.0	75.0	50.0	25.0	0.0
% EFF	95.58	95.82	96.34	96.52	96.53	95.25	0.00
% PF	89.21	89.17	88.77	86.64	80.39	60.8	3.09
AMPS	274.43	251.93	218.89	167.88	120.6	80.81	60.61

TORQ(FL)#FT	586.55	TORQ(LR)%FL	130.07	TORQ(BD)%FL	259.53
AMPS(LR)	1371.63	PF AT START	0.25		

This motor is capable of two cold or one hot start with a maximum connected load inertia of 4712 Lb-Ft Sq (198.38 Kg-meter Sq)at 100% voltage, where the load torque varies with the square of the speed. Acceleration time with maximum inertia and the above load type is 54 seconds. Safe stall time at 100% voltage is 163 seconds cold, 84 seconds hot. Rotor inertia is 106.11 Lb-Ft Sq (4.47 Kg-meter Sq).

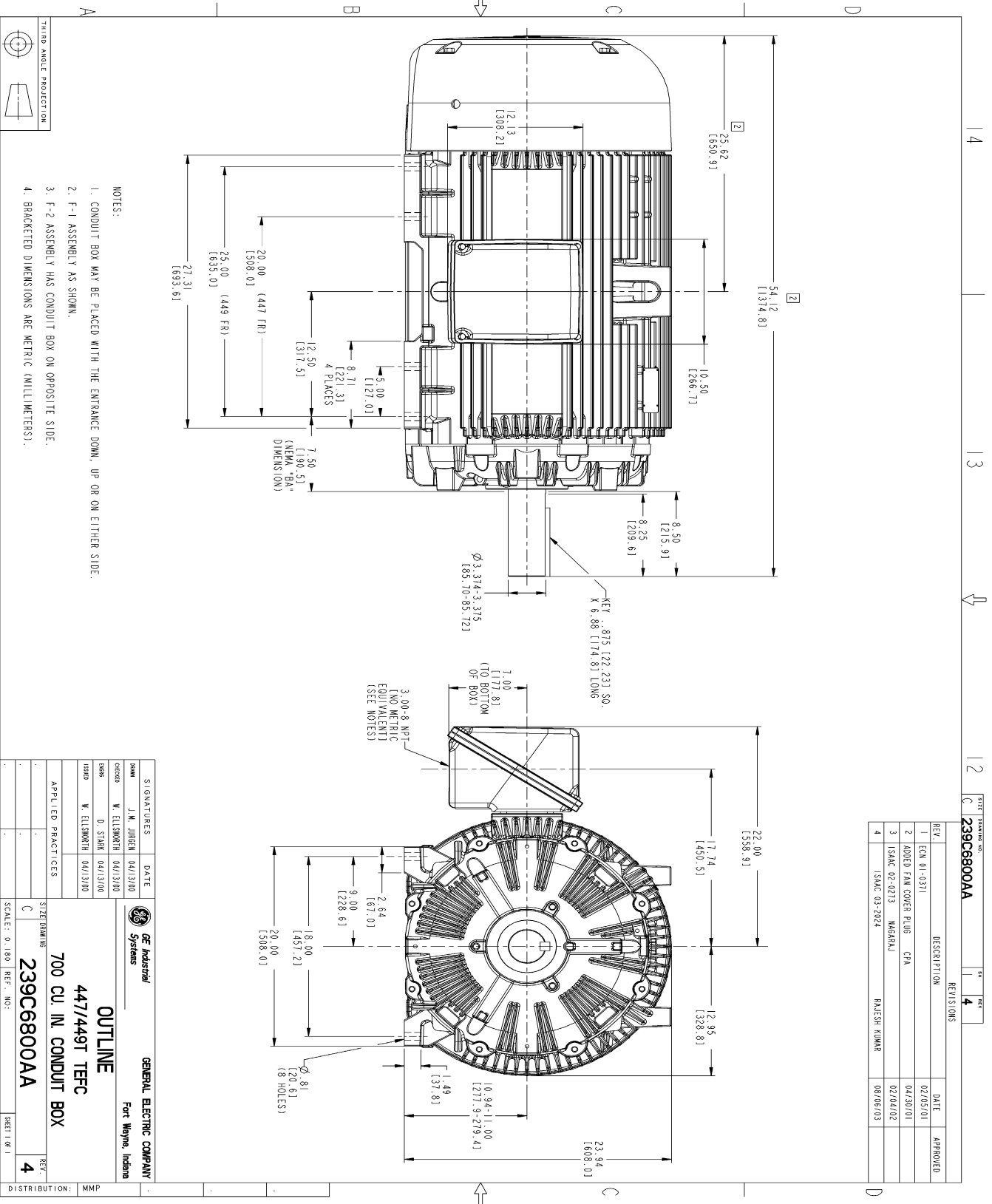
Open Circuit A-C:	1.751	Short Circuit D-C:	0.027
Short Circuit A-C:	0.07	X/R Ratio:	10.252
Stator Slots:	72	Rotor Slots:	58

Speed Torque Current Curve (First Connection, First Speed)



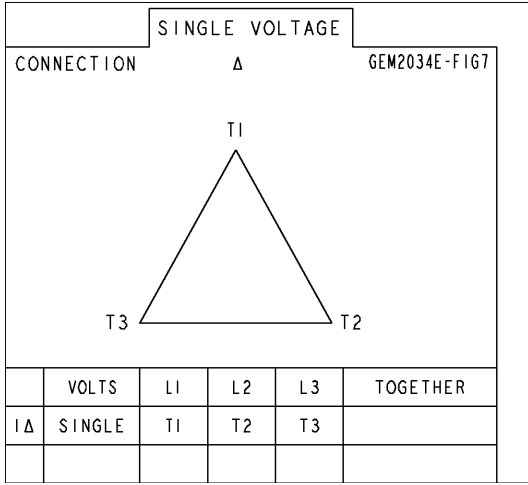
NAME: 103016807 OBJECT: 239C6800AA DATE: 08-Aug-03 12:01:27

Marks:



Marks:

Connection Diagram
GEM2034E-FIG7



End shield Assembly		
Part Description	DE Side Part#	ODE Side Part#
End Shield	115E4355AA1	115E4355LL1
Bearing	235A2519AA01	235A2514AG01
Slinger/Inproseal	149C4399G07	149C4399G07

Fan & Fan Cover Assembly	
Part Description	Part#
Fan	159C7100AA2
Fan Cover	128D6841AA1

Conduit & Accessories Box Assembly	
Part Description	Part#
Conduit Box	118D4408AD2

Mechanical Accessories	
Part Description	Part#
Brake	
Tachometer	