

Product Information Packet

November 7, 2016

Data shown is for the current revision model #. Ensure your nameplate model # matches.

Model Number:	5CD164MA038A028
Catalog Number:	D439
Instruction Manual:	GEH-3967N
Connection Diagram:	36A167760CA501
Outline Drawing:	36A167943AA001

Accessory Connection Diagrams			
Bearing Thermocouple:	None	Heater:	None
RTD:	None	Thermistor:	None
Thermostat:	None	Winding Thermocouple:	None
Bearing RTD:	None		

Table of Contents	
Specification	01
Outline Drawing	02
Connection Drawing(s)	03

Marks:

MODEL NUMBER:	5CD164MA038A028	Enclosure Mtg Assem:	36A167770BC001
Outline Drawing:	36A167943AA001	Instruction Book:	GEH-3967N
Connection Diagram:	36A167760CA501	RPM:	1750/2300
Horsepower:	20	Armature Amps:	35
Armature Volts:	500	Type:	CD259AT
Wound:	SHUNT	Power Supply Code:	D
Enclosure:	DPFG-SV	Insulation Class:	F
Duty:	CONT	Ambient Max (°C):	40 C
Rating Code:	164M1340-00	Field Volts:	300/150
K(V):	2.47 Cemf volts/Radian/Sec	WK2:	3.31Lb Ft2
K(T):	1.71 Ft/Amp	Year of Manufacture:	2016
Minimum Ambient:	0 C	Max Altitude:	3300 Ft

Resistances at 25 Degrees C :

Shunt Field:	153 OHMS
Armature:	.7312 OHMS
Commutator Field:	.2429 OHMS

Inductances:

Armature Circuit Total:	17.940 mH Saturated
Shunt Field:	116.0 Henries Unsaturated

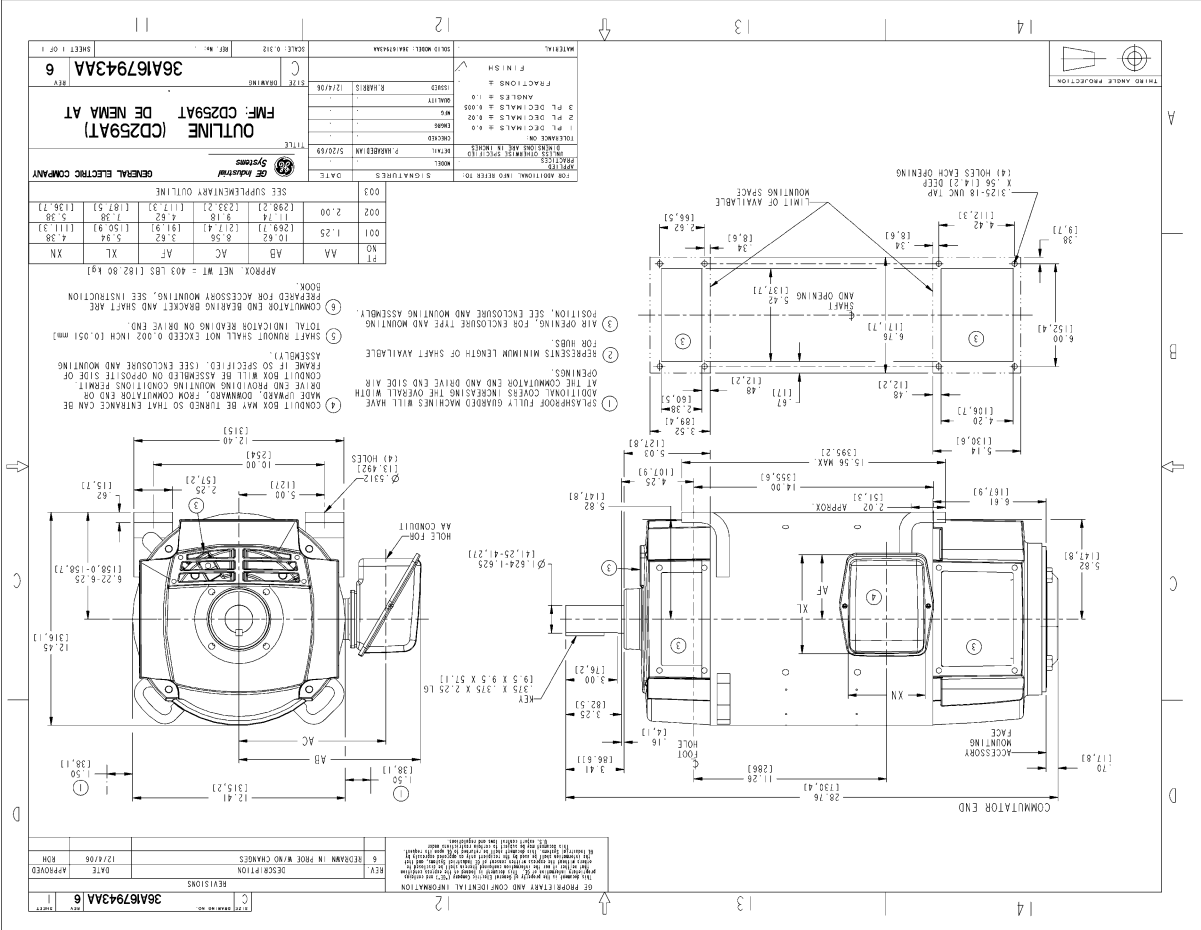
Shunt Field Data:

Shunt Field Current(1): 1.53 AMPS at Rated Load and 1750 RPM
 Shunt Field Current(2): 1.19 AMPS at Rated Load and 1933 RPM
 Shunt Field Current(3): .83 AMPS at Rated Load and 2300 RPM

Additional Machine Notes:

DRIPPROOF FULLY GUARDED, SEPARATELY VENTILATED
 - BALL BEARINGS
 CONDUIT BOX ON LEFT HAND SIDE FACING COMMUTATOR END
 STANDARD SHAFT DRIVE END ONLY - WITH FEET
 SEPARATELY VENTILATED AT 160 CFM
 PRESSURE DROP AT .45 INCHES OF WATER
 WITH:
 CSA STAMP
 THERMOSTAT- NORMALLY CLOSED, AC RATING- 600V MAX-
 .5A, 250V-1.5A, OR 125V-3A, DC RATING- 30V MAX-
 1.5A.MAXIMUM CURRENT BASED ON INDUCTIVE LOADS UP
 TO AND INCLUDING NEMA NO.5 CONTACTOR.

Marks:



REV	DATE	DESCRIPTION
1	12/7/95	REVISIONS
2	12/7/95	REVISIONS
3	12/7/95	REVISIONS
4	12/7/95	REVISIONS
5	12/7/95	REVISIONS
6	12/7/95	REVISIONS

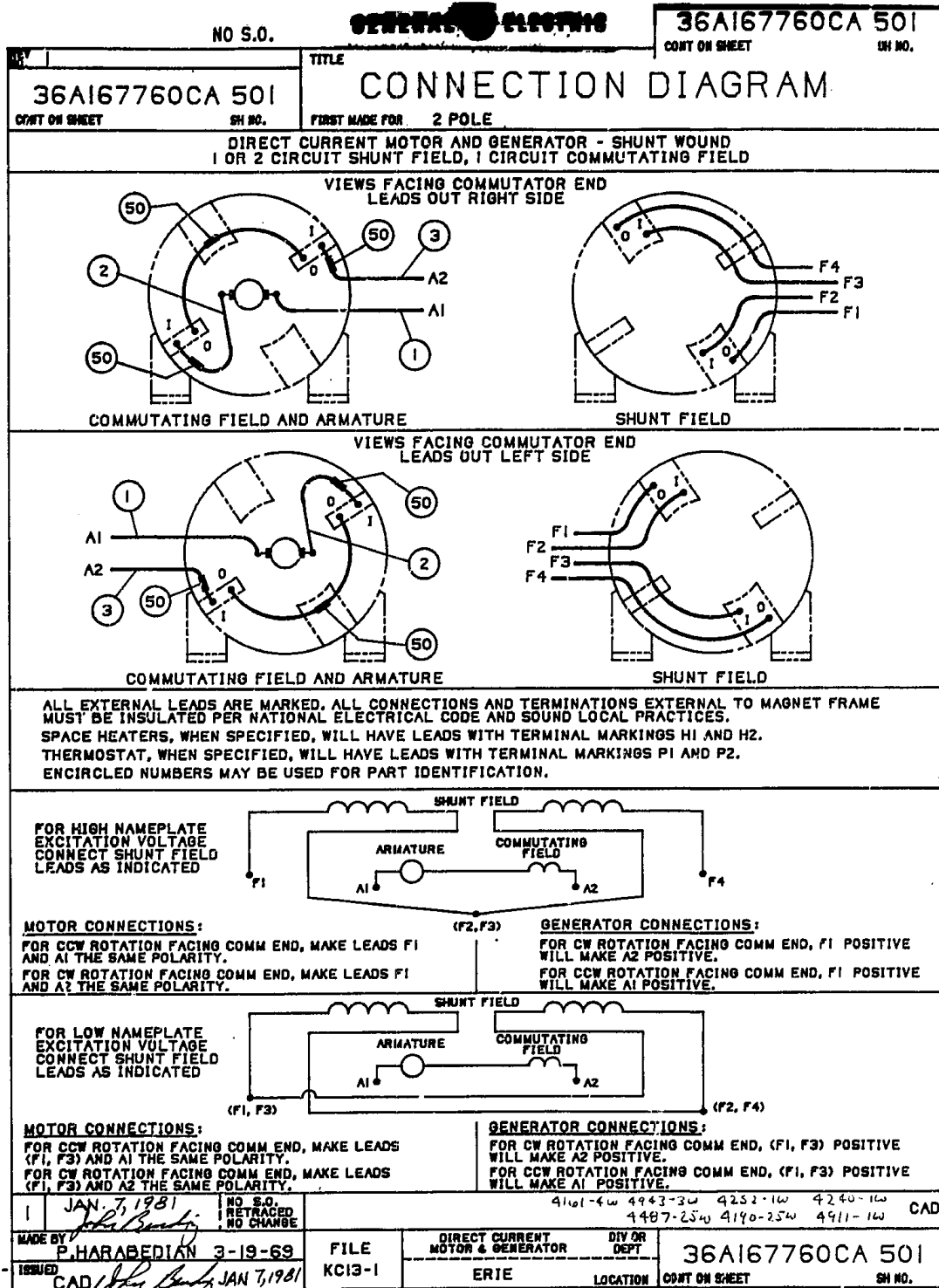
REV	DATE	DESCRIPTION
1	12/7/95	REVISIONS
2	12/7/95	REVISIONS
3	12/7/95	REVISIONS
4	12/7/95	REVISIONS
5	12/7/95	REVISIONS
6	12/7/95	REVISIONS

REV	DATE	DESCRIPTION
1	12/7/95	REVISIONS
2	12/7/95	REVISIONS
3	12/7/95	REVISIONS
4	12/7/95	REVISIONS
5	12/7/95	REVISIONS
6	12/7/95	REVISIONS

REV	DATE	DESCRIPTION
1	12/7/95	REVISIONS
2	12/7/95	REVISIONS
3	12/7/95	REVISIONS
4	12/7/95	REVISIONS
5	12/7/95	REVISIONS
6	12/7/95	REVISIONS

REV	DATE	DESCRIPTION
1	12/7/95	REVISIONS
2	12/7/95	REVISIONS
3	12/7/95	REVISIONS
4	12/7/95	REVISIONS
5	12/7/95	REVISIONS
6	12/7/95	REVISIONS

Marks:



DORM.36A167760CA501R01
PLT.64 SCL