

Product Information Packet

November 8, 2016

Data shown is for the current revision model #. Ensure your nameplate model # matches.

Model Number:	5KS284STE115A
Catalog Number:	M7709
Instruction Manual:	GEI-M1031
Connection Diagram:	GEM2034E-FIG210
Outline Drawing:	358B6273AB

Accessory Connection Diagrams			
Bearing Thermocouple:	None	Heater:	None
RTD:	None	Thermistor:	None
Thermostat:	None	Winding Thermocouple:	None
Bearing RTD:	None		

Table of Contents	
Specification	01
Performance Characteristics	02
Outline Drawing	03
Connection Drawing(s)	04

Marks:

MODEL NUMBER:	5KS284STE115A	Estimated Weight:	450 Lbs
Outline Drawing:	358B6273AB	Time Rating:	CONT
Connection Diagram:	GEM2034E-FIG210	Enclosure:	TEFC
Instruction Book:	GEI-M1031	Encl Construction:	SD
Design Code:	28AD0011A	Ambient Max(°C):	40
Type:	KS	Alt Ambient Max(°C):	--
Frame:	284TS	Insulation Class:	F
Phases:	3	NEMA Design:	A
Poles:	2	Nominal Efficiency:	91.7 %
Output Power:	25HP 18.5KW	Guaranteed Efficiency:	90.2
RPM:	3525	3/4 Load Efficiency:	92.8
Voltage:	230/460	KVA Code:	G
Hertz:	60	Max KVAR:	3.3
Amps - FL:	64.8/32.4	Power Factor:	90.5
Service Factor:	1.15	Bearing - DE:	6310ZZC3
Alt Service Factor:	--	Bearing - ODE:	6210ZZC3

Enclosure is Totally Enclosed Fan-Cooled

Stamped Nameplate Notes:

USABLE AT 200V @ 25 HP, 56.4 AMPS @ 1.0 SF

LRA: 298/149

50HZ DATA: 20 HP,200/400V,58.8/29.4 AMPS @ 1.15 SF

50HZ DATA: 25 HP,200/400V, 64.8/32.4AMPS @ 1.00 SF

GREASE TYPE: SHELL ALVANIA R3 LITHIUM GREASE

Additional Information:

CONDUIT BOX MATERIAL: CAST IRON

SUITABLE FOR USE IN CLASS I DIVISION 2 LOCATIONS

CLASS I DIVISION 2 GROUPS A,B,C,D T3C

CLASS I ZONE 2 IIC T3C



Performance Characteristics

1st Winding 1st Connection

Design: 28AD0011A

Marks:

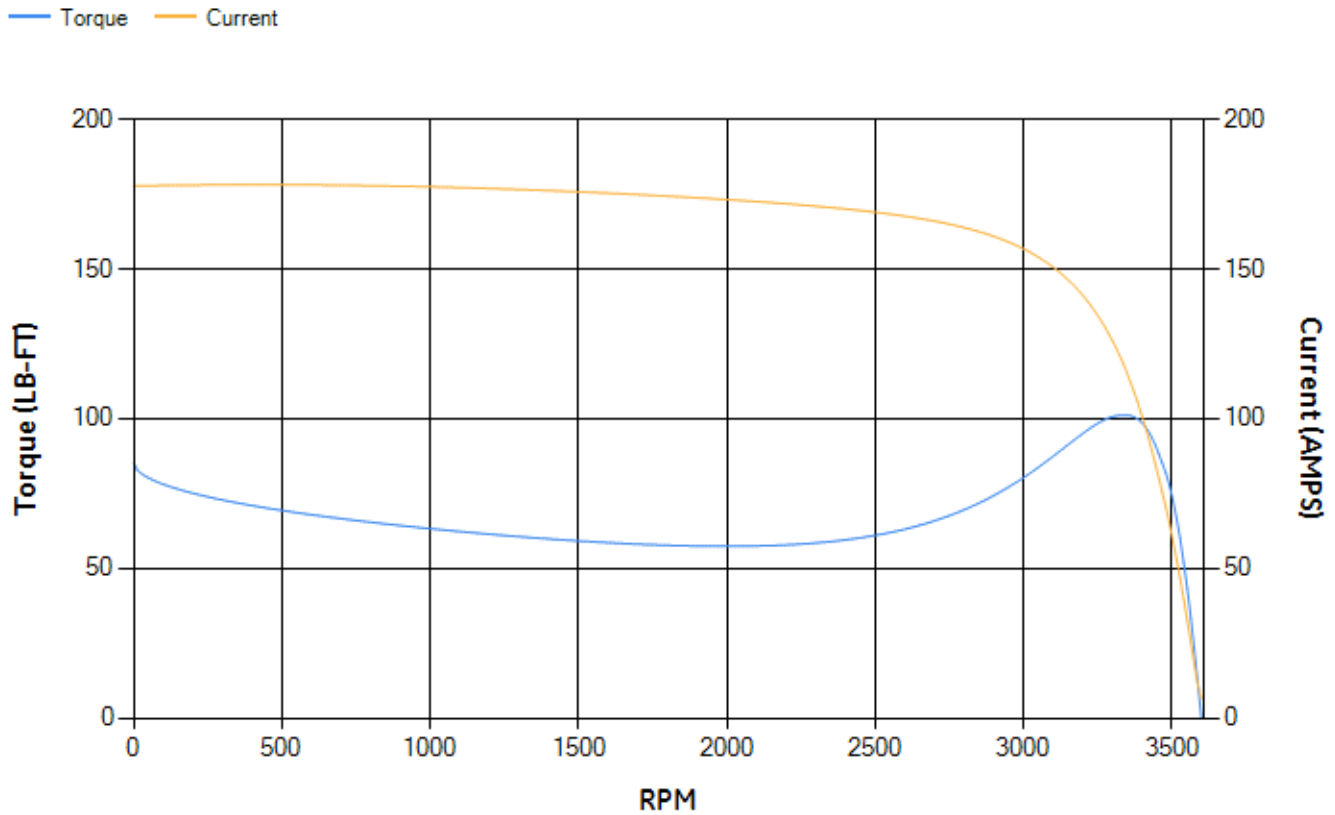
LOAD %	125.0	115.0	100.0	75.0	50.0	25.0	0.0
% EFF	92.08	92.36	92.87	92.79	91.92	87.61	0.00
% PF	90.77	90.85	90.7	89.32	84.81	69.38	11.59
AMPS	34.99	32.07	27.78	21.17	15.01	9.62	6.39

TORQ(FL)#FT	36.98	TORQ(LR)%FL	230.94	TORQ(BD)%FL	271.66
AMPS(LR)	177.75	PF AT START	0.33		

This motor is capable of two cold or one hot start with a maximum connected load inertia of 228 Lb-Ft Sq (9.6 Kg-meter Sq)at 100% voltage, where the load torque varies with the square of the speed. Acceleration time with maximum inertia and the above load type is 48 seconds. Safe stall time at 100% voltage is 82 seconds cold, 58 seconds hot. Rotor inertia is 2.73 Lb-Ft Sq (0.11 Kg-meter Sq).

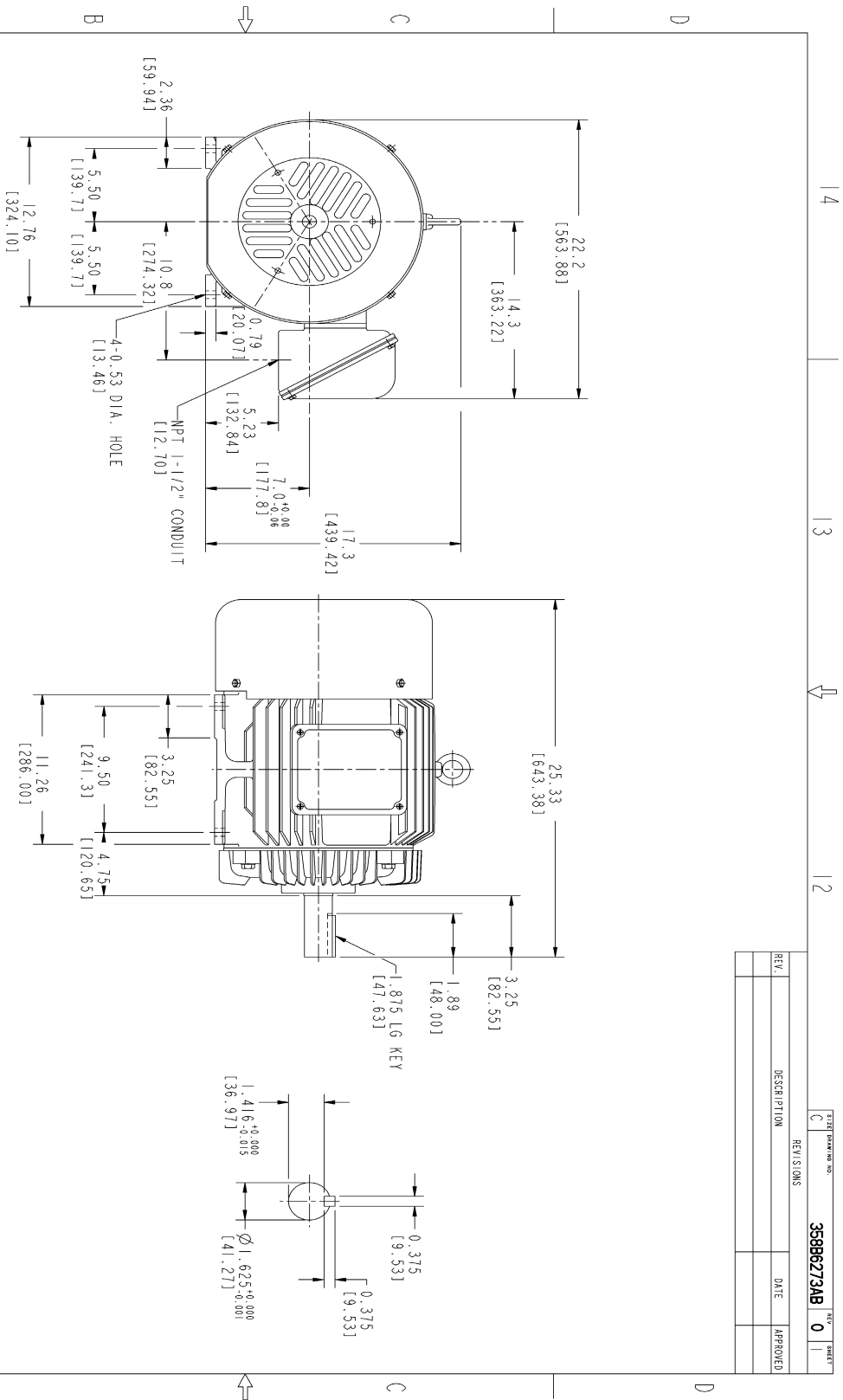
Open Circuit A-C:	0.826	Short Circuit D-C:	0.019
Short Circuit A-C:	0.022	X/R Ratio:	7.125
Stator Slots:	36	Rotor Slots:	28

Speed Torque Current Curve (First Connection, First Speed)



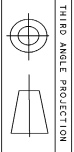
NAME:501291659 OBJECT:358B6273AB DATE:05-Dec-07 10:31:19

Marks:



NOTES :

1. DIMENSIONS ARE IN INCHES.
2. F-I ASM AS SHOWN.
3. F-2 ASM - HAS CONDUIT BOX ON OPPOSITE SIDE.
4. BRACKETED DIMENSIONS ARE METRIC (MILLIMETERS)
5. IC411, IP54, IMB34 APPLY



THIRD ANGLE PROJECTION

Part must conform to SI 900000
Sect 4, Toxicity Procedure

FOR ADDITIONAL INFO REFER TO:		SIGNATURES		DATE	
REFLECTED DIMENSIONS	DETAIL	DATE	DATE	DATE	DATE
UNLESS OTHERWISE SPECIFIED	DETAIL	DATE	DATE	DATE	DATE
DIMENSIONS ARE IN INCHES	DETAIL	DATE	DATE	DATE	DATE
TOLERANCE ON:	DETAIL	DATE	DATE	DATE	DATE
1 PL DECIMALS ±	DETAIL	DATE	DATE	DATE	DATE
2 PL DECIMALS ±	DETAIL	DATE	DATE	DATE	DATE
3 PL DECIMALS ±	DETAIL	DATE	DATE	DATE	DATE
ANGLES ±	DETAIL	DATE	DATE	DATE	DATE
FRACTIONS ±	DETAIL	DATE	DATE	DATE	DATE
FINISH	DETAIL	DATE	DATE	DATE	DATE
MATERIAL	DETAIL	DATE	DATE	DATE	DATE
SOLID MODEL MODEL NAME	DETAIL	DATE	DATE	DATE	DATE

GE Consumer & Industrial
GENERAL ELECTRIC COMPANY

OUTLINE
FTD - 284TS TERC CE MARK
2729 CU IN CONDUIT BOX

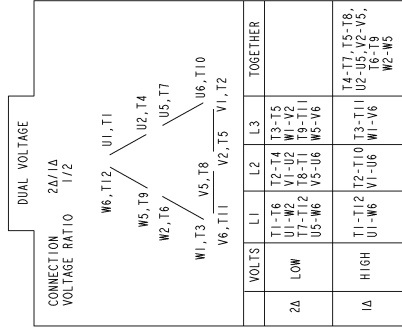
358B6273AB
REV 0

REV.	DESCRIPTION	DATE	APPROVED

358B6273AB REV 0

Marks:

Connection Diagram
GEM2034E-FIG210



NAME:501452353 OBJECT:GEM2034E-FIG210 DATE:25-Feb-08 14:03:35