

Product Information Packet

November 8, 2016

Data shown is for the current revision model #. Ensure your nameplate model # matches.

Model Number:	5KS326STE204A
Catalog Number:	M7536
Instruction Manual:	GEI-M1031
Connection Diagram:	GEM2034E-FIG7
Outline Drawing:	358B6274AC

Accessory Connection Diagrams			
Bearing Thermocouple:	None	Heater:	None
RTD:	None	Thermistor:	None
Thermostat:	None	Winding Thermocouple:	None
Bearing RTD:	None		

Table of Contents	
Specification	01
Performance Characteristics	02
Outline Drawing	03
Connection Drawing(s)	04

Marks:

MODEL NUMBER:	5KS326STE204A	Estimated Weight:	724 Lbs
Outline Drawing:	358B6274AC	Time Rating:	CONT
Connection Diagram:	GEM2034E-FIG7	Enclosure:	TEFC
Instruction Book:	GEI-M1031	Encl Construction:	SD
Design Code:	32AD1010B	Ambient Max(°C):	40
Type:	KS	Alt Ambient Max(°C):	--
Frame:	326T	Insulation Class:	F
Phases:	3	NEMA Design:	A
Poles:	4	Nominal Efficiency:	94.5 %
Output Power:	50HP 37KW	Guaranteed Efficiency:	93.6
RPM:	1780	3/4 Load Efficiency:	94.6
Voltage:	575	KVA Code:	J
Hertz:	60	Max KVAR:	10.4
Amps - FL:	46.3	Power Factor:	85.5
Service Factor:	1.15	Bearing - DE:	6312
Alt Service Factor:	--	Bearing - ODE:	6212

Enclosure is Totally Enclosed Fan-Cooled

Stamped Nameplate Notes:**Additional Information:**

4 POLE, TEFC, LRA: 356.9 AMPS
 SOUND POWER : 89 DBA
 GREASE: EXXON POLYREX EM
 NO. OF MOTOR LEADS: 3
 CONDUIT BOX VOLUME (CU IN): 272.9
 CONDUIT BOX MATERIAL: CAST IRON
 SUITABLE FOR USE IN CLASS I DIVISION 2 LOCATIONS
 CLASS I DIVISION 2 GROUPS A,B,C,D T3C
 CLASS I ZONE 2 IIC T3C

Performance Characteristics

1st Winding 1st Connection

Design: 32AD1010B

Marks:

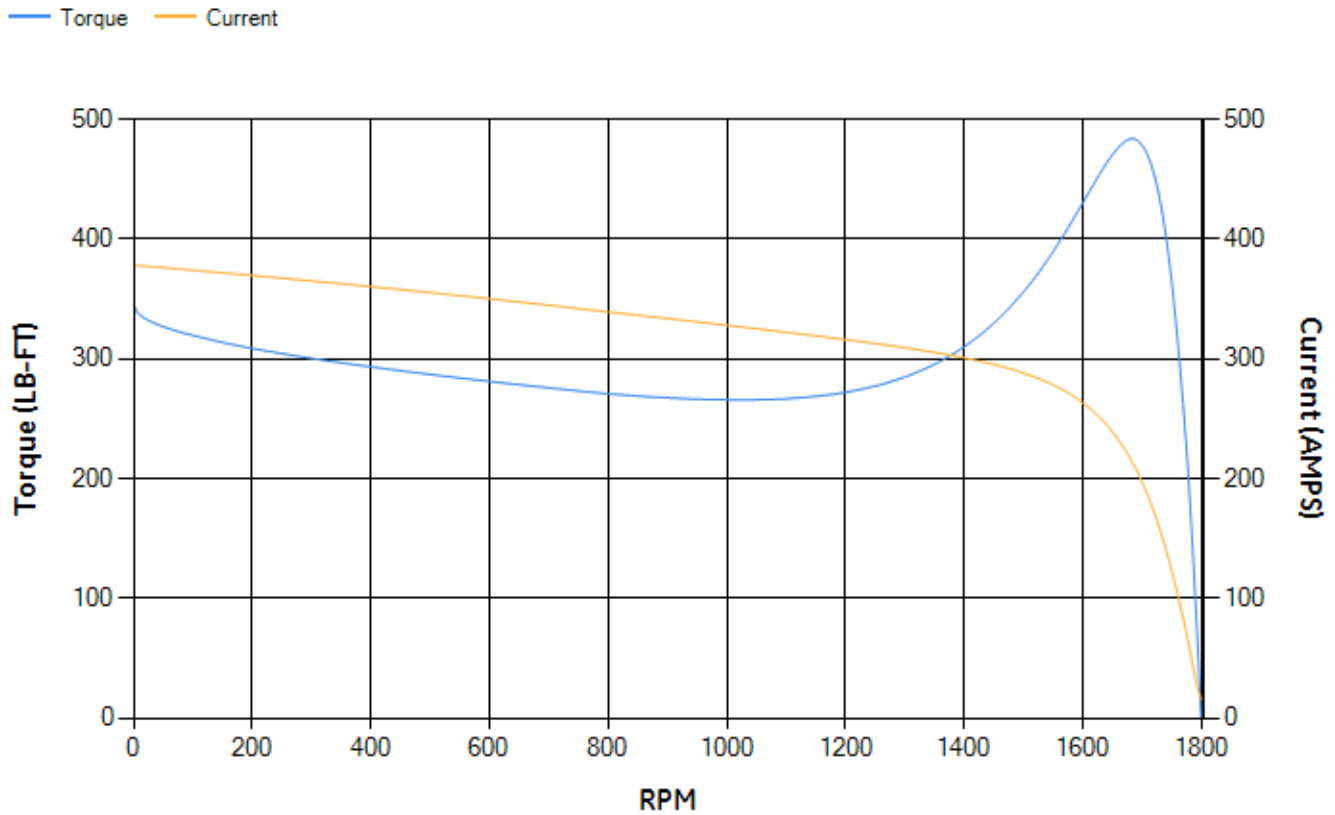
LOAD %	125.0	115.0	100.0	75.0	50.0	25.0	0.0
% EFF	94	94.22	94.66	94.56	93.9	90.58	0.00
% PF	86	85.8	85.03	81.9	73.92	53.15	5.53
AMPS	57.89	53.26	46.51	36.26	26.97	19.44	15.61

TORQ(FL)#FT	147.48	TORQ(LR)%FL	233.99	TORQ(BD)%FL	327.12
AMPS(LR)	378.19	PF AT START	0.33		

This motor is capable of two cold or one hot start with a maximum connected load inertia of 1417 Lb-Ft Sq (59.66 Kg-meter Sq)at 100% voltage, where the load torque varies with the square of the speed. Acceleration time with maximum inertia and the above load type is 32 seconds. Safe stall time at 100% voltage is 60 seconds cold, 38 seconds hot. Rotor inertia is 10.04 Lb-Ft Sq (0.42 Kg-meter Sq).

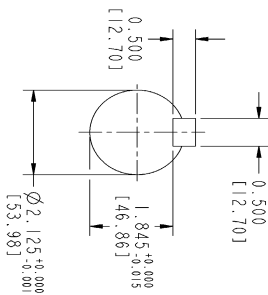
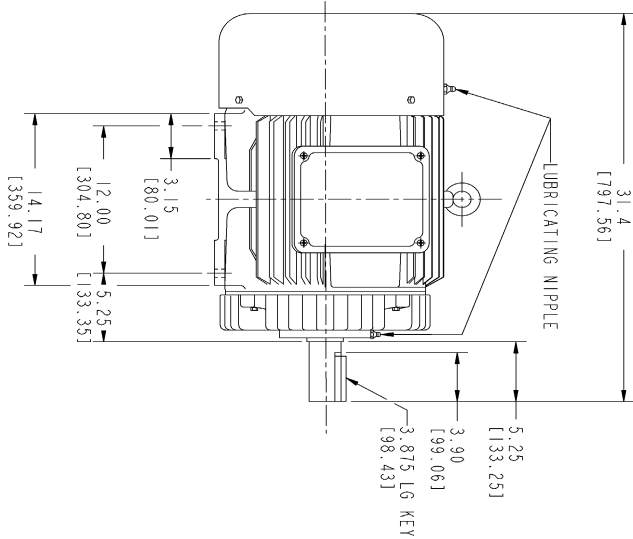
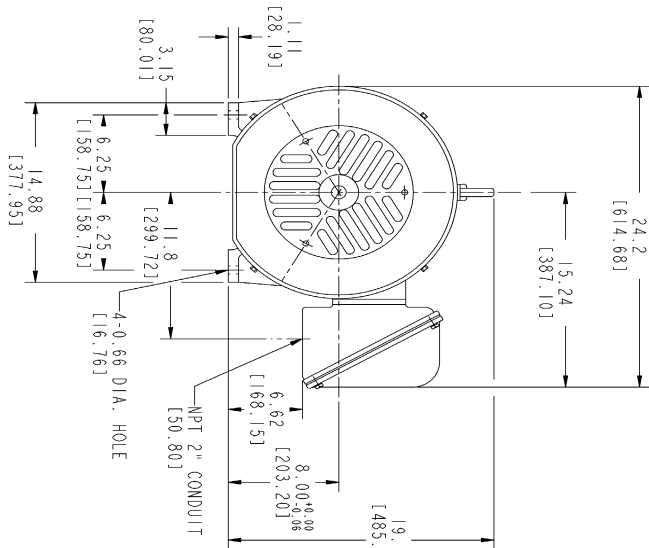
Open Circuit A-C:	0.695	Short Circuit D-C:	0.022
Short Circuit A-C:	0.026	X/R Ratio:	8.369
Stator Slots:	48	Rotor Slots:	40

Speed Torque Current Curve (First Connection, First Speed)

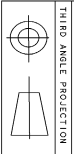


NAME:501291659 OBJECT:358B6274AC DATE:05-Dec-07 10:40:01

Marks:



- NOTES :
1. DIMENSIONS ARE IN INCHES.
 2. F-I ASM AS SHOWN.
 3. F-2 ASM - HAS CONDUIT BOX ON OPPOSITE SIDE.
 4. BRACKETED DIMENSIONS ARE METRIC (MILLIMETERS)
 5. ICA11, IP54, IMB34 APPLY



THIRD ANGLE PROJECTION

Part must conform to SI 900000 Sect 4, Toxicity Procedure

REV.	DESCRIPTION	DATE	APPROVED

STANDARD NO. 358B6274AC REV. 0 SHEET 1 OF 1

FOR ADDITIONAL INFO REFER TO:	SIGNATURES	DATE	<p>GE Consumer & Industrial</p> <p>GENERAL ELECTRIC COMPANY</p>
REFLECTED DIMENSIONS SPECIFIED IN INCHES DIMENSIONS IN MILLIMETERS TOLERANCES ON FRACTIONS ± 2 PL DECIMALS ± 3 PL DECIMALS ± ANGLES ± FINISH	MODEL SKETCH R. MOORE ISSUED 11/14/07	DATE 11/14/07 11/14/07	
MATERIAL	SOLID MODEL	MODEL NAME	TITLE FTD - 326T TEFC CE MARK 2729 CU IN CONDUIT BOX 358B6274AC REV. 0

14 13 12 11

Marks:

Connection Diagram
GEM2034E-FIG7

