

Product Information Packet

January 13, 2017

Data shown is for the current revision model #. Ensure your nameplate model # matches.

Model Number:	5KS256SAE225A
Catalog Number:	V985
Instruction Manual:	GEK-95655
Connection Diagram:	GEM2034E-FIG3
Outline Drawing:	4002B5825PLP5210

Accessory Connection Diagrams			
Bearing Thermocouple:	None	Heater:	3027JE-1
RTD:	None	Thermistor:	None
Thermostat:	None	Winding Thermocouple:	None
Bearing RTD:	None		

Table of Contents	
Specification	01
Performance Characteristics	02
Outline Drawing	03
Connection Drawing(s)	04

Marks:

MODEL NUMBER:	5KS256SAE225A	Estimated Weight:	350 Lbs
Outline Drawing:	4002B5825PLP5210	Time Rating:	CONT
Connection Diagram:	GEM2034E-FIG3	Enclosure:	TEFC
Instruction Book:	GEK-95655	Encl Construction:	SD
Design Code:	25BD1163A	Ambient Max(°C):	40
Type:	KS	Alt Ambient Max(°C):	--
Frame:	L256HP10	Insulation Class:	H
Phases:	3	NEMA Design:	B
Poles:	4	Nominal Efficiency:	93 %
Output Power:	20HP 14.8KW	Guaranteed Efficiency:	91.7
RPM:	1775	3/4 Load Efficiency:	93.7
Voltage:	230/460	KVA Code:	G
Hertz:	60	Max KVAR:	6.2
Amps - FL:	47.6/23.8	Power Factor:	84.5
Service Factor:	1.15	Bearing - DE:	6309ZC3
Alt Service Factor:	--	Bearing - ODE:	6309-2ZC3

Enclosure is Totally Enclosed Fan-Cooled

Stamped Nameplate Notes:

PREMIUM EFFICIENT MOTOR
HTR LDS H 115V 60W
SEVERE DUTY
INVERTER DUTY PER NEMA MG1 PART 31
ALTERNATE RATING FOR PWM CONTROL:
1.0 SF VAR TORQUE RANGE 0-60 HZ
IP 55
SUITABLE FOR 190/380V 50 HZ WITH
56.4/28.2 AMPS AND 1460 RPM AT 1.0 S.F

Additional Information:

4P - HP EXTN
C/BOX 137 CU IN-1.25 NPT
AUX LEADS EXIT WITH MOTOR LEADS
RCF 5000 CPM, STATIC DEFLECTION .0014 INCHES &
CENTER OF GRAVITY 10.75 INCHES
SOLID SHAFT NORMAL THRUST
OIL RESISTANT SLEEVING ON LEADS
BEARING LIFE 8760 HOURS AT 856 LB THRUST

Performance Characteristics

1st Winding 1st Connection

Design: 25BD1163A

Marks:

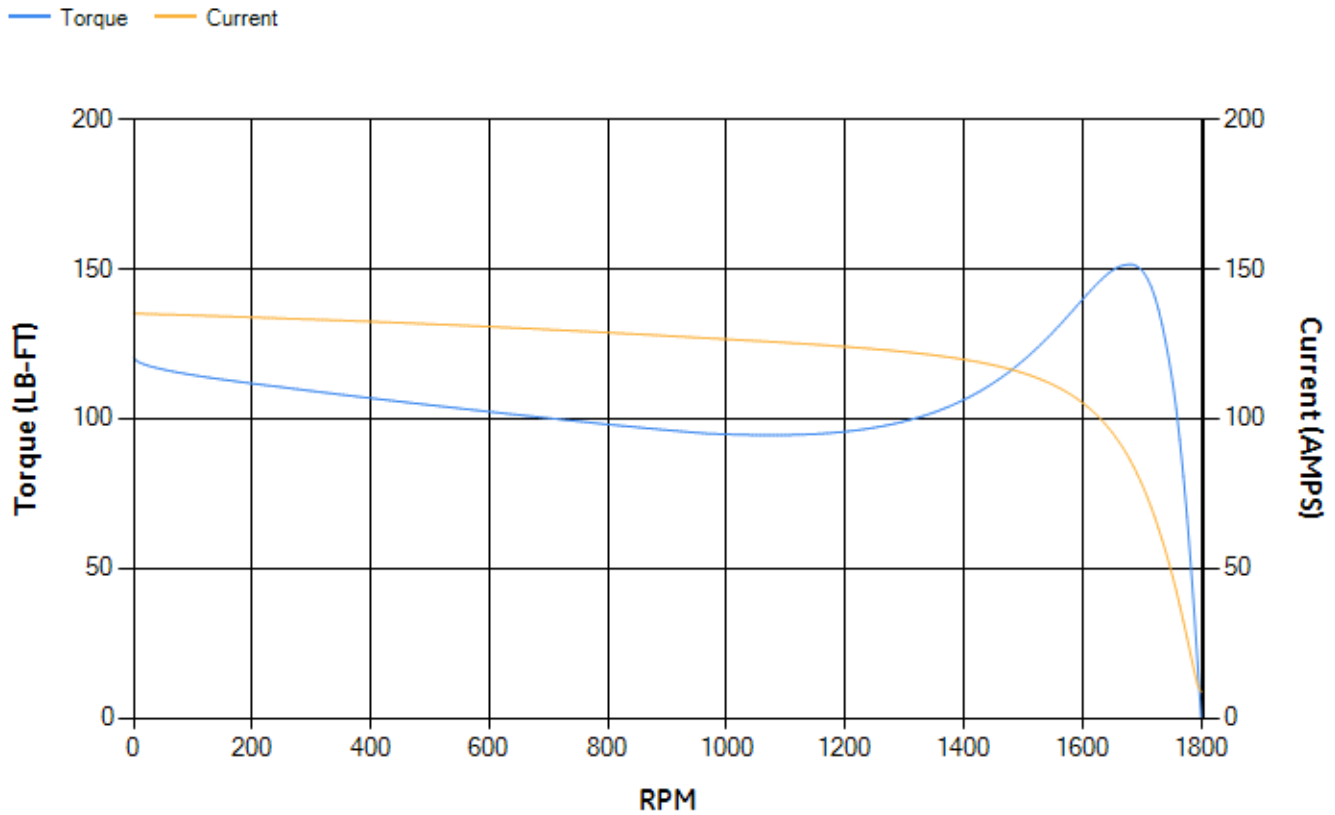
LOAD %	125.0	115.0	100.0	75.0	50.0	25.0	0.0
% EFF	92.13	92.56	93.31	93.72	93.6	91.02	0.00
% PF	86.1	85.75	84.73	80.95	71.89	49.85	4.4
AMPS	29.5	27.12	23.68	18.5	13.91	10.31	8.62

TORQ(FL)#FT	59.21	TORQ(LR)%FL	203.53	TORQ(BD)%FL	254.91
AMPS(LR)	135.12	PF AT START	0.45		

This motor is capable of two cold or one hot start with a maximum connected load inertia of 653 Lb-Ft Sq (27.49 Kg-meter Sq)at 100% voltage, where the load torque varies with the square of the speed. Acceleration time with maximum inertia and the above load type is 43 seconds. Safe stall time at 100% voltage is 98 seconds cold, 62 seconds hot. Rotor inertia is 3.04 Lb-Ft Sq (0.13 Kg-meter Sq).

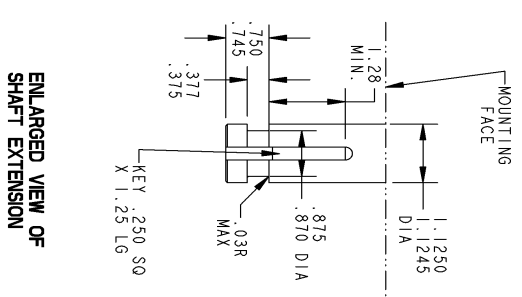
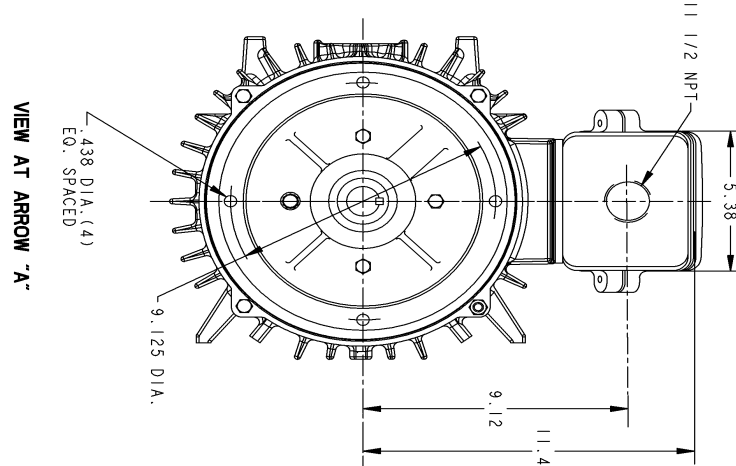
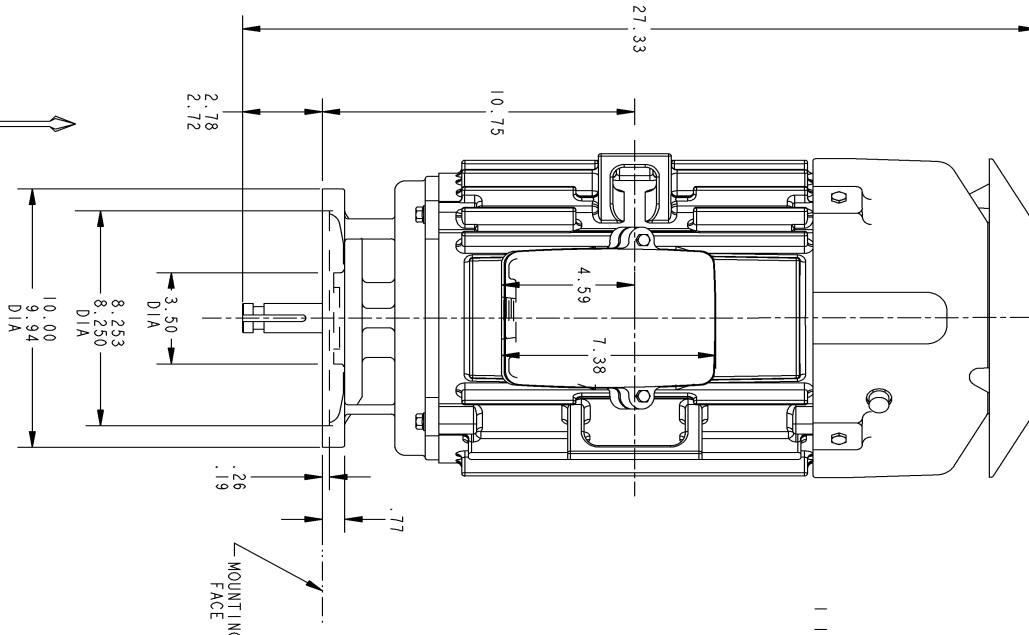
Open Circuit A-C:	0.483	Short Circuit D-C:	0.014
Short Circuit A-C:	0.024	X/R Ratio:	5.127
Stator Slots:	48	Rotor Slots:	40

Speed Torque Current Curve (First Connection, First Speed)




NAME:320002276 OBJECT:4002B5825PLP5210 DATE:13-Feb-09 16:29:27

Marks:



NOTE 1: CONDUIT BOX MAY BE ASSEMBLED WITH ENTRANCE UP, DOWN OR TO EITHER SIDE

VIEW AT ARROW "A"

CAD NO.	4002B5825PLP5210	PETERBOROUGH	4002B5825PLP5210
REF.	4002B5825PLP210	MOTOR PLAN	CONT. ON SHT. -
PLT CLASS			SHT. NO. 1
PLT SCALE	.25		
 INDUCTION MOTOR OUTLINE			
FIRST MADE FOR FR. K-L254HP10 CIR STANDARD VERTICAL 5KS2560PL6D99A T.E.F.C. SOLID SHAFT - NORMAL THRUST (OPL)			

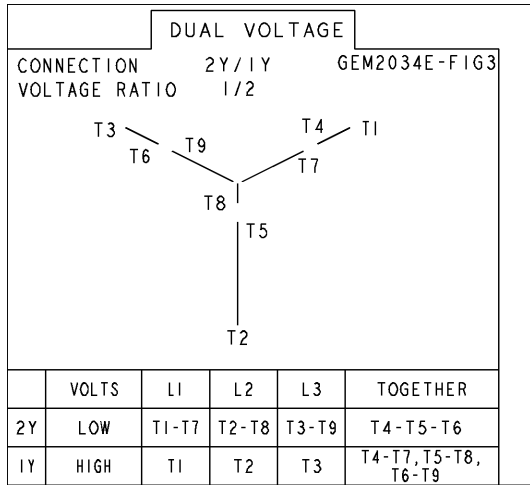
REV	DESCRIPTION	DATE	INT'L	4002B5825PLP5210	CONT. ON SHT. -	SHT. NO. 1
2	ISAC NO: # 09-0130 ATUL	02/12/09				
1	EXTRA DIMENSION REMOVED	06/24/03				

NAME	DATE
DRAMAN P. RAJU	06/23/03
CHEKED BHARATHI	06/23/03

CAD DRAWING - NO MANUAL REVISIONS PERMITTED

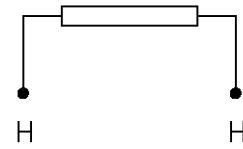
Marks:

Connection Diagram
GEM2034E-FIG3



Heater Connection
3027JE-1

FIG. 1
HEATER CONN.



CONTROL	L1	L2
VOLTAGE ONLY	H	H