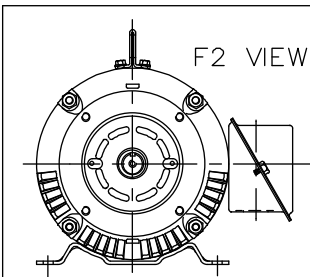
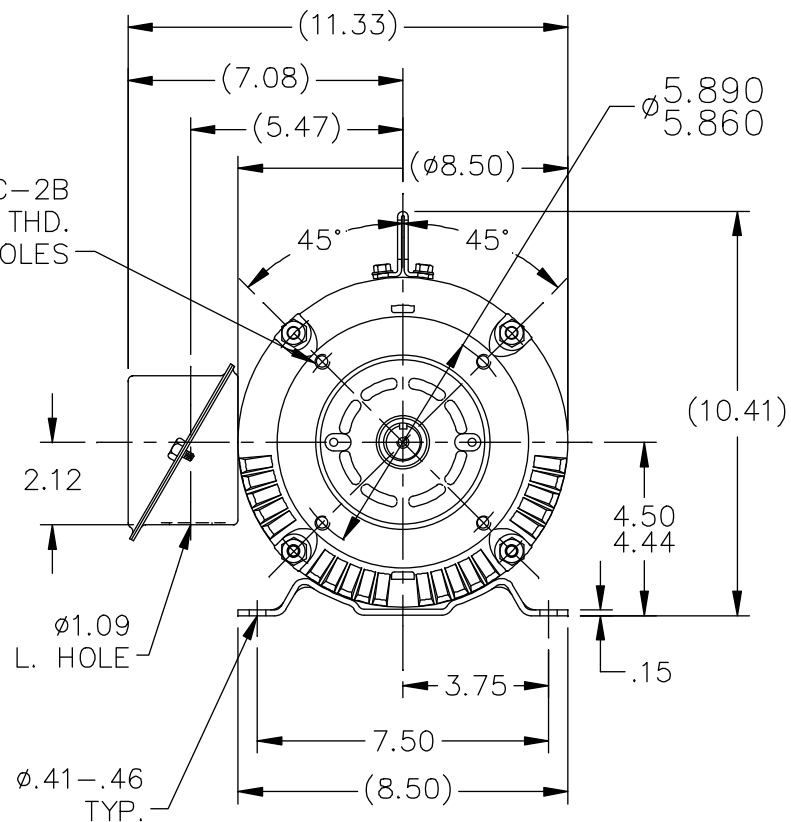
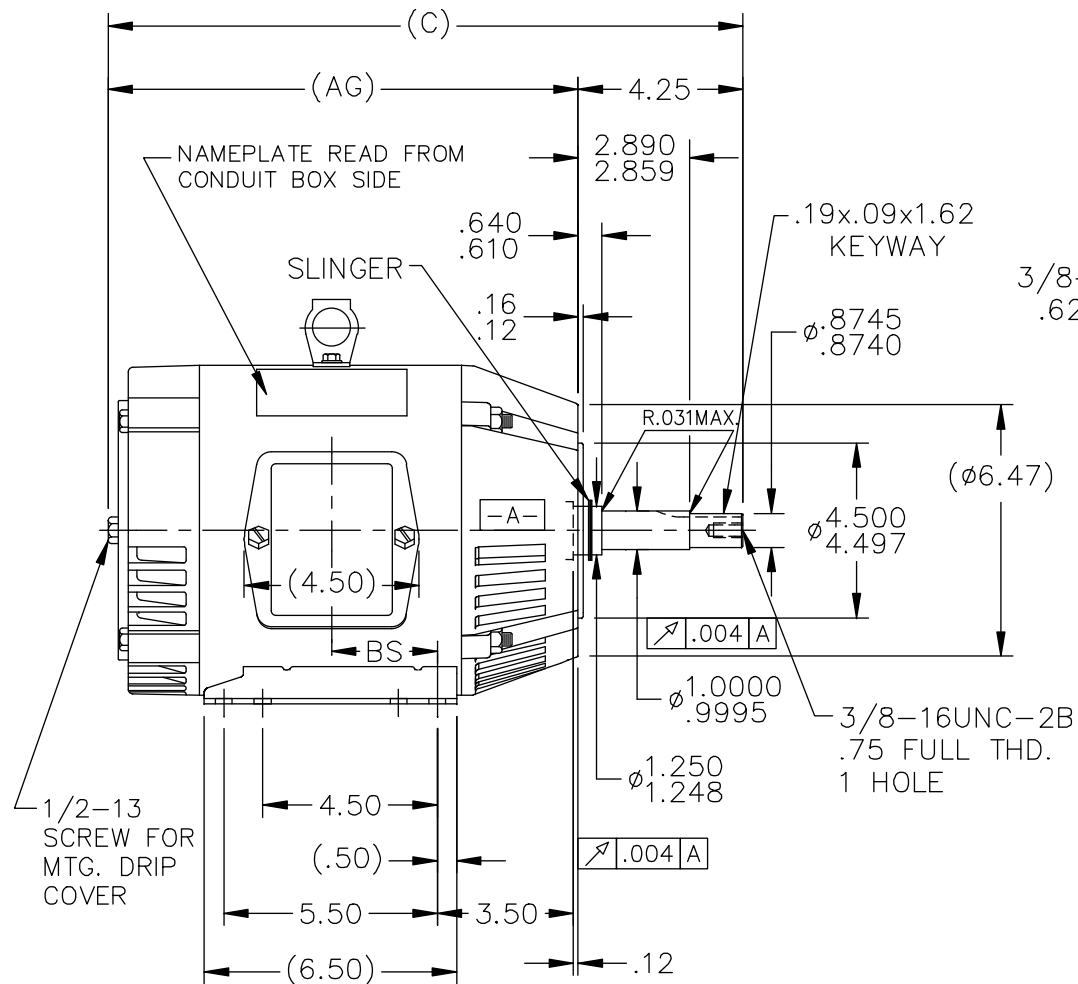


SS65051



DASH	FR.	C	AG	BS	MOUNTING
575	182JM	15.35	11.10	2.25	F1 OR F2
675	182/84JM	16.35	12.10	2.75	F1 OR F2
775	182/84JM	17.35	13.10	3.25	F1 ONLY

BOX CAN BE ROTATED IN 90° STEPS.
BOX CAN BE MOUNTED ON OPPOSITE
SIDE BY REMOVING BRACKETS AND
TURNING FRAME 180°.

18	UPDATED DRAWING	RJW 04-20-2007		TOLERANCES UNLESS SPECIFIED	
17	-675 & 775 NOW 182/84JM FRAMES CN 31857	DRS 11-01-2002	ML	DEC.	INCHES
16	ADDED FORMED LIFT LUG CN 34025	HLB 06-29-2001		.X	±.1
15	ADDED MOUNTING TYPE CN 27451	DRS 04-29-1999		.XX	±.03
14	REMOVED EYEBOLT	BLR 11-09-1995		.XXX	±.005
13	ADDED NEW BASE CN 14442	RM 06-24-1994		.XXXX	±.0005
NO.	REVISION	BY & DATE	CHK	ANG	±7'30"



TITLE	OUTLINE
180T FR. - BB - TS - DR.PR. - C'FACE	

MAT'L.

FINISH

DRAWN DJK 12-15-1992

CHK	ML 12-16-1992
-----	---------------

APPD GK 12-16-1992

SCALE	1=5
-------	-----

REF

FMF	
-----	--

PREV

THIS DRAWING IN DESIGN AND DETAIL IS OUR PROPERTY AND MUST NOT BE USED EXCEPT
IN CONNECTION WITH OUR WORK ALL RIGHTS OF DESIGN AND INVENTION ARE RESERVED
THIS IS AN ELECTRONICALLY GENERATED DOCUMENT – DO NOT SCALE THIS PRINT

RFP

DIST	LB
------	----

CAD FILE	ss65051
----------	---------

SIZE	A
------	---

DRAWING NO.	PAGE	OF
SS65051		

REV.
18