

Product Information Packet

November 7, 2016

Data shown is for the current revision model #. Ensure your nameplate model # matches.

Model Number:	5KS405ATE208A
Catalog Number:	E741
Instruction Manual:	GEI-M1023
Connection Diagram:	GEM2034E-FIG8
Outline Drawing:	358B6203AC

Accessory Connection Diagrams			
Bearing Thermocouple:	None	Heater:	None
RTD:	None	Thermistor:	None
Thermostat:	None	Winding Thermocouple:	None
Bearing RTD:	None		

Table of Contents	
Specification	01
Performance Characteristics	02
Outline Drawing	03
Connection Drawing(s)	04



Marks:

MODEL NUMBER:	5KS405ATE208A	Estimated Weight:	1300 Lbs
Outline Drawing:	358B6203AC	Time Rating:	CONT
Connection Diagram:	GEM2034E-FIG8	Enclosure:	DP
Instruction Book:	GEI-M1023	Encl Construction:	OPEN
Design Code:	40AD1003A	Ambient Max(°C):	40
Type:	KS	Alt Ambient Max(°C):	--
Frame:	405T	Insulation Class:	F
Phases:	3	NEMA Design:	A
Poles:	4	Nominal Efficiency:	95.4 %
Output Power:	125HP 92.5KW	Guaranteed Efficiency:	94.5
RPM:	1785	3/4 Load Efficiency:	96.2
Voltage:	460	KVA Code:	G
Hertz:	60	Max KVAR:	29.6
Amps - FL:	139	Power Factor:	86.5
Service Factor:	1.15	Bearing - DE:	6317
Alt Service Factor:	--	Bearing - ODE:	6313

Enclosure is Dripproof

Stamped Nameplate Notes:**Additional Information:**

4 POLE DP
 LRA AT 460 VOLTS: 968.3 AMPS
 NO. OF MOTOR LEADS: 6
 CONDUIT BOX VOLUME (IN³): 1240
 CONDUIT BOX MTL: STAMPED STEEL
 GREASE TYPE: CHEVRON SRI-2 POLYUREA GREASE
 NOT USABLE AT 200 VOLTS
 50 HZ DATA: 125 HP, 400V, 163 AMPS AT 1.0SF, 1480 RPM
 DMK, 06/04, UPDATED 2/2005
 INVERTER DUTY PER NEMA MG1 PART 31
 FOR VARIABLE TORQUE LOADS

Performance Characteristics

1st Winding 1st Connection

Design: 40AD1003A

Marks:

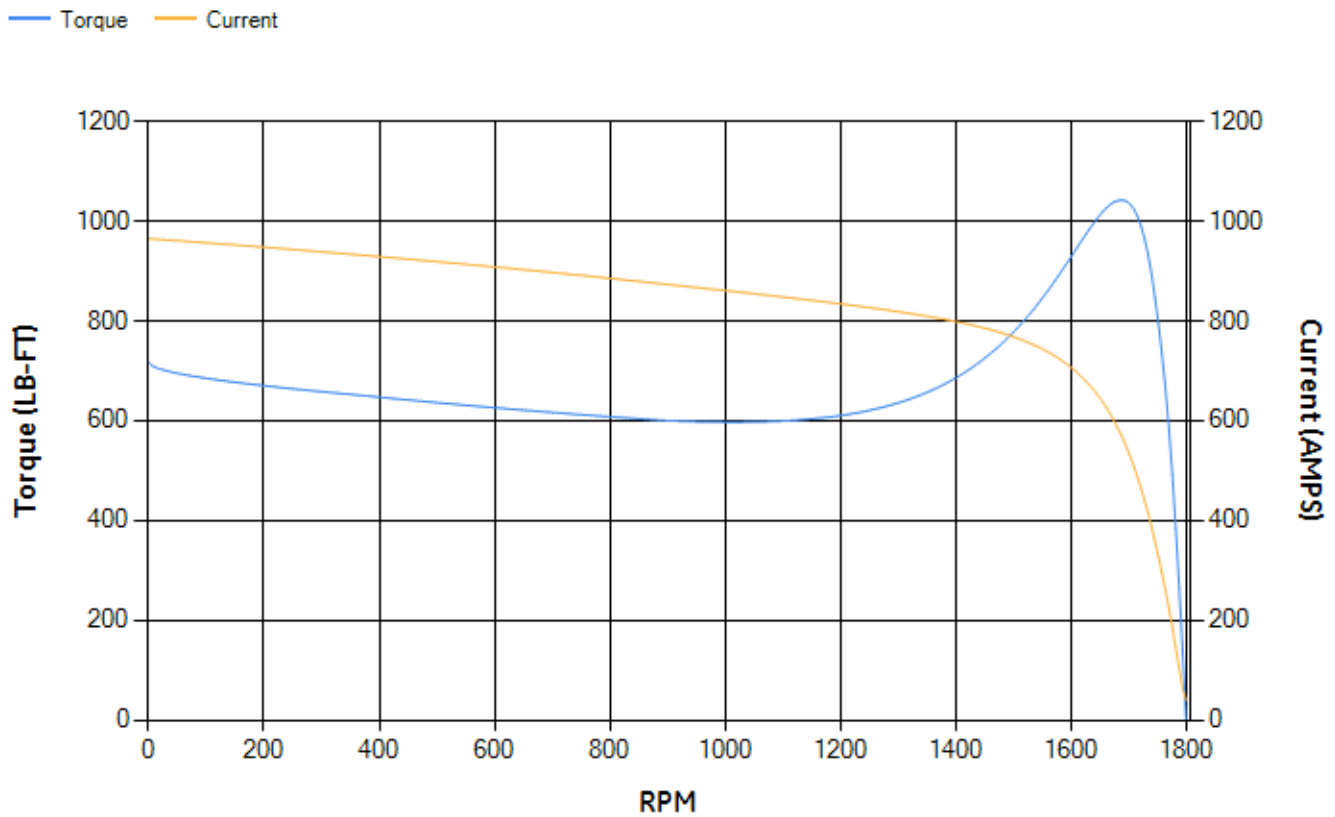
LOAD %	125.0	115.0	100.0	75.0	50.0	25.0	0.0
% EFF	95.53	95.74	96.2	96.24	96.03	94.19	0.00
% PF	88.66	88.64	88.24	86.07	79.67	60	3.91
AMPS	172.65	158.54	137.82	105.93	76.45	51.76	39.25

TORQ(FL)#FT	368	TORQ(LR)%FL	194.9	TORQ(BD)%FL	282.55
AMPS(LR)	964.83	PF AT START	0.33		

This motor is capable of two cold or one hot start with a maximum connected load inertia of 3104 Lb-Ft Sq (130.68 Kg-meter Sq)at 100% voltage, where the load torque varies with the square of the speed. Acceleration time with maximum inertia and the above load type is 33 seconds. Safe stall time at 100% voltage is 56 seconds cold, 40 seconds hot. Rotor inertia is 27.97 Lb-Ft Sq (1.18 Kg-meter Sq).

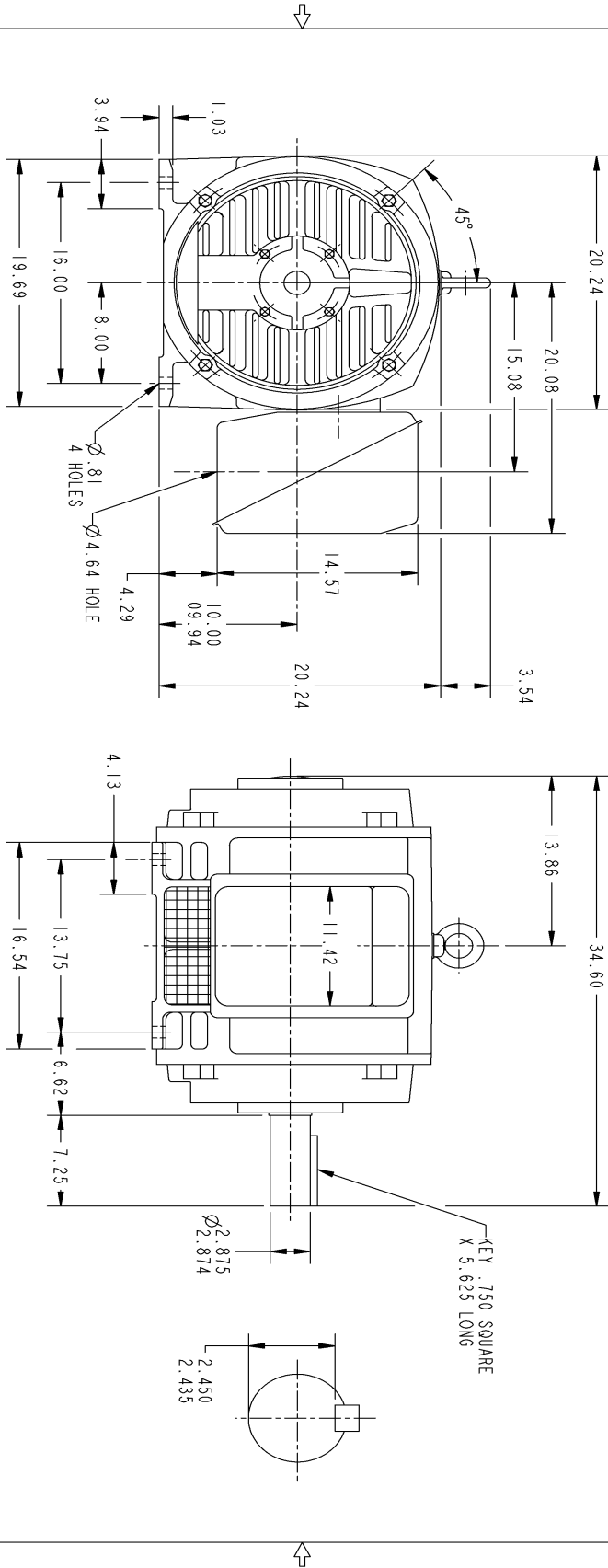
Open Circuit A-C:	0.995	Short Circuit D-C:	0.03
Short Circuit A-C:	0.037	X/R Ratio:	11.158
Stator Slots:	60	Rotor Slots:	50

Speed Torque Current Curve (First Connection, First Speed)

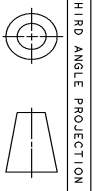


NAME:500903578 OBJECT:358B6203AC DATE:04-May-07 10:58:18

Marks:



- NOTES :
1. CONDUIT BOX MAY BE PLACED WITH THE ENTRANCE DOWN, UP OR ON EITHER SIDE.
 2. F-1 ASM AS SHOWN.
 3. F-2 ASM - HAS CONDUIT BOX ON OPPOSITE SIDE.



GE PROPRIETARY AND CONFIDENTIAL INFORMATION		REV	SHEET
<p>This document is the property of General Electric Company (GE) and contains proprietary information of GE. This document is loaned to the recipient condition that neither it nor the information contained therein shall be disclosed to any other person or organization without the express written approval of GE Industrial Systems. This document shall be returned to GE upon its request. This drawing is not to be used for reproduction or modification without the express written approval of GE Industrial Systems.</p>		1	1
REVISIONS			
REV.	DESCRIPTION	DATE	APPROVED
1	ISAAC 07-0770	05/02/07	R. KOHNE

APPLIED DIMENSIONS ARE IN INCHES	MODEL	SIGNATURES	DATE
<p>FOR ADDITIONAL INFO REFER TO:</p> <p>APPLIED DIMENSIONS ARE IN INCHES</p> <p>TOLERANCE ON: -</p> <p>1 PL DECIMALS ± . -</p> <p>2 PL DECIMALS ± . -</p> <p>3 PL DECIMALS ± . -</p> <p>ANGLES ± . -</p> <p>FRACTIONS ± . -</p> <p>FINISH</p>	<p>REVISED</p> <p>SOLID MODEL MODEL NAME</p>	<p>GENERAL ELECTRIC COMPANY</p> <p>Systems</p>	<p>12/12/02</p> <p>12/12/02</p> <p>12/12/02</p> <p>12/12/02</p>
<p>SCALE: DRAWING SCALE</p>		<p>REV 1</p>	

OUTLINE
405T - CAST IRON ODP FOOTED
358B6203AC

Marks:

Connection Diagram
GEM2034E-FIG8

