

Product Information Packet

November 8, 2016

Data shown is for the current revision model #. Ensure your nameplate model # matches.

Model Number:	5KS449LAA263A
Catalog Number:	M7680
Instruction Manual:	GEI-56128
Connection Diagram:	GEM2034E-FIG20
Outline Drawing:	239CC800AG

Accessory Connection Diagrams			
Bearing Thermocouple:	None	Heater:	None
RTD:	None	Thermistor:	None
Thermostat:	None	Winding Thermocouple:	None
Bearing RTD:	None		

Table of Contents	
Specification	01
Performance Characteristics	02
Outline Drawing	03
Connection Drawing(s)	04

Marks:

MODEL NUMBER:	5KS449LAA263A	Estimated Weight:	2910 Lbs
Outline Drawing:	239CC800AG	Time Rating:	CONT
Connection Diagram:	GEM2034E-FIG20	Enclosure:	TEFC
Instruction Book:	GEI-56128	Encl Construction:	SD
Design Code:	49BD1174B	Ambient Max(°C):	40
Type:	KS	Alt Ambient Max(°C):	--
Frame:	449T	Insulation Class:	F
Phases:	3	NEMA Design:	A
Poles:	4	Nominal Efficiency:	96.2 %
Output Power:	300HP 222KW	Guaranteed Efficiency:	95.4
RPM:	1795	3/4 Load Efficiency:	96.3
Voltage:	575	KVA Code:	J
Hertz:	60	Max KVAR:	102.8
Amps - FL:	280.0	Power Factor:	83.5
Service Factor:	1.15	Bearing - DE:	6318ZC3S0
Alt Service Factor:	--	Bearing - ODE:	6318ZC3S0

Enclosure is Totally Enclosed Fan-Cooled

Stamped Nameplate Notes:

FOR DIRECT COUPLED LOAD ONLY
 INVERTER DUTY PER NEMA MG1 PART 31
 ALTERNATE RATING FOR PWM CONTROL:
 1.0 SF VAR TORQUE RANGE 0-60 HZ

Additional Information:

4P - T EXTN - SPLIT LEAD
 1260 CU IN - 2(4.00" NPT)
 C/B GRD PLATE
 OIL RESISTANT SLEEVING ON LEADS
 F1 MOUNTING
 VIBRATION LIMIT 0.15 INCH PER SEC

Performance Characteristics

1st Winding 1st Connection

Design: 49BD1174B

Marks:

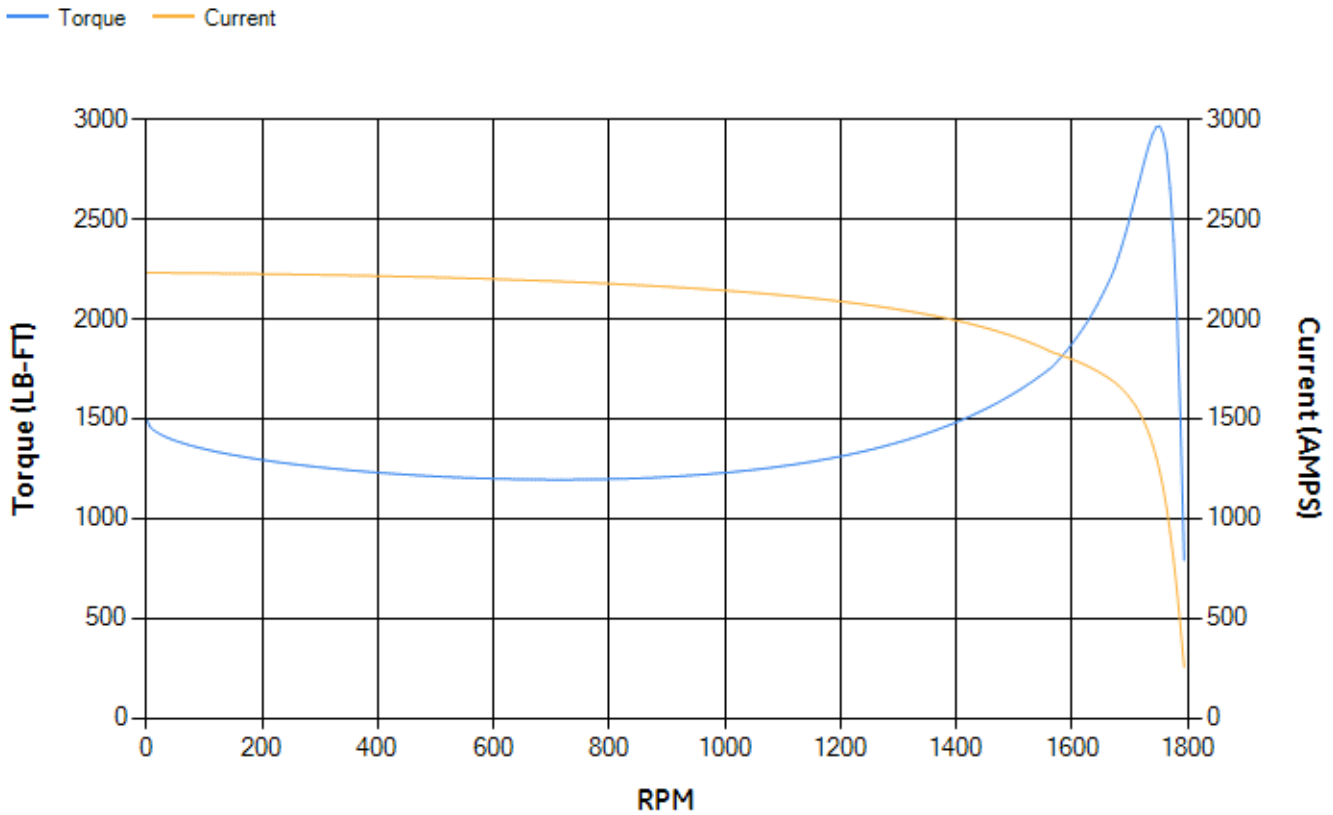
LOAD %	125.0	115.0	100.0	75.0	50.0	25.0	0.0
% EFF	95.97	96.09	96.42	96.25	95.77	93.41	0.00
% PF	86.09	85.38	83.78	78.9	68.43	45.44	3.01
AMPS	339.85	314.89	278.07	221.83	171.38	132.3	114.41

TORQ(FL)#FT	878.63	TORQ(LR)%FL	170.22	TORQ(BD)%FL	337.57
AMPS(LR)	2231.06	PF AT START	0.25		

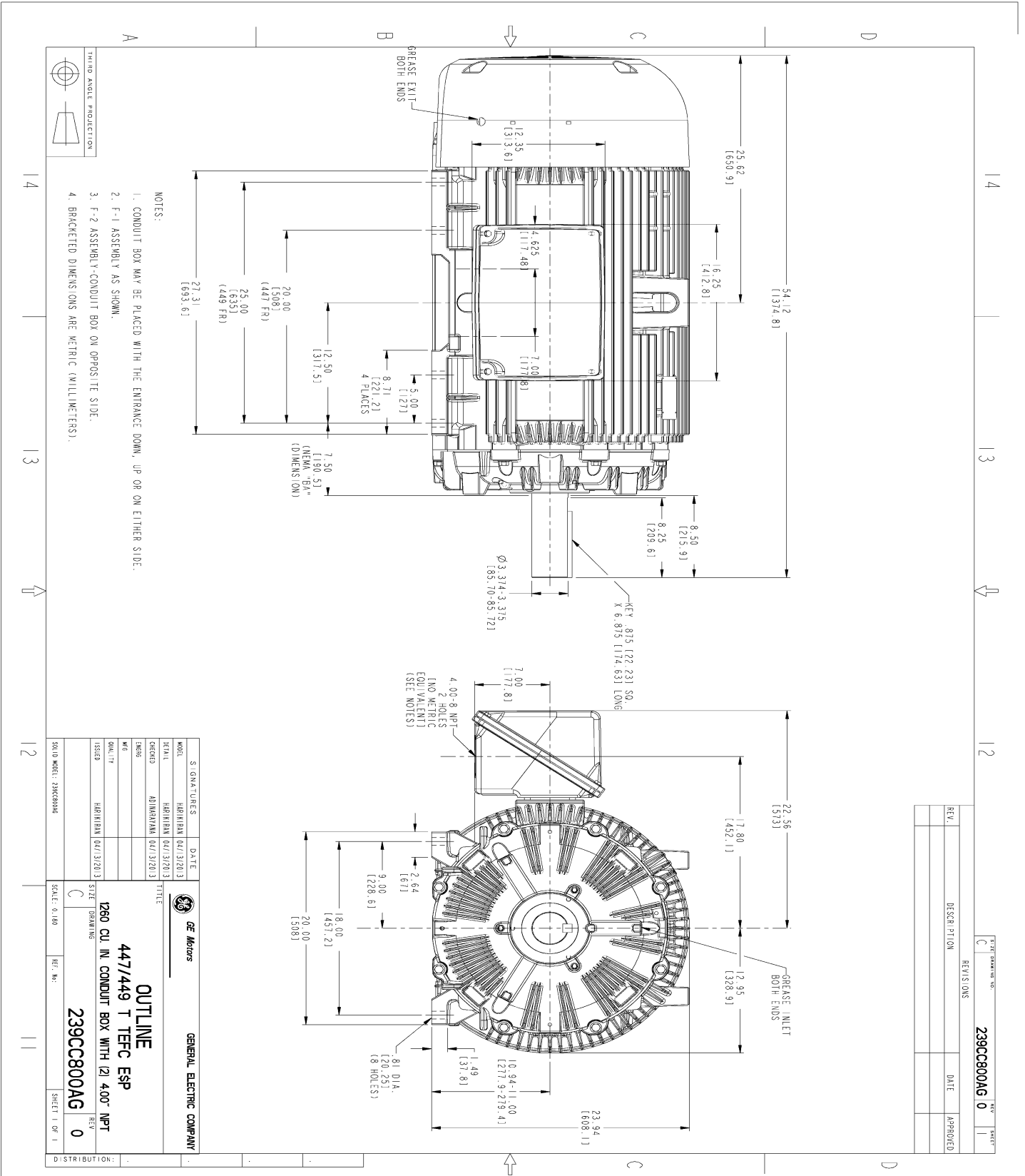
This motor is capable of two cold or one hot start with a maximum connected load inertia of 5593 Lb-Ft Sq (235.47 Kg-meter Sq)at 100% voltage, where the load torque varies with the square of the speed. Acceleration time with maximum inertia and the above load type is 30 seconds. Safe stall time at 100% voltage is 81 seconds cold, 45 seconds hot. Rotor inertia is 119.8 Lb-Ft Sq (5.04 Kg-meter Sq).

Open Circuit A-C:	1.465	Short Circuit D-C:	0.027
Short Circuit A-C:	0.068	X/R Ratio:	10.125
Stator Slots:	72	Rotor Slots:	58

Speed Torque Current Curve (First Connection, First Speed)

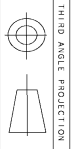


Marks:



NOTES:

1. CONDUIT BOX MAY BE PLACED WITH THE ENTRANCE DOWN, UP OR ON EITHER SIDE.
2. F-1 ASSEMBLY AS SHOWN.
3. F-2 ASSEMBLY CONDUIT BOX ON OPPOSITE SIDE.
4. BRACKETED DIMENSIONS ARE METRIC (MILLIMETERS).



THIRD ANGLE PROJECTION

REV.	DESCRIPTION	DATE	APPROVED

MODEL	SIGNATURES	DATE	<p>GENERAL ELECTRIC COMPANY</p> <p>OUTLINE</p> <p>447/449 T TEFC ESP</p> <p>1260 CU IN CONDUIT BOX WITH 121 400" NPT</p> <p>239CC800AG</p>
SCALE	HARRIMAN (04/13/2013)		
DESIGN	HARRIMAN (04/13/2013)		
ISSUED	HARRIMAN (04/13/2013)		
SCALE: 0.180	REV. NO.		
DISTRIBUTION:			

Marks:

Connection Diagram
GEM2034E-FIG20

