

Product Information Packet

November 8, 2016

Data shown is for the current revision model #. Ensure your nameplate model # matches.

Model Number:	5KS449LAA310B
Catalog Number:	M7157
Instruction Manual:	GEI-56128
Connection Diagram:	GEM2034E-FIG8
Outline Drawing:	239CC800AA

Accessory Connection Diagrams			
Bearing Thermocouple:	None	Heater:	None
RTD:	None	Thermistor:	None
Thermostat:	None	Winding Thermocouple:	None
Bearing RTD:	None		

Table of Contents	
Specification	01
Performance Characteristics	02
Outline Drawing	03
Connection Drawing(s)	04



Marks:

MODEL NUMBER:	5KS449LAA310B	Estimated Weight:	2840 Lbs
Outline Drawing:	239CC800AA	Time Rating:	CONT
Connection Diagram:	GEM2034E-FIG8	Enclosure:	TEFC
Instruction Book:	GEI-56128	Encl Construction:	SD
Design Code:	49BD3095A	Ambient Max(°C):	40
Type:	KS	Alt Ambient Max(°C):	--
Frame:	449T	Insulation Class:	F
Phases:	3	NEMA Design:	A
Poles:	6	Nominal Efficiency:	95.8 %
Output Power:	200HP 148KW	Guaranteed Efficiency:	95.0
RPM:	1190	3/4 Load Efficiency:	96.0
Voltage:	460	KVA Code:	H
Hertz:	60	Max KVAR:	62.5
Amps - FL:	233.0	Power Factor:	84.0
Service Factor:	1.15	Bearing - DE:	NU 318
Alt Service Factor:	--	Bearing - ODE:	6318ZC3S0

Enclosure is Totally Enclosed Fan-Cooled

Stamped Nameplate Notes:

ROLLER BEARING - FOR BELTED LOAD ONLY
 INVERTER DUTY PER NEMA MG1 PART 31
 ALTERNATE RATING FOR PWM CONTROL:1.0SF 40C AMBIENT
 VAR TORQUE RANGE 0-60 HZ

Additional Information:

6P - T EXTN - SPLIT LEAD
 700 CU IN - 3.00" NPT
 OIL RESISTANT SLEEVING ON LEADS
 B5F4C4 HIGH FATIGUE STEEL AISI 4142 SHAFT MATERIAL
 F1 MOUNTING
 VIBRATION LIMIT 0.0024 INCH PEAK TO PEAK

Performance Characteristics

1st Winding 1st Connection

Design: 49BD3095A

Marks:

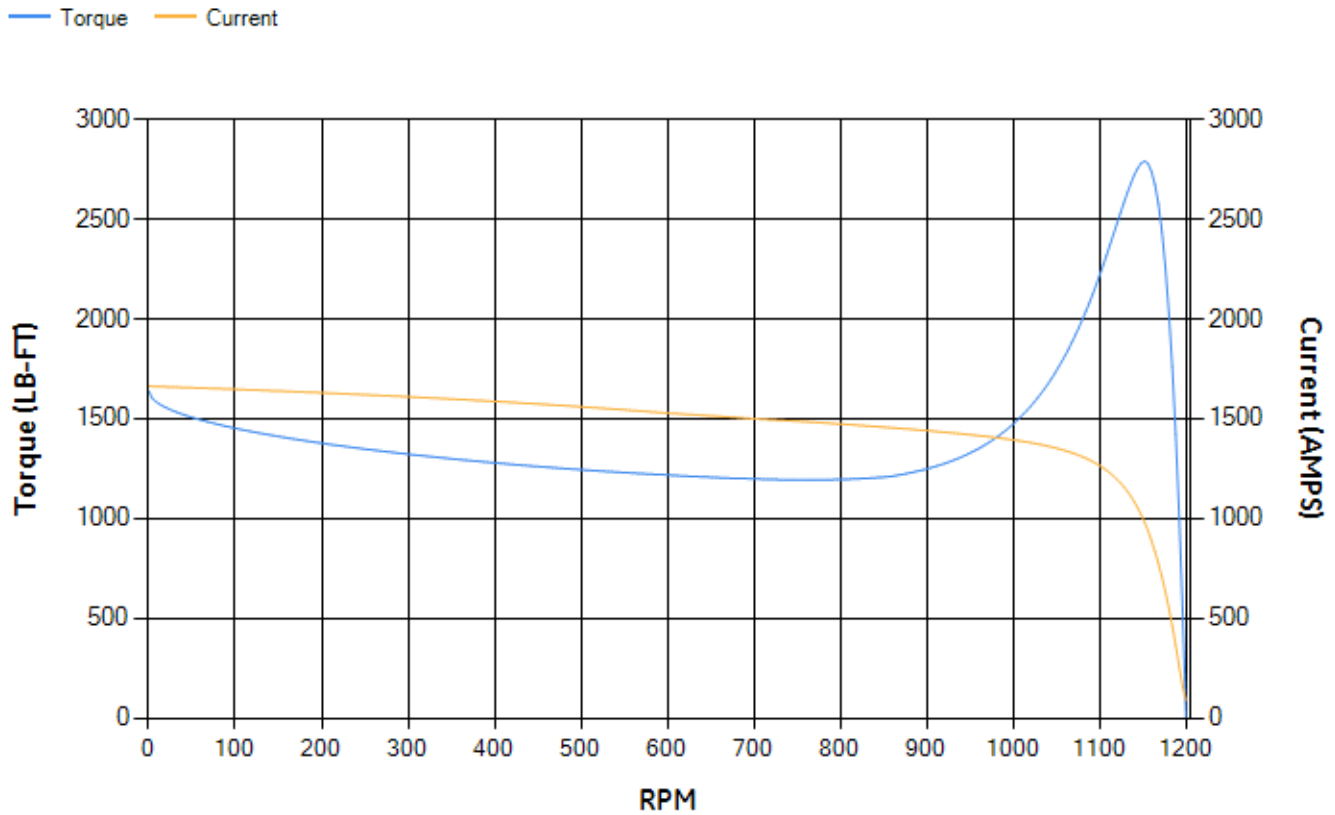
LOAD %	125.0	115.0	100.0	75.0	50.0	25.0	0.0
% EFF	95.26	95.48	95.96	96.05	95.88	94.04	0.00
% PF	85.97	85.5	84.3	80.2	70.73	48.21	2.82
AMPS	285.72	263.7	231.42	182.24	138.01	103.22	86.97

TORQ(FL)#FT	880.69	TORQ(LR)%FL	186.14	TORQ(BD)%FL	316.41
AMPS(LR)	1662.82	PF AT START	0.29		

This motor is capable of two cold or one hot start with a maximum connected load inertia of 11173 Lb-Ft Sq (470.38 Kg-meter Sq) at 100% voltage, where the load torque varies with the square of the speed. Acceleration time with maximum inertia and the above load type is 39 seconds. Safe stall time at 100% voltage is 102 seconds cold, 55 seconds hot. Rotor inertia is 162.4 Lb-Ft Sq (6.84 Kg-meter Sq).

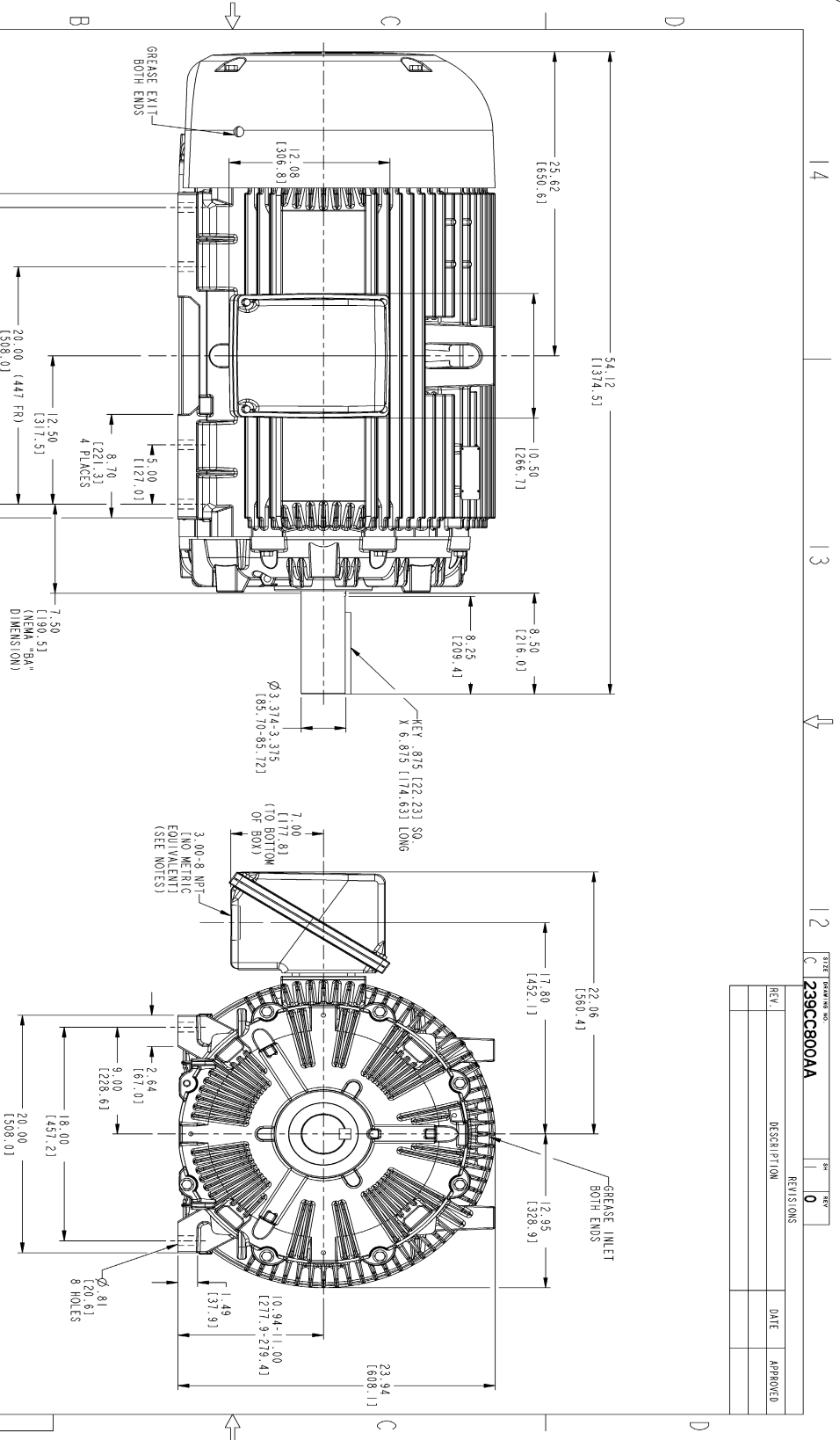
Open Circuit A-C:	1.052	Short Circuit D-C:	0.025
Short Circuit A-C:	0.05	X/R Ratio:	9.317
Stator Slots:	72	Rotor Slots:	58

Speed Torque Current Curve (First Connection, First Speed)



NAME:501352727 OBJECT:239CC800AA DATE:31-Jul-07 14:14:01

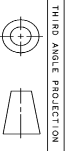
Marks:



- NOTES:
1. CONDUIT BOX MAY BE PLACED WITH THE ENTRANCE DOWN, UP OR ON EITHER SIDE.
 2. F-1 ASSEMBLY AS SHOWN.
 3. F-2 ASSEMBLY CONDUIT BOX ON OPPOSITE SIDE.
 4. BRACKETED DIMENSIONS ARE METRIC (MILLIMETERS).

REV.	DESCRIPTION	DATE	APPROVED

STANDARD NO.	REV.
239CC800AA	0



SIGNATURES	DATE	GE Industrial Systems GENERAL ELECTRIC COMPANY Fort Wayne, Indiana
DESIGNED	01/21/07	
DRAWN	01/21/07	
CHECKED	01/21/07	
ISSUED	01/21/07	OUTLINE 447/449 T TEFC ESP 700 CU. IN. CONDUIT BOX 239CC800AA
APPLIED PRACTICES		
SHEET NO.		REV.
		0

DISTRIBUTION: MMP

Marks:

Connection Diagram
GEM2034E-FIG8

