

Product Information Packet

November 9, 2016

Data shown is for the current revision model #. Ensure your nameplate model # matches.

Model Number:	5KS254STE205F2RG3
Catalog Number:	M7565
Instruction Manual:	GEI-M1031
Connection Diagram:	GEM2034E-FIG210
Outline Drawing:	358B6272AC

Accessory Connection Diagrams			
Bearing Thermocouple:	None	Heater:	None
RTD:	None	Thermistor:	None
Thermostat:	None	Winding Thermocouple:	None
Bearing RTD:	None		

Table of Contents	
Specification	01
Performance Characteristics	02
Outline Drawing	03
Connection Drawing(s)	04

Marks:

MODEL NUMBER:	5KS254STE205F2RG3	Estimated Weight:	312 Lbs
Outline Drawing:	358B6272AC	Time Rating:	CONT
Connection Diagram:	GEM2034E-FIG210	Enclosure:	TEFC
Instruction Book:	GEI-M1031	Encl Construction:	SD
Design Code:	25AD1014A	Ambient Max(°C):	40
Type:	KS	Alt Ambient Max(°C):	--
Frame:	254T	Insulation Class:	F
Phases:	3	NEMA Design:	A
Poles:	4	Nominal Efficiency:	92.4 %
Output Power:	15HP 11.1KW	Guaranteed Efficiency:	91.0
RPM:	1765	3/4 Load Efficiency:	93.0
Voltage:	230/460	KVA Code:	H
Hertz:	60	Max KVAR:	4.4
Amps - FL:	36/18	Power Factor:	84.5
Service Factor:	1.15	Bearing - DE:	6310ZZ
Alt Service Factor:	--	Bearing - ODE:	6208ZZ

Enclosure is Totally Enclosed Fan-Cooled

Stamped Nameplate Notes:

USABLE AT 200V @ 15 HP,40.6 AMPS @ 1.0 SF

LRA: 244.2/122.1

50HZ DATA: 10 HP,200/400V,32.2/16.1 AMPS @ 1.15 SF

50HZ DATA: 15 HP,200/400V,41.2/20.6 AMPS @ 1.00 SF

GREASE TYPE: SHELL ALVANIA R3 LITHIUM GREASE

Additional Information:

CONDUIT BOX VOLUME (CU IN): 100.5

CONDUIT BOX MATERIAL: CAST IRON

INVERTER DUTY PER NEMA MG1 PART 31

FOR VARIABLE TORQUE LOADS

BAM 1/12



Performance Characteristics

1st Winding 1st Connection

Design: 25AD1014A

Marks:

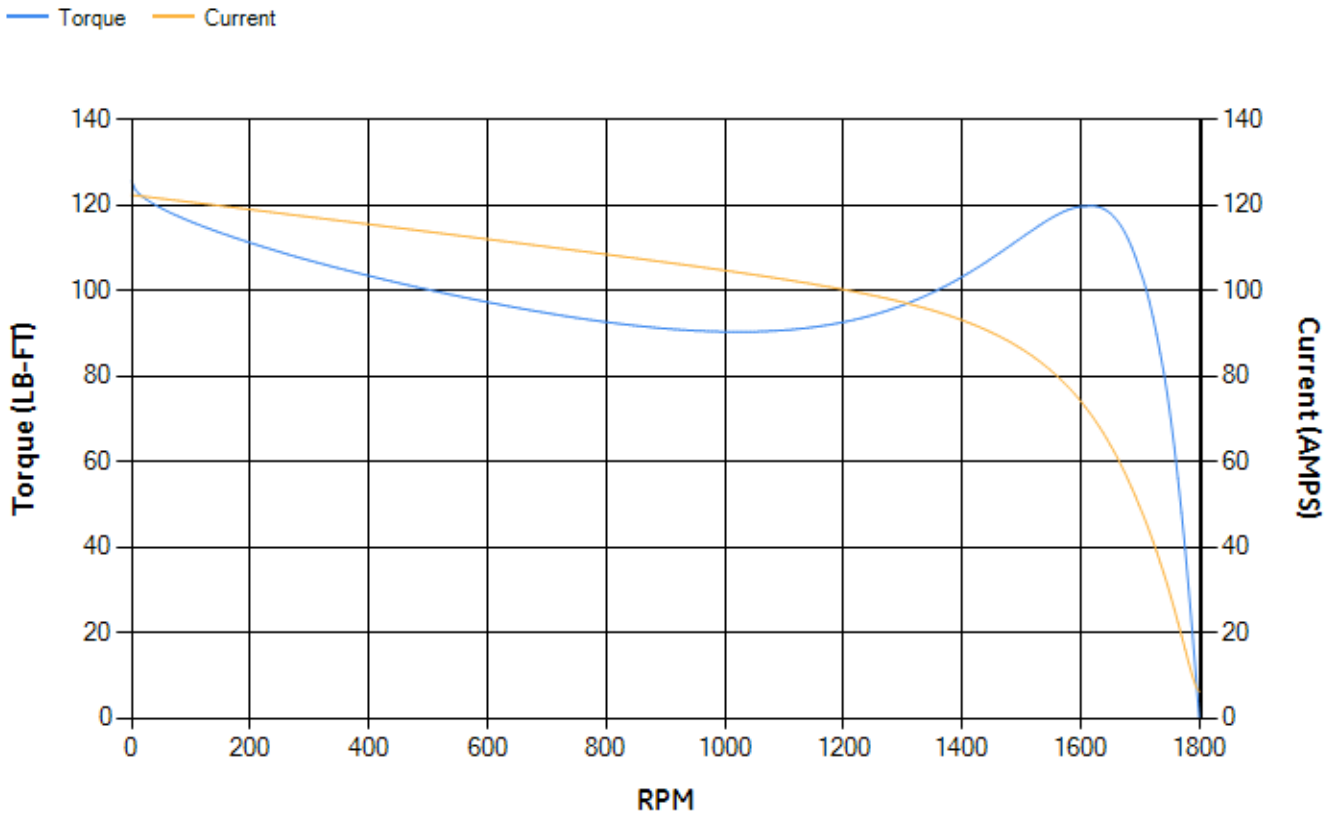
LOAD %	125.0	115.0	100.0	75.0	50.0	25.0	0.0
% EFF	91.7	92.1	92.79	93.02	92.56	89.09	0.00
% PF	85.65	85.42	84.6	81.28	73.03	52.16	6.08
AMPS	22.34	20.52	17.89	13.93	10.38	7.55	6.11

TORQ(FL)#FT	44.57	TORQ(LR)%FL	281.65	TORQ(BD)%FL	266.89
AMPS(LR)	122.3	PF AT START	0.44		

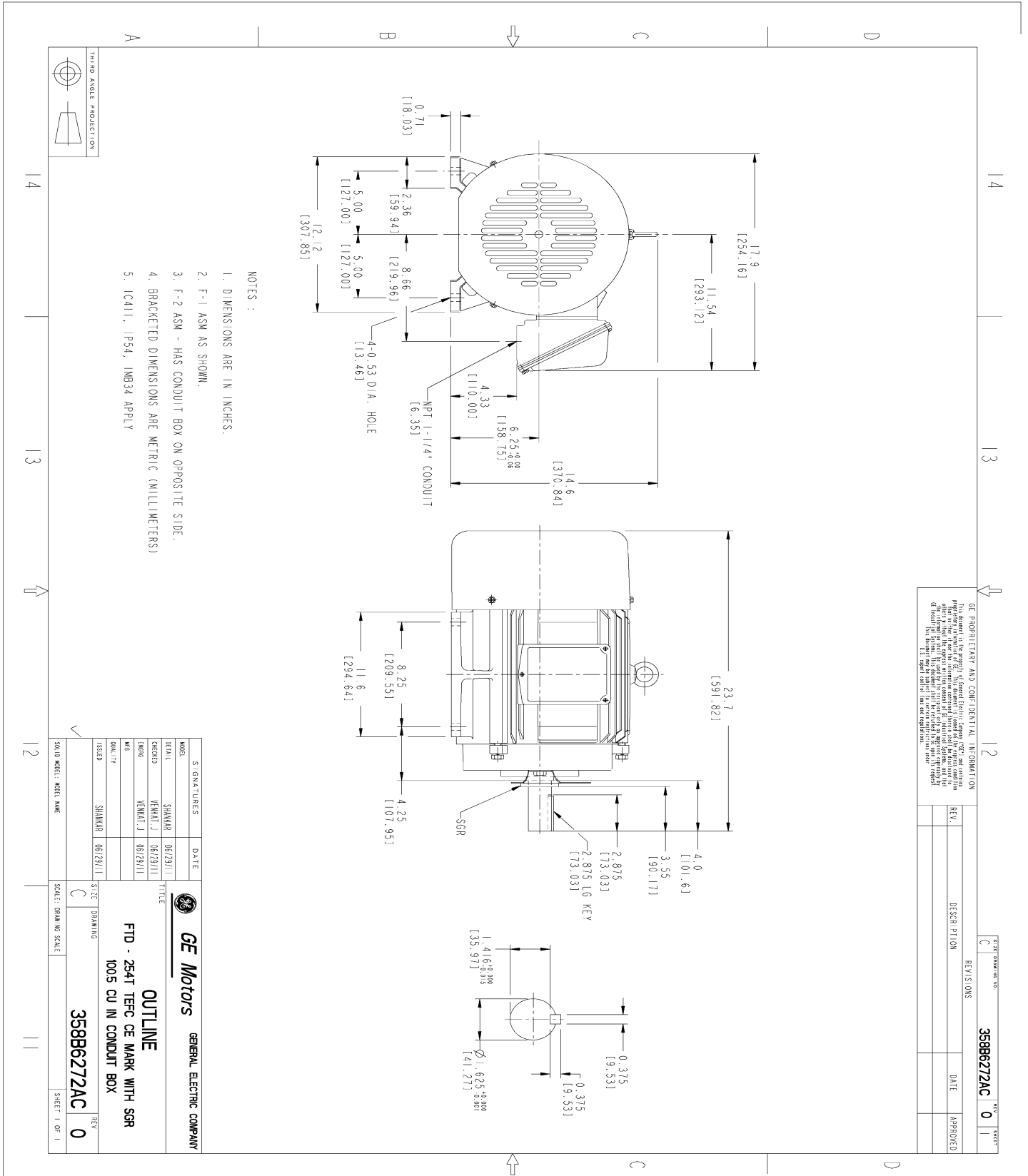
This motor is capable of two cold or one hot start with a maximum connected load inertia of 622 Lb-Ft Sq (26.19 Kg-meter Sq)at 100% voltage, where the load torque varies with the square of the speed. Acceleration time with maximum inertia and the above load type is 42 seconds. Safe stall time at 100% voltage is 71 seconds cold, 56 seconds hot. Rotor inertia is 2.02 Lb-Ft Sq (0.09 Kg-meter Sq).

Open Circuit A-C:	0.416	Short Circuit D-C:	0.016
Short Circuit A-C:	0.018	X/R Ratio:	5.974
Stator Slots:	48	Rotor Slots:	40

Speed Torque Current Curve (First Connection, First Speed)

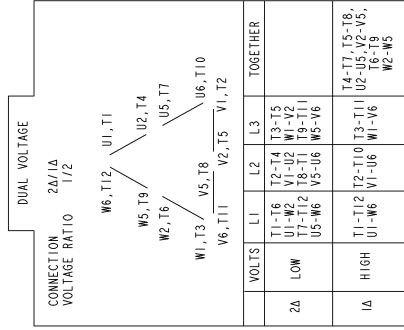


Marks:



Marks:

Connection Diagram
GEM2034E-FIG210



NAME:501452353 OBJECT:GEM2034E-FIG210 DATE:25-Feb-08 14:03:35

