

Product Information Packet

November 9, 2016

Data shown is for the current revision model #. Ensure your nameplate model # matches.

Model Number:	5KS404LAA304D
Catalog Number:	M7957
Instruction Manual:	GEI-56128
Connection Diagram:	GEM2034E-FIG1
Outline Drawing:	239CC400AA

Accessory Connection Diagrams			
Bearing Thermocouple:	None	Heater:	None
RTD:	None	Thermistor:	None
Thermostat:	None	Winding Thermocouple:	None
Bearing RTD:	None		

Table of Contents	
Specification	01
Performance Characteristics	02
Outline Drawing	03
Connection Drawing(s)	04

Marks:

MODEL NUMBER:	5KS404LAA304D	Estimated Weight:	1410 Lbs
Outline Drawing:	239CC400AA	Time Rating:	CONT
Connection Diagram:	GEM2034E-FIG1	Enclosure:	TEFC
Instruction Book:	GEI-56128	Encl Construction:	SD
Design Code:	40BD3051B	Ambient Max(°C):	40
Type:	KS	Alt Ambient Max(°C):	--
Frame:	404T	Insulation Class:	F
Phases:	3	NEMA Design:	A
Poles:	6	Nominal Efficiency:	94.5 %
Output Power:	60HP 44.4KW	Guaranteed Efficiency:	93.6
RPM:	1190	3/4 Load Efficiency:	94.5
Voltage:	575	KVA Code:	G
Hertz:	60	Max KVAR:	23.8
Amps - FL:	59.4	Power Factor:	80.0
Service Factor:	1.15	Bearing - DE:	6316ZC3S0
Alt Service Factor:	--	Bearing - ODE:	6316ZC3S0

Enclosure is Totally Enclosed Fan-Cooled

Stamped Nameplate Notes:

INVERTER DUTY PER NEMA MG1 PART 31
 ALTERNATE RATING FOR PWM CONTROL:1.0SF 40C AMBIENT
 VAR TORQUE RANGE 0-60 HZ

Additional Information:

6P - T EXTN
 700 CU IN - 3.00" NPT
 OIL RESISTANT SLEEVING ON LEADS
 F1 MOUNTING
 VIBRATION LIMIT 0.15 INCH PER SEC

Performance Characteristics

1st Winding 1st Connection

Design: 40BD3051B

Marks:

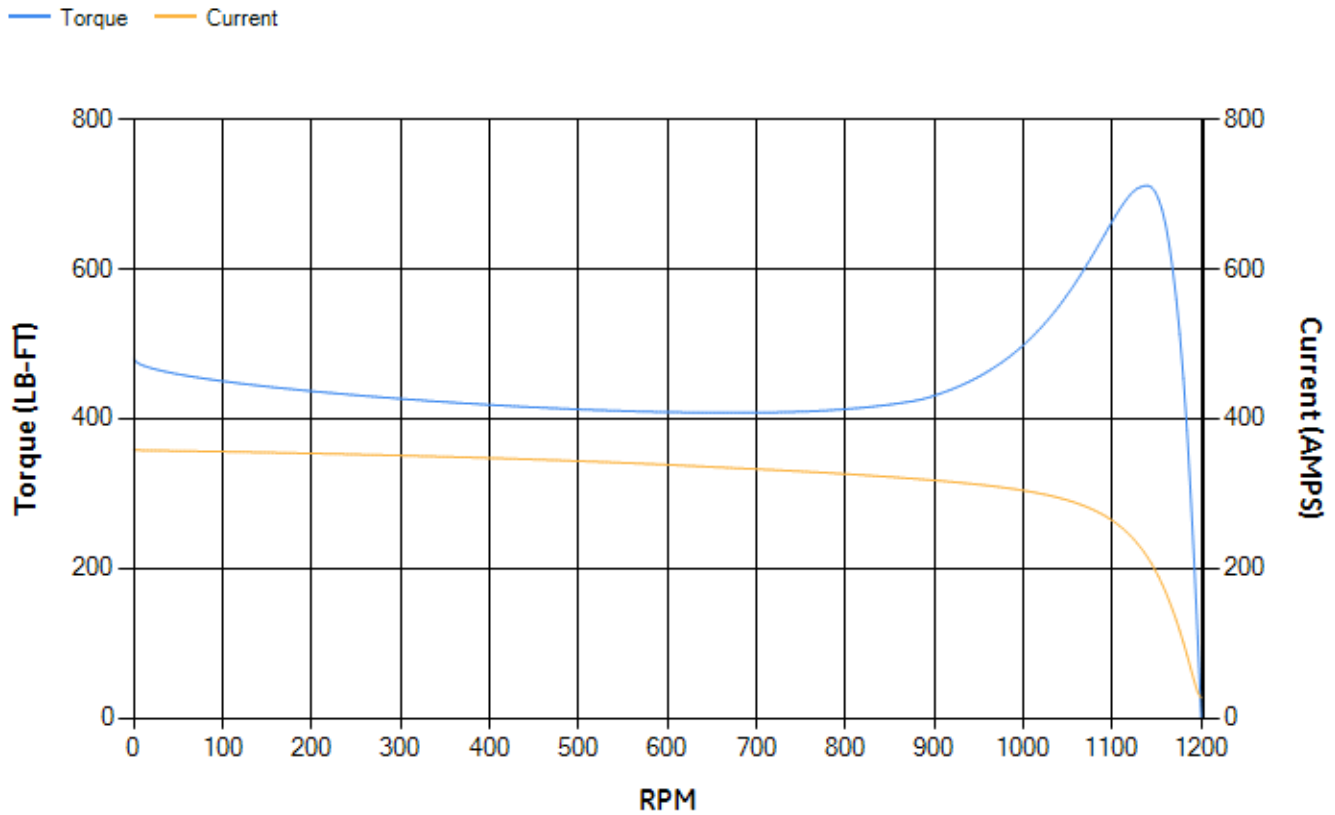
LOAD %	125.0	115.0	100.0	75.0	50.0	25.0	0.0
% EFF	93.87	94.1	94.56	94.51	93.93	90.74	0.00
% PF	82.64	81.88	80.12	74.74	63.62	41.21	3.57
AMPS	72.38	67.06	59.17	47.7	37.59	30.03	26.49

TORQ(FL)#FT	264.83	TORQ(LR)%FL	181.48	TORQ(BD)%FL	267.65
AMPS(LR)	357.92	PF AT START	0.35		

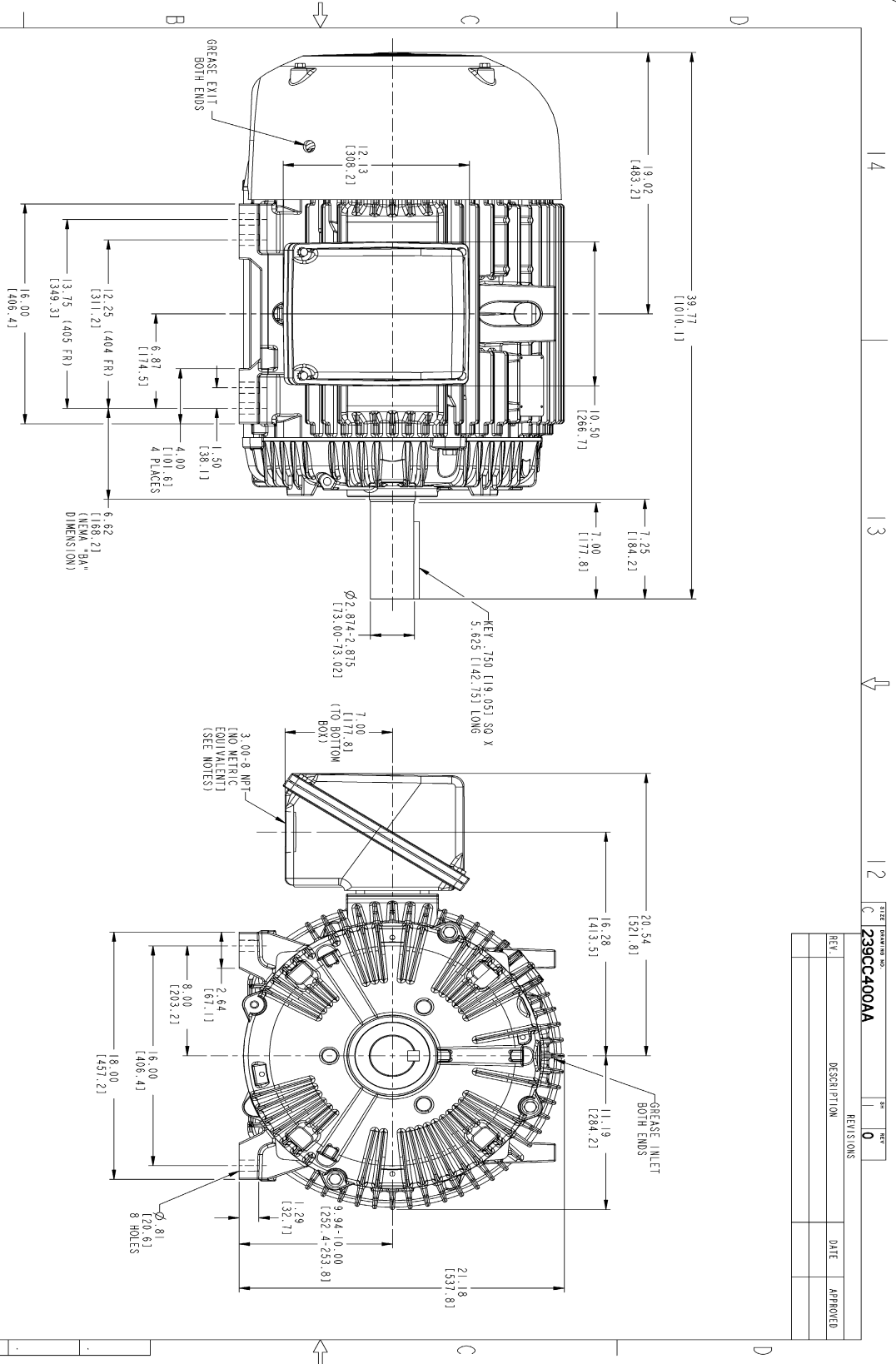
This motor is capable of two cold or one hot start with a maximum connected load inertia of 5104 Lb-Ft Sq (214.88 Kg-meter Sq)at 100% voltage, where the load torque varies with the square of the speed. Acceleration time with maximum inertia and the above load type is 55 seconds. Safe stall time at 100% voltage is 120 seconds cold, 75 seconds hot. Rotor inertia is 28.57 Lb-Ft Sq (1.2 Kg-meter Sq).

Open Circuit A-C:	0.629	Short Circuit D-C:	0.02
Short Circuit A-C:	0.04	X/R Ratio:	7.72
Stator Slots:	72	Rotor Slots:	58

Speed Torque Current Curve (First Connection, First Speed)

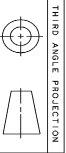


Marks:



NOTES:

1. CONDUIT BOX MAY BE PLACED WITH THE ENTRANCE DOWN, UP OR ON EITHER SIDE.
2. F-1 ASSEMBLY AS SHOWN.
3. F-2 ASSEMBLY CONDUIT BOX ON OPPOSITE SIDE.
4. BRACKETED DIMENSIONS ARE METRIC (MILLIMETERS).



REV.	DESCRIPTION	DATE	APPROVED

REV.	DESCRIPTION	DATE	APPROVED

SIGNATURES	DATE	GE Industrial Systems	GENERAL ELECTRIC COMPANY
DESIGNED BY: SAJAN 01/21/07	01/21/07		Fort Wayne, Indiana
DRAWN BY: SAJAN 01/21/07	01/21/07		
APPLIED PRACTICES			
SIZING			
SCALE: 0.220	REF. NO.:		
SHEET 1 OF 1			

OUTLINE
404/405 T TEFC ESP
700 CU. IN. CONDUIT BOX
239CC400AA

DISTRIBUTION: MMP

Marks:

Connection Diagram
GEM2034E-FIG1

