

# Product Information Packet

November 8, 2016

Data shown is for the current revision model #. Ensure your nameplate model # matches.

<b>Model Number:</b>	<b>5KS444LAA333B</b>
<b>Catalog Number:</b>	<b>M7692</b>
<b>Instruction Manual:</b>	GEI-56128
<b>Connection Diagram:</b>	GEM2034E-FIG7
<b>Outline Drawing:</b>	239CC600AA

<b>Accessory Connection Diagrams</b>			
<b>Bearing Thermocouple:</b>	None	<b>Heater:</b>	None
<b>RTD:</b>	None	<b>Thermistor:</b>	None
<b>Thermostat:</b>	None	<b>Winding Thermocouple:</b>	None
<b>Bearing RTD:</b>	None		

<b>Table of Contents</b>	
Specification	01
Performance Characteristics	02
Outline Drawing	03
Connection Drawing(s)	04

**Marks:**

<b>MODEL NUMBER:</b>	<b>5KS444LAA333B</b>	<b>Estimated Weight:</b>	1850 Lbs
<b>Outline Drawing:</b>	239CC600AA	<b>Time Rating:</b>	CONT
<b>Connection Diagram:</b>	GEM2034E-FIG7	<b>Enclosure:</b>	TEFC
<b>Instruction Book:</b>	GEI-56128	<b>Encl Construction:</b>	SD
<b>Design Code:</b>	44BD3070A	<b>Ambient Max(°C):</b>	40
<b>Type:</b>	KS	<b>Alt Ambient Max(°C):</b>	--
<b>Frame:</b>	444T	<b>Insulation Class:</b>	F
<b>Phases:</b>	3	<b>NEMA Design:</b>	A
<b>Poles:</b>	6	<b>Nominal Efficiency:</b>	95.0 %
<b>Output Power:</b>	100HP 74KW	<b>Guaranteed Efficiency:</b>	94.1
<b>RPM:</b>	1190	<b>3/4 Load Efficiency:</b>	95.0
<b>Voltage:</b>	460	<b>KVA Code:</b>	H
<b>Hertz:</b>	60	<b>Max KVAR:</b>	36.3
<b>Amps - FL:</b>	121.0	<b>Power Factor:</b>	81.5
<b>Service Factor:</b>	1.15	<b>Bearing - DE:</b>	NU 318
<b>Alt Service Factor:</b>	--	<b>Bearing - ODE:</b>	6318ZC3S0

**Enclosure is Totally Enclosed Fan-Cooled**

---

**Stamped Nameplate Notes:**

ROLLER BEARING - FOR BELTED LOAD ONLY  
 INVERTER DUTY PER NEMA MG1 PART 31  
 ALTERNATE RATING FOR PWM CONTROL:1.0SF 40C AMBIENT  
 VAR TORQUE RANGE 0-60 HZ

**Additional Information:**

6P - T EXTN  
 700 CU IN - 3.00" NPT  
 OIL RESISTANT SLEEVING ON LEADS  
 B5F4C4 HIGH FATIGUE STEEL AISI 4142 SHAFT MATERIAL  
 F1 MOUNTING  
 VIBRATION LIMIT 0.0024 INCH PEAK TO PEAK

**Performance Characteristics**

1st Winding 1st Connection

**Design: 44BD3070A**

**Marks:**

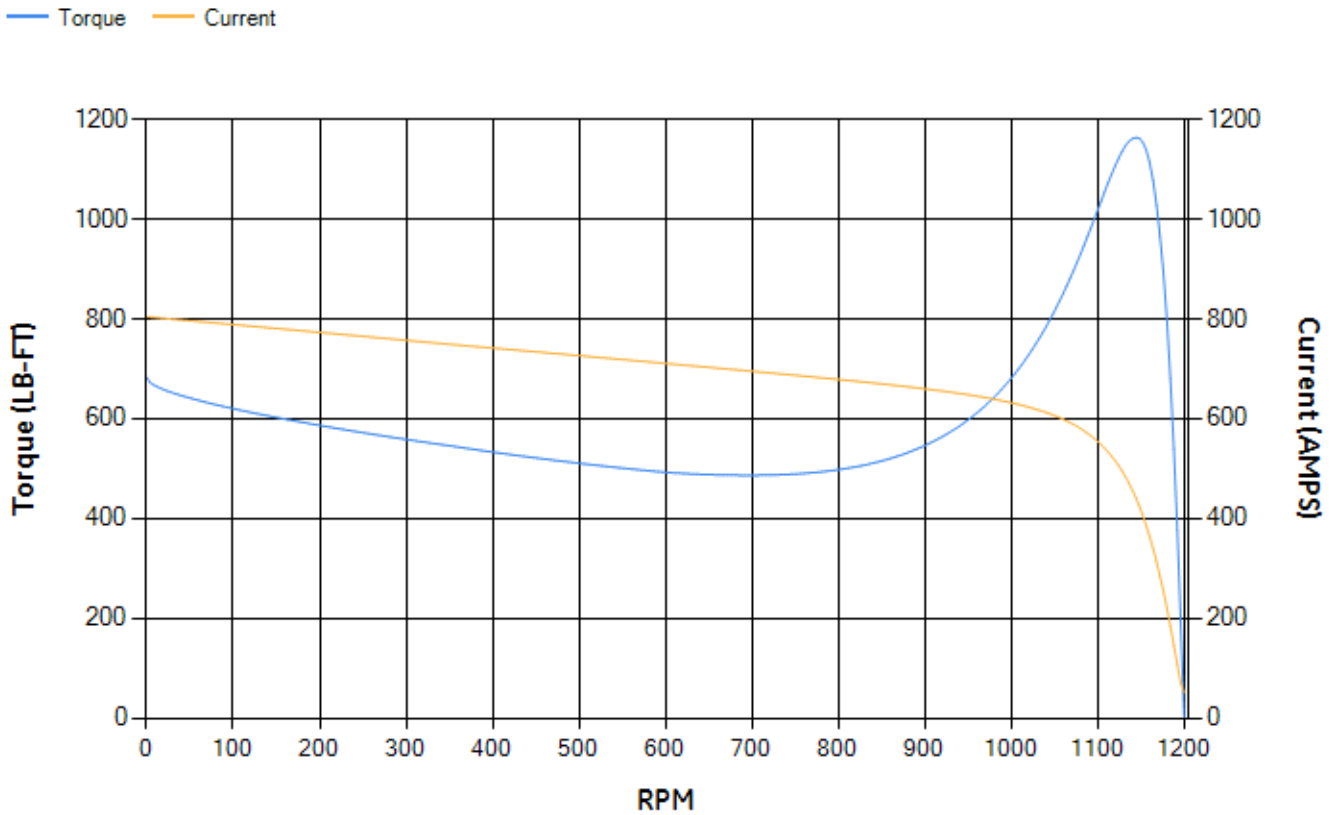
LOAD %	125.0	115.0	100.0	75.0	50.0	25.0	0.0
% EFF	94.38	94.59	95.04	94.98	94.46	91.55	0.00
% PF	83.64	83.04	81.58	76.81	66.42	44.01	3.69
AMPS	148.22	137.03	120.72	96.21	74.59	58.08	50.49

<b>TORQ(FL)#FT</b>	441.2	<b>TORQ(LR)%FL</b>	154.66	<b>TORQ(BD)%FL</b>	263.08
<b>AMPS(LR)</b>	804.08	<b>PF AT START</b>	0.31		

This motor is capable of two cold or one hot start with a maximum connected load inertia of 4218 Lb-Ft Sq (177.58 Kg-meter Sq)at 100% voltage, where the load torque varies with the square of the speed. Acceleration time with maximum inertia and the above load type is 36 seconds. Safe stall time at 100% voltage is 73 seconds cold, 43 seconds hot. Rotor inertia is 73.82 Lb-Ft Sq (3.11 Kg-meter Sq).

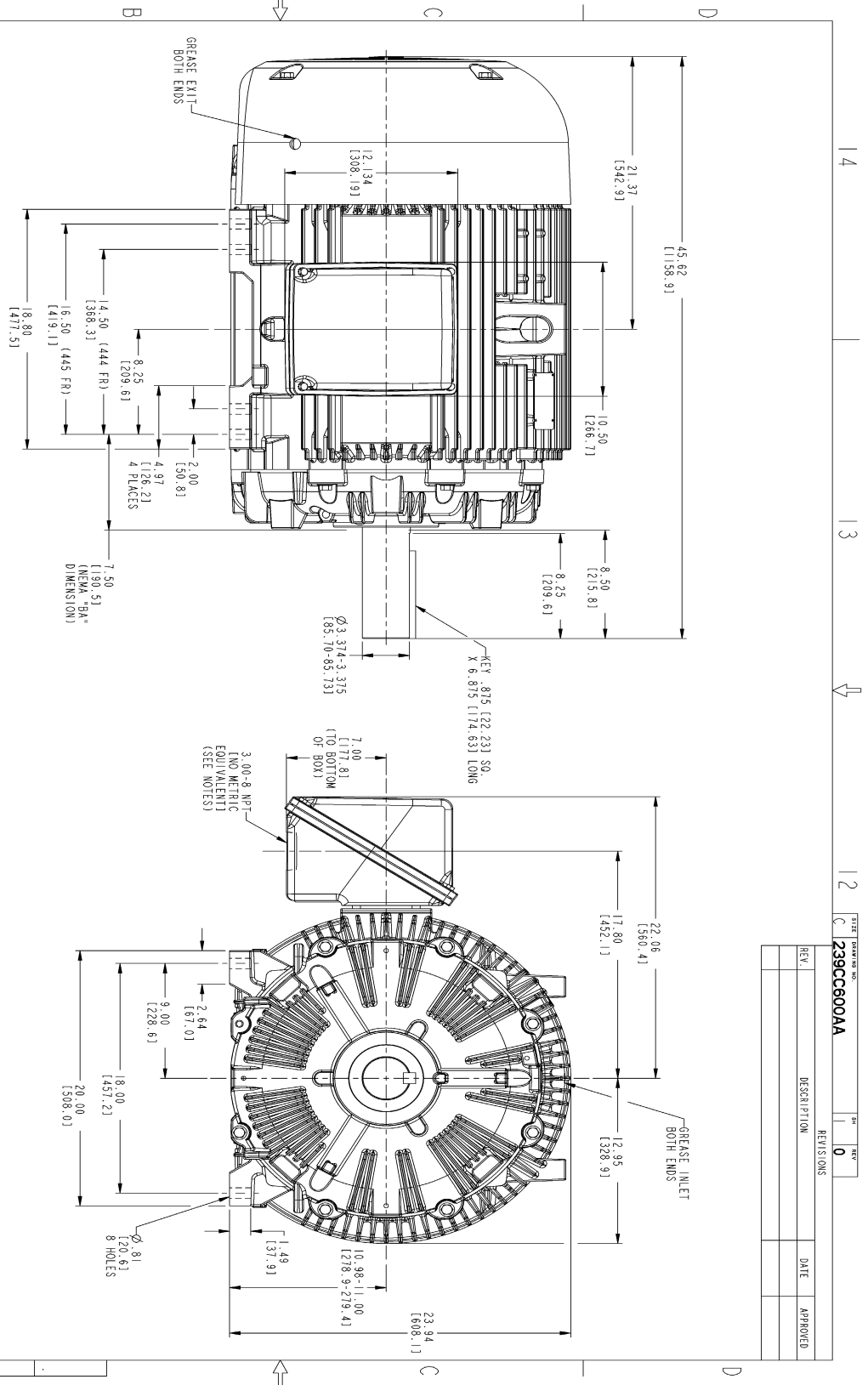
<b>Open Circuit A-C:</b>	0.716	<b>Short Circuit D-C:</b>	0.027
<b>Short Circuit A-C:</b>	0.048	<b>X/R Ratio:</b>	10.088
<b>Stator Slots:</b>	72	<b>Rotor Slots:</b>	58

**Speed Torque Current Curve (First Connection, First Speed)**

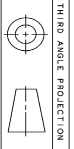


NAME:501352727 OBJECT:239CC600AA DATE:31-Jul-07 13:50:49

Marks:



- NOTES:
1. CONDUIT BOX MAY BE PLACED WITH THE ENTRANCE DOWN, UP OR ON EITHER I
  2. F-1 ASSEMBLY AS SHOWN.
  3. F-2 ASSEMBLY CONDUIT BOX ON OPPOSITE SIDE.
  4. BRACKETED DIMENSIONS ARE METRIC (MILLIMETERS).



REV.	DESCRIPTION	DATE	APPROVED

SIGNATURES	DATE	 <b>GE Industrial Systems</b> GENERAL ELECTRIC COMPANY Fort Wayne, Indiana
DRAWN	01/21/07	
CHECKED	01/21/07	
ISSUED	01/21/07	OUTLINE 444/445 T TEFC ESP 700 CU. IN. CONDUIT BOX 239CC600AA
APPLIED PRACTICES		
SCALE: 0.200	REF. NO:	SHEET 1 OF 1

DISTRIBUTION: MMP

Marks:

**Connection Diagram**  
**GEM2034E-FIG7**

