

Product Information Packet

November 7, 2016

Data shown is for the current revision model #. Ensure your nameplate model # matches.

Model Number:	5KS364ATE215A
Catalog Number:	E7383
Instruction Manual:	GEI-M1023
Connection Diagram:	GEM2034E-FIG10
Outline Drawing:	358B6219AC

Accessory Connection Diagrams			
Bearing Thermocouple:	None	Heater:	None
RTD:	None	Thermistor:	None
Thermostat:	None	Winding Thermocouple:	None
Bearing RTD:	None		

Table of Contents	
Specification	01
Performance Characteristics	02
Outline Drawing	03
Connection Drawing(s)	04

Marks:

MODEL NUMBER:	5KS364ATE215A	Estimated Weight:	750 Lbs
Outline Drawing:	358B6219AC	Time Rating:	CONT
Connection Diagram:	GEM2034E-FIG10	Enclosure:	DP
Instruction Book:	GEI-M1023	Encl Construction:	OPEN
Design Code:	36AD1005A	Ambient Max(°C):	40
Type:	KS	Alt Ambient Max(°C):	--
Frame:	364TS	Insulation Class:	F
Phases:	3	NEMA Design:	A
Poles:	4	Nominal Efficiency:	95.0 %
Output Power:	60HP 44.4KW	Guaranteed Efficiency:	94.1
RPM:	1785	3/4 Load Efficiency:	94.7
Voltage:	230/460	KVA Code:	J
Hertz:	60	Max KVAR:	23.7
Amps - FL:	150.6/75.3	Power Factor:	78.5
Service Factor:	1.15	Bearing - DE:	6314
Alt Service Factor:	--	Bearing - ODE:	6313

Enclosure is Dripproof

Stamped Nameplate Notes:**Additional Information:**

4 POLE DP
 LRA: 1124/562
 NO. OF MOTOR LEADS: 12
 CONDUIT BOX VOLUME (IN³): 550
 CONDUIT BOX MTL: STAMPED STEEL
 GREASE TYPE: CHEVRON SRI-2 POLYUREA GREASE
 USABLE AT 200V @ 60HP, 162 AMPS @ 1.0 SF
 50 HZ DATA: 60HP, 200/400V, 175.4/87.7 AMPS AT 1.0SF, 1480 RPM
 DMK, 06/04, DATA UPDATE 12/2004
 INVERTER DUTY PER NEMA MG1 PART 31
 FOR VARIABLE TORQUE LOADS

Performance Characteristics

1st Winding 1st Connection

Design: 36AD1005A

Marks:

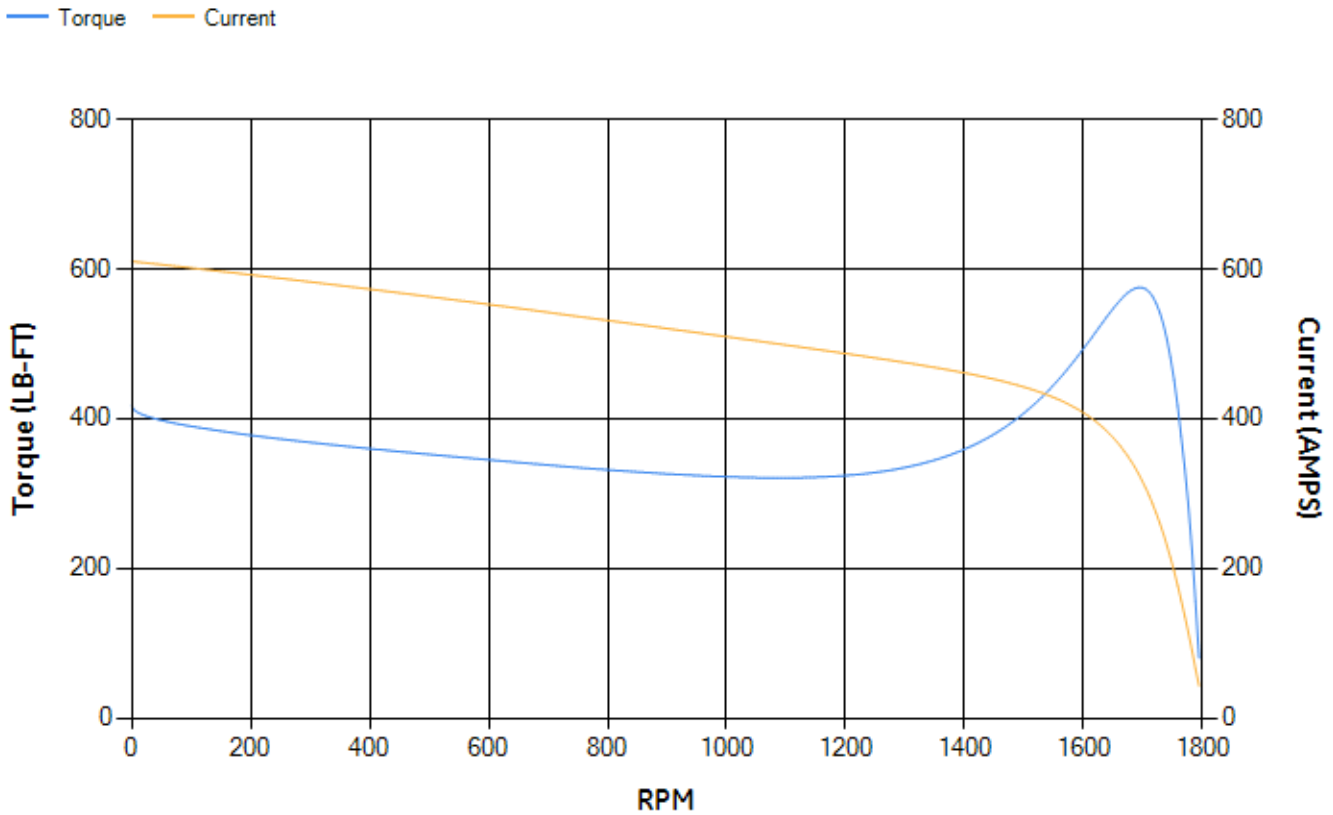
LOAD %	125.0	115.0	100.0	75.0	50.0	25.0	0.0
% EFF	94.65	94.77	95.07	94.73	93.8	90	0.00
% PF	82.94	82.37	80.95	76.31	66.21	44.43	4.7
AMPS	89.42	82.73	72.97	58.26	45.21	35.11	30.23

TORQ(FL)#FT	176.6	TORQ(LR)%FL	236.1	TORQ(BD)%FL	325.15
AMPS(LR)	610.28	PF AT START	0.3		

This motor is capable of two cold or one hot start with a maximum connected load inertia of 1561 Lb-Ft Sq (65.72 Kg-meter Sq)at 100% voltage, where the load torque varies with the square of the speed. Acceleration time with maximum inertia and the above load type is 29 seconds. Safe stall time at 100% voltage is 50 seconds cold, 41 seconds hot. Rotor inertia is 12.38 Lb-Ft Sq (0.52 Kg-meter Sq).

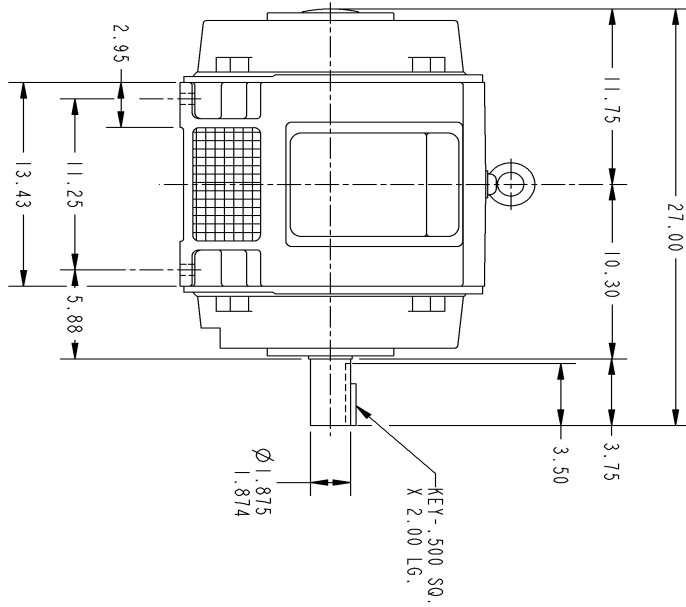
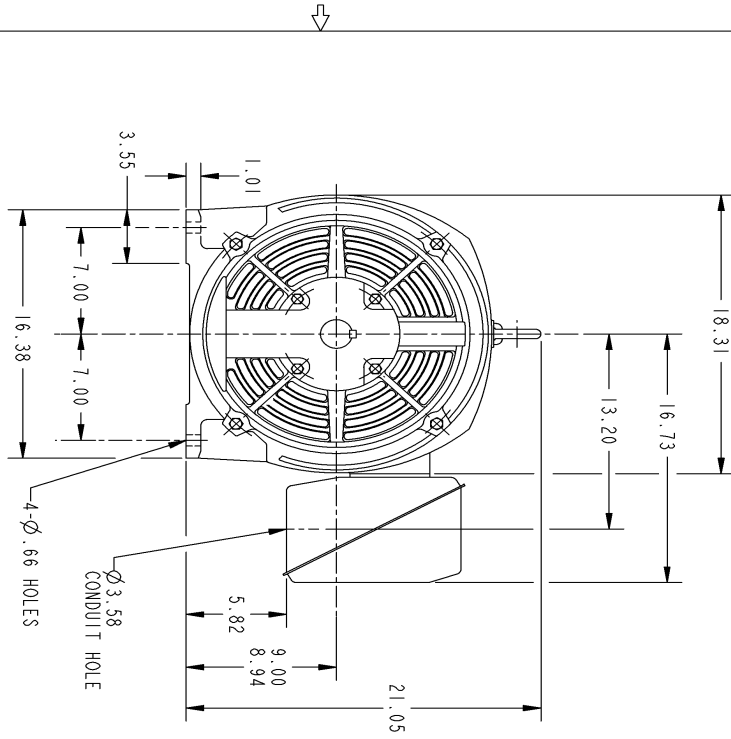
Open Circuit A-C:	0.667	Short Circuit D-C:	0.029
Short Circuit A-C:	0.033	X/R Ratio:	11.094
Stator Slots:	48	Rotor Slots:	40

Speed Torque Current Curve (First Connection, First Speed)



NAME:501053131 OBJECT:358B6219AC DATE:02-May-07 09:17:49

Marks:

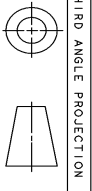


SIZE: 358B6219AC
 GE PROPRIETARY INNOVATION

REV.	DESCRIPTION	DATE	APPROVED
1	ISAAC 07-0770	04/27/07	RHONDA

NOTES :

1. CONDUIT BOX MAY BE PLACED WITH THE ENTRANCE DOWN, UP OR ON EITHER SIDE.
2. F-1 ASW AS SHOWN.
3. F-2 ASW - HAS CONDUIT BOX ON OPPOSITE SIDE.



UNLESS OTHERWISE SPECIFIED: DIMENSIONS ARE IN INCHES	SIGNATURES	DATE	<p>GENERAL ELECTRIC COMPANY Fort Wayne, Indiana</p>
TOLERANCE ON: 2 PL. DECIMALS ± .01 3 PL. DECIMALS ± .005 ANGLES ± 1°	DRAWN PRABHAKAR 03/27/03	03/27/03	
CHECKED ENBR	PRABHAKAR 03/27/03	03/27/03	
MATERIAL:	APPLIED PRACTICES	SIZE DRAWING B	<p>364TS - OPEN DRIP PROOF</p> <p>358B6219AC</p> <p>SCALE: DRAWING SCALE</p> <p>SHEET 1 OF 1</p>

DISTRIBUTION:

Marks:

Connection Diagram
GEM2034E-FIG10

