

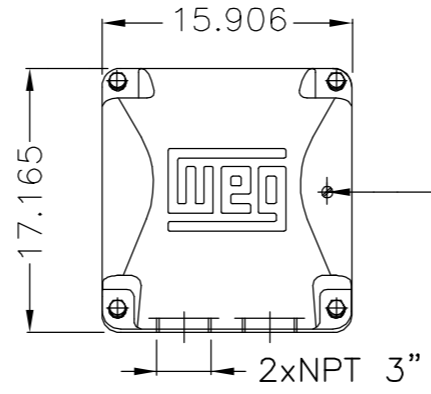
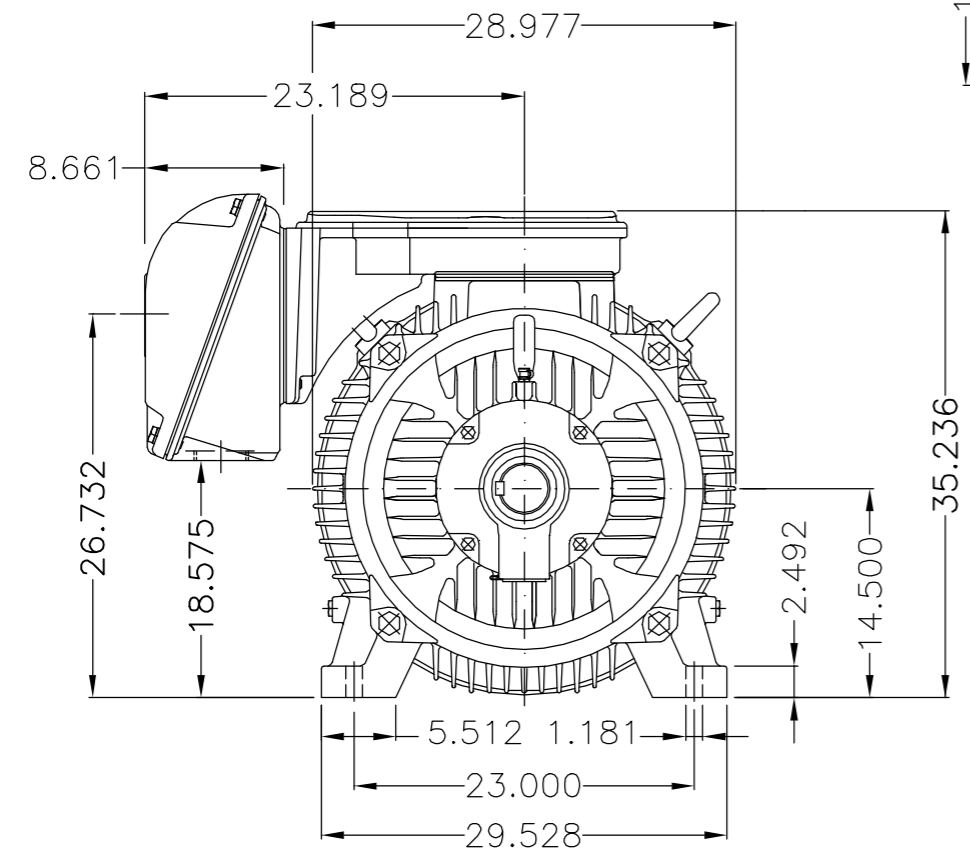
EIXO/SHAFT	
PADRÃO/STANDARD	
OPCIONAL/OPTIONAL	
ESPECIAL/SPECIAL	X

Dimensões em polegada
Dimensions in inches

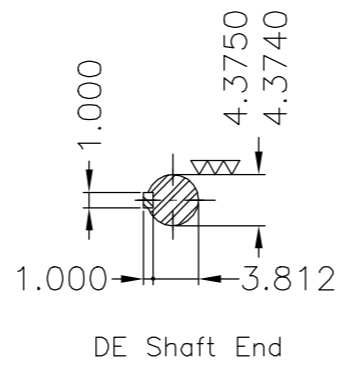
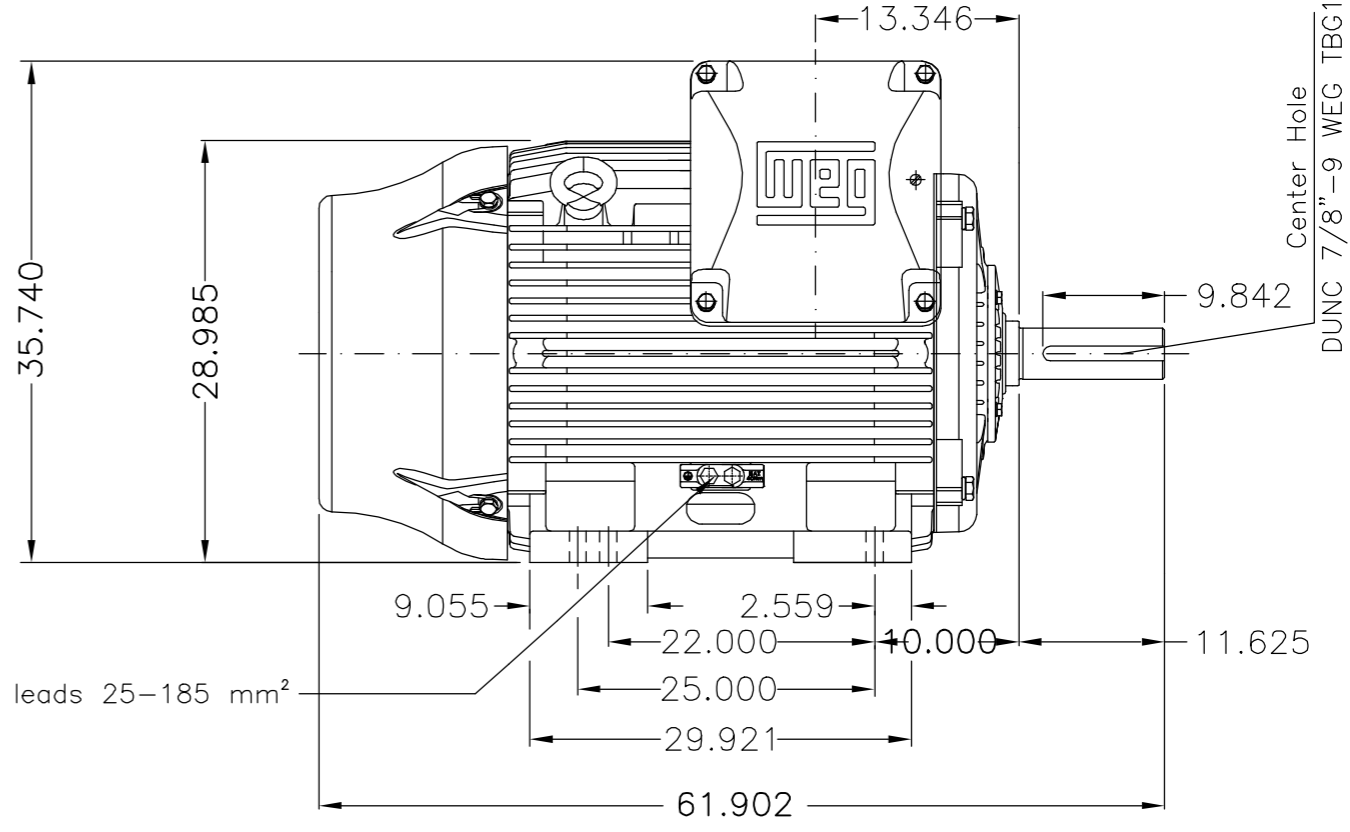
CERTIFIED WEG MOTORES
Certified document.
Not subject to changes.

THIS IS AN UPDATED REVISION, THE PREVIOUS ONE MUST BE DISREGARDED.

A
B
C
D
E



Main terminal box



DE Shaft End

Rolamento dianteiro de rolos NU-324 / NU-324 DE roller bearing						
Tampa dianteira especial / Special DE endshield						
Proteção térmica desligamento - Termostato 155°C / Thermostats 155°C to trip						
Categoria A / Design A						
Dispositivo de travamento de eixo / Shaft locking device						
Tampa traseira com mancal eletricamente isolado / N.D.E bearing hub electrically insulated						
Cor RAL 5009 / Color RAL 5009						
Plano de pintura 203A / Painting plan 203A						
Forma construtiva NEMA F-1 / Mounting NEMA F-1						
Forma construtiva B3D / Mounting B3R(D)						
WEG ELECTRIC CORPORATION - WEC						

500001293996		ATUALIZADO COTA H-H	AFILHO	MENSOR	10.04.2017	01
500001130675		DOCUMENTO NOVO	DVEGINI	NSCHMIDT	22.01.2016	00
ECM	LOC	SUMMARY OF MODIFICATIONS	EXECUTED	CHECKED	RELEASED	DATE VER
EXECUTED	DVEGINI	THREE PHASE W22 MOTOR - NEMA PREMIUM EFF FRAME 586/TZ IP55	10004037876 000 01			
CHECKED						
RELEASED	NSCHMIDT					
REL DT	22.01.2016					

250 HP 06 Poles 60Hz 414149566/0 MEC

A

UNCONTROLLED COPY RELEASED ZME A3