

Product Information Packet

November 7, 2016

Data shown is for the current revision model #. Ensure your nameplate model # matches.

Model Number:	5CD192NA027A136
Catalog Number:	D652
Instruction Manual:	GEH-3967
Connection Diagram:	36A167900CB501
Outline Drawing:	36A167926AA001

Accessory Connection Diagrams			
Bearing Thermocouple:	None	Heater:	None
RTD:	None	Thermistor:	None
Thermostat:	None	Winding Thermocouple:	None
Bearing RTD:	None		

Table of Contents	
Specification	01
Outline Drawing	02
Connection Drawing(s)	03

Marks:

MODEL NUMBER:	5CD192NA027A136	Enclosure Mtg Assem:	36A167775AC001
Outline Drawing:	36A167926AA001	Instruction Book:	GEH-3967
Connection Diagram:	36A167900CB501	RPM:	1750/2100
Horsepower:	60	Armature Amps:	97.2
Armature Volts:	500	Type:	CD365AT
Wound:	SHUNT	Power Supply Code:	C
Enclosure:	DPFG-BV	Insulation Class:	F
Duty:	CONT	Ambient Max (°C):	40 C
Rating Code:	192N1340-02	Field Volts:	300/150
K(V):	2.59 Cemf volts/Radian/Sec	WK2:	15.60Lb Ft2
K(T):	1.85 Ft/Amp	Year of Manufacture:	2016
Minimum Ambient:	0 C	Max Altitude:	3300 Ft

Resistances at 25 Degrees C :

Shunt Field:	61.8 OHMS
Armature:	.1442 OHMS
Commutator Field:	.0414 OHMS

Inductances:

Armature Circuit Total:	3.640 mH Saturated
Shunt Field:	41.0 Henries Unsaturated

Shunt Field Data:

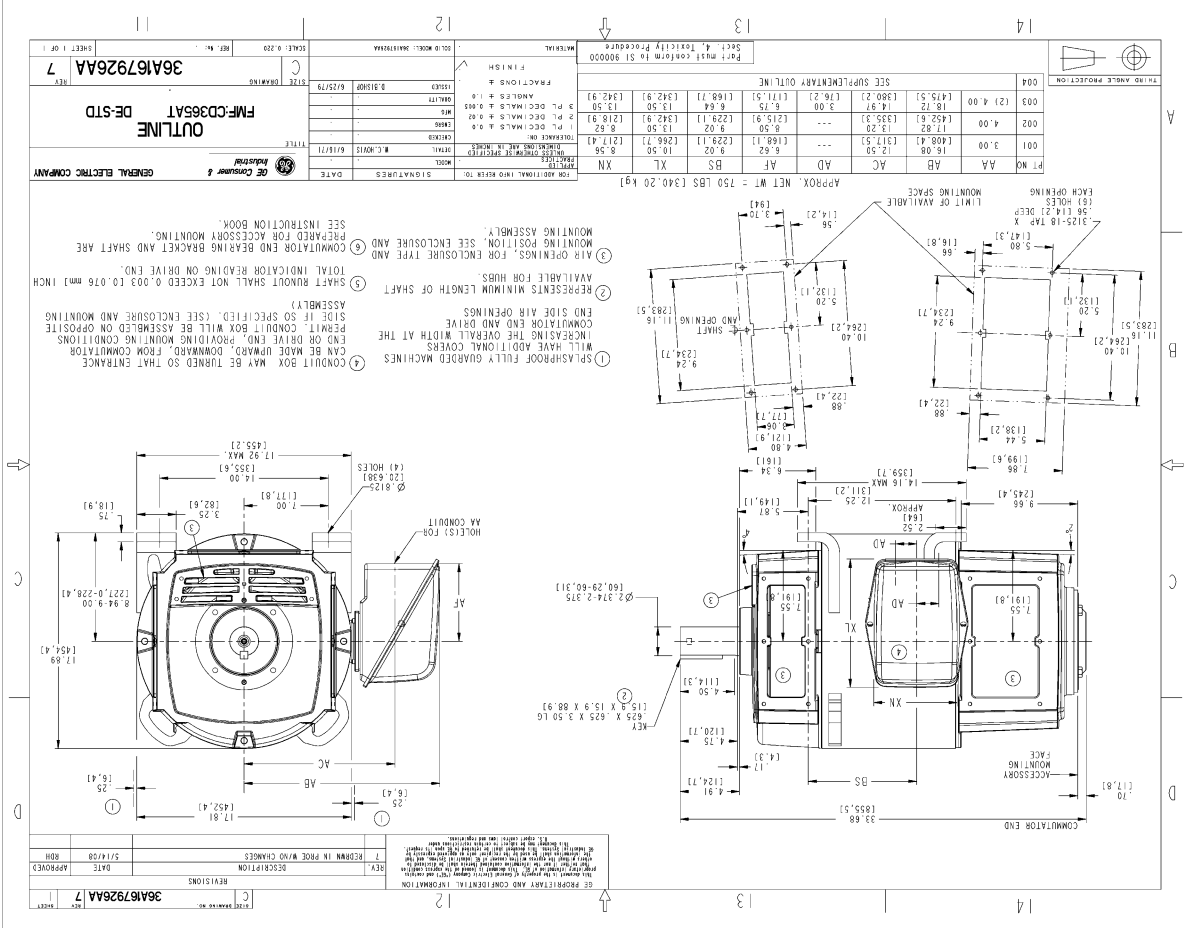
Shunt Field Current(1): 3.4 AMPS at Rated Load and 1750 RPM
 Shunt Field Current(2): 2.98 AMPS at Rated Load and 1867 RPM
 Shunt Field Current(3): 2.38 AMPS at Rated Load and 2100 RPM

Additional Machine Notes:

DRIPPROOF FULLY GUARDED, BLOWER VENTILATED - BALL BEARINGS
 CONDUIT BOX ON RIGHT HAND SIDE FACING COMMUTATOR END
 STANDARD SHAFT DRIVE END ONLY - WITH FEET
 WITH:
 CSA STAMP
 THERMOSTAT- NORMALLY CLOSED, AC RATING- 600V MAX-
 .5A, 250V-1.5A, OR 125V-3A- DC RATING- 30V MAX-
 1.5A. MAXIMUM CURRENT BASED ON INDUCTIVE LOADS UP
 TO AND INCLUDING NEMA NO. 5 CONTACTOR.



Mark:



NAME: 20080954 OBJ: 36A167926AA DATE: 19-Mar-08 11:43:07

Marks:

NO S.O.	GENERAL ELECTRIC	36A167900CB501 CONT ON SHEET
36A167900CB501 CONT ON SHEET	TITLE CONNECTION DIAGRAM	SN NO.
SR NO.	FIRST MADE FOR	4 POLE - 360AT (WP)
DIRECT CURRENT MOTOR AND GENERATOR - SHUNT WOUND 1 OR 2 CIRCUIT SHUNT FIELD - 2 CIRCUIT COMMUTATING FIELD		
<p>Views Facing Commutator End - Leads Out Right Side -</p>		
<p>Views Facing Commutator End - Leads Out Left Side -</p>		
<p>ALL EXTERNAL LEADS ARE MARKED. ALL CONNECTIONS AND TERMINATIONS EXTERNAL TO MAGNET FRAME MUST BE INSULATED PER NATIONAL ELECTRICAL CODE AND SOUND LOCAL PRACTICES.</p> <p>SPACE HEATERS, WHEN SPECIFIED, WILL HAVE LEADS WITH TERMINAL MARKINGS H1 AND H2.</p> <p>THERMOSTAT, WHEN SPECIFIED, WILL HAVE LEADS WITH TERMINAL MARKINGS P1 AND P2.</p> <p>ENCIRCLED NUMBERS MAY BE USED FOR PART IDENTIFICATION.</p>		
<p>FOR HIGH NAMEPLATE EXCITATION VOLTAGE CONNECT SHUNT FIELD LEADS AS INDICATED</p>		
<p>MOTOR CONNECTIONS: FOR CCW ROTATION FACING COMMUTATOR END, MAKE LEADS F1 AND A1 THE SAME POLARITY. FOR CW ROTATION FACING COMMUTATOR END, MAKE LEADS F1 AND A2 THE SAME POLARITY.</p> <p>GENERATOR CONNECTIONS: FOR CW ROTATION FACING COMMUTATOR END, F1 POSITIVE WILL MAKE A2 POSITIVE. FOR CCW ROTATION FACING COMMUTATOR END, F1 POSITIVE WILL MAKE A1 POSITIVE.</p>		
<p>FOR LOW NAMEPLATE EXCITATION VOLTAGE CONNECT SHUNT FIELD LEADS AS INDICATED</p>		
<p>MOTOR CONNECTIONS: FOR CCW ROTATION FACING COMMUTATOR END, MAKE LEADS (F1,F3) & A1 THE SAME POLARITY. FOR CW ROTATION FACING COMMUTATOR END, MAKE LEADS (F1,F3) & A2 THE SAME POLARITY.</p> <p>GENERATOR CONNECTIONS: FOR CW ROTATION FACING COMMUTATOR END, (F1,F3) POSITIVE WILL MAKE A2 POSITIVE. FOR CCW ROTATION FACING COMMUTATOR END, (F1,F3) POSITIVE WILL MAKE A1 POSITIVE.</p>		
I	10-7-94 R.D.BOLLA	NO S.O. RETR
MADE BY W.C.HOVIS FEB.15.1972		QC (I) CAD
RE-ISSUED CAD/ R.D.BOLLA 10-7-94	FILE KC13-1	GE MOTORS ERIE
DIV OR DEPT	LOCATION	36A167900CB501 CONT ON SHEET
		SN NO.

DC2-28112-15-671