

Product Information Packet

November 8, 2016

Data shown is for the current revision model #. Ensure your nameplate model # matches.

Model Number:	5KS286STE222A
Catalog Number:	M7748
Instruction Manual:	GEI-M1031
Connection Diagram:	GEM2034E-FIG210
Outline Drawing:	358B6279AC

Accessory Connection Diagrams			
Bearing Thermocouple:	None	Heater:	None
RTD:	None	Thermistor:	None
Thermostat:	None	Winding Thermocouple:	None
Bearing RTD:	None		

Table of Contents	
Specification	01
Performance Characteristics	02
Outline Drawing	03
Connection Drawing(s)	04

Marks:

MODEL NUMBER:	5KS286STE222A	Estimated Weight:	450 Lbs
Outline Drawing:	358B6279AC	Time Rating:	CONT
Connection Diagram:	GEM2034E-FIG210	Enclosure:	TEFC
Instruction Book:	GEI-M1031	Encl Construction:	SD
Design Code:	28AD1018A	Ambient Max(°C):	40
Type:	KS	Alt Ambient Max(°C):	--
Frame:	286TC	Insulation Class:	F
Phases:	3	NEMA Design:	B
Poles:	4	Nominal Efficiency:	93.6 %
Output Power:	30HP 22.2KW	Guaranteed Efficiency:	92.4
RPM:	1775	3/4 Load Efficiency:	94.5
Voltage:	230/460	KVA Code:	G
Hertz:	60	Max KVAR:	8.4
Amps - FL:	71.8/35.9	Power Factor:	83.5
Service Factor:	1.15	Bearing - DE:	6310ZZ
Alt Service Factor:	--	Bearing - ODE:	6210ZZ

Enclosure is Totally Enclosed Fan-Cooled

Stamped Nameplate Notes:

USABLE AT 200V @ 30 HP, 81.7 AMPS @ 1.0 SF

LRA: 429.2/214.6

50HZ DATA: 25 HP,200/400V,79.2/39.6 AMPS @ 1.15 SF

50HZ DATA: 30 HP,200/400V,82.6/41.3 AMPS @ 1.00 SF

GREASE TYPE: SHELL ALVANIA R3 LITHIUM GREASE

Additional Information:

CONDUIT BOX MATERIAL: CAST IRON

SUITABLE FOR USE IN CLASS I DIVISION 2 LOCATIONS

CLASS I DIVISION 2 GROUPS A,B,C,D T3C

CLASS I ZONE 2 IIC T3C



Performance Characteristics

1st Winding 1st Connection

Design: 28AD1018A

Marks:

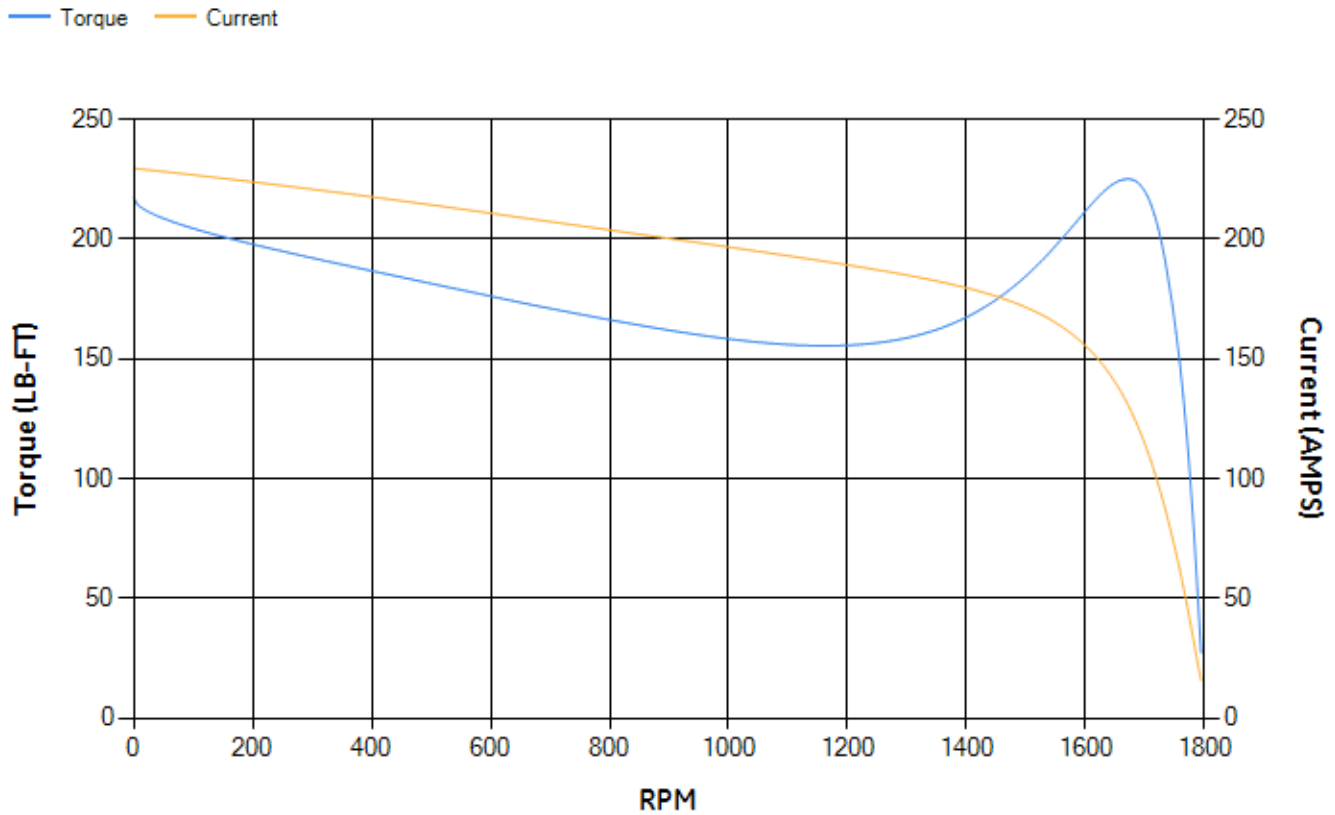
LOAD %	125.0	115.0	100.0	75.0	50.0	25.0	0.0
% EFF	93.25	93.61	94.24	94.46	94.17	91.5	0.00
% PF	84.25	84.23	83.7	80.88	73.17	52.63	4.79
AMPS	44.68	40.95	35.6	27.57	20.38	14.58	11.61

TORQ(FL)#FT	88.82	TORQ(LR)%FL	244.64	TORQ(BD)%FL	252.5
AMPS(LR)	229.54	PF AT START	0.4		

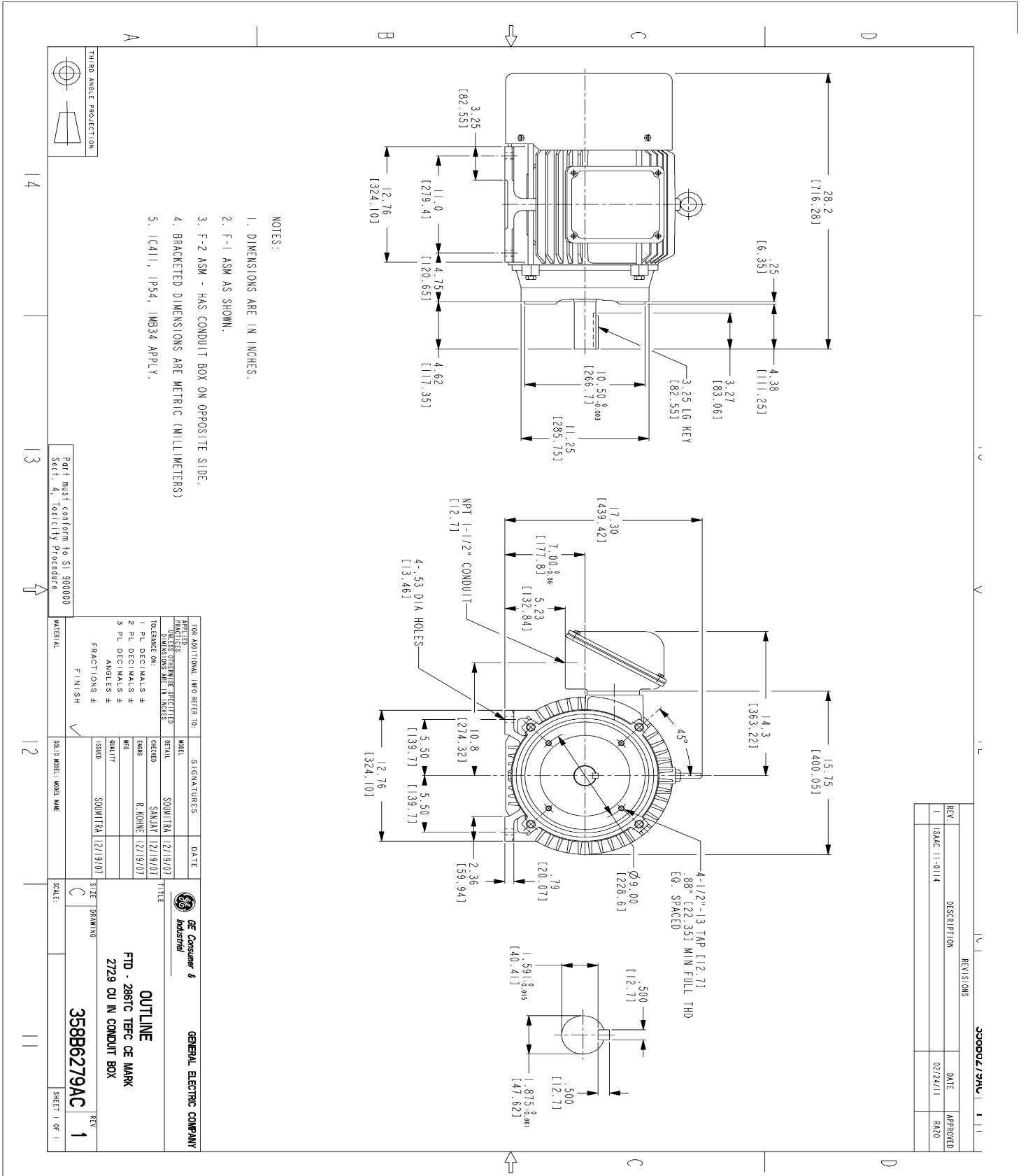
This motor is capable of two cold or one hot start with a maximum connected load inertia of 1023 Lb-Ft Sq (43.07 Kg-meter Sq)at 100% voltage, where the load torque varies with the square of the speed. Acceleration time with maximum inertia and the above load type is 40 seconds. Safe stall time at 100% voltage is 68 seconds cold, 48 seconds hot. Rotor inertia is 4.9 Lb-Ft Sq (0.21 Kg-meter Sq).

Open Circuit A-C:	0.546	Short Circuit D-C:	0.021
Short Circuit A-C:	0.023	X/R Ratio:	7.739
Stator Slots:	48	Rotor Slots:	40

Speed Torque Current Curve (First Connection, First Speed)



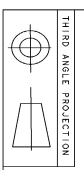
Marks:



- NOTES:
1. DIMENSIONS ARE IN INCHES.
 2. F-1 ASM AS SHOWN.
 3. F-2 ASM - HAS CONDUIT BOX ON OPPOSITE SIDE.
 4. BRACKETED DIMENSIONS ARE METRIC (MILLIMETERS)
 5. IC411, IP54, IMB34 APPLY.

REVISIONS		
REV.	DESCRIPTION	DATE
1	ISAC 11-0114	02/24/11
		APPROVED
		RA20

FOR ADDITIONAL INFO REFER TO:		DATE	
DESIGN	MODEL	SIGNATURES	
ENGINEER	SOQ117A		12/19/07
CHECKED	SAMJAY		12/19/07
TOLERANCE DR.	R. KOHNE		12/19/07
1 PL DECIMALS #			
2 PL DECIMALS #			
3 PL DECIMALS #			
ANGLES #			
FRACTIONS #			
FINISH	SOQ117A		12/19/07
MATERIAL			
SOQ10 MODEL: MODEL NAME			
TITLE		GENERAL ELECTRIC COMPANY	
OUTLINE			
FTD - 286TC TERC GE MARK			
2729 CU IN CONDUIT BOX			
SIZE	DRAWING	SCALE:	
C			
358B6279AC	REV 1		
SHEET 1 OF 1			



14

13

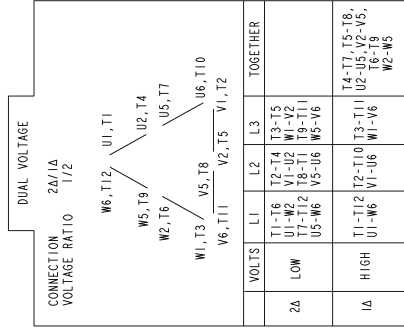
12

11

330002/344 1 11

Marks:

Connection Diagram
GEM2034E-FIG210



NAME:501452353 OBJECT:GEM2034E-FIG210 DATE:25-Feb-08 14:03:35

