

Product Information Packet

November 8, 2016

Data shown is for the current revision model #. Ensure your nameplate model # matches.

| | |
|----------------------------|----------------------|
| Model Number: | 5KS449XAA143C |
| Catalog Number: | M9367 |
| Instruction Manual: | GEI-56128 |
| Connection Diagram: | GEM2034E-FIG20 |
| Outline Drawing: | 239C6800VY |

| Accessory Connection Diagrams | | | |
|--------------------------------------|------|------------------------------|------|
| Bearing Thermocouple: | None | Heater: | None |
| RTD: | None | Thermistor: | None |
| Thermostat: | None | Winding Thermocouple: | None |
| Bearing RTD: | None | | |

Table of Contents

| | |
|-----------------------------|----|
| Specification | 01 |
| Performance Characteristics | 02 |
| Outline Drawing | 03 |
| Connection Drawing(s) | 04 |
| Spare parts | 05 |



Marks:

| | | | |
|----------------------------|----------------------|-------------------------------|----------|
| MODEL NUMBER: | 5KS449XAA143C | Estimated Weight: | 2770 Lbs |
| Outline Drawing: | 239C6800VY | Time Rating: | CONT |
| Connection Diagram: | GEM2034E-FIG20 | Enclosure: | TEFC |
| Instruction Book: | GEI-56128 | Encl Construction: | 841 |
| Design Code: | 49BD0087B | Ambient Max(°C): | 40 |
| Type: | KS | Alt Ambient Max(°C): | -- |
| Frame: | 449TS | Insulation Class: | H |
| Phases: | 3 | NEMA Design: | B |
| Poles: | 2 | Nominal Efficiency: | 95.8 % |
| Output Power: | 250HP 185KW | Guaranteed Efficiency: | 95.4 |
| RPM: | 3580 | 3/4 Load Efficiency: | 96.2 |
| Voltage: | 575 | KVA Code: | G |
| Hertz: | 60 | Max KVAR: | 38.0 |
| Amps - FL: | 211.0 | Power Factor: | 92.5 |
| Service Factor: | 1.15 | Bearing - DE: | 6314ZC3 |
| Alt Service Factor: | -- | Bearing - ODE: | 6314ZC3 |

Enclosure is Totally Enclosed Fan-Cooled

Stamped Nameplate Notes:

FOR DIRECT COUPLED LOAD ONLY
 DE BRG 70BC03JP30, ODE BRG 70BC03JP30
 ROT CCW FACING ODE LEAD/PH SEQ 3-2-1/1-2-3
 STAMP NP249A5564P051 AS BELOW:
 MODEL:5KS449XAA143C S/N: XXX
 CSA CERTIFIED CSA09.2216219 FOR EX NA IIC 200 C GC
 CL 1 ZONE2 AEX NA IIC 200C;CL 1 DIV2 GRP ABCD 200C
 IN -25C <= AMB <= 40C, 1.0 SF ON SINE-WAVE PWR
 SURF TEMP 260C AT 1.15SF ON SINE-WAVE PWR
 OR 215 C VT OR 230 C CT OR --- C CHP PWM CONTROL
 ALTERNATE RATING FOR PWM CONTROL 1.0SF 40C AMB
 VT 0-60 HZ, CT 45-60 HZ, CHP --- HZ.
 EXCEPTION TO IEEE-STD-841-2009:SOUND POWER 94 DBA

Additional Information:

2P - TS EXTN - SPLIT LEAD
 PAINTED FRAME ID & SHAFT,
 FAN COVER INSIDE & ODE E/S OUTSIDE
 700 CU IN - 3.00" NPT WITH DRAIN HOLES
 INPRO SEAL BOTH ENDS
 OIL RESISTANT SLEEVING ON LEADS
 .0015" TIR SHAFT RUNOUT
 ROUTINE TEST REPORT AND 5 POINT VIBRATION TEST
 REPORT INCLUDED IN C/B
 COPPER WASHER UNDER HEADS OF BEARING CAP BOLTS,
 APPLY TITE-SEAL (A50CD427A) ON BEARING CAP SCREWS,
 RABBETS AND PLUG THREADS.

GROUND PAD
F1 MOUNTING

Performance Characteristics

1st Winding 1st Connection

Design: 49BD0087B

Marks:

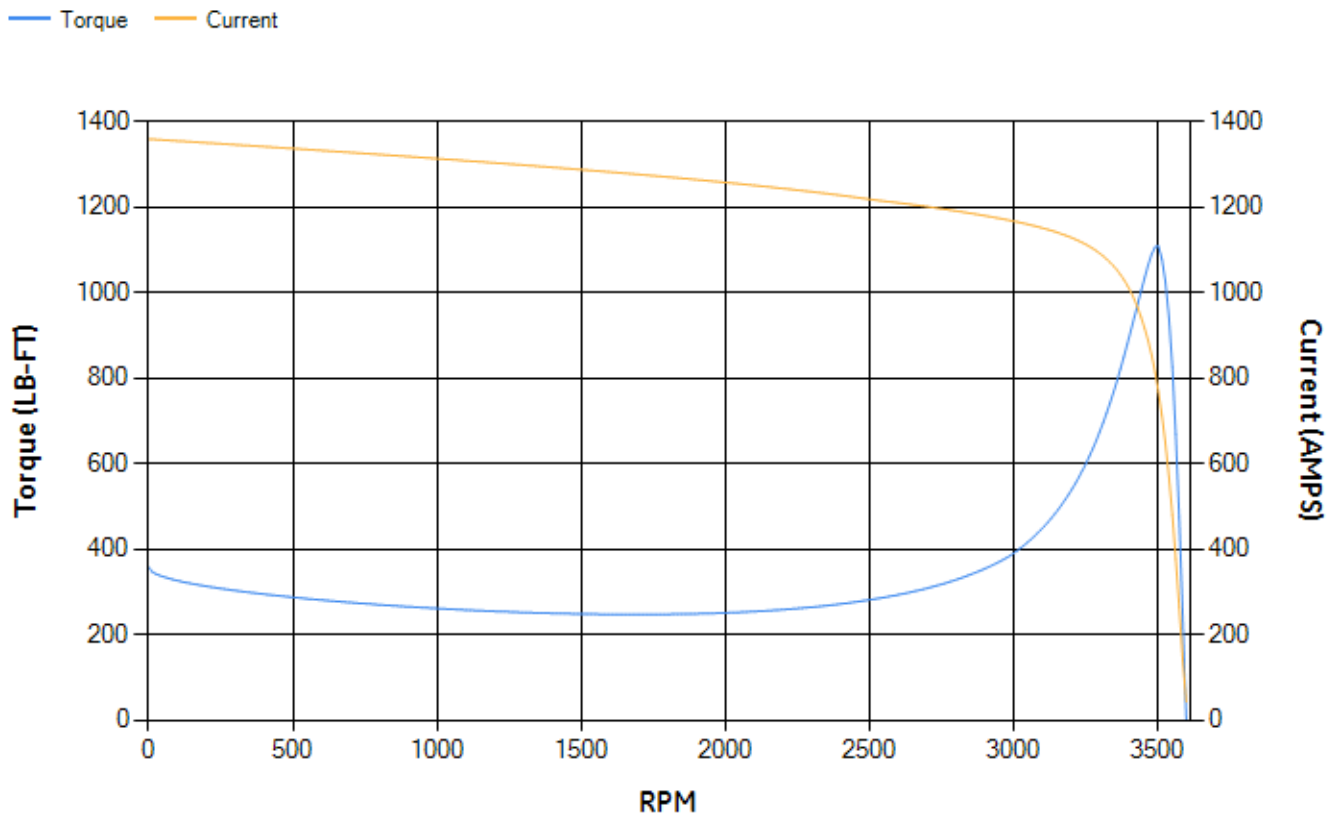
| LOAD % | 125.0 | 115.0 | 100.0 | 75.0 | 50.0 | 25.0 | 0.0 |
|--------|--------|--------|--------|-------|--------|-------|-------|
| % EFF | 95.53 | 95.73 | 96.18 | 96.21 | 95.97 | 94.08 | 0.00 |
| % PF | 92.23 | 92.4 | 92.42 | 91.55 | 88.01 | 73.79 | 5.95 |
| AMPS | 265.56 | 243.37 | 210.59 | 159.4 | 110.81 | 67.41 | 42.37 |

| | | | | | |
|--------------------|---------|--------------------|-------|--------------------|--------|
| TORQ(FL)#FT | 366.75 | TORQ(LR)%FL | 97.39 | TORQ(BD)%FL | 302.69 |
| AMPS(LR) | 1358.64 | PF AT START | 0.18 | | |

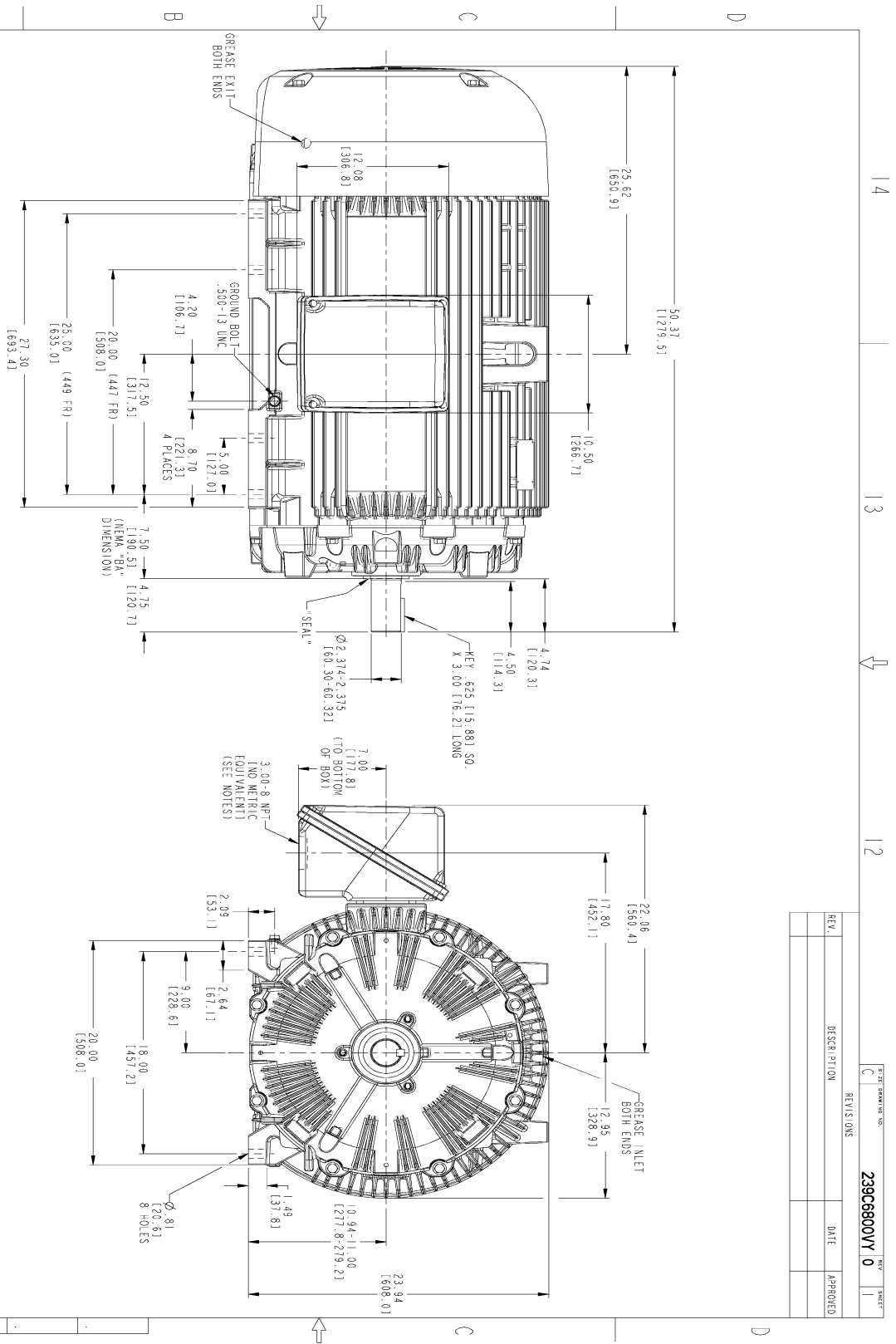
This motor is capable of two cold or one hot start with a maximum connected load inertia of 734 Lb-Ft Sq (30.9 Kg-meter Sq)at 100% voltage, where the load torque varies with the square of the speed. Acceleration time with maximum inertia and the above load type is 41 seconds. Safe stall time at 100% voltage is 97 seconds cold, 50 seconds hot. Rotor inertia is 48.55 Lb-Ft Sq (2.04 Kg-meter Sq).

| | | | |
|---------------------------|-------|---------------------------|--------|
| Open Circuit A-C: | 2.263 | Short Circuit D-C: | 0.038 |
| Short Circuit A-C: | 0.074 | X/R Ratio: | 14.286 |
| Stator Slots: | 48 | Rotor Slots: | 38 |

Speed Torque Current Curve (First Connection, First Speed)



Marks:

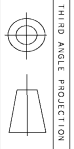


| | | | |
|------|-------------|------|----------|
| REV. | DESCRIPTION | DATE | APPROVED |
| | | | |
| | | | |

SIZE: DRAWING NO. 239C6800VY 0 REV. SHEET 1

NOTES:

1. CONDUIT BOX MAY BE PLACED WITH THE ENTRANCE DOWN, UP OR ON EITHER SIDE.
2. F-1 ASSEMBLY AS SHOWN.
3. F-2 ASSEMBLY CONDUIT BOX ON OPPOSITE SIDE.
4. BRACKETED DIMENSIONS ARE METRIC (MILLIMETERS).
5. TOLERANCE ON PERMISSIBLE SHAFT EXTENSION RINOUT IS .0015 T.I.R.

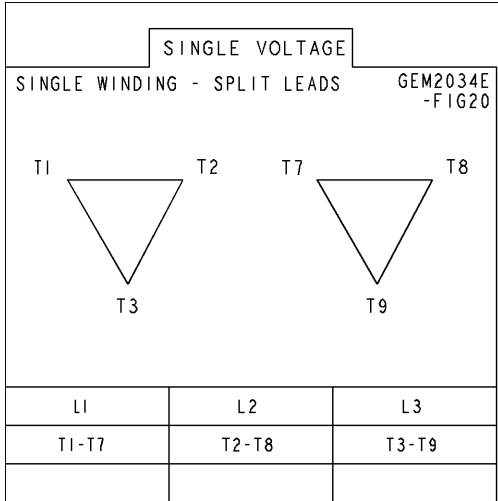


THIRD ANGLE PROJECTION

| | | | |
|-------------------|---------------------|----------|--|
| MODEL | SIGNATURES | DATE | <p>GENERAL ELECTRIC COMPANY</p> <p>OUTLINE</p> <p>447/449 TS TEFC XSD 841</p> <p>700 CU. IN. C. BOX</p> <p>239C6800VY</p> |
| SCALE | TEKASHI | 01/20/15 | |
| DESIGN | YOKAI | 01/20/15 | |
| CHKD | YOKAI | 01/20/15 | |
| ISSUED | TEKASHI | 01/20/15 | |
| SIZE | DRAWING | | REV. |
| SCALE: 0.180 | REF. NO. 239C6800VY | | 0 |
| DISTRIBUTION: MMP | | | SHEET 1 OF 1 |

Marks:

Connection Diagram
GEM2034E-FIG20



| End shield Assembly | | |
|---------------------|---------------|----------------|
| Part Description | DE Side Part# | ODE Side Part# |
| End Shield | 115E4354AA1 | 115E4354LL1 |
| Bearing | 235A2616AA01 | 235A2616AA01 |
| Slinger/Inproseal | 235A4575GS3 | 235A4575GS3 |

| Fan & Fan Cover Assembly | |
|--------------------------|-------------|
| Part Description | Part# |
| Fan | 149C4287AA2 |
| Fan Cover | 128D6841AC1 |

| Conduit & Accessories Box Assembly | |
|------------------------------------|-------------|
| Part Description | Part# |
| Conduit Box | 118D4408DG2 |

| Mechanical Accessories | |
|------------------------|-------|
| Part Description | Part# |
| Brake | |
| Tachometer | |