

Product Information Packet

November 9, 2016

Data shown is for the current revision model #. Ensure your nameplate model # matches.

Model Number:	5KS254STE122A
Catalog Number:	M7719
Instruction Manual:	GEI-M1031
Connection Diagram:	GEM2034E-FIG210
Outline Drawing:	358B6278AA

Accessory Connection Diagrams

Bearing Thermocouple:	None	Heater:	None
RTD:	None	Thermistor:	None
Thermostat:	None	Winding Thermocouple:	None
Bearing RTD:	None		

Table of Contents

Specification	01
Performance Characteristics	02
Outline Drawing	03
Connection Drawing(s)	04



Marks:

MODEL NUMBER:	5KS254STE122A	Estimated Weight:	287 Lbs
Outline Drawing:	358B6278AA	Time Rating:	CONT
Connection Diagram:	GEM2034E-FIG210	Enclosure:	TEFC
Instruction Book:	GEI-M1031	Encl Construction:	SD
Design Code:	25AD0015A	Ambient Max(°C):	40
Type:	KS	Alt Ambient Max(°C):	--
Frame:	254TC	Insulation Class:	F
Phases:	3	NEMA Design:	A
Poles:	2	Nominal Efficiency:	91 %
Output Power:	15HP 11.1KW	Guaranteed Efficiency:	89.5
RPM:	3530	3/4 Load Efficiency:	90.3
Voltage:	230/460	KVA Code:	H
Hertz:	60	Max KVAR:	3.2
Amps - FL:	33.6/16.8	Power Factor:	92
Service Factor:	1.15	Bearing - DE:	6310ZZ
Alt Service Factor:	--	Bearing - ODE:	6208ZZ

Enclosure is Totally Enclosed Fan-Cooled

Stamped Nameplate Notes:

USABLE AT 200V @ 15 HP,38.4 AMPS @ 1.0 SF

LRA: 239.6/119.8

50HZ DATA: 10 HP, 200/400V, 30/15 AMPS @ 1.15 SF

50HZ DATA: 15 HP,200/400V,38.6/19.3 AMPS @ 1.00 SF

GREASE TYPE: SHELL ALVANIA R3 LITHIUM GREASE

Additional Information:

CONDUIT BOX MATERIAL: CAST IRON

SUITABLE FOR USE IN CLASS I DIVISION 2 LOCATIONS

CLASS I DIVISION 2 GROUPS A,B,C,D T3C

CLASS I ZONE 2 IIC T3C



Performance Characteristics

1st Winding 1st Connection

Design: 25AD0015A

Marks:

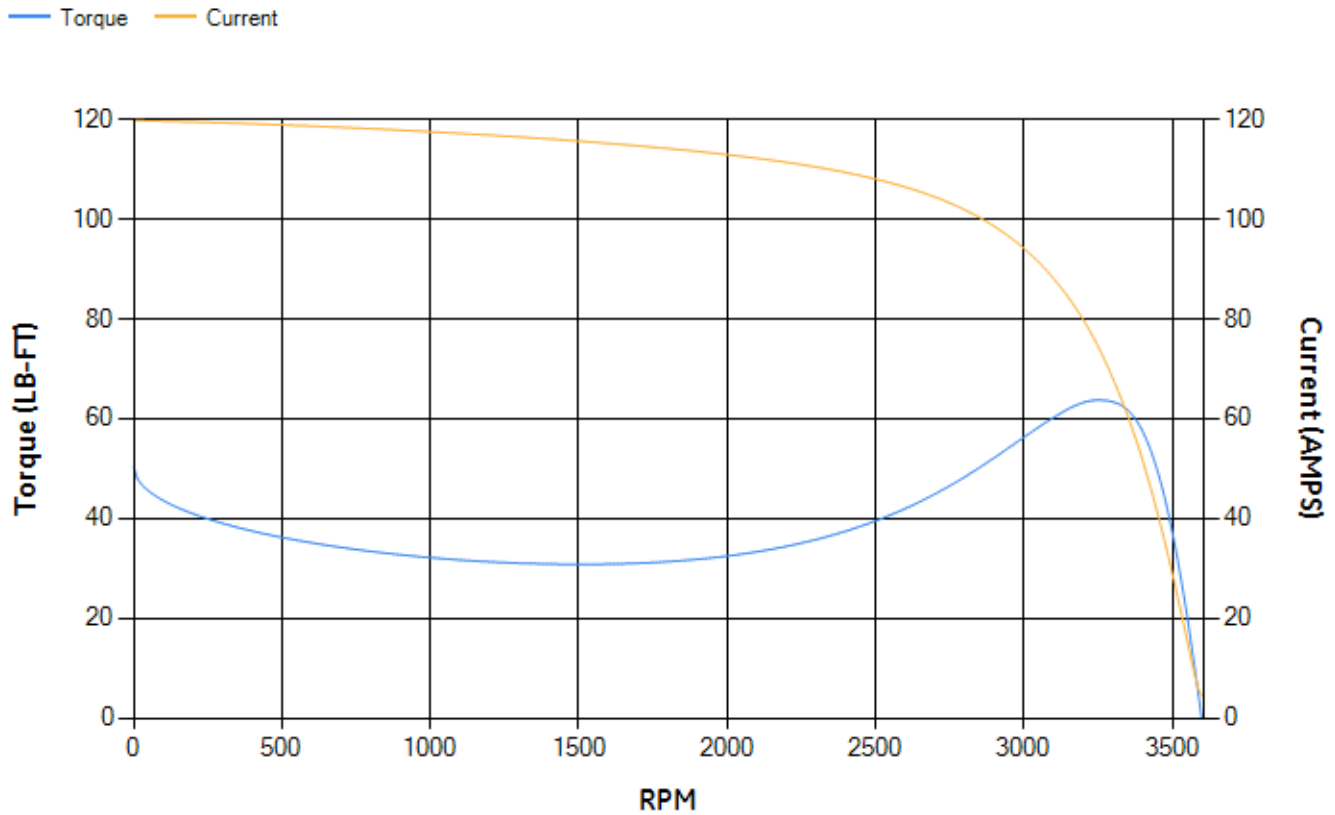
LOAD %	125.0	115.0	100.0	75.0	50.0	25.0	0.0
% EFF	89.22	89.62	90.28	90.34	89.34	84.07	0.00
% PF	92.52	92.37	91.88	89.85	84.36	67.39	13.46
AMPS	21.26	19.5	16.93	12.97	9.31	6.19	4.39

TORQ(FL)#FT	22.31	TORQ(LR)%FL	225.94	TORQ(BD)%FL	281.65
AMPS(LR)	119.79	PF AT START	0.35		

This motor is capable of two cold or one hot start with a maximum connected load inertia of 90 Lb-Ft Sq (3.79 Kg-meter Sq) at 100% voltage, where the load torque varies with the square of the speed. Acceleration time with maximum inertia and the above load type is 33 seconds. Safe stall time at 100% voltage is 56 seconds cold, 39 seconds hot. Rotor inertia is 1.06 Lb-Ft Sq (0.04 Kg-meter Sq).

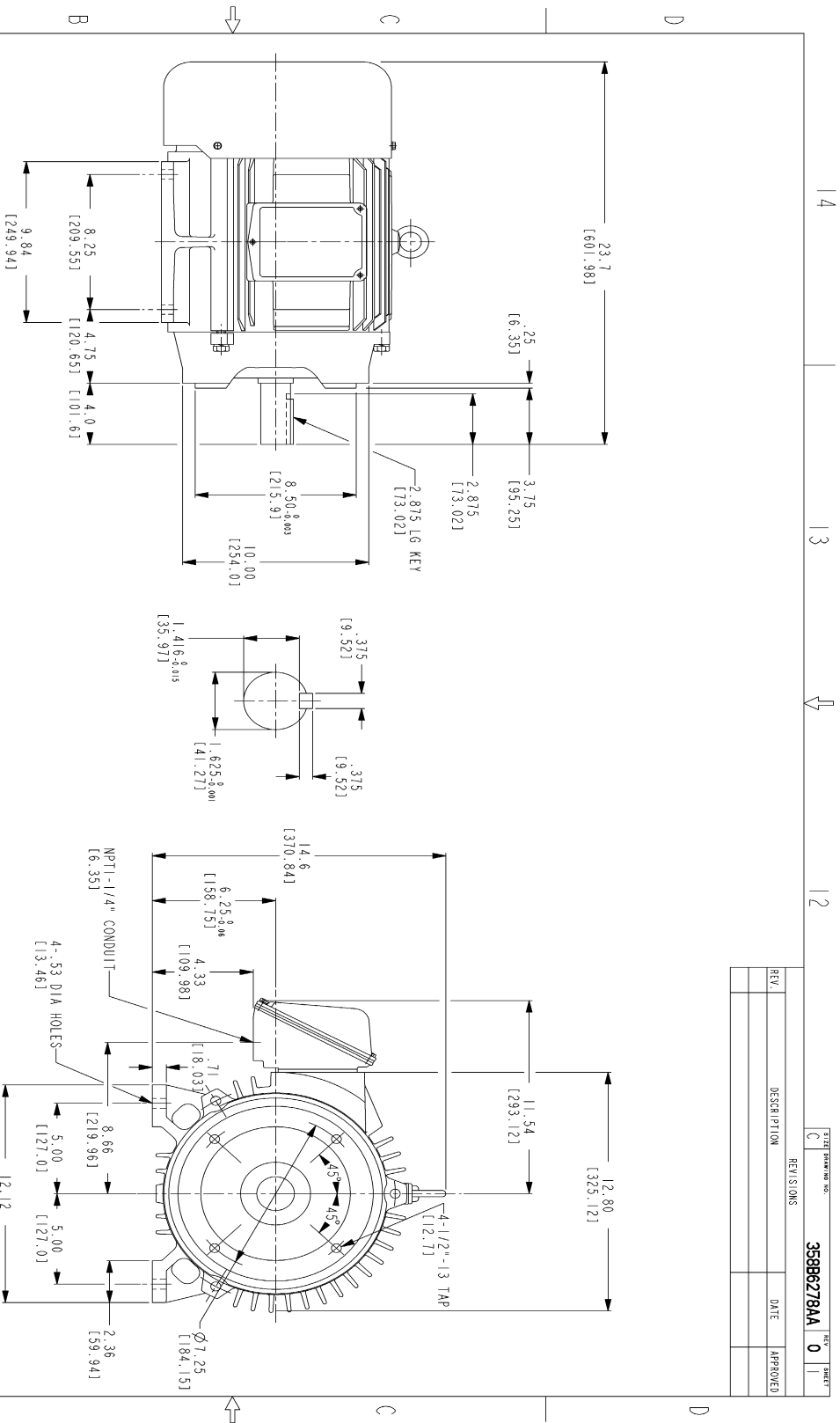
Open Circuit A-C:	0.525	Short Circuit D-C:	0.014
Short Circuit A-C:	0.016	X/R Ratio:	5.229
Stator Slots:	36	Rotor Slots:	44

Speed Torque Current Curve (First Connection, First Speed)



NAME:501291659 OBJECT:358B6278AA DATE:14-Jan-08 12:09:21

Marks:



NOTES:

- 1. DIMENSIONS ARE IN INCHES.
- 2. F-1 ASM AS SHOWN.
- 3. F-2 ASM - HAS CONDUIT BOX ON OPPOSITE SIDE.
- 4. BRACKETED DIMENSIONS ARE METRIC (MILLIMETERS)
- 5. ICA111, IP54, IMB34 APPLY.

THIRD ANGLE PROJECTION



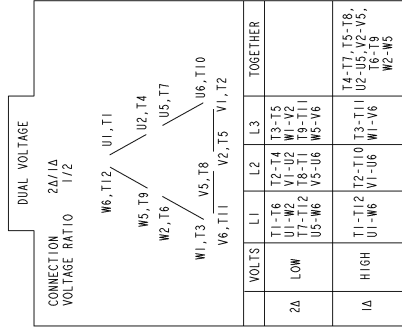
Part must conform to SI 9000000 Sect 4, Toxicity Procedure

FOR ADDITIONAL INFO REFER TO:	SIGNATURES	DATE
DESIGN SPECIFICATIONS	SMITH	12/19/07
DRAWING SPECIFICATIONS	SMITH	12/19/07
TOLERANCE ON:	ENG	12/19/07
1. PL DECIMALS ±	WGS	12/19/07
2. PL DECIMALS ±	QUALITY	
3. PL DECIMALS ±	ISSUED	12/19/07
ANGLES ±	FINISH	
FRACTIONS ±	SOULD MODEL NAME	

GE Consumer & Industrial		GENERAL ELECTRIC COMPANY	
OUTLINE			
FDD - 254TC IERC CE MARK			
1005 CU IN CONDUIT BOX			
SCALE:	C	REV:	0
SHEET:	1 OF 1	SHEET:	0 OF 1

Marks:

Connection Diagram
GEM2034E-FIG210



NAME:501452353 OBJECT:GEM2034E-FIG210 DATE:25-Feb-08 14:03:35

