

Product Information Packet

January 12, 2017

Data shown is for the current revision model #. Ensure your nameplate model # matches.

Model Number:	5KS365CAG208C
Catalog Number:	E9290
Instruction Manual:	GEI-56128
Connection Diagram:	GEM2034E-FIG20
Outline Drawing:	225B5200AL

Accessory Connection Diagrams			
Bearing Thermocouple:	None	Heater:	None
RTD:	None	Thermistor:	None
Thermostat:	3027JE-2	Winding Thermocouple:	None
Bearing RTD:	None		

Table of Contents	
Specification	01
Performance Characteristics	02
Outline Drawing	03
Connection Drawing(s)	04

Marks:

MODEL NUMBER:	5KS365CAG208C	Estimated Weight:	1050 Lbs
Outline Drawing:	225B5200AL	Time Rating:	CONT
Connection Diagram:	GEM2034E-FIG20	Enclosure:	TEFC
Instruction Book:	GEI-56128	Encl Construction:	XP
Design Code:	36ED1041A	Ambient Max(°C):	40
Type:	KS	Alt Ambient Max(°C):	XX
Frame:	365T	Insulation Class:	F
Phases:	3	NEMA Design:	B
Poles:	4	Nominal Efficiency:	95.4 %
Output Power:	75HP 55.5KW	Guaranteed Efficiency:	94.5
RPM:	1780	3/4 Load Efficiency:	95.9
Voltage:	460	KVA Code:	G
Hertz:	60	Max KVAR:	28.2
Amps - FL:	92.0	Power Factor:	80.0
Service Factor:	1.0	Bearing - DE:	6314ZC3
Alt Service Factor:	XX	Bearing - ODE:	6314ZC3

Enclosure is Totally Enclosed Fan-Cooled

Stamped Nameplate Notes:

TEMP CODE T3C
THERMOSTAT LEADS TB1-TB2:TRIP

Additional Information:

STAMP NP235A3573 AS FOLLOWS:
CL I GR C&D CL II GR F&G
4 POLE, T SHAFT EXTN
EXPLOSION PROOF
NC THERMOSTAT LEADS TO MAIN CONDUIT BOX
920 Cu. In. CBOX

Performance Characteristics

1st Winding 1st Connection

Design: 36ED1041A

Marks:

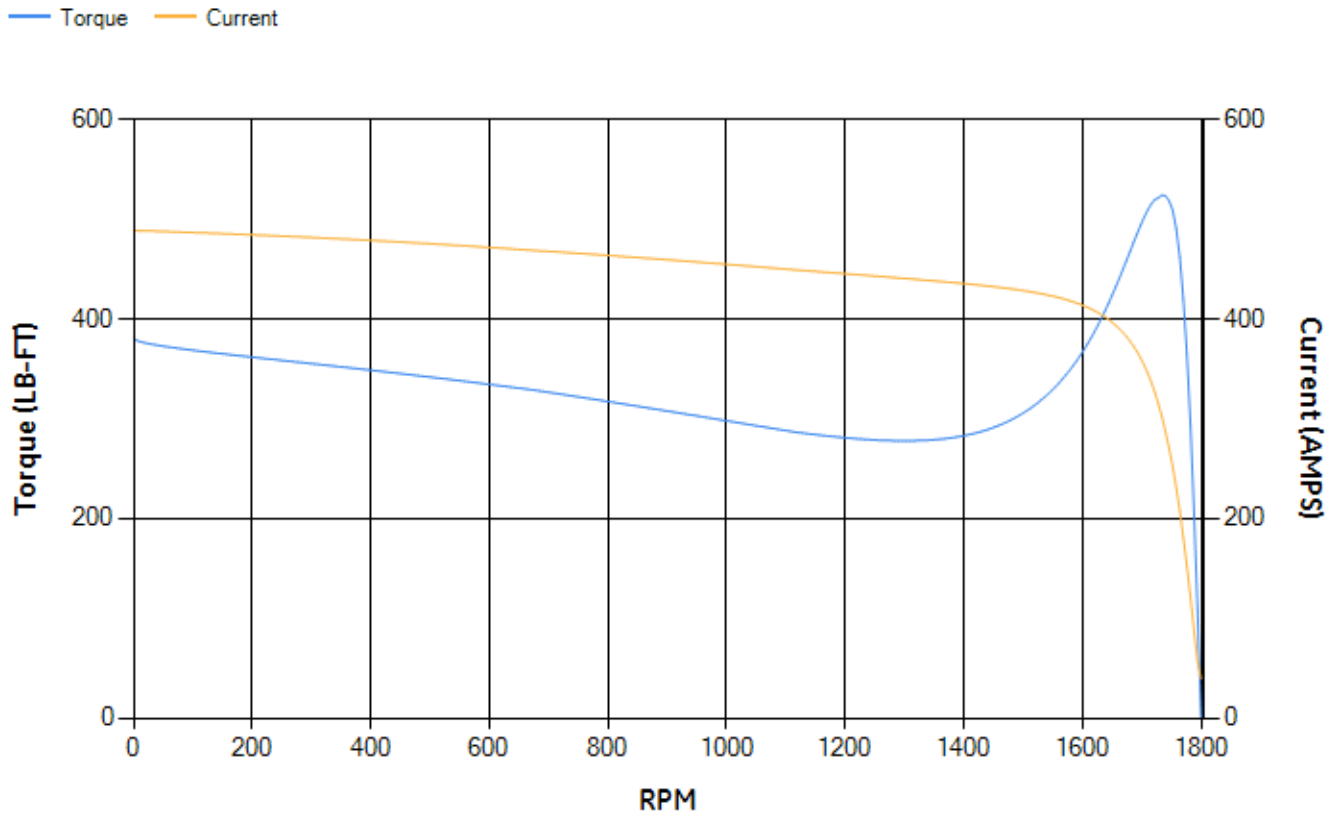
LOAD %	125.0	115.0	100.0	75.0	50.0	25.0	0.0
% EFF	95.37	95.54	95.95	95.86	95.43	93	0.00
% PF	82.23	81.61	80.09	75.15	64.52	42.12	2.9
AMPS	111.89	103.53	91.35	73.08	57.01	44.8	39.23

TORQ(FL)#FT	220.91	TORQ(LR)%FL	172.32	TORQ(BD)%FL	235.87
AMPS(LR)	488.6	PF AT START	0.34		

This motor is capable of two cold or one hot start with a maximum connected load inertia of 1355 Lb-Ft Sq (57.05 Kg-meter Sq)at 100% voltage, where the load torque varies with the square of the speed. Acceleration time with maximum inertia and the above load type is 30 seconds. Safe stall time at 100% voltage is 65 seconds cold, 36 seconds hot. Rotor inertia is 12.06 Lb-Ft Sq (0.51 Kg-meter Sq).

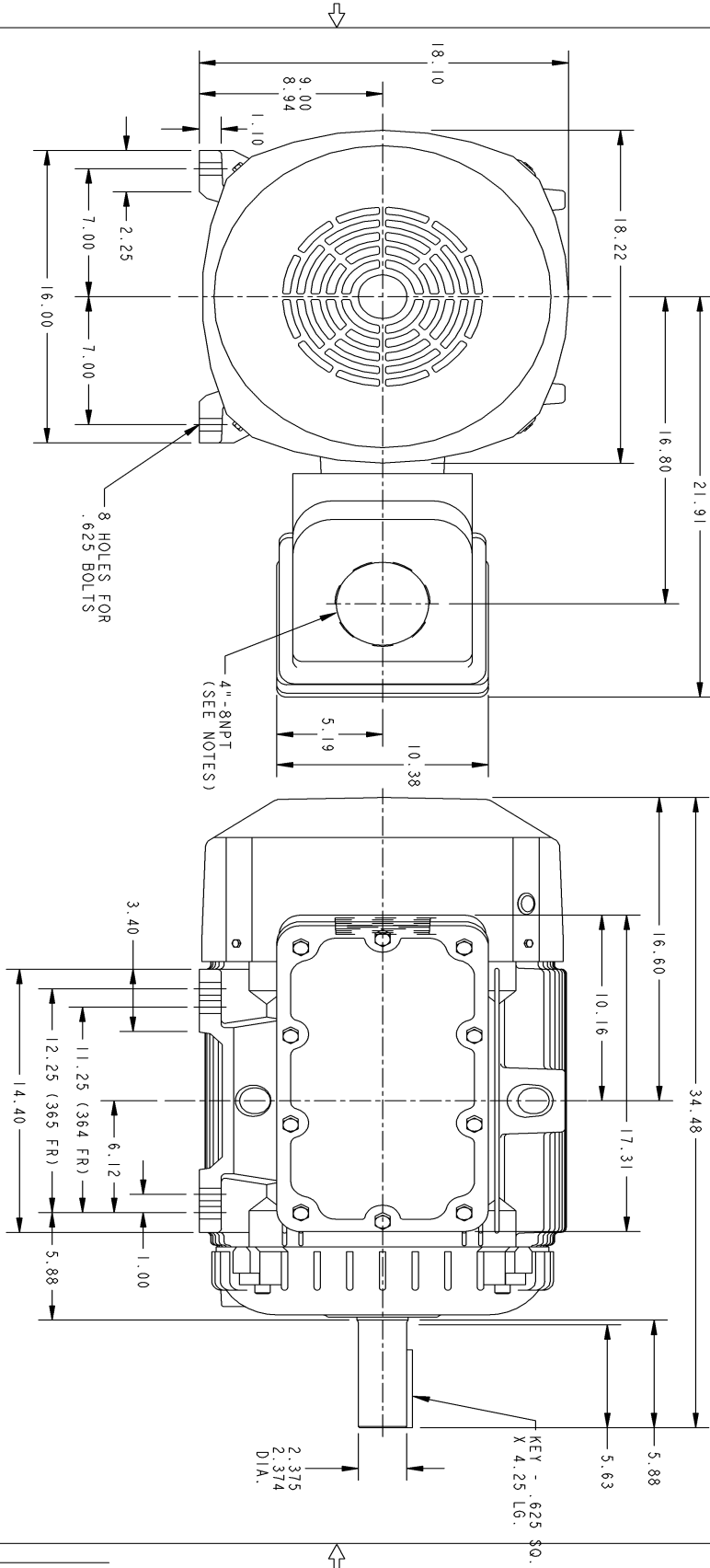
Open Circuit A-C:	0.592	Short Circuit D-C:	0.035
Short Circuit A-C:	0.039	X/R Ratio:	13.337
Stator Slots:	60	Rotor Slots:	50

Speed Torque Current Curve (First Connection, First Speed)

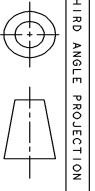


NAME: PT-147 OBJECT: 225B5200AL DATE: 27-Aug-02 14:52:27

Marks:



- NOTES:
1. CONDUIT BOX MAY BE PLACED WITH THE ENTRANCE ON EITHER SIDE OR UP.
 2. F-1 ASM AS SHOWN.
 3. F-2 ASM-COND. BOX ON OPPOSITE SIDE.



THIRD ANGLE PROJECTION

SHEET 8 OF 8
 DWG NO. 225B5200AL
 SH REV

REVISIONS			
REV	DESCRIPTION	DATE	APPROVED

UNLESS OTHERWISE SPECIFIED
 DIMENSIONS ARE IN INCHES
 TOLERANCES ARE:
 2 PL DECIMALS ±
 3 PL DECIMALS ±
 ANGLES ±
 FRACTIONS ±
 MATERIAL: ✓
 APPLIED PRACTICES:

SIGNATURES	DATE
DRAWN: GIKADAM	26-AUG-02
CHECKED: GIKADAM	26-AUG-02
ENGINEER: GIKADAM	26-AUG-02
ISSUED: GIKADAM	26-AUG-02

GE Motors
 Fori Wayne, Indiana

OUTLINE

364-365 "T" XP (920 CU. IN. BOX)
 SIZE FSCM NO. 364-365 "T" XP (920 CU. IN. BOX)
 DWG NO. 225B5200AL
 SCALE .19
 SHEET 1 OF 1

DISTR TO

Marks:

Connection Diagram
GEM2034E-FIG20



Thermostat Connection
3027JE-2

FIG. 2
THERMOSTAT CONN.

