

Product Information Packet

November 7, 2016

Data shown is for the current revision model #. Ensure your nameplate model # matches.

Model Number:	5KS444ATE118A
Catalog Number:	E7503
Instruction Manual:	GEI-M1023
Connection Diagram:	GEM2034E-FIG8
Outline Drawing:	358B6204AB

Accessory Connection Diagrams			
Bearing Thermocouple:	None	Heater:	None
RTD:	None	Thermistor:	None
Thermostat:	None	Winding Thermocouple:	None
Bearing RTD:	None		

Table of Contents	
Specification	01
Performance Characteristics	02
Outline Drawing	03
Connection Drawing(s)	04

Marks:

MODEL NUMBER:	5KS444ATE118A	Estimated Weight:	1550 Lbs
Outline Drawing:	358B6204AB	Time Rating:	CONT
Connection Diagram:	GEM2034E-FIG8	Enclosure:	DP
Instruction Book:	GEI-M1023	Encl Construction:	OPEN
Design Code:	44AD0001A	Ambient Max(°C):	40
Type:	KS	Alt Ambient Max(°C):	--
Frame:	444TS	Insulation Class:	F
Phases:	3	NEMA Design:	A
Poles:	2	Nominal Efficiency:	95 %
Output Power:	200HP 148KW	Guaranteed Efficiency:	94.1
RPM:	3575	3/4 Load Efficiency:	95.7
Voltage:	460	KVA Code:	H
Hertz:	60	Max KVAR:	41.3
Amps - FL:	215	Power Factor:	88
Service Factor:	1.15	Bearing - DE:	6313C3
Alt Service Factor:	--	Bearing - ODE:	6313C3

Enclosure is Dripproof

Stamped Nameplate Notes:**Additional Information:**

2 POLE DP
 LRA AT 460 VOLTS: 1654.4 AMPS
 NO. OF MOTOR LEADS: 6
 CONDUIT BOX VOLUME (IN³): 1240
 CONDUIT BOX MTL: STAMPED STEEL
 GREASE TYPE: CHEVRON SRI-2 POLYUREA GREASE
 NOT USABLE AT 200V
 50 HZ DATA: 200HP, 400V, 259 AMPS AT 1.0SF, 2970 RPM
 SOUND POWER: 95
 DMK, 06/04, UPDATED 4/2005
 INVERTER DUTY PER NEMA MG1 PART 31
 FOR VARIABLE TORQUE LOADS

Performance Characteristics

1st Winding 1st Connection

Design: 44AD0001A

Marks:

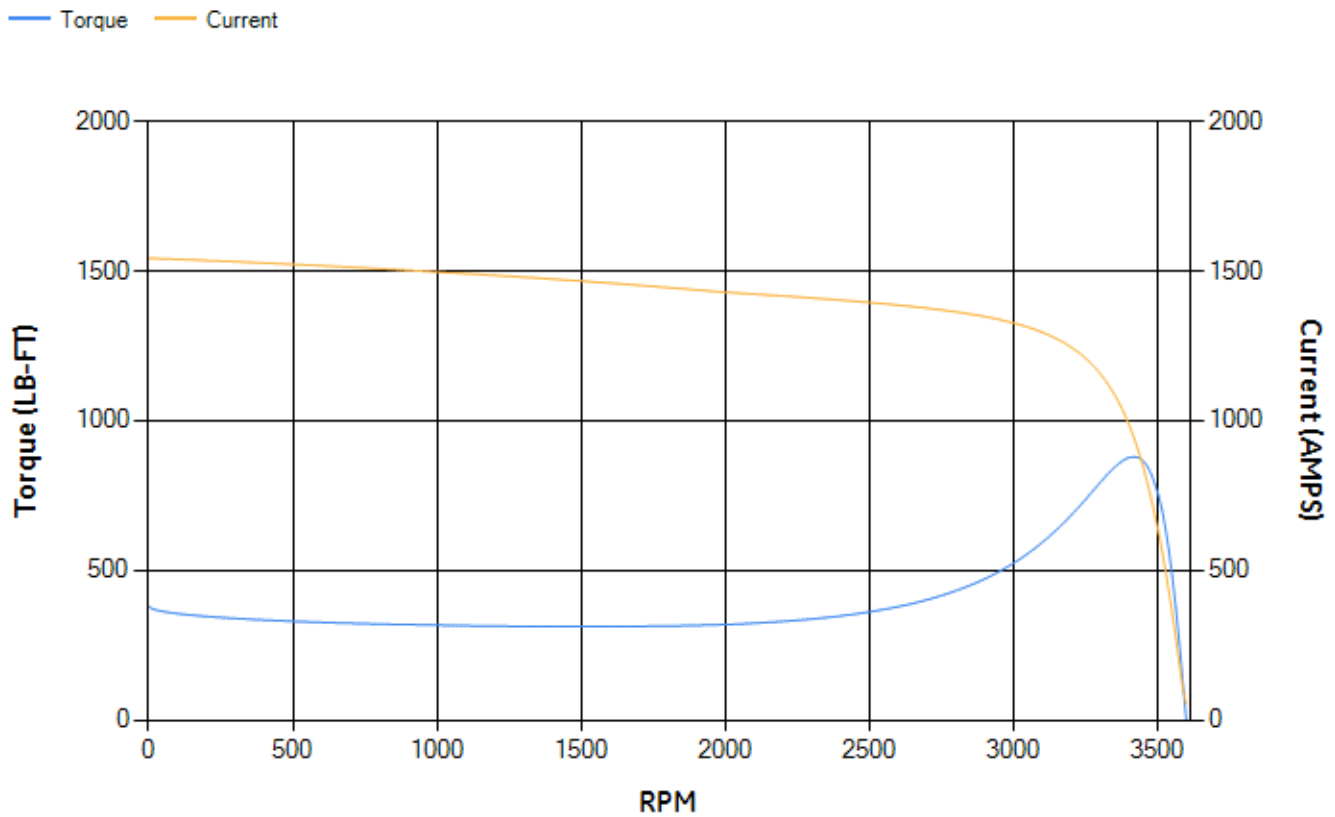
LOAD %	125.0	115.0	100.0	75.0	50.0	25.0	0.0
% EFF	95.46	95.6	95.94	95.75	95.17	92.41	0.00
% PF	91.88	91.84	91.51	89.82	84.74	67.49	6.53
AMPS	266.77	245.2	213.23	163.25	116.06	75.03	52.67

TORQ(FL)#FT	293.78	TORQ(LR)%FL	129.46	TORQ(BD)%FL	298.4
AMPS(LR)	1542.89	PF AT START	0.22		

This motor is capable of two cold or one hot start with a maximum connected load inertia of 785 Lb-Ft Sq (33.05 Kg-meter Sq)at 100% voltage, where the load torque varies with the square of the speed. Acceleration time with maximum inertia and the above load type is 32 seconds. Safe stall time at 100% voltage is 54 seconds cold, 42 seconds hot. Rotor inertia is 26.31 Lb-Ft Sq (1.11 Kg-meter Sq).

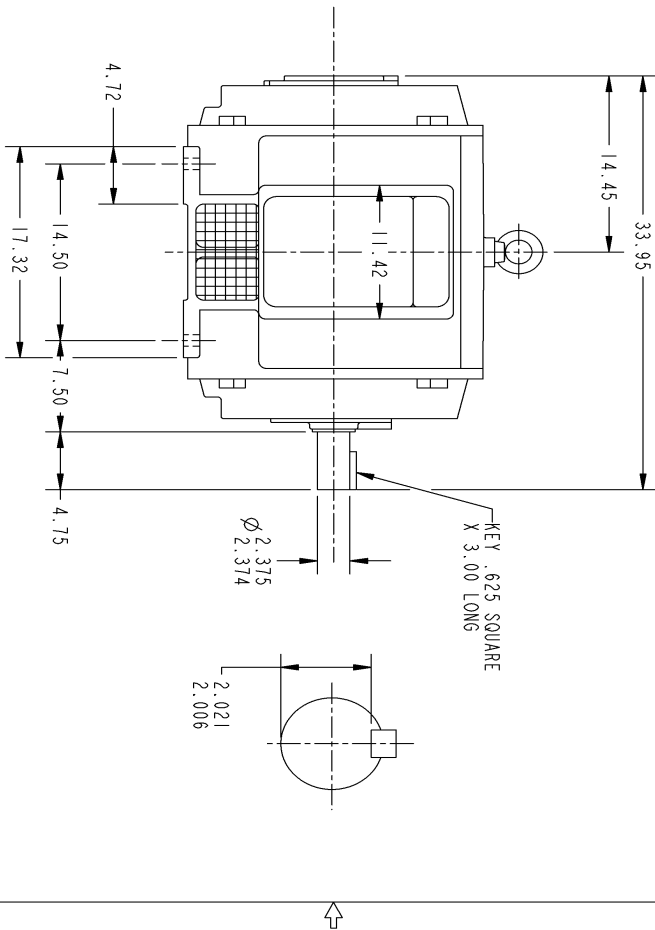
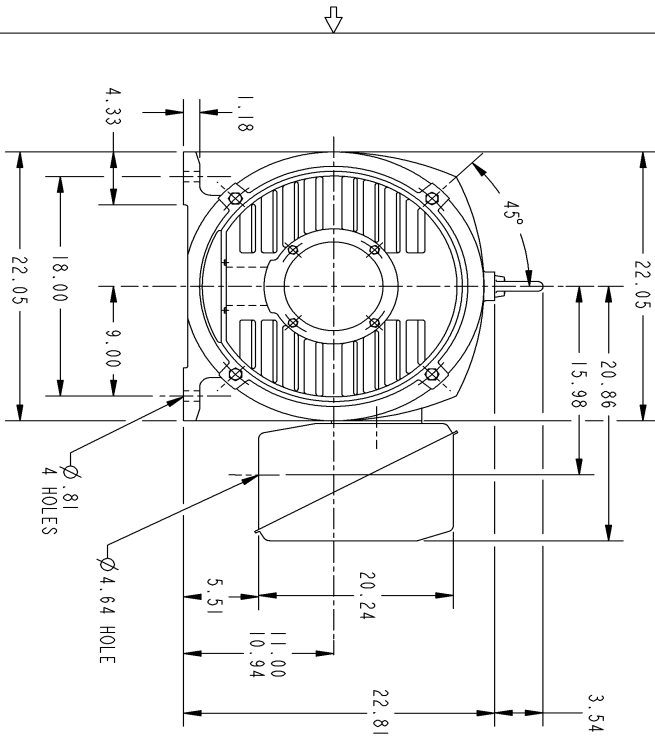
Open Circuit A-C:	1.484	Short Circuit D-C:	0.036
Short Circuit A-C:	0.048	X/R Ratio:	13.636
Stator Slots:	48	Rotor Slots:	40

Speed Torque Current Curve (First Connection, First Speed)



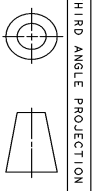
NAME:500903578 OBJECT:358B6204AB DATE:04-May-07 11:16:29

Marks:



NOTES :

1. CONDUIT BOX MAY BE PLACED WITH THE ENTRANCE DOWN, UP OR ON EITHER SIDE.
2. F-1 ASM AS SHOWN.
3. F-2 ASM - HAS CONDUIT BOX ON OPPOSITE SIDE.



THIRD ANGLE PROJECTION

GE PROPRIETARY AND CONFIDENTIAL INFORMATION
 This document is the property of General Electric Company (GE) and contains proprietary information of GE. This document is loaned on the express condition that neither it nor the information contained therein shall be disclosed to any other person or organization without the prior written approval of GE. The information shall be used only for the specific purpose for which it is loaned. This document shall be returned to GE upon its request. This document is not to be copied, reproduced, or distributed without the express written approval of GE. All rights reserved.

REV.	DESCRIPTION	DATE	APPROVED
1	ISAAC 07-0770	05/02/07	R. KOHNE

FOR ADDITIONAL INFO REFER TO:		SIGNATURES		DATE	
APPLIED PRACTICES	MODEL				
DIMENSIONS ARE IN INCHES	REVIEW				
TOLERANCE ON:	DESIGNED				
1 PL DECIMALS ± .	ENGINEER				
2 PL DECIMALS ± .					
3 PL DECIMALS ± .					
FRACTIONS ± .					
FINISH	QUALITY				
	ISSUED				
MATERIAL	SOLID MODEL	MODEL NAME			

GE Industrial Systems GENERAL ELECTRIC COMPANY

TITLE
444TS - CAST IRON ODP FOOTED

SIZE DRAWING: **B**
 SCALE: DRAWING SCALE

358B6204AB REV 1

SHEET 1 of 1

Marks:

Connection Diagram
GEM2034E-FIG8

