

# Product Information Packet

January 13, 2017

Data shown is for the current revision model #. Ensure your nameplate model # matches.

<b>Model Number:</b>	<b>5KS254SAE5026A</b>
<b>Catalog Number:</b>	<b>V904</b>
<b>Instruction Manual:</b>	GEK-95351
<b>Connection Diagram:</b>	GEM2034E-FIG3
<b>Outline Drawing:</b>	4002B5825PMP5317

Accessory Connection Diagrams			
<b>Bearing Thermocouple:</b>	None	<b>Heater:</b>	3027JE-1
<b>RTD:</b>	None	<b>Thermistor:</b>	None
<b>Thermostat:</b>	None	<b>Winding Thermocouple:</b>	None
<b>Bearing RTD:</b>	None		

Table of Contents	
Specification	01
Performance Characteristics	02
Outline Drawing	03
Connection Drawing(s)	04



**Marks:**

<b>MODEL NUMBER:</b>	<b>5KS254SAE5026A</b>	<b>Estimated Weight:</b>	315 Lbs
<b>Outline Drawing:</b>	4002B5825PMP5317	<b>Time Rating:</b>	CONT
<b>Connection Diagram:</b>	GEM2034E-FIG3	<b>Enclosure:</b>	TEFC
<b>Instruction Book:</b>	GEK-95351	<b>Encl Construction:</b>	SD
<b>Design Code:</b>	25BD0090A	<b>Ambient Max(°C):</b>	40
<b>Type:</b>	KS	<b>Alt Ambient Max(°C):</b>	65
<b>Frame:</b>	L254TP10	<b>Insulation Class:</b>	H
<b>Phases:</b>	3	<b>NEMA Design:</b>	B
<b>Poles:</b>	2	<b>Nominal Efficiency:</b>	91 %
<b>Output Power:</b>	15HP 11.1KW	<b>Guaranteed Efficiency:</b>	89.5
<b>RPM:</b>	3550	<b>3/4 Load Efficiency:</b>	91.8
<b>Voltage:</b>	230/460	<b>KVA Code:</b>	G
<b>Hertz:</b>	60	<b>Max KVAR:</b>	2.9
<b>Amps - FL:</b>	34.6/17.3	<b>Power Factor:</b>	89.0
<b>Service Factor:</b>	1.15	<b>Bearing - DE:</b>	7309
<b>Alt Service Factor:</b>	1.00	<b>Bearing - ODE:</b>	6209-2ZC3

**Enclosure is Totally Enclosed Fan-Cooled**

**Stamped Nameplate Notes:**

PREMIUM EFFICIENT MOTOR  
 ROT CCW FACING ODE LEAD/PH SEQUENCE 1-2-3/1-2-3  
 HTR LDS H 115V 60W  
 SEVERE DUTY  
 INVERTER DUTY PER NEMA MG1 PART 31  
 ALTERNATE RATING FOR PWM CONTROL:  
 1.0 SF VAR TORQUE RANGE 10-60 HZ  
 50HZ DATA:10 HP 190/380 V WITH FLA-28.0/14.0 A

**Additional Information:**

2P - TP EXTN  
 C/BOX 137 CU IN-1.25 NPT  
 HEATER LEADS EXIT WITH MOTOR LEADS  
 E/SHLD GROUND STUD MTD ON DE C/BOX SIDE  
 RCF 5000 CPM, STATIC DEFLECTION .0014 INCHES &  
 CENTER OF GRAVITY 10.75 INCHES  
 HOLLOW SHAFT HIGH THRUST  
 LEADS NUMBERED 1,2,3 - CCW ROTN FROM ODE  
 OIL RESISTANT SLEEVING ON LEADS  
 BEARING LIFE 8760 HOURS AT 2070 LB THRUST  
 COUPLING NOT INCLUDED IN BOM, WILL BE  
 ORDERED SEPERATELY

**Performance Characteristics**

1st Winding 1st Connection

**Design: 25BD0090A**

**Marks:**

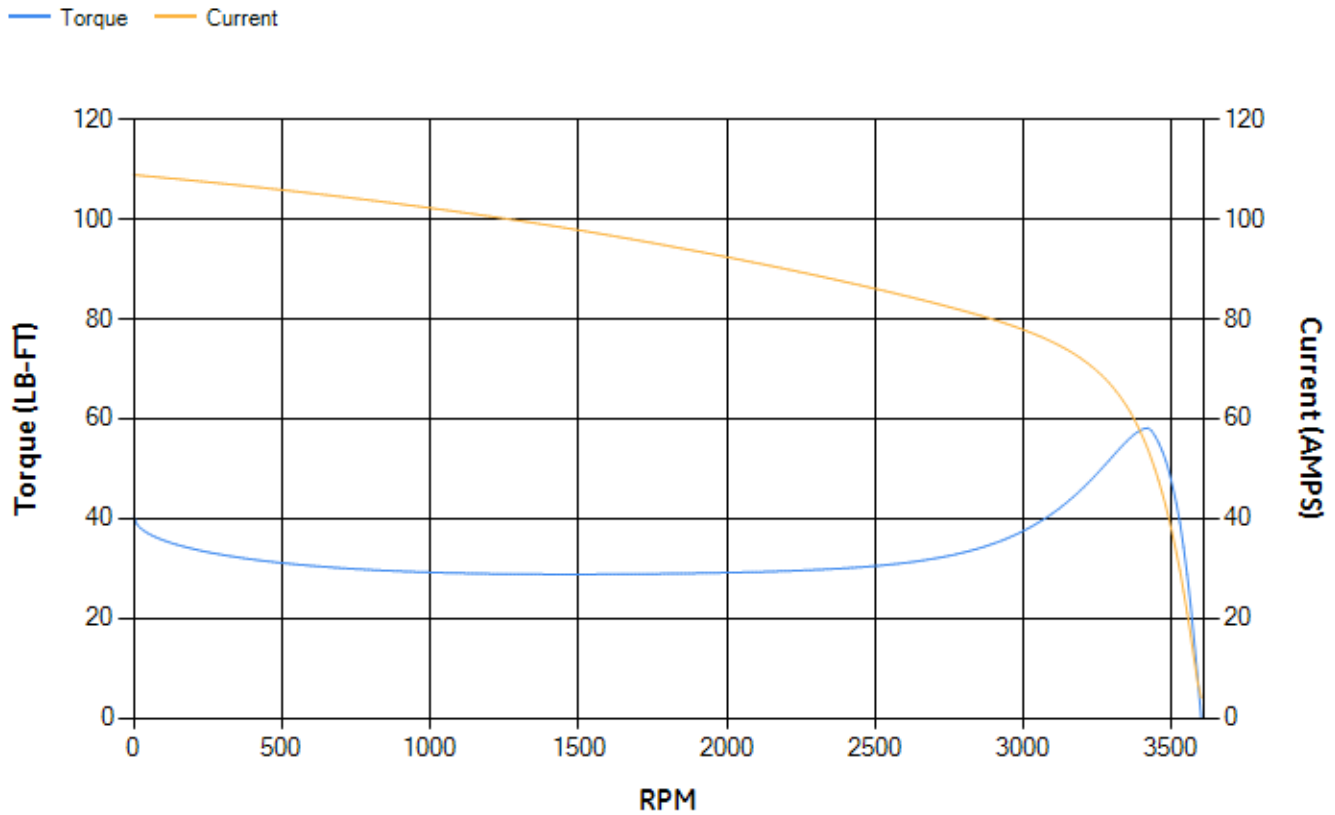
LOAD %	125.0	115.0	100.0	75.0	50.0	25.0	0.0
% EFF	89.46	90.13	91.15	91.83	91.73	88.48	0.00
% PF	88.61	89.02	89.24	88.25	83.82	67.77	9.58
AMPS	22.14	20.12	17.26	12.99	9.13	5.85	4.01

TORQ(FL)#FT	22.19	TORQ(LR)%FL	182.51	TORQ(BD)%FL	260.79
AMPS(LR)	108.87	PF AT START	0.3		

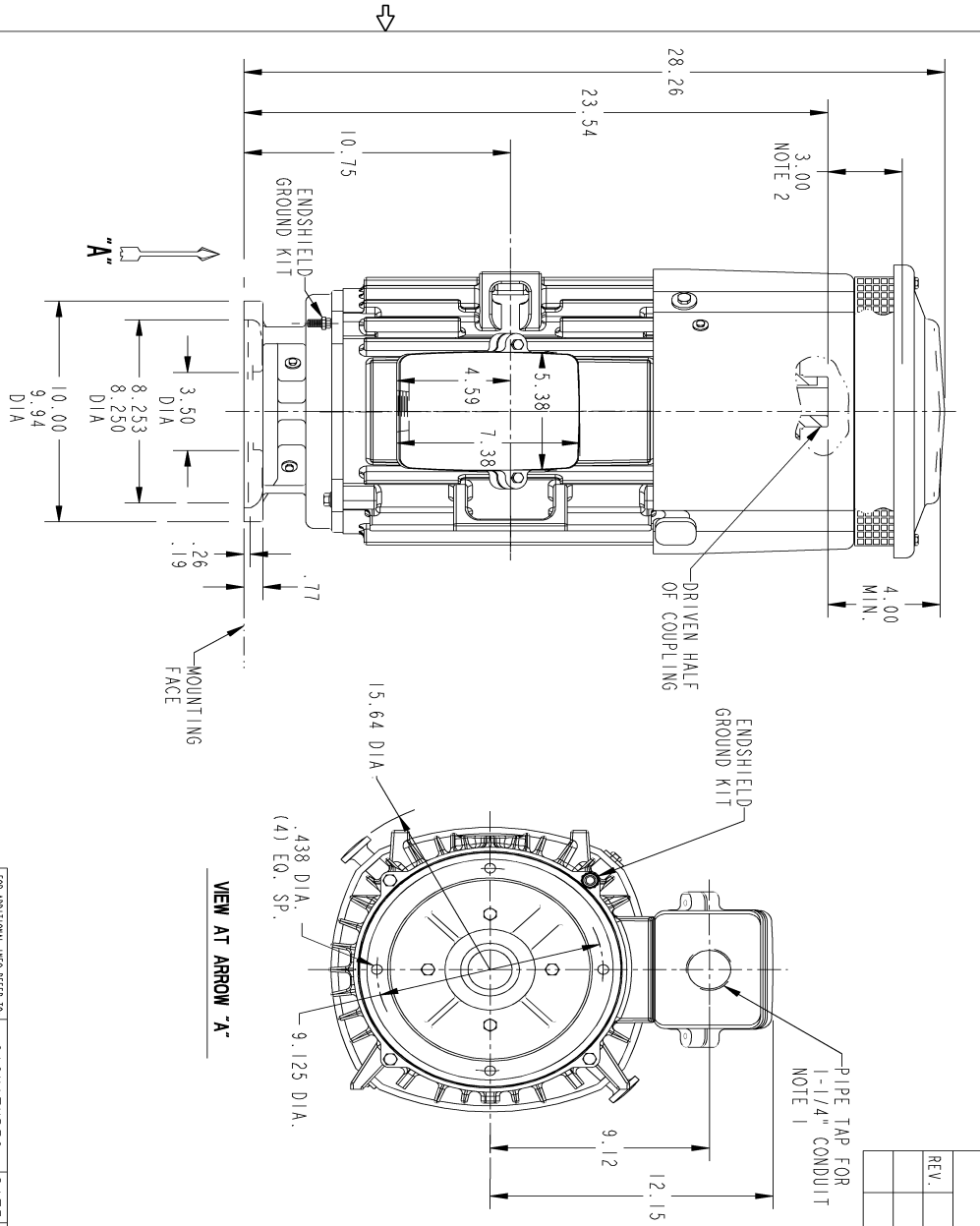
This motor is capable of two cold or one hot start with a maximum connected load inertia of 109 Lb-Ft Sq (4.59 Kg-meter Sq) at 100% voltage, where the load torque varies with the square of the speed. Acceleration time with maximum inertia and the above load type is 50 seconds. Safe stall time at 100% voltage is 94 seconds cold, 60 seconds hot. Rotor inertia is 1.05 Lb-Ft Sq (0.04 Kg-meter Sq).

Open Circuit A-C:	0.844	Short Circuit D-C:	0.013
Short Circuit A-C:	0.031	X/R Ratio:	4.8
Stator Slots:	36	Rotor Slots:	26

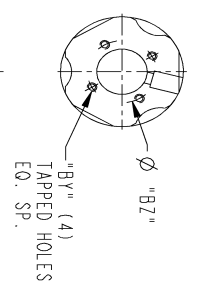
**Speed Torque Current Curve (First Connection, First Speed)**



Marks:



REV.	DESCRIPTION	DATE	APPROVED



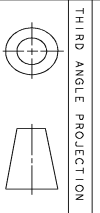
DRIVEN HALF OF COUPLING

COUPLING KIT	RPM	"BY"	"BZ"	BORE DIA.	"BX"	KEYWAY "W"	"D"
GR.1	GR.8	1/4-20	1.750	1.252	1.252	.375	.188
GR.2	GR.9	1/4-20	1.750	1.252	1.252	.375	.188
GR.3	GR.10	1/4-20	1.750	1.252	1.252	.375	.188
GR.4	GR.11	#10-32	1.375	.877	.877	.250	.125
GR.5	GR.12	#10-32	1.375	.876	.876	.250	.125
GR.7	GR.14	1/4-20	1.750	1.252	1.252	.375	.188
GR.1	GR.8	1/4-20	1.750	1.252	1.252	.375	.188
GR.2	GR.9	1/4-20	1.750	1.252	1.252	.375	.188
GR.3	GR.10	1/4-20	1.750	1.252	1.252	.375	.188
GR.4	GR.11	#10-32	1.375	.877	.877	.250	.125
GR.5	GR.12	#10-32	1.375	.876	.876	.250	.125
GR.7	GR.14	1/4-20	1.750	1.252	1.252	.375	.188

4002B5528AB BOLTED OR SELF-RELEASE  
4002B5528AA NON-REVERSE

**GE Motors** GENERAL ELECTRIC COMPANY  
INDUCTION MOTOR OUTLINE  
HOLLOW SHAFT - HIGH THRUST (BD-10) EXT. ON DE SIDE  
L250T10 TFC. P BASE VERTICAL

SIZE DRAWING 4002B5825PMP5317 0  
SCALE: B



NOTE 1: CONDUIT BOX MAY BE ASSEMBLED WITH ENTRANCE UP, DOWN, OR TO EITHER SIDE.  
NOTE 2: THE TOTAL HEIGHT OF PUMP SHAFT & LOCKING NUT ABOVE TOP OF COUPLING, MUST NOT EXCEED THIS DIMENSION.

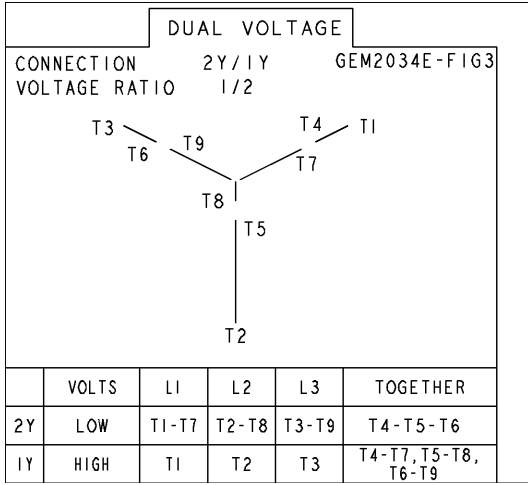
Part must conform to SI 900000  
Sect. 4, Assembly Procedure

FOR ADDITIONAL INFO REFER TO:	SIGNATURES	DATE
DETAIL	KARTHIK	05/17/2013
ENGR	KARTHIK	05/17/2013
ISSUED	KARTHIK	05/17/2013

SHEET 1 OF 1

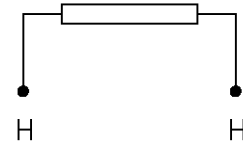
Marks:

**Connection Diagram**  
**GEM2034E-FIG3**



**Heater Connection**  
**3027JE-1**

FIG. 1  
HEATER CONN.



CONTROL	L1	L2
VOLTAGE ONLY	H	H