

Product Information Packet

January 12, 2017

Data shown is for the current revision model #. Ensure your nameplate model # matches.

Model Number:	5KS509SAA348B
Catalog Number:	Q581
Instruction Manual:	GEI-56128
Connection Diagram:	GEM2034E-FIG20
Outline Drawing:	239C6A00HG

Accessory Connection Diagrams			
Bearing Thermocouple:	None	Heater:	3027JE-1C
RTD:	None	Thermistor:	None
Thermostat:	None	Winding Thermocouple:	None
Bearing RTD:	235A3027NA		

Table of Contents

Specification	01
Performance Characteristics	02
Outline Drawing	03
Connection Drawing(s)	04
Spare parts	05



Marks:

MODEL NUMBER:	5KS509SAA348B	Estimated Weight:	4563 Lbs
Outline Drawing:	239C6A00HG	Time Rating:	CONT
Connection Diagram:	GEM2034E-FIG20	Enclosure:	TEFC
Instruction Book:	GEI-56128	Encl Construction:	SD
Design Code:	50BD3240B	Ambient Max(°C):	40
Type:	KS	Alt Ambient Max(°C):	--
Frame:	509LL	Insulation Class:	F
Phases:	3	NEMA Design:	B
Poles:	6	Nominal Efficiency:	95.8 %
Output Power:	300HP 222KW	Guaranteed Efficiency:	95.0
RPM:	1185	3/4 Load Efficiency:	95.9
Voltage:	575	KVA Code:	G
Hertz:	60	Max KVAR:	91.0
Amps - FL:	279.0	Power Factor:	84.0
Service Factor:	1.15	Bearing - DE:	6320ZC3
Alt Service Factor:	--	Bearing - ODE:	6315ZC3

Enclosure is Totally Enclosed Fan-Cooled

Stamped Nameplate Notes:

HTR LDS HE1-HE2 115V 350W
 INVERTER DUTY PER NEMA MG1 PART 31
 ALTERNATE RATING FOR PWM CONTROL:1.0SF 40C AMBIENT
 VAR TORQUE RANGE 0-60 HZ
 FOR DIRECT COUPLED LOAD ONLY

Additional Information:

6P - LL EXTN - SPLIT LEAD
 1260 CU IN - 2(4.00" NPT)
 C/B GRD PLATE
 115V HTR LDS TO AUX BOX OPP MAIN CONDUIT BOX
 SPACE HEATER CAUTION NAMEPLATE
 NEMA TYPE GRD PAD
 F1 MOUNTING
 PROVISION FOR BTD ON BOTH ENDS PLUGGED

Performance Characteristics

1st Winding 1st Connection

Design: 50BD3240B

Marks:

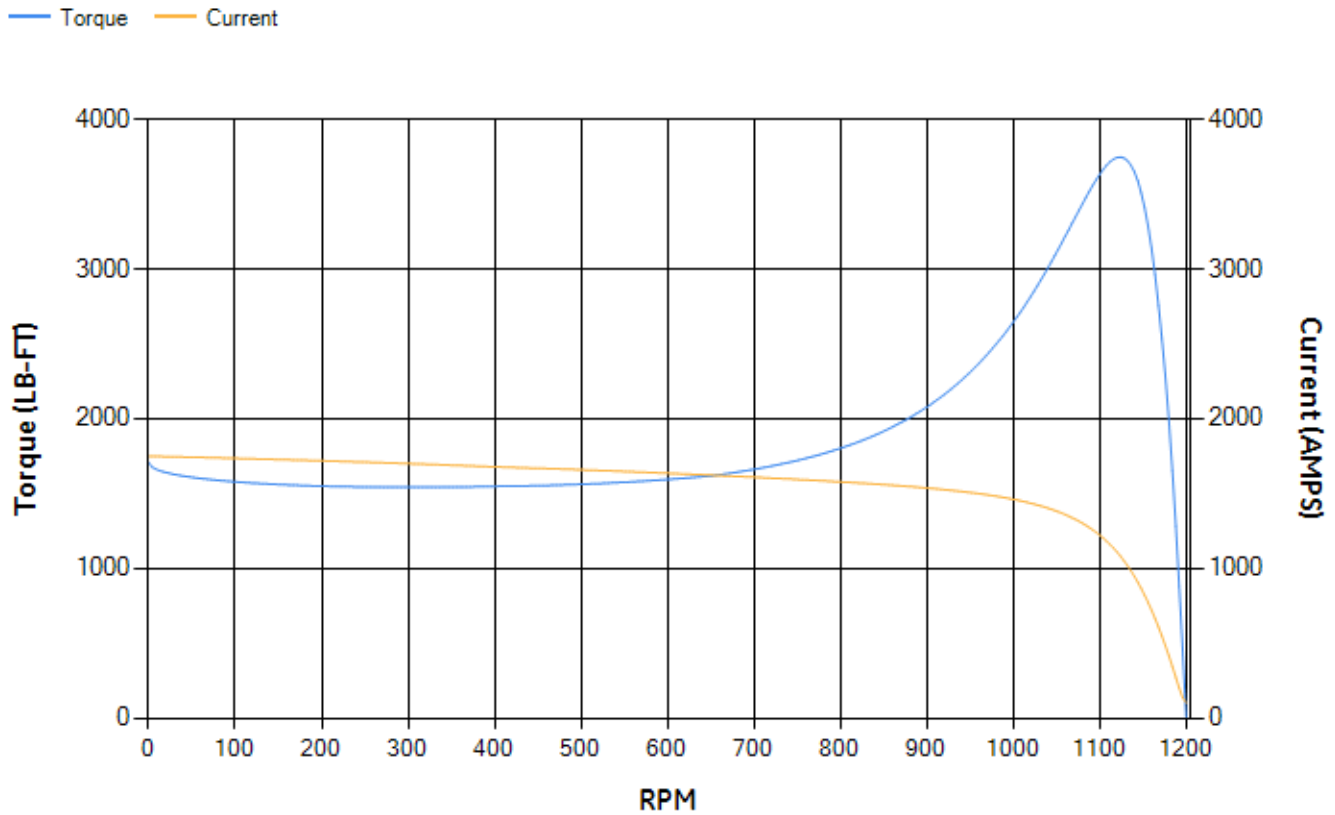
LOAD %	125.0	115.0	100.0	75.0	50.0	25.0	0.0
% EFF	95.1	95.33	95.81	95.87	95.62	93.57	0.00
% PF	85.29	84.95	83.94	80.22	71.23	49.2	3.25
AMPS	346.17	319	279.44	219.07	164.89	121.96	101.56

TORQ(FL)#FT	1327.45	TORQ(LR)%FL	128.53	TORQ(BD)%FL	281.63
AMPS(LR)	1749.86	PF AT START	0.24		

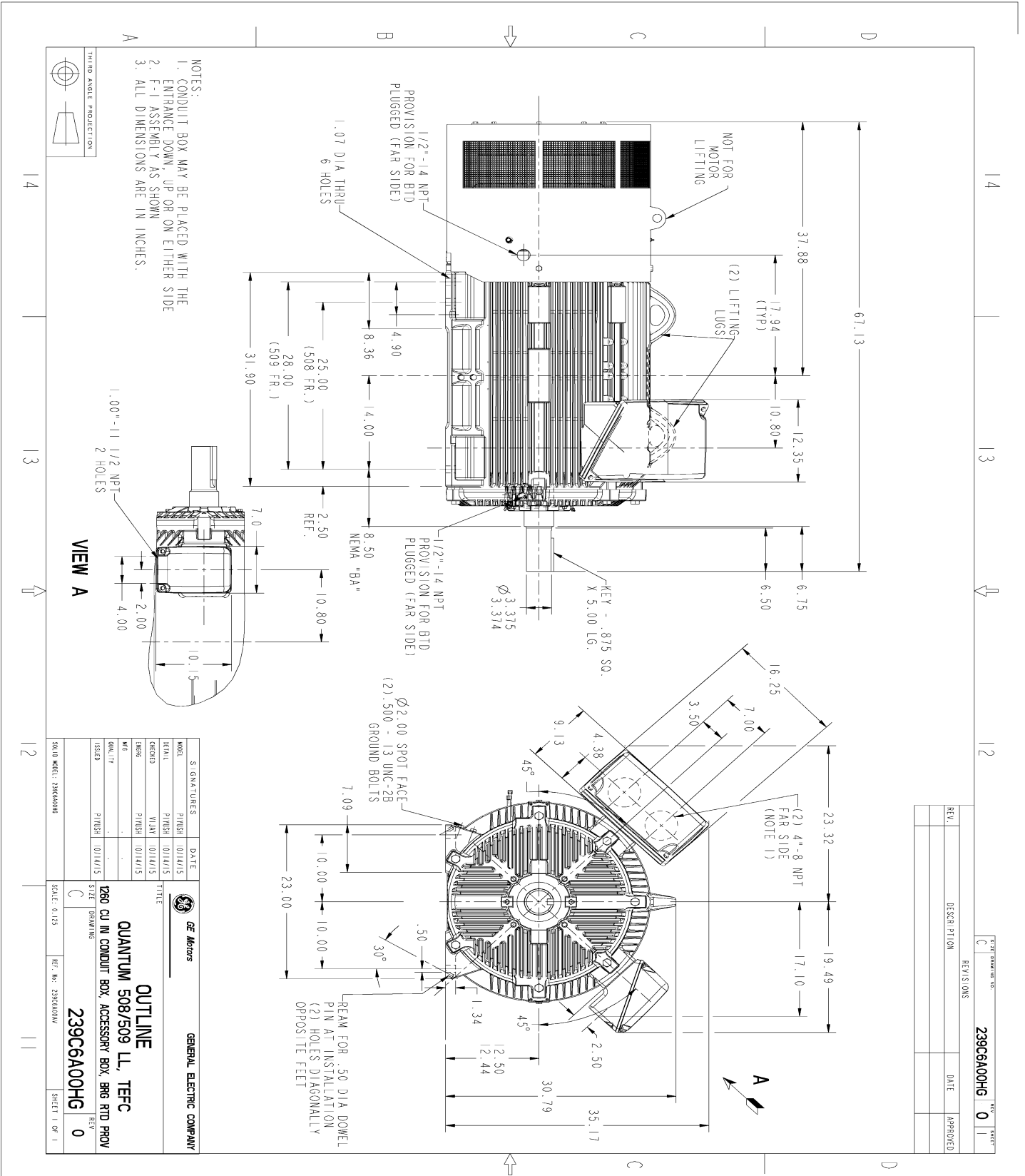
This motor is capable of two cold or one hot start with a maximum connected load inertia of 13277 Lb-Ft Sq (558.96 Kg-meter Sq)at 100% voltage, where the load torque varies with the square of the speed. Acceleration time with maximum inertia and the above load type is 35 seconds. Safe stall time at 100% voltage is 74 seconds cold, 42 seconds hot. Rotor inertia is 176.1 Lb-Ft Sq (7.41 Kg-meter Sq).

Open Circuit A-C:	0.627	Short Circuit D-C:	0.04
Short Circuit A-C:	0.035	X/R Ratio:	15.031
Stator Slots:	72	Rotor Slots:	58

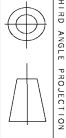
Speed Torque Current Curve (First Connection, First Speed)



Marks:



NOTES:
 1. CONDUIT BOX MAY BE PLACED WITH THE ENTRANCE DOWN, UP OR ON EITHER SIDE
 2. F-1 ASSEMBLY AS SHOWN
 3. ALL DIMENSIONS ARE IN INCHES.



THIRD ANGLE PROJECTION

VIEW A
 1.00" - 11 1/2 NPT
 2 HOLES

REV.	DESCRIPTION	DATE	APPROVED

SIGNATURES	DATE	 GENERAL ELECTRIC COMPANY OUTLINE QUANTUM 508/509 LL, TEFC D80 CU IN CONDUIT BOX, ACCESSORY BOX, BRG RTD PROV
MODEL	01/14/15	
SCALE	01/14/15	
CHKD	01/14/15	
DRWG	01/14/15	TITLE 239C6A00HG
DESIGN	01/14/15	SIZE DRAWING
CHKD	01/14/15	SCALE: 0.125
DESIGN	01/14/15	REF. NO. 239C6A00
CHKD	01/14/15	SHEET 1 OF 1
DESIGN	01/14/15	REV 0

Marks:

Connection Diagram
GEM2034E-FIG20



Heater Connection
3027JE-1C



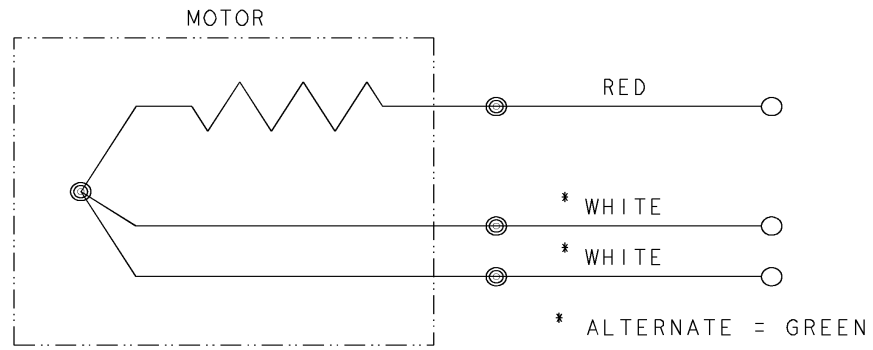


REV SH 1 1	THIRD ANGLE PROJECTION		REVISIONS		
		REV	DESCRIPTION	DATE	APPROVED
		1	ISAAC #12-1124	HARI	11/19/12

SIZE A
 DWG NO 235A3027NA

CONFIDENTIAL AND PROPRIETARY
 This document is the property of General Electric Company and contains proprietary and confidential information of the Motor Business Group (MBG). The document is loaned on the express conditions that neither it nor the information contained therein shall be disclosed to others without the express consent of MBG and that the information shall be used by the recipient only as approved expressly by MBG. Also, the document shall be returned to MBG upon its request.

BEARING RTDS



UNLESS OTHERWISE SPECIFIED	SIGNATURES	DATE
DIMENSIONS ARE IN INCHES	DRAWN D.E. BAIR	12/16/92
TOLERANCES ON:	CHECKED D.E. BAIR	12/16/92
2 PL DECIMALS ±	ENGRG K. DESAI	12/16/92
3 PL DECIMALS ±	ISSUED D.E. BAIR	12/16/92
ANGLES ±		
FRACTIONS ±		
MATERIAL:		
APPLIED PRACTICES:	CAD NO. F500:235A3027NA	

GE Motors

Fort Wayne, Indiana

CONNECTION DIAGRAM

BEARING RTDS

SIZE A	FSCM NO	DWG NO 235A3027NA
SCALE 1/1	SHEET 1 OF 1	

DISTR TO

End shield Assembly		
Part Description	DE Side Part#	ODE Side Part#
End Shield	115E5202AC1	115E5200AD1
Bearing	235A2523AF03	235A2513AG01
Slinger/Inproseal	149C4399G11	149C4399G10

Fan & Fan Cover Assembly	
Part Description	Part#
Fan	148C8074AA1
Fan Cover	119D3661AA1

Conduit & Accessories Box Assembly	
Part Description	Part#
Conduit Box	179B9058G03

Mechanical Accessories	
Part Description	Part#
Brake	
Tachometer	