

Product Information Packet

May 26, 2017

Data shown is for the current revision model #. Ensure your nameplate model # matches.

Model Number:	5KAF449SAA222A
Catalog Number:	M9325
Instruction Manual:	GEI-56128
Connection Diagram:	GEM2034E-FIG20
Outline Drawing:	239C7800AB

Accessory Connection Diagrams

Bearing Thermocouple:	None	Heater:	None
RTD:	None	Thermistor:	None
Thermostat:	None	Winding Thermocouple:	None
Bearing RTD:	None		

Table of Contents

Specification	01
Performance Characteristics	02
Outline Drawing	03
Connection Drawing(s)	04



Marks:

MODEL NUMBER:	5KAF449SAA222A		
Outline Drawing:	239C7800AB	Service Factor:	1.00
Connection Diagram:	GEM2034E-FIG20	Alt Service Factor:	1.00
Instruction Book:	GEI-56128	ASD Type:	
Design Code:	49BD1081A	Time Rating:	CONT
Type:	KAF	Enclosure:	TEBC
Frame:	449T	Encl Construction:	A\$D
Phases:	3	Ambient Max (°C):	40
Poles:	4	Alt Ambient Max(°C):	65
Output Power:	250HP 185KW	Insulation Class:	H
Output Power (2):		NEMA Design:	--
Output Power (3):		Nominal Efficiency:	96.2 %
RPM:	1790	Guaranteed Efficiency:	95.4 %
RPM (2):		3/4 Load Efficiency:	96.8 %
RPM (3):		KVA Code:	H
Voltage:	460	Max KVAR:	62.7
Voltage (2):		Power Factor:	88.5
Voltage (3):		Service Factor SINE:	
Hertz:	60	Service Factor ASD:	
Hertz – 2:		Min Supply Wires:	75 C
Hertz – 3:		IP:	55
Amps – FL:	275.0	Vibration Limit:	--
Amps – FL- 2:		Bearing Lubrication:	MOBIL POLYREX EM
Amps - FL- 3:		Bearing - DE:	6318ZC3
Speed Range RPM:	-	Bearing - ODE:	6318ZC3-VL0241
Const HP RPM:	-	Estimated Weight:	2520 Lbs

Stamped Nameplate Notes:

ALTERNATE RATING INVERTER DUTY 1.0 SF 40C AMBIENT
 SUITABLE FOR CONSTANT TORQUE;PWM OPERATION;0-60HZ
 FOR DIRECT COUPLED LOAD ONLY
 THERMOSTAT LEADS PC-PC TRIP

Additional Information:

4P - T EXTN - SPLIT LEAD
 1260 CU IN - 2(4.00" NPT)
 C/B GRD PLATE
 E/S GROUND BOLT MTD ON DE C/BOX SIDE NEAR FOOT
 OIL RESISTANT SLEEVING ON LEADS
 TACH PROVISION MOTOR
 N.C. TRIP TSTAT LDS TO MAIN CONDUIT BOX
 PAINTED ODE ACCESSORY RABBET

SHAFT GROUND RING #235A4970AG8 MOUNTED ON
DE BEARING CAP
BLOWER MOTOR 208-230/460V,6.2-5.8/2.9AMPS,2HP
BLOWER MOTOR 60/50HZ,1725/1425RPM

Performance Characteristics

1st Winding 1st Connection

Design: 49BD1081A

Marks:

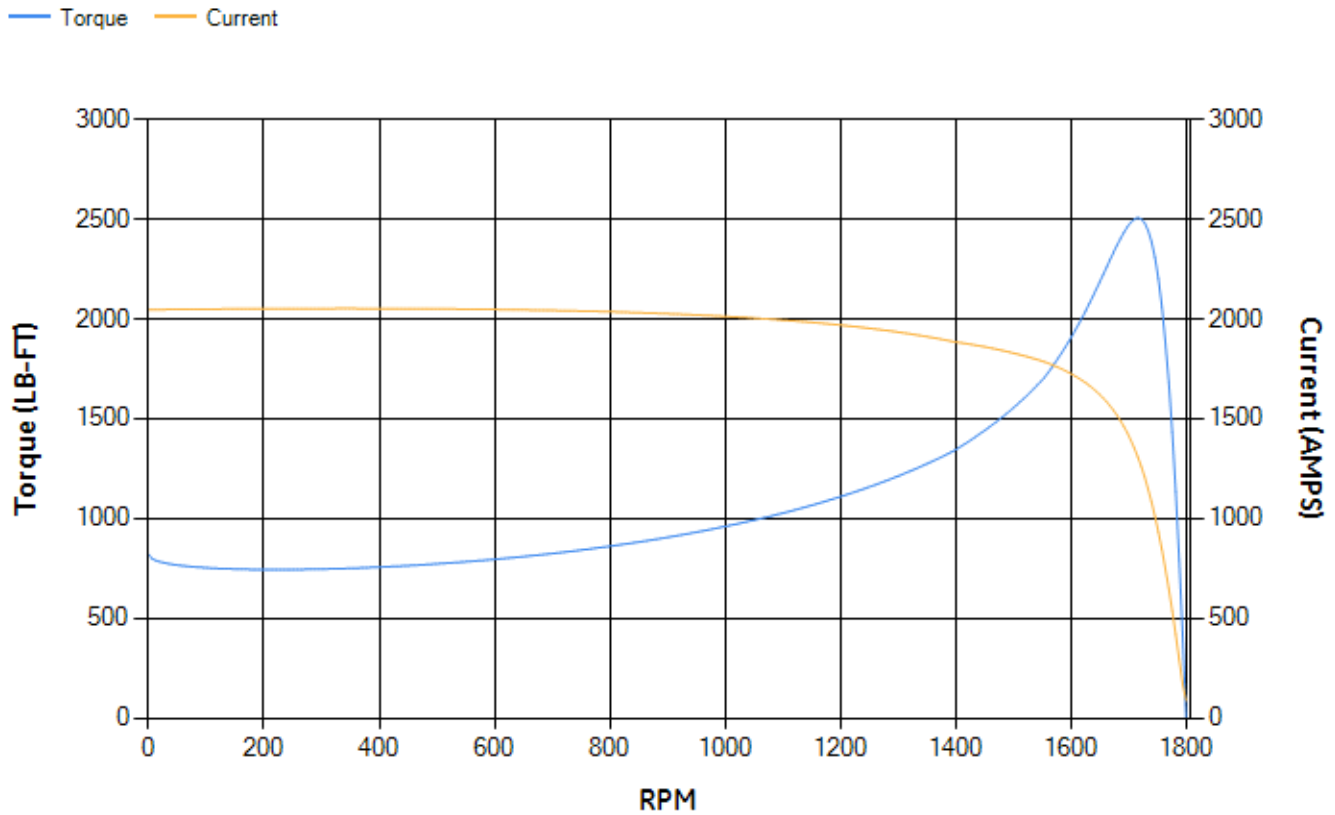
LOAD %	125.0	115.0	100.0	75.0	50.0	25.0	0.0
% EFF	96.03	96.22	96.68	96.77	96.71	95.4	0.00
% PF	89.79	89.46	88.58	85.46	77.65	56.03	2.63
AMPS	339.2	312.61	273.24	212.2	155.8	109.43	87.13

TORQ(FL)#FT	734.28	TORQ(LR)%FL	111.57	TORQ(BD)%FL	340.73
AMPS(LR)	2046.3	PF AT START	0.21		

This motor is capable of two cold or one hot start with a maximum connected load inertia of 6140 Lb-Ft Sq (258.49 Kg-meter Sq)at 100% voltage, where the load torque varies with the square of the speed. Acceleration time with maximum inertia and the above load type is 43 seconds. Safe stall time at 100% voltage is 100 seconds cold, 51 seconds hot. Rotor inertia is 82.15 Lb-Ft Sq (3.46 Kg-meter Sq).

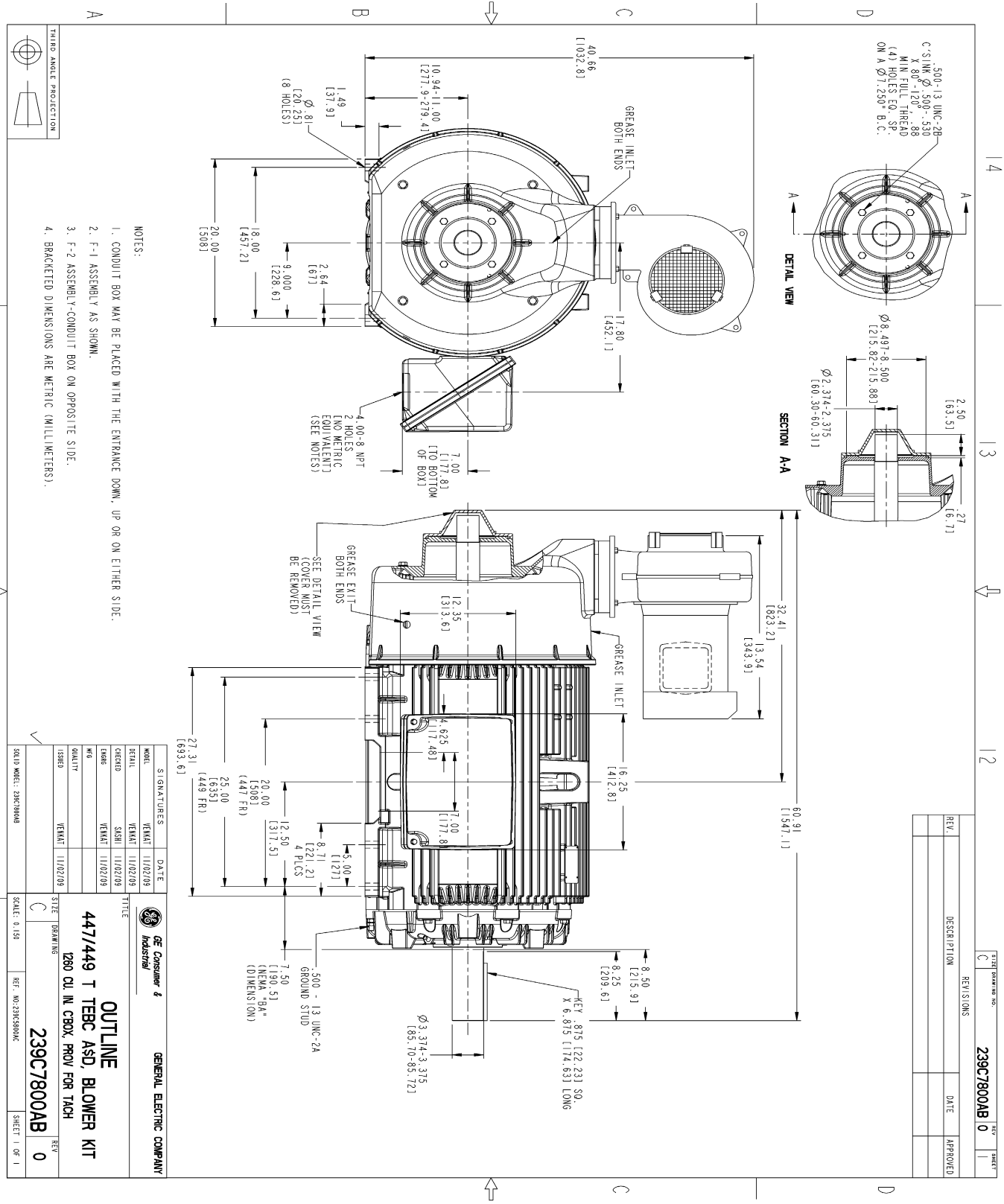
Open Circuit A-C:	1.162	Short Circuit D-C:	0.029
Short Circuit A-C:	0.045	X/R Ratio:	10.942
Stator Slots:	72	Rotor Slots:	58

Speed Torque Current Curve (First Connection, First Speed)



NAME:120004637 OBJECT:239C7800AB DATE:01-Dec-09 12:52:32

Marks:



- NOTES:
1. CONDUIT BOX MAY BE PLACED WITH THE ENTRANCE DOWN, UP OR ON EITHER SIDE.
 2. F-1 ASSEMBLY AS SHOWN.
 3. F-2 ASSEMBLY-CONDUIT BOX ON OPPOSITE SIDE.
 4. BRACKETED DIMENSIONS ARE METRIC (MILLIMETERS).

REV.	DESCRIPTION	DATE	APPROVED

SIGNATURES	DATE
DESIGNED BY: [Signature]	11/02/09
CHECKED BY: [Signature]	11/02/09
ISSUED BY: [Signature]	11/02/09

MODEL: 239C7800AB	DATE: 11/02/09
REVISION: 0	DATE: 11/02/09
ISSUE: 0	DATE: 11/02/09

SCALE: 0.150	REF. NO: 239C7800AB
SHEET 1 OF 1	

GE Consumer & Industrial

GENERAL ELECTRIC COMPANY

OUTLINE

447/449 T TERC ASD, BLOWER KIT

1280 CU. IN. CBX, PROV FOR TACH

239C7800AB

REV: 0

Marks:

Connection Diagram
GEM2034E-FIG20

