

Product Information Packet

November 8, 2016

Data shown is for the current revision model #. Ensure your nameplate model # matches.

Model Number:	5KS445SAA118D12
Catalog Number:	M9512
Instruction Manual:	GEI-56128
Connection Diagram:	GEM2034E-FIG7
Outline Drawing:	239C6600AB

Accessory Connection Diagrams			
Bearing Thermocouple:	None	Heater:	None
RTD:	None	Thermistor:	None
Thermostat:	None	Winding Thermocouple:	None
Bearing RTD:	None		

Table of Contents

Specification	01
Performance Characteristics	02
Outline Drawing	03
Connection Drawing(s)	04
Spare parts	05



Marks:

MODEL NUMBER:	5KS445SAA118D12	Estimated Weight:	1990 Lbs
Outline Drawing:	239C6600AB	Time Rating:	CONT
Connection Diagram:	GEM2034E-FIG7	Enclosure:	TEFC
Instruction Book:	GEI-56128	Encl Construction:	X\$D
Design Code:	44BD0136A	Ambient Max(°C):	40
Type:	KS	Alt Ambient Max(°C):	60
Frame:	445TS	Insulation Class:	H
Phases:	3	NEMA Design:	B
Poles:	2	Nominal Efficiency:	95.0 %
Output Power:	150HP 111KW	Guaranteed Efficiency:	94.5
RPM:	3580	3/4 Load Efficiency:	95.2
Voltage:	460	KVA Code:	G
Hertz:	60	Max KVAR:	27.6
Amps - FL:	163.0	Power Factor:	90.5
Service Factor:	1.15	Bearing - DE:	6314ZC3
Alt Service Factor:	1.00	Bearing - ODE:	6314ZC3

Enclosure is Totally Enclosed Fan-Cooled

Stamped Nameplate Notes:

STAMP NP249A5564P051 AS BELOW:
 MODEL:5KS445SAA118D12 S/N: XXX
 CSA CERTIFIED CSA09.2216219 FOR EX NA IIC 200 C GC
 CL 1 ZONE2 AEX NA IIC 200C;CL 1 DIV2 GRP ABCD 200C
 IN -40C <= AMB <= 40C, 1.0 SF ON SINE-WAVE PWR
 SURF TEMP 230C AT 1.15SF ON SINE-WAVE PWR
 OR 200C VT OR 230C CT OR -- CHP PWM CONTROL
 ALTERNATE RATING FOR PWM CONTROL 1.0SF 40C AMB
 VT 0-60 HZ, CT 6-60 HZ, CHP -- HZ.

Additional Information:

2P - TS EXTN
 C/BOX 700 CU IN - 3.00" NPT
 OIL RESISTANT SLEEVING ON LEADS
 F1 MOUNTING

Performance Characteristics

1st Winding 1st Connection

Design: 44BD0136A

Marks:

LOAD %	125.0	115.0	100.0	75.0	50.0	25.0	0.0
% EFF	94.91	95.06	95.42	95.21	94.52	91.36	0.00
% PF	90.72	90.83	90.72	89.37	84.74	68.38	7.73
AMPS	203.8	186.97	162.19	123.74	87.64	56.19	38.55

TORQ(FL)#FT 220.08
AMPS(LR) 1043.13

TORQ(LR)%FL 149.9
PF AT START 0.22

TORQ(BD)%FL 264.2

This motor is capable of two cold or one hot start with a maximum connected load inertia of 487 Lb-Ft Sq (20.5 Kg-meter Sq)at 100% voltage, where the load torque varies with the square of the speed. Acceleration time with maximum inertia and the above load type is 33 seconds. Safe stall time at 100% voltage is 74 seconds cold, 40 seconds hot. Rotor inertia is 29.76 Lb-Ft Sq (1.25 Kg-meter Sq).

Open Circuit A-C: 1.858

Short Circuit D-C: 0.036

Short Circuit A-C: 0.072

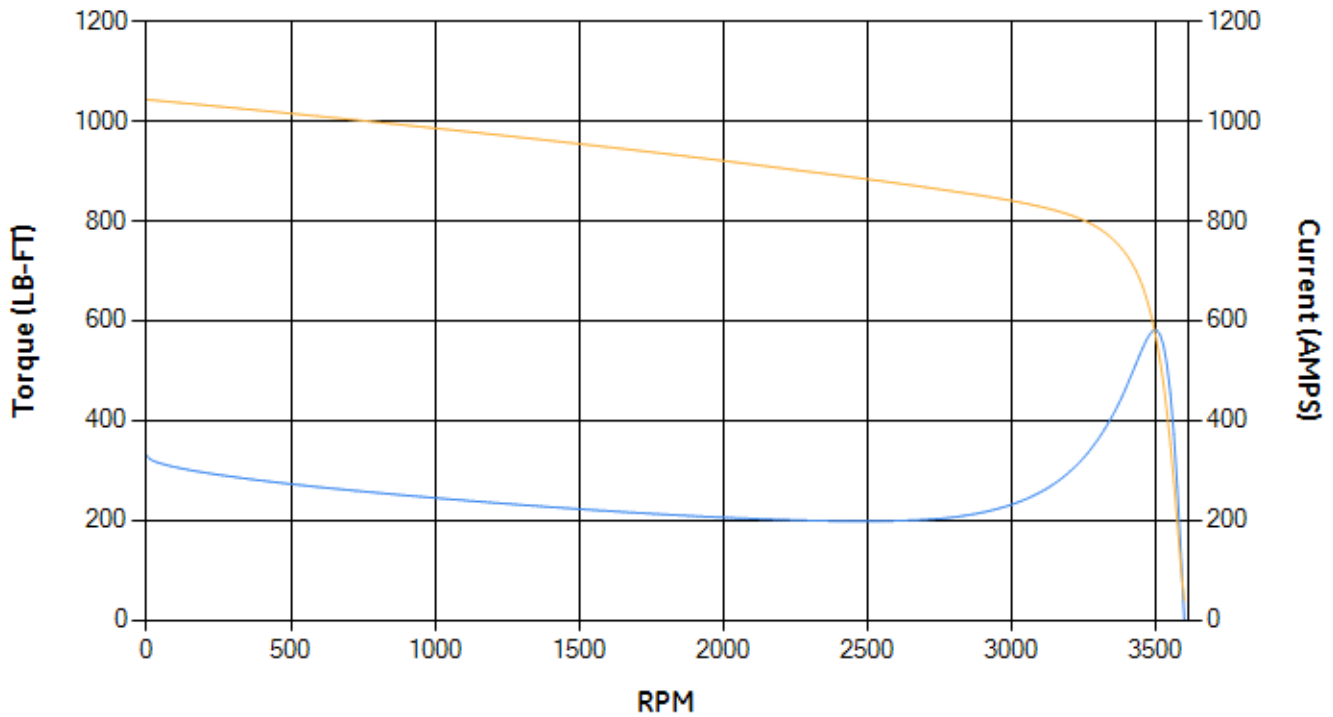
X/R Ratio: 13.641

Stator Slots: 48

Rotor Slots: 38

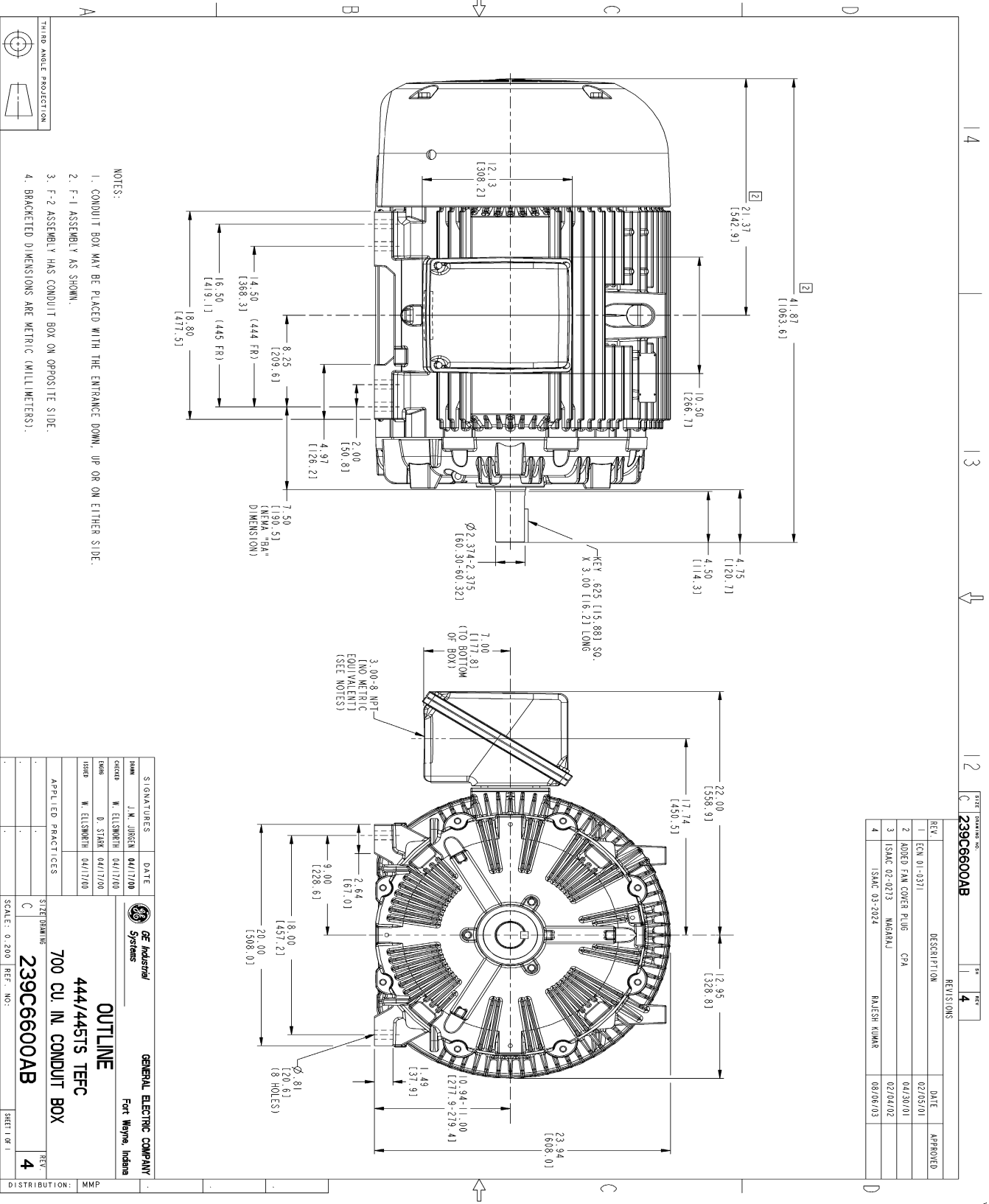
Speed Torque Current Curve (First Connection, First Speed)

— Torque — Current



NAME: 103016807 OBJECT: 239C6600AB DATE: 08-Aug-03 11:44:55

Marks:



REV.	DESCRIPTION	DATE	APPROVED
1	ECN 01-0371	02/05/01	
2	CODED FAN COVER PLUG CPA	04/30/01	
3	ISAC 02-0273 MARGAJ	02/04/02	
4	ISAC 03-2024 RAJESH KUMAR	08/06/03	

SIGNATURES	DATE	GENERAL ELECTRIC COMPANY
DESIGNER: J.M. JOHNSON	04/17/00	Fort Wayne, Indiana
CHECKED: W. ELLSWORTH	04/17/00	
DRAWN: D. STARR	04/17/00	
APPROVED: W. ELLSWORTH	04/17/00	

OUTLINE
444/445TS TFFC
700 CU. IN. CONDUIT BOX

SCALE: 0.200 REF. NO.: 239C6600AB

DISTRIBUTION: MMP

Marks:

Connection Diagram
GEM2034E-FIG7



End shield Assembly		
Part Description	DE Side Part#	ODE Side Part#
End Shield	115E4354AA1	115E4354LL1
Bearing	235A2616AA01	235A2616AA01
Slinger/Inproseal	149C4399G05	149C4399G05

Fan & Fan Cover Assembly	
Part Description	Part#
Fan	159C7100AA1
Fan Cover	128D6841AA1

Conduit & Accessories Box Assembly	
Part Description	Part#
Conduit Box	118D4408AD2

Mechanical Accessories	
Part Description	Part#
Brake	
Tachometer	