

Product Information Packet

January 13, 2017

Data shown is for the current revision model #. Ensure your nameplate model # matches.

| | |
|----------------------------|----------------------|
| Model Number: | 5KS326SAJ208A |
| Catalog Number: | V4989 |
| Instruction Manual: | GEK-95655 |
| Connection Diagram: | GEM2034E-FIG7 |
| Outline Drawing: | 148CB32TLHNBCAA0002 |

| Accessory Connection Diagrams | | | |
|-------------------------------|------|------------------------------|-----------|
| Bearing Thermocouple: | None | Heater: | 3027JE-1C |
| RTD: | None | Thermistor: | None |
| Thermostat: | None | Winding Thermocouple: | None |
| Bearing RTD: | None | | |

Table of Contents

| | |
|-----------------------------|----|
| Specification | 01 |
| Performance Characteristics | 02 |
| Outline Drawing | 03 |
| Connection Drawing(s) | 04 |
| Spare parts | 05 |



Marks:

| | | | |
|----------------------------|----------------------|-------------------------------|---------|
| MODEL NUMBER: | 5KS326SAJ208A | Estimated Weight: | 710 Lbs |
| Outline Drawing: | 148CB32TLHNBCAA0002 | Time Rating: | CONT |
| Connection Diagram: | GEM2034E-FIG7 | Enclosure: | TEFC |
| Instruction Book: | GEK-95655 | Encl Construction: | X\$D |
| Design Code: | 32BD1183A | Ambient Max(°C): | 40 |
| Type: | KS | Alt Ambient Max(°C): | -- |
| Frame: | L326HP16 | Insulation Class: | H |
| Phases: | 3 | NEMA Design: | B |
| Poles: | 4 | Nominal Efficiency: | 94.5 % |
| Output Power: | 50HP 37KW | Guaranteed Efficiency: | 93.6 |
| RPM: | 1780 | 3/4 Load Efficiency: | 94.8 |
| Voltage: | 460 | KVA Code: | G |
| Hertz: | 60 | Max KVAR: | 17.7 |
| Amps - FL: | 60.8 | Power Factor: | 81.5 |
| Service Factor: | 1.15 | Bearing - DE: | 6312C3 |
| Alt Service Factor: | -- | Bearing - ODE: | 6312ZC3 |

Enclosure is Totally Enclosed Fan-Cooled

Stamped Nameplate Notes:

HTR LDS HE1-HE2 115V 100W
 INVERTER DUTY PER NEMA MG1 PART 31
 ALTERNATE RATING FOR PWM CONTROL:1.0SF 40C AMBIENT
 VAR TORQUE RANGE 0-60 HZ
 SUITABLE FOR 40 HP, 380V, 50 HZ WITH
 58.8 AMPS AND 1480 RPM AT 1.00 SF
 API 610 12TH EDITION SHAFT DIMENSIONS

Additional Information:

4 POLE,VERT SOLID SHAFT NORMAL THRUST
 346 CU IN - 3.00" NPT
 INPRO SEAL ON UPPER END
 OIL RESISTANT SLEEVING ON LEADS
 115V HTR LDS TO MAIN CONDUIT BOX
 BEARING LIFE 8760 HOURS AT 1182 LB THRUST
 BRASS TEE DRAIN
 RCF: 3210 CPM AT C/BOX SIDE, 3510 CPM AT
 90 DEG FROM C/ BOX SIDE
 CG: 12.00 IN FROM P-BASE FACE



Performance Characteristics

1st Winding 1st Connection

Design: 32BD1183A

Marks:

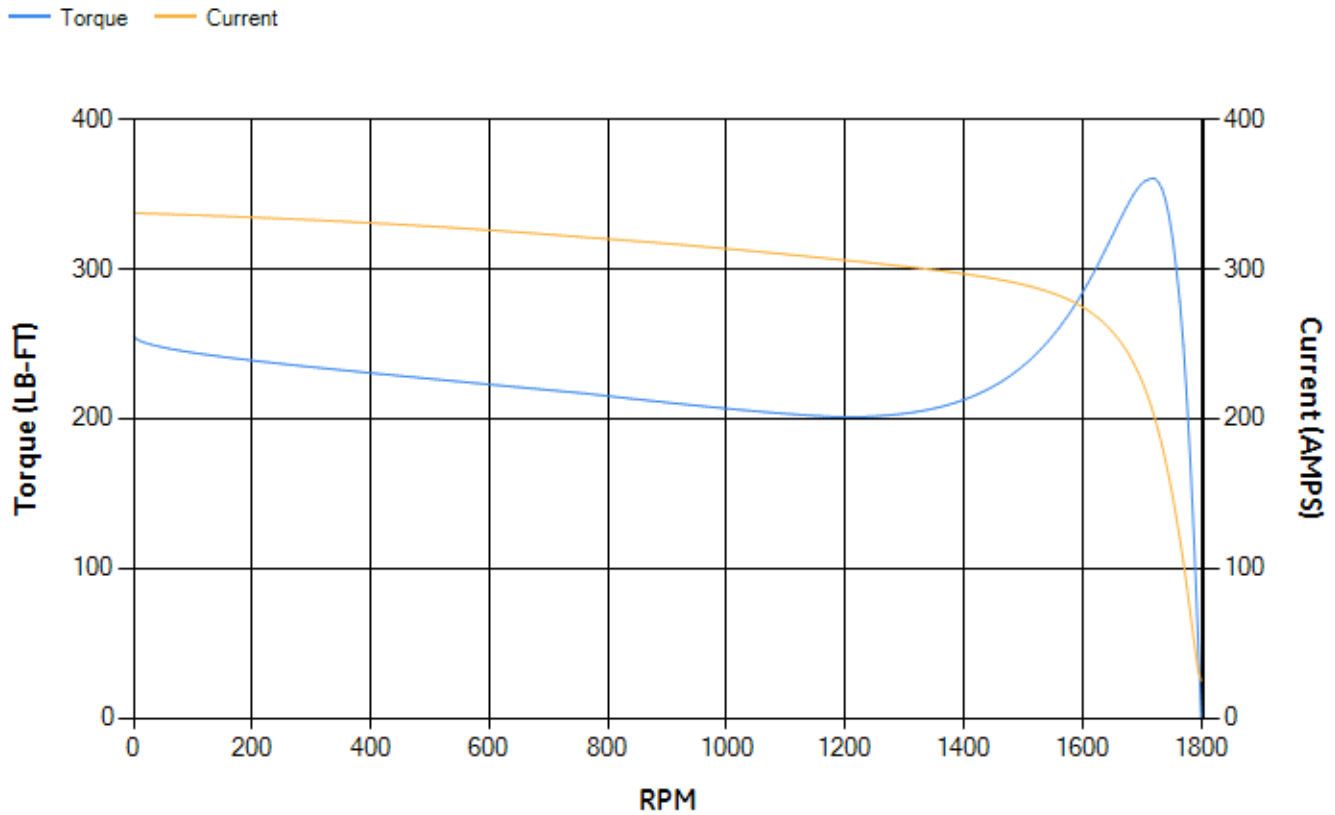
| LOAD % | 125.0 | 115.0 | 100.0 | 75.0 | 50.0 | 25.0 | 0.0 |
|--------|-------|-------|-------|-------|-------|-------|-------|
| % EFF | 93.77 | 94.07 | 94.64 | 94.79 | 94.49 | 91.94 | 0.00 |
| % PF | 83.05 | 82.58 | 81.3 | 76.84 | 66.75 | 44.41 | 3.34 |
| AMPS | 75.11 | 69.27 | 60.69 | 48.19 | 37.1 | 28.65 | 24.69 |

| | | | | | |
|--------------------|--------|--------------------|--------|--------------------|--------|
| TORQ(FL)#FT | 147.64 | TORQ(LR)%FL | 173.12 | TORQ(BD)%FL | 243.23 |
| AMPS(LR) | 337.37 | PF AT START | 0.34 | | |

This motor is capable of two cold or one hot start with a maximum connected load inertia of 1057 Lb-Ft Sq (44.5 Kg-meter Sq)at 100% voltage, where the load torque varies with the square of the speed. Acceleration time with maximum inertia and the above load type is 34 seconds. Safe stall time at 100% voltage is 78 seconds cold, 40 seconds hot. Rotor inertia is 8.61 Lb-Ft Sq (0.36 Kg-meter Sq).

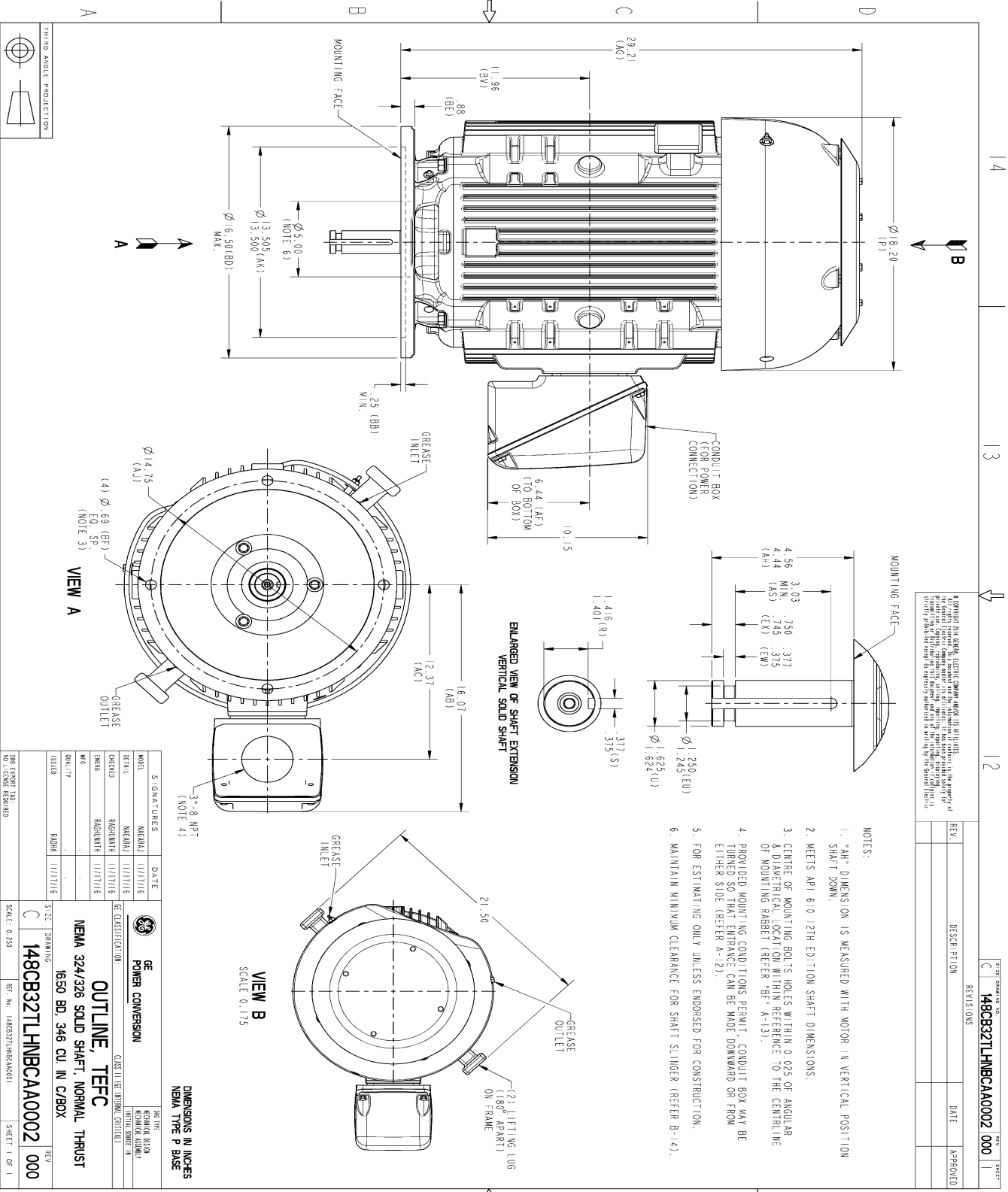
| | | | |
|---------------------------|-------|---------------------------|-------|
| Open Circuit A-C: | 0.511 | Short Circuit D-C: | 0.023 |
| Short Circuit A-C: | 0.031 | X/R Ratio: | 8.712 |
| Stator Slots: | 48 | Rotor Slots: | 38 |

Speed Torque Current Curve (First Connection, First Speed)



Marks:

SOLID MODEL: 148CB32TLHNBCAA0002



© Copyright 2017 GE. All rights reserved. GE, the GE logo, and the GE monogram are trademarks of GE. All other marks, logos, and symbols are the property of their respective owners. This drawing is the property of GE. It is intended for use in the design and manufacturing of the product. It is not to be used for any other purpose without the express written consent of GE. This drawing is not to be used for any other purpose without the express written consent of GE.

| REV. | DESCRIPTION | DATE | APPROVED |
|------|-------------|------|----------|
| | | | |

NOTES:

- *A-B DIMENSION IS MEASURED WITH MOTOR IN VERTICAL POSITION SHAFT DOWN.
- MEETS API 610 12TH EDITION SHAFT DIMENSIONS.
- CENTRE OF MOUNTING BOLTS HOLES WITHIN 0.025 OF ANGULAR & DIAMETRICAL LOCATION WITH REFERENCE TO THE CENTRELINE OF MOUNTING RABBIT (REFER 'BF'-A-13).
- PROVIDED MOUNTING CONDITIONS PERMIT, CONDUIT BOX MAY BE TURNED SO THAT ENTRANCE CAN BE MADE DOWNWARD OR FROM EITHER SIDE (REFER A-12).
- FOR ESTIMATING ONLY UNLESS ENDORSED FOR CONSTRUCTION.
- MAINTAIN MINIMUM CLEARANCE FOR SHAFT SLINGER (REFER B-14).

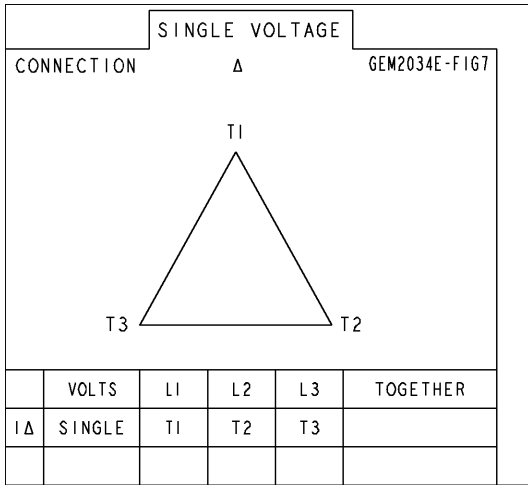
DIMENSIONS IN INCHES NEMA TYPE P BASE

| SIGNATURES | DATE | GE | REV |
|------------|----------|------------------|-----|
| MODEL | 11/17/16 | POWER CONVERSION | |
| DESIGN | 11/17/16 | | |
| CHKD | 11/17/16 | | |
| ENGR | 11/17/16 | | |
| DRW | 11/17/16 | | |
| ISSUED | 11/17/16 | | |

| | | |
|--------------------------|--------------------------|--------------------------|
| 148CB32TLHNBCAA0002 | 148CB32TLHNBCAA0002 | 148CB32TLHNBCAA0002 |
| 1650 BD, 346 CU IN C/BOX | 1650 BD, 346 CU IN C/BOX | 1650 BD, 346 CU IN C/BOX |
| 148CB32TLHNBCAA0002 | 148CB32TLHNBCAA0002 | 148CB32TLHNBCAA0002 |
| 1000 | 1000 | 1000 |

Marks:

Connection Diagram
GEM2034E-FIG7



Heater Connection
3027JE-1C



| End shield Assembly | | |
|---------------------|---------------|----------------|
| Part Description | DE Side Part# | ODE Side Part# |
| End Shield | 115E8205BA1 | 115E4200MB1 |
| Bearing | 235A2509AR01 | 235A2609AA01 |
| Slinger/Inproseal | 235A2300FM1 | 235A4575GS2 |

| Fan & Fan Cover Assembly | |
|--------------------------|-------------|
| Part Description | Part# |
| Fan | 159C6900G04 |
| Fan Cover | 128D6800AB1 |

| Conduit & Accessories Box Assembly | |
|------------------------------------|-------------|
| Part Description | Part# |
| Conduit Box | 149C4429AA2 |

| Mechanical Accessories | |
|------------------------|-------|
| Part Description | Part# |
| Brake | |
| Tachometer | |