

Product Information Packet

November 28, 2016

Data shown is for the current revision model #. Ensure your nameplate model # matches.

Model Number:	5CD193MA038A055
Catalog Number:	D610
Instruction Manual:	GEH-3967N
Connection Diagram:	36A167900CB501
Outline Drawing:	36A167936AA001

Accessory Connection Diagrams			
Bearing Thermocouple:	None	Heater:	None
RTD:	None	Thermistor:	None
Thermostat:	None	Winding Thermocouple:	None
Bearing RTD:	None		

Table of Contents	
Specification	01
Outline Drawing	02
Connection Drawing(s)	03

Marks:

MODEL NUMBER:	5CD193MA038A055	Enclosure Mtg Assem:	36A167775AC001
Outline Drawing:	36A167936AA001	Instruction Book:	GEH-3967N
Connection Diagram:	36A167900CB501	RPM:	1150/2000
Horsepower:	50	Armature Amps:	82.1
Armature Volts:	500	Type:	CD366AT
Wound:	SHUNT	Power Supply Code:	C
Enclosure:	DPFG-SV	Insulation Class:	F
Duty:	CONT	Ambient Max (°C):	40 C
Rating Code:	193M1340-14	Field Volts:	300/150
K(V):	3.87 Cemf volts/Radian/Sec	WK2:	18.30Lb Ft2
K(T):	2.78 Ft/Amp	Year of Manufacture:	2016
Minimum Ambient:	0 C	Max Altitude:	3300 Ft

Resistances at 25 Degrees C :

Shunt Field:	73.6 OHMS
Armature:	.2370 OHMS
Commutator Field:	.0568 OHMS

Inductances:

Armature Circuit Total:	6.290 mH Saturated
Shunt Field:	55.0 Henries Unsaturated

Shunt Field Data:

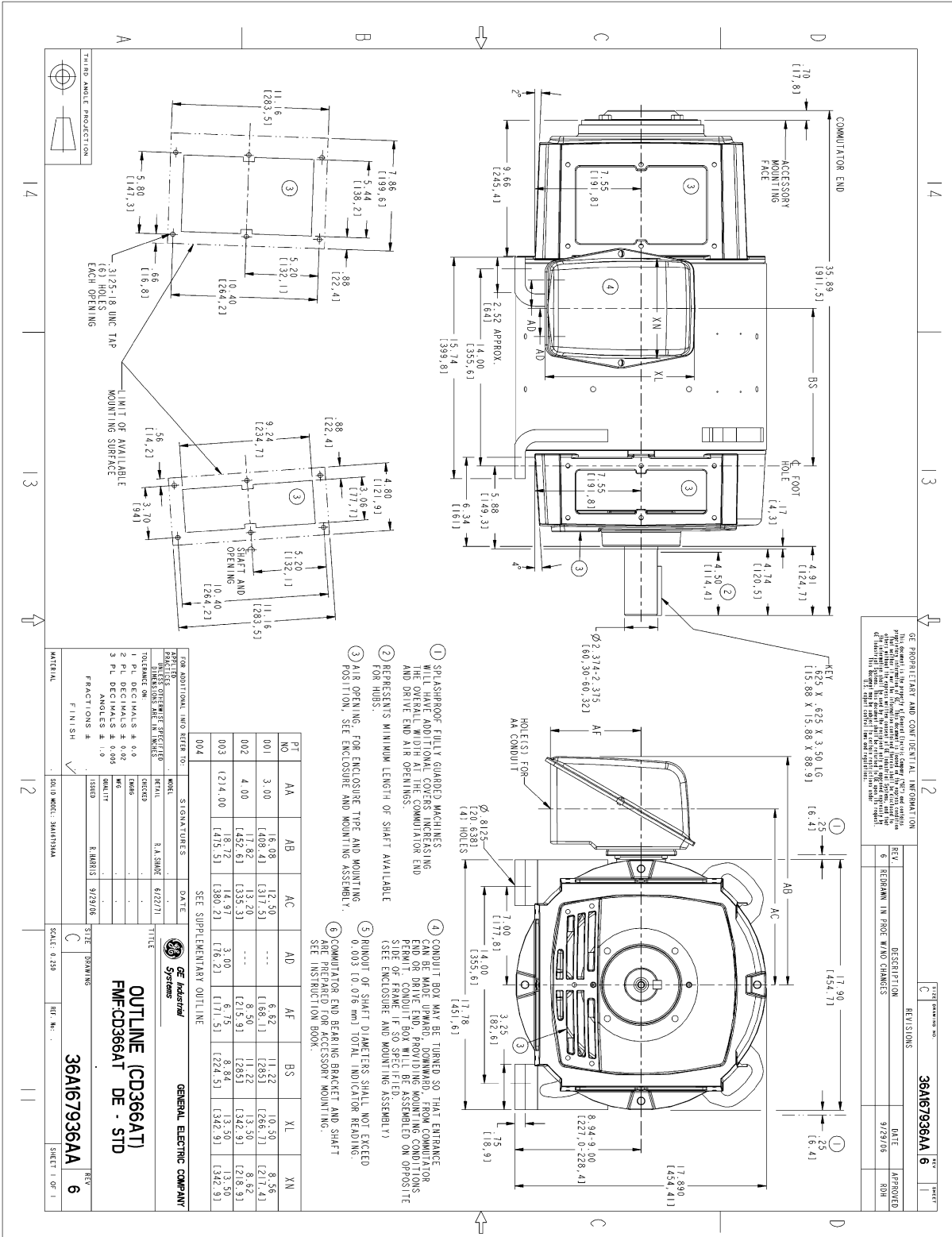
Shunt Field Current(1): 2.9 AMPS at Rated Load and 1150 RPM
 Shunt Field Current(2): 2.1 AMPS at Rated Load and 1433 RPM
 Shunt Field Current(3): 1.35 AMPS at Rated Load and 2000 RPM

Additional Machine Notes:

DRIPPROOF FULLY GUARDED, SEPARATELY VENTILATED -
 BALL BEARINGS
 CONDUIT BOX ON RIGHT HAND SIDE FACING COMMUTATOR END
 STANDARD SHAFT DRIVE END ONLY - WITH FEET
 SEPARATELY VENTILATED AT 610 CFM
 PRESSURE DROP 2.2 INCHES OF WATER
 WITH:
 CSA STAMP
 THERMOSTAT- NORMALLY CLOSED, AC RATING- 600V MAX-
 .5A, 250V-1.5A, OR 125V-3A- DC RATING- 30V MAX-
 1.5A. MAXIMUM CURRENT BASED ON INDUCTIVE LOADS UP
 TO AND INCLUDING NEMA NO. 5 CONTACTOR.

NAME: 208009544 OBJECT: 36A167936AA DATE: 02-Oct-06 11:28:32

Marks:

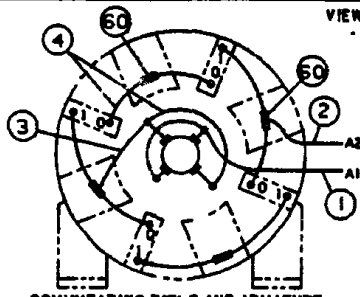
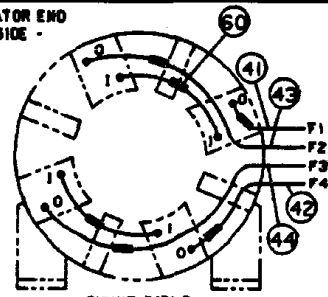
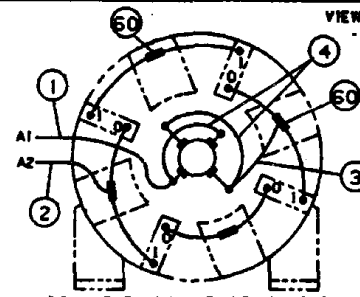
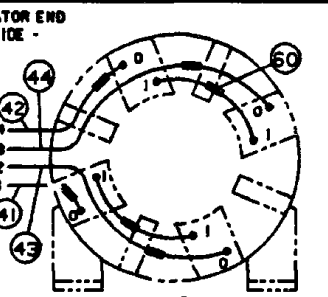
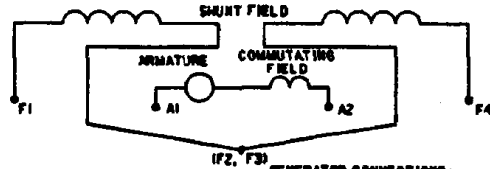
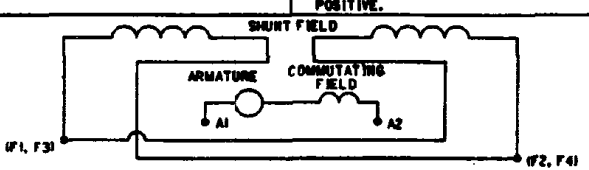


REV.	DESCRIPTION	DATE	APPROVED
6	REVISION IN FRONT VIEW CHANGES	9/29/05	ROB

36A167936AA 6



Marks:

NO S.O.	GENERAL ELECTRIC	36A167900CB501 CONT ON SHEET
36A167900CB501 CONT ON SHEET	TITLE CONNECTION DIAGRAM	SN NO.
SR NO.	FIRST MADE FOR 4 POLE - 360AT (WP)	
DIRECT CURRENT MOTOR AND GENERATOR - SHUNT WOUND 1 OR 2 CIRCUIT SHUNT FIELD - 2 CIRCUIT COMMUTATING FIELD		
VIEWS FACING COMMUTATOR END - LEADS OUT RIGHT SIDE -		
		
VIEWS FACING COMMUTATOR END - LEADS OUT LEFT SIDE -		
		
<p>ALL EXTERNAL LEADS ARE MARKED. ALL CONNECTIONS AND TERMINATIONS EXTERNAL TO MAGNET FRAME MUST BE INSULATED PER NATIONAL ELECTRICAL CODE AND SOUND LOCAL PRACTICES.</p> <p>SPACE HEATERS, WHEN SPECIFIED, WILL HAVE LEADS WITH TERMINAL MARKINGS H1 AND H2.</p> <p>THERMOSTAT, WHEN SPECIFIED, WILL HAVE LEADS WITH TERMINAL MARKINGS P1 AND P2.</p> <p>ENCIRCLED NUMBERS MAY BE USED FOR PART IDENTIFICATION.</p>		
<p>FOR HIGH NAMEPLATE EXCITATION VOLTAGE CONNECT SHUNT FIELD LEADS AS INDICATED</p>		
<p>MOTOR CONNECTIONS: FOR CCW ROTATION FACING COMMUTATOR END, MAKE LEADS F1 AND A1 THE SAME POLARITY. FOR CW ROTATION FACING COMMUTATOR END, MAKE LEADS F1 AND A2 THE SAME POLARITY.</p>	<p>GENERATOR CONNECTIONS: FOR CW ROTATION FACING COMMUTATOR END, F1 POSITIVE WILL MAKE A2 POSITIVE. FOR CCW ROTATION FACING COMMUTATOR END, F1 POSITIVE WILL MAKE A1 POSITIVE.</p>	
<p>FOR LOW NAMEPLATE EXCITATION VOLTAGE CONNECT SHUNT FIELD LEADS AS INDICATED</p>		
<p>MOTOR CONNECTIONS: FOR CCW ROTATION FACING COMMUTATOR END, MAKE LEADS (F1,F3) & A1 THE SAME POLARITY. FOR CW ROTATION FACING COMMUTATOR END, MAKE LEADS (F1,F3) & A2 THE SAME POLARITY.</p>	<p>GENERATOR CONNECTIONS: FOR CW ROTATION FACING COMMUTATOR END, (F1,F3) POSITIVE WILL MAKE A2 POSITIVE. FOR CCW ROTATION FACING COMMUTATOR END, (F1,F3) POSITIVE WILL MAKE A1 POSITIVE.</p>	
<p>10-7-94 R.D.BOLLA</p>	<p>NO S.O. RETR</p>	QC (1) CAD
<p>MADE BY W.C.HOVIS FEB.15.1972</p>	<p>FILE KC13-1</p>	<p>GE MOTORS DIV OR DEPT ERIE LOCATION</p>
<p>RE-ISSUED CAD/ R.D.BOLLA 10-7-94</p>		36A167900CB501 CONT ON SHEET SN NO.

DC2-28112-15-671