

# Product Information Packet

November 8, 2016

Data shown is for the current revision model #. Ensure your nameplate model # matches.

<b>Model Number:</b>	<b>5KS256STE122A</b>
<b>Catalog Number:</b>	<b>M7720</b>
<b>Instruction Manual:</b>	GEI-M1031
<b>Connection Diagram:</b>	GEM2034E-FIG210
<b>Outline Drawing:</b>	358B6278AB

Accessory Connection Diagrams			
<b>Bearing Thermocouple:</b>	None	<b>Heater:</b>	None
<b>RTD:</b>	None	<b>Thermistor:</b>	None
<b>Thermostat:</b>	None	<b>Winding Thermocouple:</b>	None
<b>Bearing RTD:</b>	None		

Table of Contents	
Specification	01
Performance Characteristics	02
Outline Drawing	03
Connection Drawing(s)	04

**Marks:**

<b>MODEL NUMBER:</b>	<b>5KS256STE122A</b>	<b>Estimated Weight:</b>	379 Lbs
<b>Outline Drawing:</b>	358B6278AB	<b>Time Rating:</b>	CONT
<b>Connection Diagram:</b>	GEM2034E-FIG210	<b>Enclosure:</b>	TEFC
<b>Instruction Book:</b>	GEI-M1031	<b>Encl Construction:</b>	SD
<b>Design Code:</b>	25AD0016A	<b>Ambient Max(°C):</b>	40
<b>Type:</b>	KS	<b>Alt Ambient Max(°C):</b>	--
<b>Frame:</b>	256TC	<b>Insulation Class:</b>	F
<b>Phases:</b>	3	<b>NEMA Design:</b>	A
<b>Poles:</b>	2	<b>Nominal Efficiency:</b>	91.0 %
<b>Output Power:</b>	20HP 14.8KW	<b>Guaranteed Efficiency:</b>	89.5
<b>RPM:</b>	3520	<b>3/4 Load Efficiency:</b>	91.0
<b>Voltage:</b>	230/460	<b>KVA Code:</b>	G
<b>Hertz:</b>	60	<b>Max KVAR:</b>	3.6
<b>Amps - FL:</b>	44.4/22.2	<b>Power Factor:</b>	92.5
<b>Service Factor:</b>	1.15	<b>Bearing - DE:</b>	6310ZZ
<b>Alt Service Factor:</b>	--	<b>Bearing - ODE:</b>	6208ZZ

**Enclosure is Totally Enclosed Fan-Cooled**

---

**Stamped Nameplate Notes:**

USABLE AT 200V @ 20 HP,50.8 AMPS @ 1.0 SF

LRA: 305.6/152.8

50HZ DATA: 15 HP,200/400V,44.2/22.1 AMPS @ 1.15 SF

50HZ DATA: 20 HP,200/400V,50.8/25.4 AMPS @ 1.00 SF

GREASE TYPE: SHELL ALVANIA R3 LITHIUM GREASE

**Additional Information:**

CONDUIT BOX MATERIAL: CAST IRON

SUITABLE FOR USE IN CLASS I DIVISION 2 LOCATIONS

CLASS I DIVISION 2 GROUPS A,B,C,D T3C

CLASS I ZONE 2 IIC T3C



**Performance Characteristics**

1st Winding 1st Connection

**Design: 25AD0016A**

**Marks:**

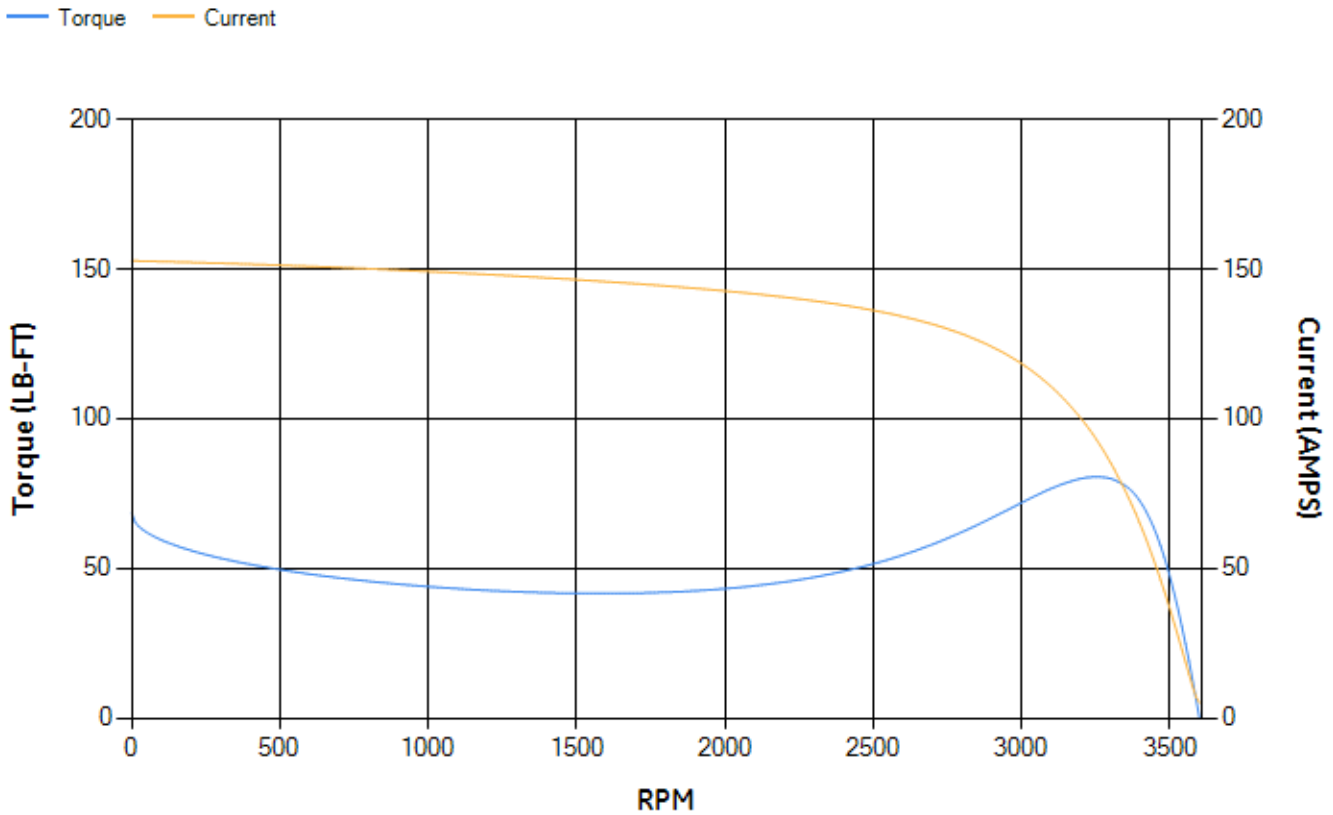
LOAD %	125.0	115.0	100.0	75.0	50.0	25.0	0.0
% EFF	89.09	89.63	90.52	91	90.63	86.68	0.00
% PF	93.06	93.05	92.79	91.32	86.83	71.33	12.23
AMPS	28.22	25.81	22.29	16.89	11.89	7.57	5.05

<b>TORQ(FL)#FT</b>	29.84	<b>TORQ(LR)%FL</b>	229.5	<b>TORQ(BD)%FL</b>	265.98
<b>AMPS(LR)</b>	152.76	<b>PF AT START</b>	0.36		

This motor is capable of two cold or one hot start with a maximum connected load inertia of 85 Lb-Ft Sq (3.58 Kg-meter Sq)at 100% voltage, where the load torque varies with the square of the speed. Acceleration time with maximum inertia and the above load type is 24 seconds. Safe stall time at 100% voltage is 47 seconds cold, 28 seconds hot. Rotor inertia is 1.27 Lb-Ft Sq (0.05 Kg-meter Sq).

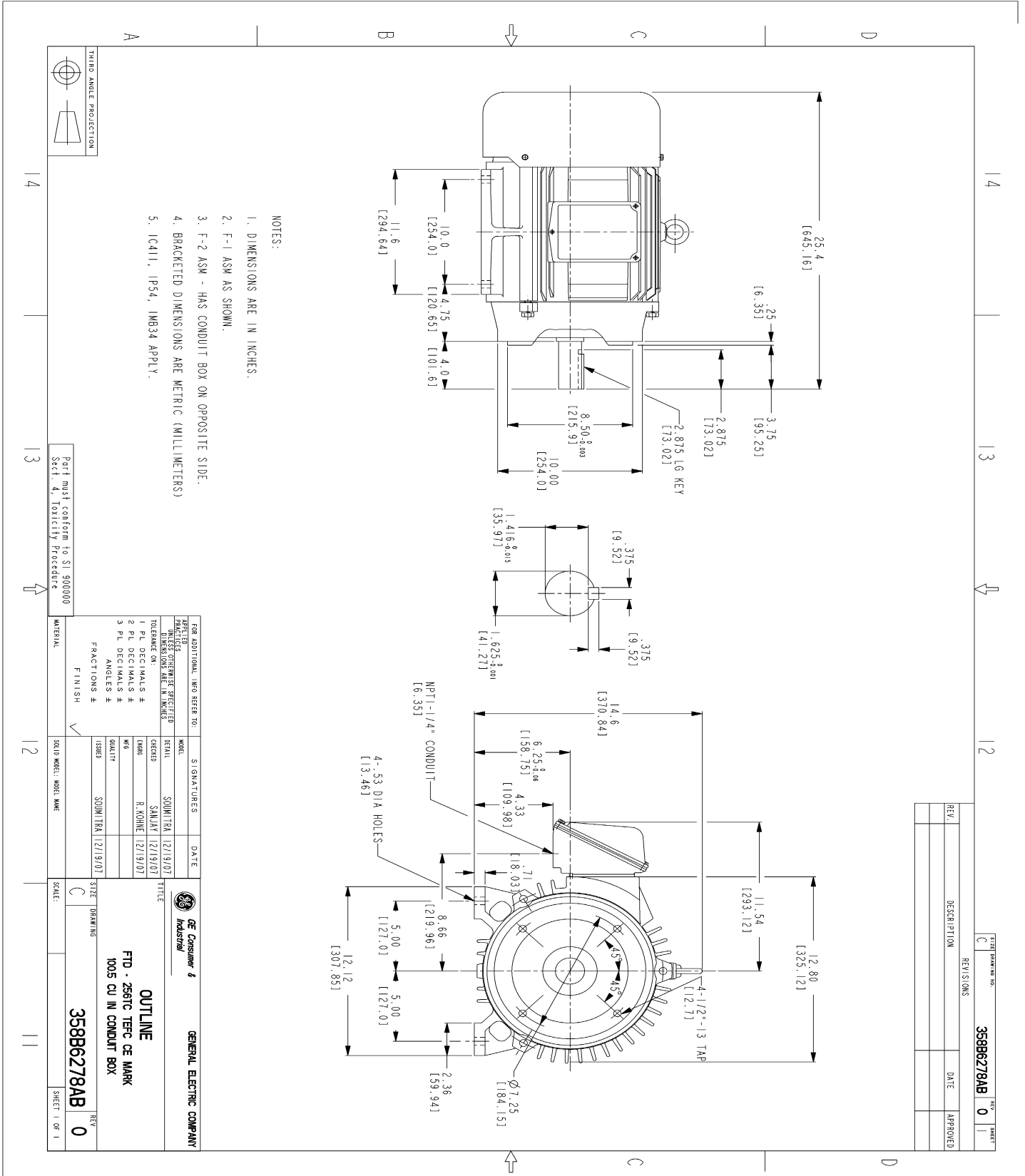
<b>Open Circuit A-C:</b>	0.534	<b>Short Circuit D-C:</b>	0.013
<b>Short Circuit A-C:</b>	0.015	<b>X/R Ratio:</b>	4.931
<b>Stator Slots:</b>	36	<b>Rotor Slots:</b>	44

**Speed Torque Current Curve (First Connection, First Speed)**



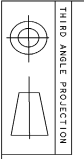
NAME:501291659 OBJECT:358B6278AB DATE:14-Jan-08 12:12:10

Marks:



NOTES:

1. DIMENSIONS ARE IN INCHES.
2. F-I ASW AS SHOWN.
3. F-2 ASW - HAS CONDUIT BOX ON OPPOSITE SIDE.
4. BRACKETED DIMENSIONS ARE METRIC (MILLIMETERS)
5. ICA11, IP54, IMB34 APPL Y.



Part must conform to SI 9000000  
Sect. 4, Toxicity Procedure

FOR ADDITIONAL INFO REFER TO:	SIGNATURES	DATE
REFLECTED DIMENSIONS SPECIFIED	MODEL	
DIMENSIONS ARE IN INCHES	SKETCH	12/19/07
TOLERANCE ON DIMENSIONS:	SANJAY	12/19/07
1. ± .010	R. KOHNE	12/19/07
2. ± .005		
3. ± .002		
4. ANGLES ± .5°		
5. FINISH		
	ISSUED	12/19/07

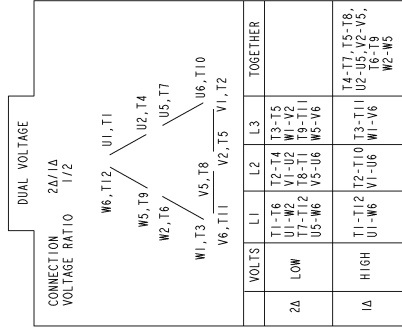
GE Consumer & Industrial	GENERAL ELECTRIC COMPANY
OUTLINE	
FID - 256TC TEFC CE MARK	
1005 CU IN CONDUIT BOX	
358B6278AB	REV 0
SHEET 1 OF 1	

REV.	DESCRIPTION	DATE	APPROVED

358B6278AB REV 0

Marks:

**Connection Diagram**  
**GEM2034E-FIG210**



NAME:501452353 OBJECT:GEM2034E-FIG210 DATE:25-Feb-08 14:03:35