

# Product Information Packet

November 8, 2016

Data shown is for the current revision model #. Ensure your nameplate model # matches.

<b>Model Number:</b>	<b>5KS284STE205RG3</b>
<b>Catalog Number:</b>	<b>M7568</b>
<b>Instruction Manual:</b>	GEI-M1031
<b>Connection Diagram:</b>	GEM2034E-FIG210
<b>Outline Drawing:</b>	358B6273AE

Accessory Connection Diagrams			
<b>Bearing Thermocouple:</b>	None	<b>Heater:</b>	None
<b>RTD:</b>	None	<b>Thermistor:</b>	None
<b>Thermostat:</b>	None	<b>Winding Thermocouple:</b>	None
<b>Bearing RTD:</b>	None		

Table of Contents	
Specification	01
Performance Characteristics	02
Outline Drawing	03
Connection Drawing(s)	04

**Marks:**

<b>MODEL NUMBER:</b>	<b>5KS284STE205RG3</b>	<b>Estimated Weight:</b>	450 Lbs
<b>Outline Drawing:</b>	358B6273AE	<b>Time Rating:</b>	CONT
<b>Connection Diagram:</b>	GEM2034E-FIG210	<b>Enclosure:</b>	TEFC
<b>Instruction Book:</b>	GEI-M1031	<b>Encl Construction:</b>	SD
<b>Design Code:</b>	28AD1017A	<b>Ambient Max(°C):</b>	40
<b>Type:</b>	KS	<b>Alt Ambient Max(°C):</b>	--
<b>Frame:</b>	284T	<b>Insulation Class:</b>	F
<b>Phases:</b>	3	<b>NEMA Design:</b>	B
<b>Poles:</b>	4	<b>Nominal Efficiency:</b>	93.6 %
<b>Output Power:</b>	25HP 18.5KW	<b>Guaranteed Efficiency:</b>	92.4
<b>RPM:</b>	1775	<b>3/4 Load Efficiency:</b>	94.3
<b>Voltage:</b>	230/460	<b>KVA Code:</b>	G
<b>Hertz:</b>	60	<b>Max KVAR:</b>	6.5
<b>Amps - FL:</b>	59.6/29.8	<b>Power Factor:</b>	84
<b>Service Factor:</b>	1.15	<b>Bearing - DE:</b>	6310ZZ
<b>Alt Service Factor:</b>	--	<b>Bearing - ODE:</b>	6210ZZ

**Enclosure is Totally Enclosed Fan-Cooled**

---

**Stamped Nameplate Notes:**

USABLE AT 200V @ 25 HP, 68 AMPS @ 1.0 SF

LRA: 338.8/169.4

50HZ DATA: 20 HP,200/400V,63/31.5 AMPS @ 1.15 SF

50HZ DATA: 25 HP,200/400V, 68/34 AMPS @ 1.00 SF

GREASE TYPE: SHELL ALVANIA R3 LITHIUM GREASE

**Additional Information:**

CONDUIT BOX VOLUME (CU IN): 272.9

CONDUIT BOX MATERIAL: CAST IRON

INVERTER DUTY PER NEMA MG1 PART 31

FOR VARIABLE TORQUE LOADS

BAM 1/12



**Performance Characteristics**

1st Winding 1st Connection

**Design: 28AD1017A**

**Marks:**

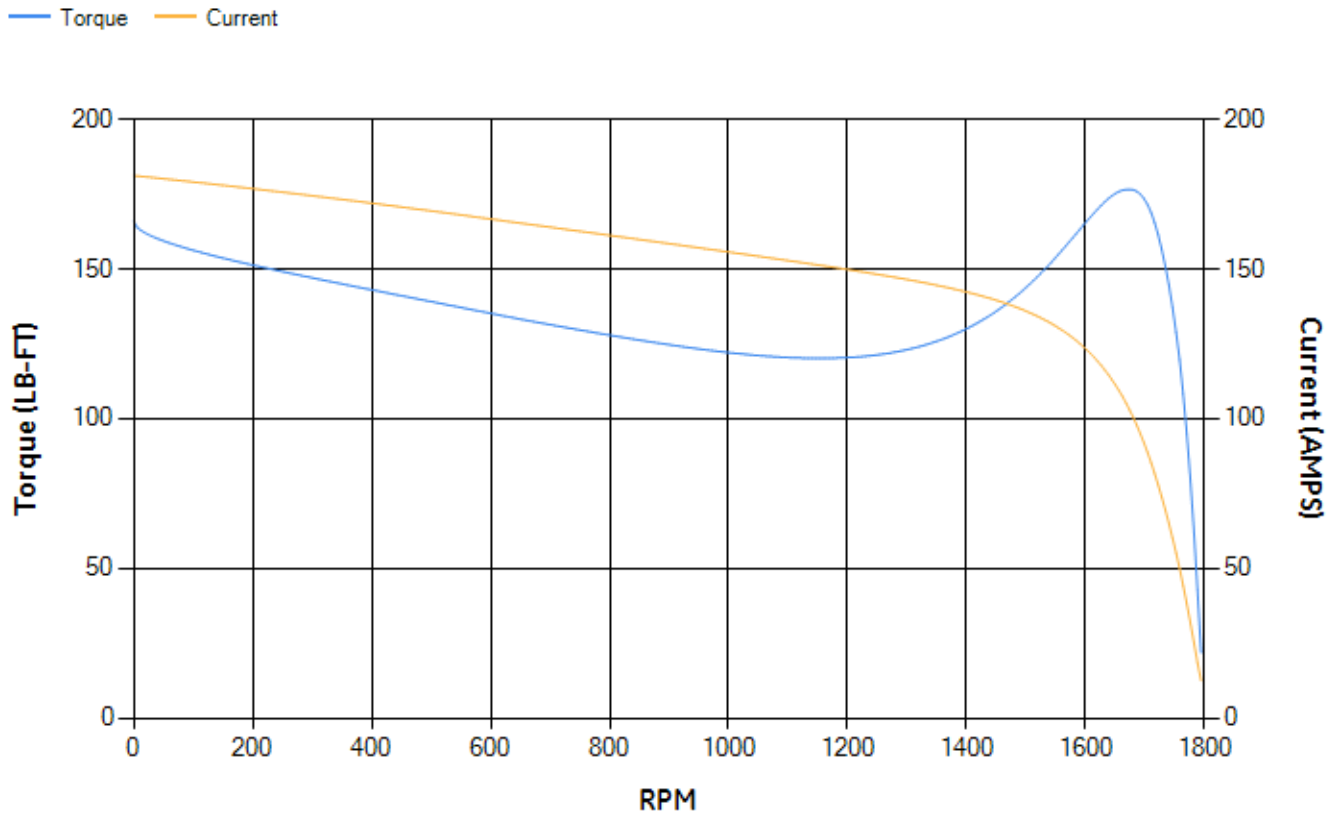
LOAD %	125.0	115.0	100.0	75.0	50.0	25.0	0.0
% EFF	93.03	93.41	94.08	94.32	94.05	91.37	0.00
% PF	84.45	84.56	84.24	81.84	74.78	54.92	5.21
AMPS	37.23	34.07	29.53	22.73	16.63	11.66	9.05

<b>TORQ(FL)#FT</b>	74.04	<b>TORQ(LR)%FL</b>	224.18	<b>TORQ(BD)%FL</b>	237.76
<b>AMPS(LR)</b>	181.21	<b>PF AT START</b>	0.39		

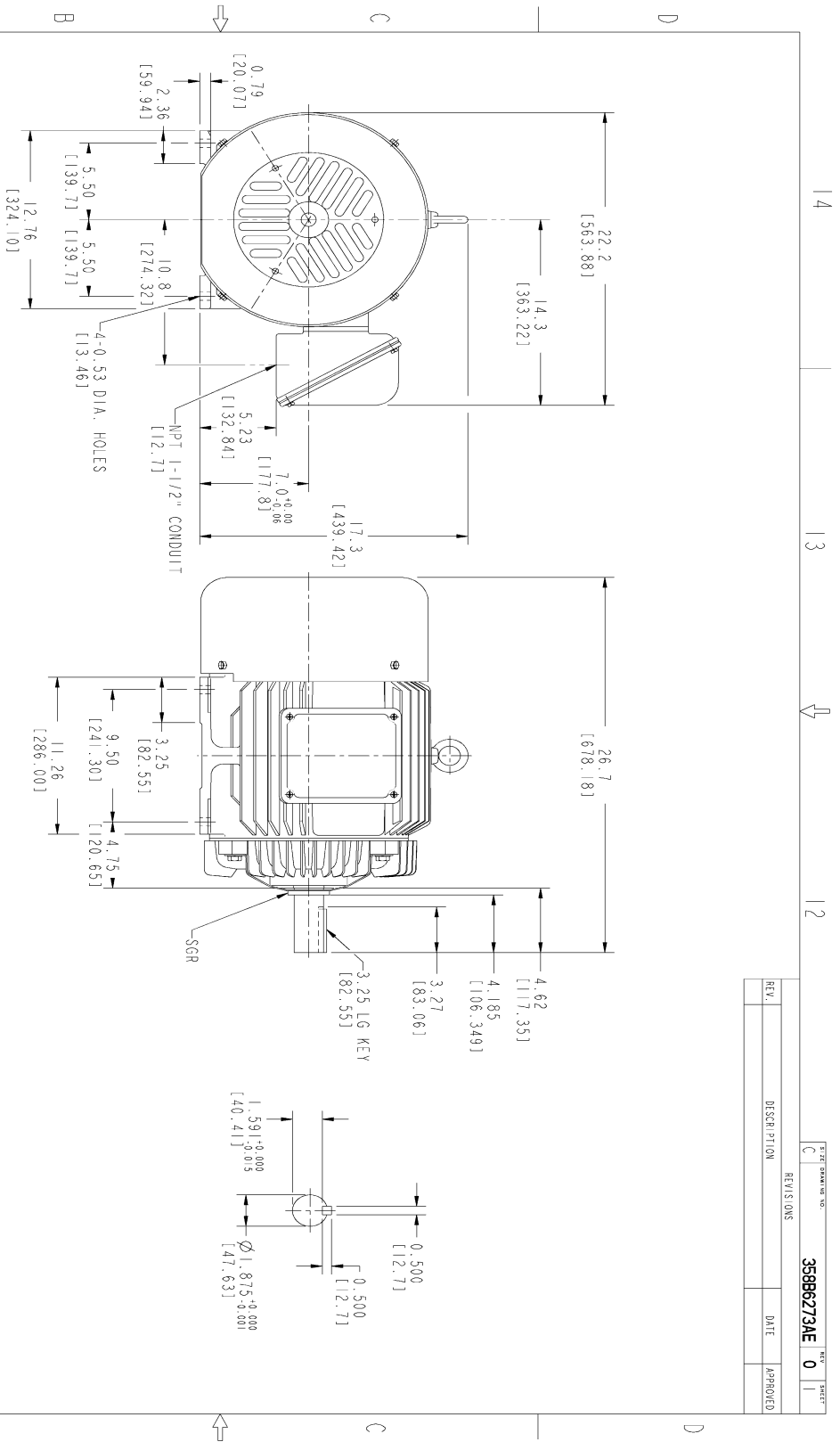
This motor is capable of two cold or one hot start with a maximum connected load inertia of 926 Lb-Ft Sq (38.98 Kg-meter Sq)at 100% voltage, where the load torque varies with the square of the speed. Acceleration time with maximum inertia and the above load type is 47 seconds. Safe stall time at 100% voltage is 81 seconds cold, 60 seconds hot. Rotor inertia is 4.52 Lb-Ft Sq (0.19 Kg-meter Sq).

<b>Open Circuit A-C:</b>	0.575	<b>Short Circuit D-C:</b>	0.021
<b>Short Circuit A-C:</b>	0.024	<b>X/R Ratio:</b>	7.83
<b>Stator Slots:</b>	48	<b>Rotor Slots:</b>	40

**Speed Torque Current Curve (First Connection, First Speed)**



Marks:



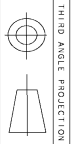
NOTES :

1. DIMENSIONS ARE IN INCHES.
2. F-1 ASM AS SHOWN.
3. F-2 ASM - HAS CONDUIT BOX ON OPPOSITE SIDE.
4. BRACKETED DIMENSIONS ARE METRIC (MILLIMETERS)
5. [C41], [P54], [MB34] APPLY

REV.	DESCRIPTION	DATE	APPROVED

SIZE: DRAWING NO. 358B6273AE 0 11

MODEL	SIGNATURES	DATE	<p>GENERAL ELECTRIC COMPANY</p> <p><b>OUTLINE</b></p> <p>FTD - 284T TFFC CE MARK WITH SGR</p> <p>2729 CU IN CONDUIT BOX</p>
SCALE	SHANKAR	07/04/11	
DESIGN	VENKAT J	07/04/11	
CHKD	VENKAT J	07/04/11	
ISSUED	SHANKAR	07/04/11	



THIRD ANGLE PROJECTION

14

13

12

11

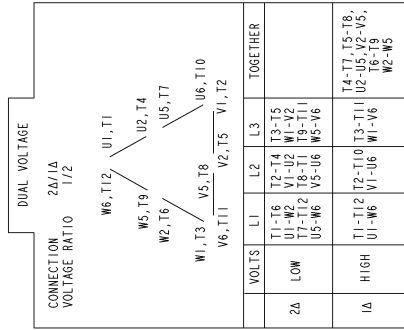
SCALE: DRAWING SCALE C

SIZE: DRAWING 358B6273AE 0

SHEET 1 OF 1

Marks:

**Connection Diagram**  
**GEM2034E-FIG210**



NAME:501452353 OBJECT:GEM2034E-FIG210 DATE:25-Feb-08 14:03:35

