

Product Information Packet

November 7, 2016

Data shown is for the current revision model #. Ensure your nameplate model # matches.

Model Number:	5CD143UA022B010
Catalog Number:	D586
Instruction Manual:	GEH-3967
Connection Diagram:	36A167960CA501
Outline Drawing:	36A167921AA002

Accessory Connection Diagrams			
Bearing Thermocouple:	None	Heater:	None
RTD:	None	Thermistor:	None
Thermostat:	None	Winding Thermocouple:	None
Bearing RTD:	None		

Table of Contents	
Specification	01
Outline Drawing	02
Connection Drawing(s)	03

Marks:

MODEL NUMBER:	5CD143UA022B010	Enclosure Mtg Assem:	36A167770CA201
Outline Drawing:	36A167921AA002	Instruction Book:	GEH-3967
Connection Diagram:	36A167960CA501	RPM:	2500/2750
Horsepower:	5	Armature Amps:	23.6
Armature Volts:	180	Type:	CD186AT
Wound:	SHUNT	Power Supply Code:	K
Enclosure:	DPFG	Insulation Class:	F
Duty:	CONT	Ambient Max (°C):	40 C
Rating Code:	143U1350-07	Field Volts:	200/100
K(V):	.63 Cemf volts/Radian/Sec	WK2:	.45Lb Ft2
K(T):	.44 Ft/Amp	Year of Manufacture:	2016
Minimum Ambient:	0 C	Max Altitude:	3300 Ft

Resistances at 25 Degrees C :

Shunt Field:	155 OHMS
Armature:	.3031 OHMS
Commutator Field:	.1263 OHMS

Inductances:

Armature Circuit Total:	7.670 mH Saturated
Shunt Field:	79.0 Henries Unsaturated

Shunt Field Data:

Shunt Field Current(1): .93 AMPS at Rated Load and 2500 RPM
 Shunt Field Current(2): .85 AMPS at Rated Load and 2583 RPM
 Shunt Field Current(3): .72 AMPS at Rated Load and 2750 RPM

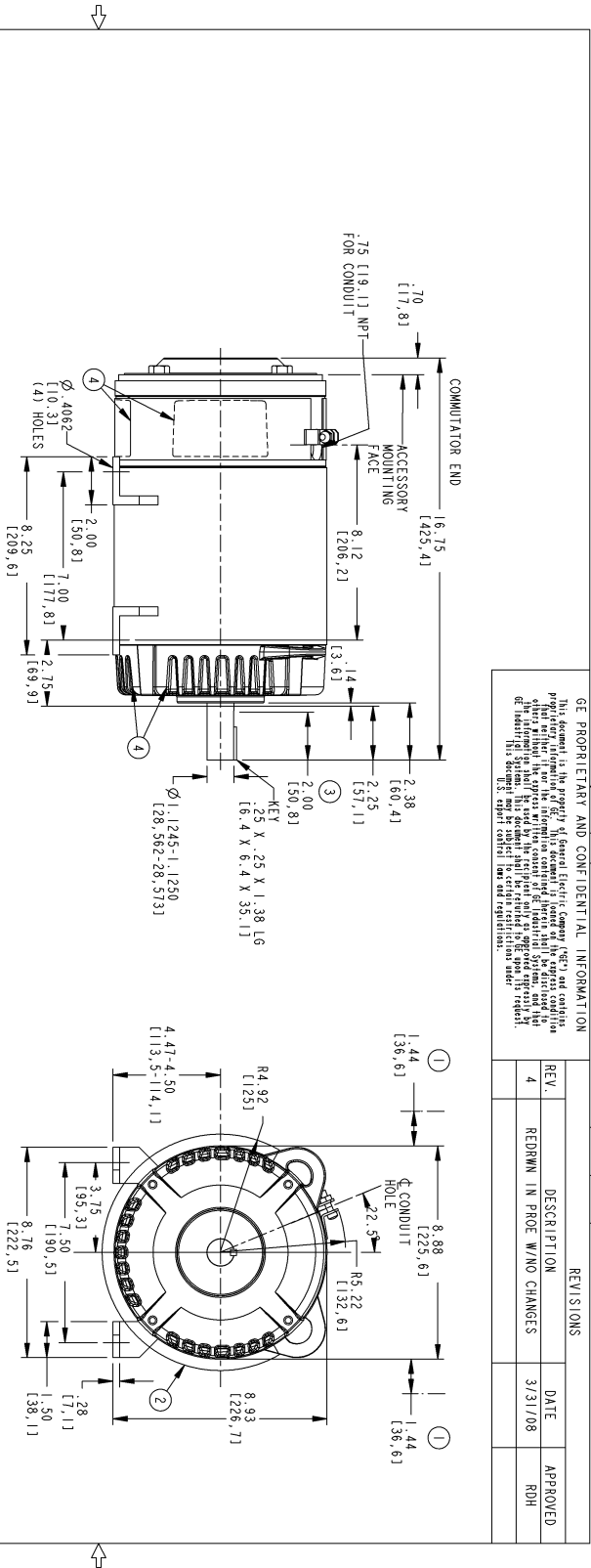
Additional Machine Notes:

DRIPPROOF FULLY GUARDED - BALL BEARINGS
 STANDARD SHAFT DRIVE END ONLY - WITH FEET
 WITH:
 CSA STAMP
 THERMOSTAT- NORMALLY CLOSED, AC RATING- 600V MAX-
 .5A, 250V-1.5A, OR 125V-3A, DC RATING- 30V MAX-
 1.5A. MAXIMUM CURRENT BASED ON INDUCTIVE LOADS UP
 TO AND INCLUDING NEMA NO.5 CONTACTOR.



NAME:208009544 OBJECT:36A167921AA002 DATE:31-Mar-08 14:48:06

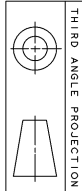
Marks:



- ① SPLASPROOF FULLY GUARDED MACHINES WILL HAVE ADDITIONAL COVERS INCREASING THE OVERALL WIDTH AT THE COMMUTATOR END AND DRIVE SIDE AIR OPENINGS.
- ② DRIPPROOF FULLY GUARDED VERTICAL DRIVE END SHAFT DOWN MACHINES WILL HAVE ADDITIONAL COVERS INCREASING THE OVERALL WIDTH AND EXCEEDING BOTTOM OF MOUNTING FEET AT THE COMMUTATOR END OPENINGS.
- ③ REPRESENTS MINIMUM LENGTH OF SHAFT AVAILABLE FOR HUBS.
- ④ AIR OPENINGS, FOR ENCLOSURE TYPE AND MOUNTING POSITION. SEE ENCLOSURE AND MOUNTING ASSEMBLY. TOTALLY ENCLOSED MACHINES WILL NOT HAVE OPENINGS OR COVERS ON DRIVE END.
- ⑤ SHAFT RUNOUT NOT TO EXCEED .002 [0.051 mm] INCH TOTAL INDICATOR READING.

GE PROPRIETARY AND CONFIDENTIAL INFORMATION
 This document is the property of General Electric Company (GE) and contains proprietary information. This document is loaned to the recipient conditionally and shall remain the property of GE. It is to be used for the specific purpose and no other use is permitted without the express written consent of GE Industrial Systems and the recipient. This document may be subject to actual restrictions under applicable U.S. Export Control and other regulations.

REV.	DESCRIPTION	DATE	APPROVED
4	REDRAWN IN PROE W/NO CHANGES	3/31/08	RDH



Part must conform to SI 900000
 Sect. 4, Toxicity Procedure

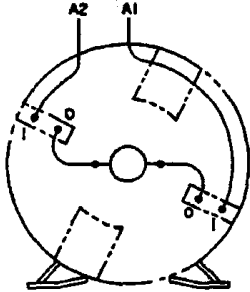
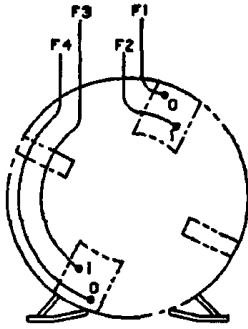
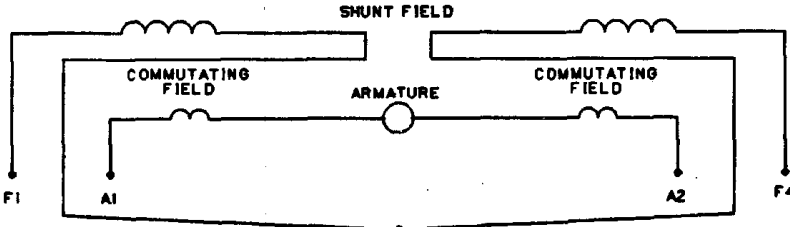
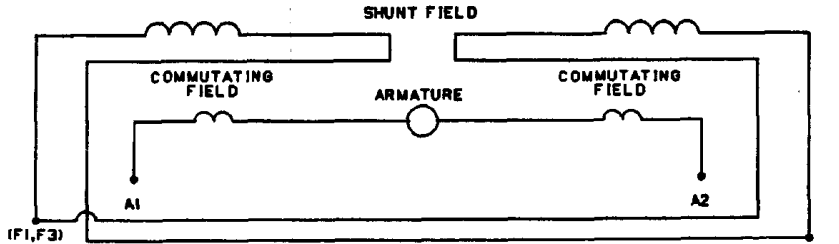
FOR ADDITIONAL INFO REFER TO:	SIGNATURES	DATE
DETAIL	P. BIELETT	3/27/08
CHECKED		
ENG		
QUALITY		
ISSUED	J.H. LUCE	1/28/08

TITLE	SCALE	REF. NO.	SHEET #
OUTLINE FIM-CD186AT DE-NEMA AT CE-ACS	0.250		4

APPROX. NET WT. = 104 LBS.

GE Consumer & Industrial
 GENERAL ELECTRIC COMPANY

Marks:

NO S.O.	GENERAL ELECTRIC	36A167960CA501 CONT ON SHEET SH NO.
REV 1 36A167960CA501 CONT ON SHEET SH NO.	TITLE CONNECTION DIAGRAM	
FIRST MADE FOR 180AT 2 POLE DIRECT CURRENT MOTOR AND GENERATOR - SHUNT WOUND 1 OR 2 CIRCUIT SHUNT FIELD, 1 CIRCUIT COMMUTATING FIELD		
VIEWS FACING COMMUTATOR END		
 <p>COMMUTATING FIELD AND ARMATURE</p>	 <p>SHUNT FIELD</p>	
<p>ALL EXTERNAL LEADS ARE MARKED. ALL CONNECTIONS AND TERMINATIONS EXTERNAL TO MAGNET FRAME MUST BE INSULATED PER NATIONAL ELECTRICAL CODE AND SOUND LOCAL PRACTICES.</p> <p>SPACE HEATERS, WHEN SPECIFIED, WILL HAVE LEADS WITH TERMINAL MARKINGS H1 AND H2.</p> <p>THERMOSTAT, WHEN SPECIFIED, WILL HAVE LEADS WITH TERMINAL MARKINGS P1 AND P2.</p> <p>ENCIRCLED NUMBERS MAY BE USED FOR PART IDENTIFICATION.</p>		
<p>FOR HIGH NAMEPLATE EXCITATION VOLTAGE CONNECT SHUNT FIELD LEADS AS INDICATED</p>	 <p style="text-align: center;">(F2,F3)</p>	
<p>MOTOR CONNECTIONS: FOR CCW ROTATION FACING COMM END, MAKE LEADS F1 AND A1 THE SAME POLARITY. FOR CW ROTATION FACING COMM END, MAKE LEADS F1 AND A2 THE SAME POLARITY.</p>	<p>GENERATOR CONNECTIONS: FOR CW ROTATION FACING COMM END, F1 POSITIVE WILL MAKE A2 POSITIVE. FOR CCW ROTATION FACING COMM END, F1 POSITIVE WILL MAKE A2 POSITIVE.</p>	
<p>FOR LOW NAMEPLATE EXCITATION VOLTAGE CONNECT SHUNT FIELD LEADS AS INDICATED</p>	 <p style="text-align: center;">(F1,F3) (F2,F4)</p>	
<p>MOTOR CONNECTIONS: FOR CCW ROTATION FACING COMM END, MAKE LEADS (F1,F3) AND A1 THE SAME POLARITY. FOR CW ROTATION FACING COMM END, MAKE LEADS (F1,F3) AND A2 THE SAME POLARITY.</p>	<p>GENERATOR CONNECTIONS: FOR CW ROTATION FACING COMM END, (F1,F3) POSITIVE WILL MAKE A2 POSITIVE. FOR CCW ROTATION FACING COMM END, (F1,F3) POSITIVE WILL MAKE A1 POSITIVE.</p>	
<p>94-10-12 NO S.O. DC HILL RETRACED</p>	<p>MADE BY N STEWART 75-08-05</p> <p>RE-ISSUED CAD/DC Hill 94-10-12</p>	<p>APPROVALS FILE KC13-1</p> <p>GE MOTORS ERIE</p> <p>DIV OR DEPT LOCATION</p> <p>36A167960CA501 CONT ON SHEET SH NO.</p>

ORIGINAL FRACING

49-3131 4487 CAD
DISTR TO

C5X.A.36A167960CA501R01