

Product Information Packet

January 13, 2017

Data shown is for the current revision model #. Ensure your nameplate model # matches.

| | |
|----------------------------|-----------------------|
| Model Number: | 5KS256SAE6037A |
| Catalog Number: | V906 |
| Instruction Manual: | GEK-95351 |
| Connection Diagram: | GEM2034E-FIG3 |
| Outline Drawing: | 4002B5825PMP5317 |

| Accessory Connection Diagrams | | | |
|-------------------------------|------|------------------------------|----------|
| Bearing Thermocouple: | None | Heater: | 3027JE-1 |
| RTD: | None | Thermistor: | None |
| Thermostat: | None | Winding Thermocouple: | None |
| Bearing RTD: | None | | |

| Table of Contents | |
|-----------------------------|----|
| Specification | 01 |
| Performance Characteristics | 02 |
| Outline Drawing | 03 |
| Connection Drawing(s) | 04 |

Marks:

| | | | |
|----------------------------|-----------------------|-------------------------------|-----------|
| MODEL NUMBER: | 5KS256SAE6037A | Estimated Weight: | 350 Lbs |
| Outline Drawing: | 4002B5825PMP5317 | Time Rating: | CONT |
| Connection Diagram: | GEM2034E-FIG3 | Enclosure: | TEFC |
| Instruction Book: | GEK-95351 | Encl Construction: | SD |
| Design Code: | 25BD1163A | Ambient Max(°C): | 40 |
| Type: | KS | Alt Ambient Max(°C): | 65 |
| Frame: | L256TP10 | Insulation Class: | H |
| Phases: | 3 | NEMA Design: | B |
| Poles: | 4 | Nominal Efficiency: | 93 % |
| Output Power: | 20HP 14.8KW | Guaranteed Efficiency: | 91.7 |
| RPM: | 1775 | 3/4 Load Efficiency: | 93.7 |
| Voltage: | 230/460 | KVA Code: | G |
| Hertz: | 60 | Max KVAR: | 6.2 |
| Amps - FL: | 47.6/23.8 | Power Factor: | 84.5 |
| Service Factor: | 1.15 | Bearing - DE: | 7309 |
| Alt Service Factor: | 1.00 | Bearing - ODE: | 6209-2ZC3 |

Enclosure is Totally Enclosed Fan-Cooled

Stamped Nameplate Notes:

PREMIUM EFFICIENT MOTOR
 ROT CCW FACING ODE LEAD/PH SEQUENCE 1-2-3/1-2-3
 HTR LDS H 115V 60W
 SEVERE DUTY
 INVERTER DUTY PER NEMA MG1 PART 31
 ALTERNATE RATING FOR PWM CONTROL:
 1.0 SF VAR TORQUE RANGE 20-60 HZ
 50HZ DATA: 15 HP 190/380 V WITH FLA-43.6/21.8 A

Additional Information:

4P - TP EXTN
 C/BOX 137 CU IN-1.25 NPT
 HEATER LEADS EXIT WITH MOTOR LEADS
 E/SHLD GROUND STUD MTD ON DE C/BOX SIDE
 RCF 5000 CPM, STATIC DEFLECTION .0014 INCHES &
 CENTER OF GRAVITY 10.75 INCHES
 HOLLOW SHAFT HIGH THRUST
 LEADS NUMBERED 1,2,3 - CCW ROTN FROM ODE
 OIL RESISTANT SLEEVING ON LEADS
 BEARING LIFE 8760 HOURS AT 2564 LB THRUST
 COUPLING NOT INCLUDED IN BOM, WILL BE
 ORDERED SEPERATELY
 FCSD STOCK 05/12/2015
 ENGINEERED BY: BALASUBRAMANIANH

Performance Characteristics

1st Winding 1st Connection

Design: 25BD1163A

Marks:

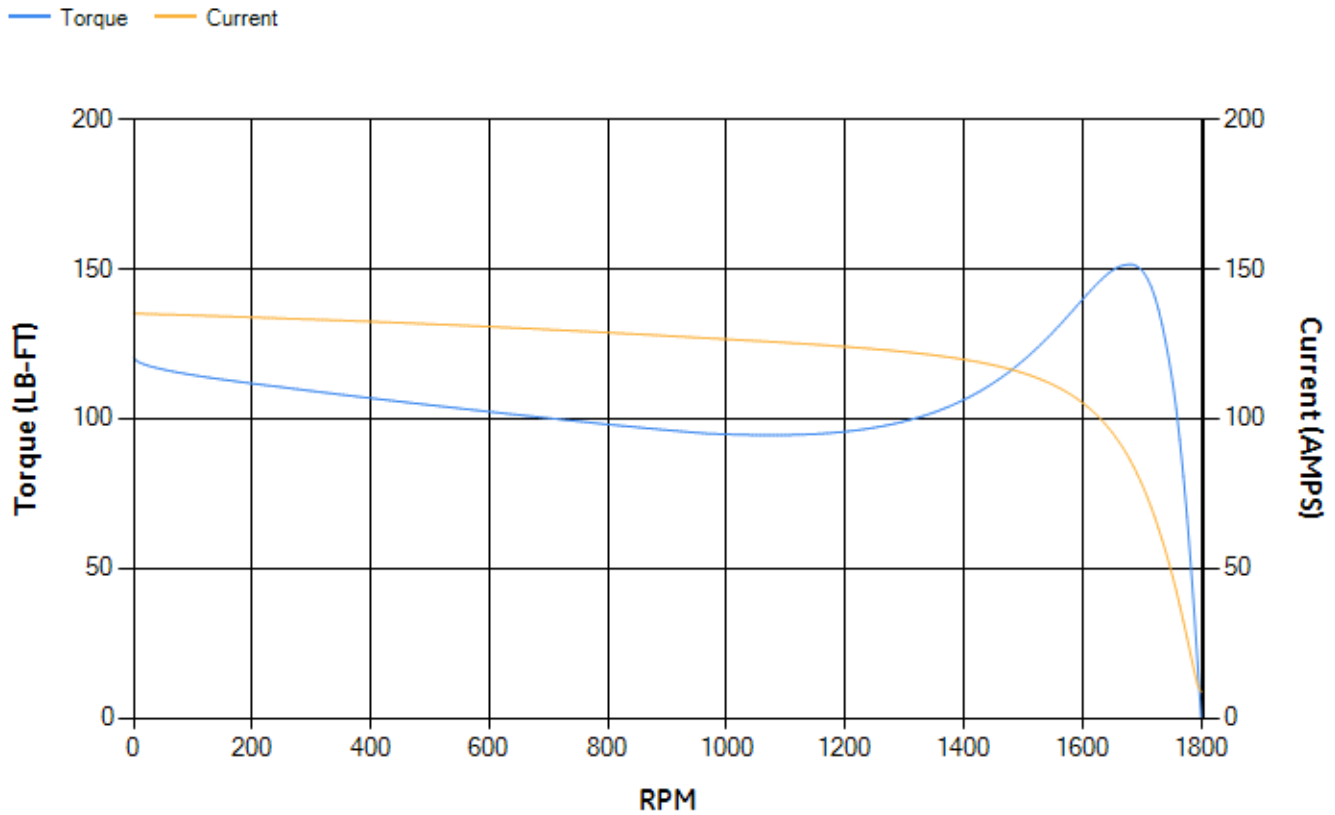
| LOAD % | 125.0 | 115.0 | 100.0 | 75.0 | 50.0 | 25.0 | 0.0 |
|--------|-------|-------|-------|-------|-------|-------|------|
| % EFF | 92.13 | 92.56 | 93.31 | 93.72 | 93.6 | 91.02 | 0.00 |
| % PF | 86.1 | 85.75 | 84.73 | 80.95 | 71.89 | 49.85 | 4.4 |
| AMPS | 29.5 | 27.12 | 23.68 | 18.5 | 13.91 | 10.31 | 8.62 |

| | | | | | |
|--------------------|--------|--------------------|--------|--------------------|--------|
| TORQ(FL)#FT | 59.21 | TORQ(LR)%FL | 203.53 | TORQ(BD)%FL | 254.91 |
| AMPS(LR) | 135.12 | PF AT START | 0.45 | | |

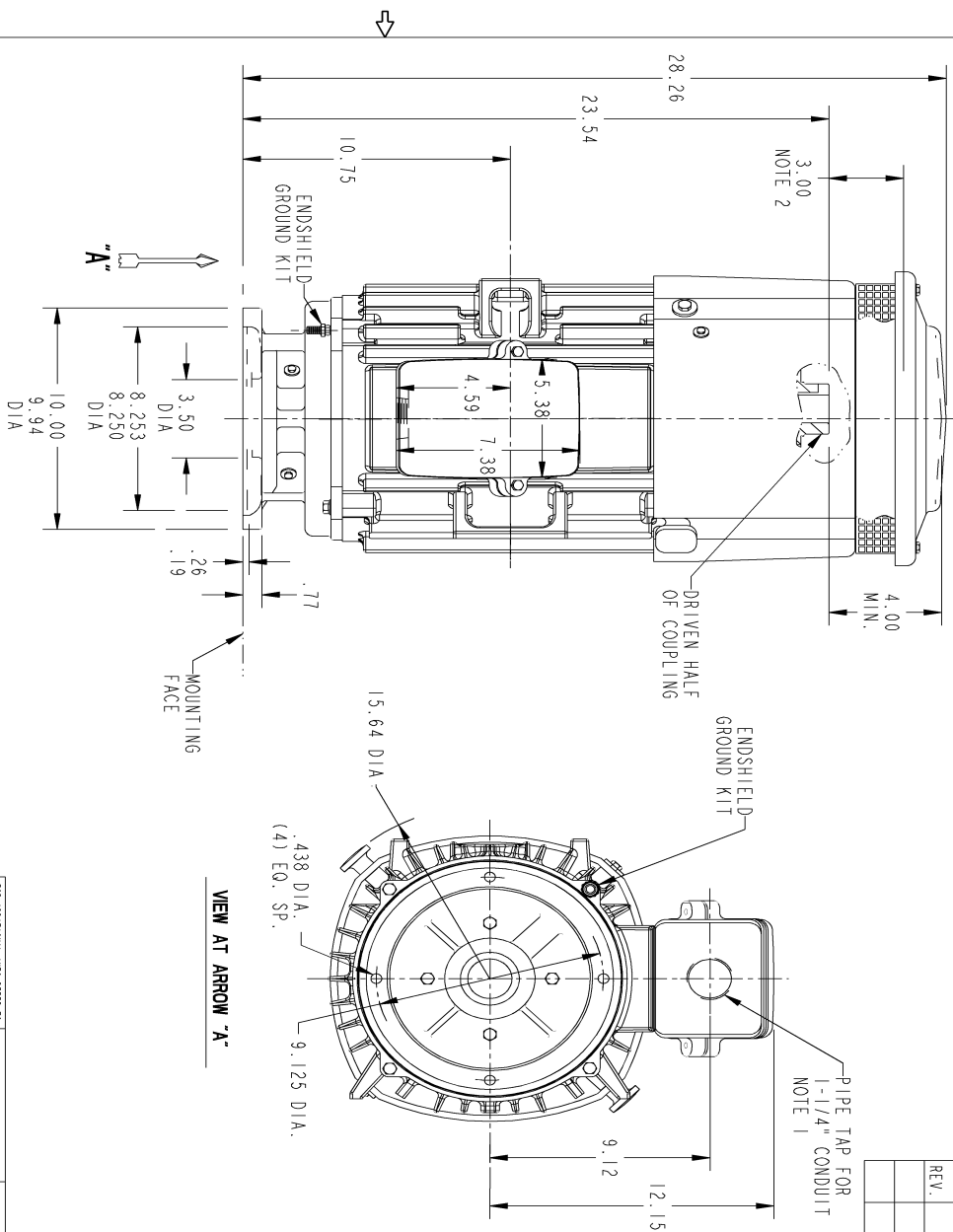
This motor is capable of two cold or one hot start with a maximum connected load inertia of 653 Lb-Ft Sq (27.49 Kg-meter Sq)at 100% voltage, where the load torque varies with the square of the speed. Acceleration time with maximum inertia and the above load type is 43 seconds. Safe stall time at 100% voltage is 98 seconds cold, 62 seconds hot. Rotor inertia is 3.04 Lb-Ft Sq (0.13 Kg-meter Sq).

| | | | |
|---------------------------|-------|---------------------------|-------|
| Open Circuit A-C: | 0.483 | Short Circuit D-C: | 0.014 |
| Short Circuit A-C: | 0.024 | X/R Ratio: | 5.127 |
| Stator Slots: | 48 | Rotor Slots: | 40 |

Speed Torque Current Curve (First Connection, First Speed)

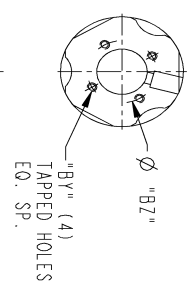


Marks:



| REV. | DESCRIPTION | DATE | APPROVED |
|------|-------------|------|----------|
| | | | |
| | | | |

SIZE DRAWING NO. **B** REV. SHEET **0** 4002B5825PMP5317

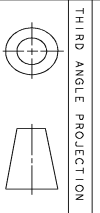


DRIVEN HALF OF COUPLING

| COUPLING KIT | RPM | "BY" | "BZ" | BORE DIA. | "BX" | KEYWAY "W" | "D" |
|--------------|--------|--------|-------|-----------|-------|------------|------|
| | | | | | | | |
| GR. 1 | GR. 8 | 1/4-20 | 1.750 | 1.252 | 1.252 | 375 | .188 |
| GR. 2 | GR. 9 | 1/4-20 | 1.750 | 1.252 | 1.252 | 375 | .188 |
| GR. 3 | GR. 10 | #10-32 | 1.375 | 1.002 | 1.002 | 250 | .125 |
| GR. 4 | GR. 11 | #10-32 | 1.375 | 1.001 | 1.001 | 250 | .125 |
| GR. 5 | GR. 12 | #10-32 | 1.375 | .877 | .877 | 250 | .125 |
| GR. 6 | GR. 12 | #10-32 | 1.375 | .876 | .876 | 250 | .125 |
| GR. 7 | GR. 14 | 1/4-20 | 1.750 | .752 | .752 | 375 | .188 |
| GR. 8 | GR. 8 | 1/4-20 | 1.750 | .751 | .751 | 375 | .188 |
| GR. 9 | GR. 9 | 1/4-20 | 1.750 | 1.251 | 1.251 | 375 | .188 |
| GR. 10 | GR. 10 | #10-32 | 1.375 | 1.001 | 1.001 | 250 | .125 |
| GR. 11 | GR. 11 | #10-32 | 1.375 | .877 | .877 | 250 | .125 |
| GR. 12 | GR. 12 | #10-32 | 1.375 | .876 | .876 | 250 | .125 |
| GR. 14 | GR. 14 | 1/4-20 | 1.750 | 1.251 | 1.251 | 375 | .188 |

4002B5528AB BOLTED OR SELF-RELEASE
4002B5528AA NON-REVERSE

NOTE 1: CONDUIT BOX MAY BE ASSEMBLED WITH ENTRANCE UP, DOWN, OR TO EITHER SIDE.
NOTE 2: THE TOTAL HEIGHT OF PUMP SHAFT & LOCKING NUT ABOVE TOP OF COUPLING, MUST NOT EXCEED THIS DIMENSION.



Part must conform to SI 800000 Sect. 4, Assembly Procedure

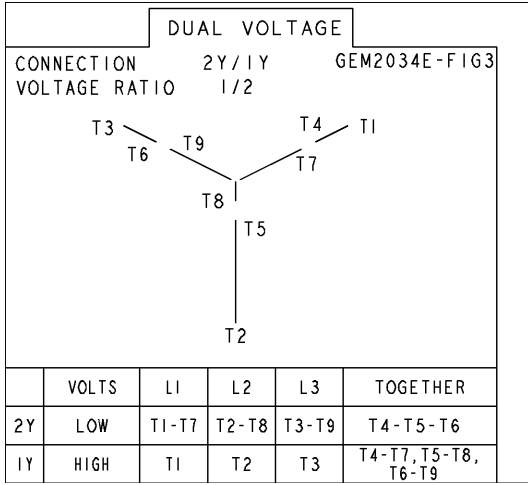
| FOR ADDITIONAL INFO REFER TO: | SIGNATURES | DATE |
|-------------------------------|------------|------------|
| DETAIL | KARTHIK | 05/17/2013 |
| ENGR | KARTHIK | 05/17/2013 |
| ISSUED | KARTHIK | 05/17/2013 |

GE Motors GENERAL ELECTRIC COMPANY
INDUCTION MOTOR OUTLINE
HOLLOW SHAFT - HIGH THRUST (BD-10) EXT. ON DE SIDE
L250T10 TFC. P BASE VERTICAL
4002B5825PMP5317

SCALE: B SHEET 1 OF 1

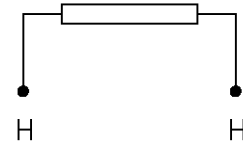
Marks:

Connection Diagram
GEM2034E-FIG3



Heater Connection
3027JE-1

FIG. 1
HEATER CONN.



| | | |
|--------------|----|----|
| CONTROL | L1 | L2 |
| VOLTAGE ONLY | H | H |