

Product Information Packet

November 9, 2016

Data shown is for the current revision model #. Ensure your nameplate model # matches.

Model Number:	5KS326SAA218D8
Catalog Number:	M9918
Instruction Manual:	GEI-56128
Connection Diagram:	GEM2034E-FIG7
Outline Drawing:	239C6000AF

Accessory Connection Diagrams			
Bearing Thermocouple:	None	Heater:	None
RTD:	None	Thermistor:	None
Thermostat:	None	Winding Thermocouple:	None
Bearing RTD:	None		

Table of Contents

Specification	01
Performance Characteristics	02
Outline Drawing	03
Connection Drawing(s)	04
Spare parts	05



Marks:

MODEL NUMBER:	5KS326SAA218D8	Estimated Weight:	710 Lbs
Outline Drawing:	239C6000AF	Time Rating:	CONT
Connection Diagram:	GEM2034E-FIG7	Enclosure:	TEFC
Instruction Book:	GEI-56128	Encl Construction:	X\$D
Design Code:	32BD1183A	Ambient Max(°C):	40
Type:	KS	Alt Ambient Max(°C):	60
Frame:	326TS	Insulation Class:	H
Phases:	3	NEMA Design:	B
Poles:	4	Nominal Efficiency:	94.5 %
Output Power:	50HP 37KW	Guaranteed Efficiency:	94.1
RPM:	1780	3/4 Load Efficiency:	94.8
Voltage:	460	KVA Code:	G
Hertz:	60	Max KVAR:	17.7
Amps - FL:	60.8	Power Factor:	81.5
Service Factor:	1.15	Bearing - DE:	6312ZC3
Alt Service Factor:	1.00	Bearing - ODE:	6312ZC3

Enclosure is Totally Enclosed Fan-Cooled

Stamped Nameplate Notes:

STAMP NP249A5564P051 AS BELOW:
 MODEL:5KS326SAA218D8 S/N: XXX
 CSA CERTIFIED CSA09.2216219 FOR EX NA IIC 200 C GC
 CL 1 ZONE2 AEX NA IIC 200C;CL 1 DIV2 GRP ABCD 200C
 IN -40C <= AMB <= 40C, 1.0 SF ON SINE-WAVE PWR
 SURF TEMP 260C AT 1.15SF ON SINE-WAVE PWR
 OR 200C VT OR 230C CT OR 200C CHP PWM CONTROL
 ALTERNATE RATING FOR PWM CONTROL 1.0SF 40C AMB
 VT 0 - 60 HZ, CT 10-60 HZ, CHP 60-90 HZ.

Additional Information:

4P - TS EXTN
 346 CU IN - 3.00" NPT
 OIL RESISTANT SLEEVING ON LEADS
 F1 MOUNTING

Performance Characteristics

1st Winding 1st Connection

Design: 32BD1183A

Marks:

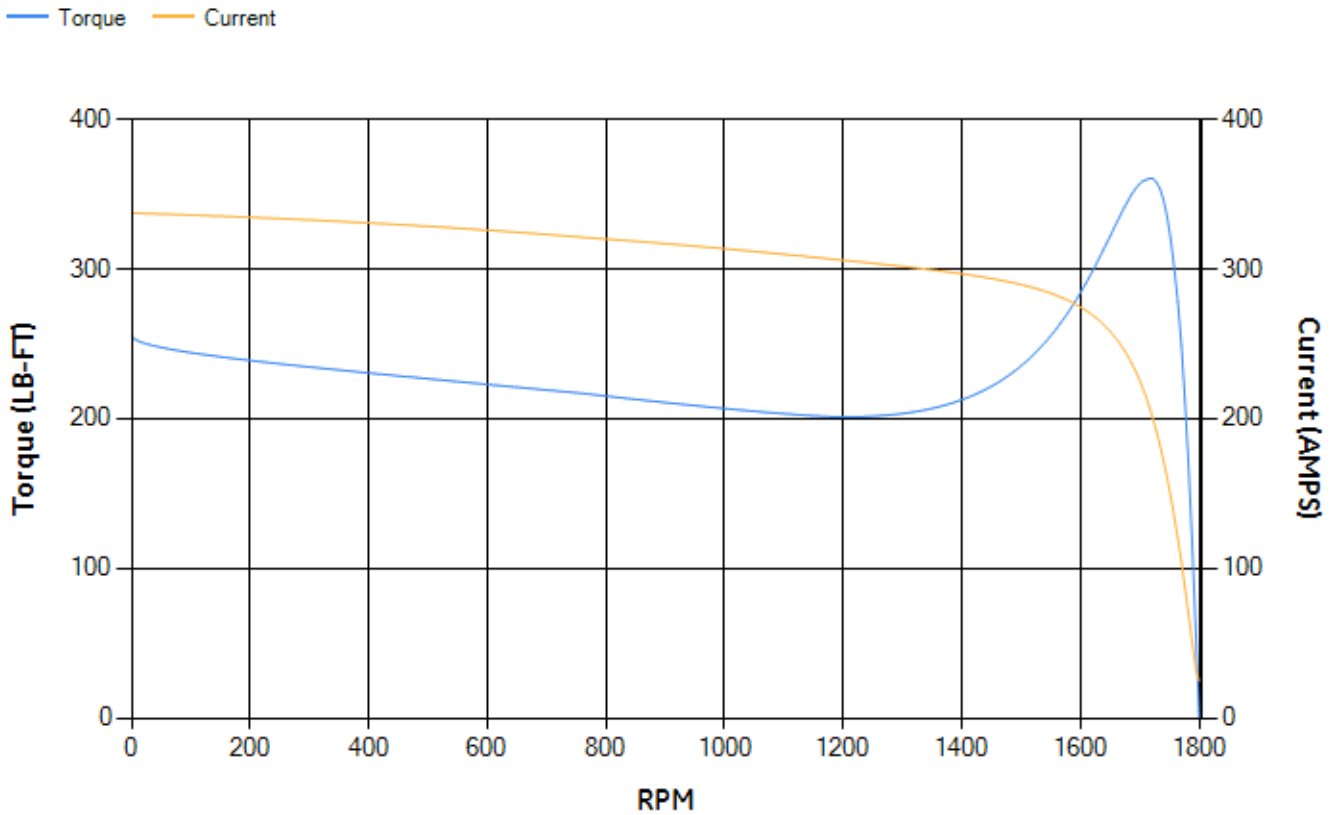
LOAD %	125.0	115.0	100.0	75.0	50.0	25.0	0.0
% EFF	93.77	94.07	94.64	94.79	94.49	91.94	0.00
% PF	83.05	82.58	81.3	76.84	66.75	44.41	3.34
AMPS	75.11	69.27	60.69	48.19	37.1	28.65	24.69

TORQ(FL)#FT	147.64	TORQ(LR)%FL	173.12	TORQ(BD)%FL	243.23
AMPS(LR)	337.37	PF AT START	0.34		

This motor is capable of two cold or one hot start with a maximum connected load inertia of 1057 Lb-Ft Sq (44.5 Kg-meter Sq)at 100% voltage, where the load torque varies with the square of the speed. Acceleration time with maximum inertia and the above load type is 34 seconds. Safe stall time at 100% voltage is 78 seconds cold, 40 seconds hot. Rotor inertia is 8.61 Lb-Ft Sq (0.36 Kg-meter Sq).

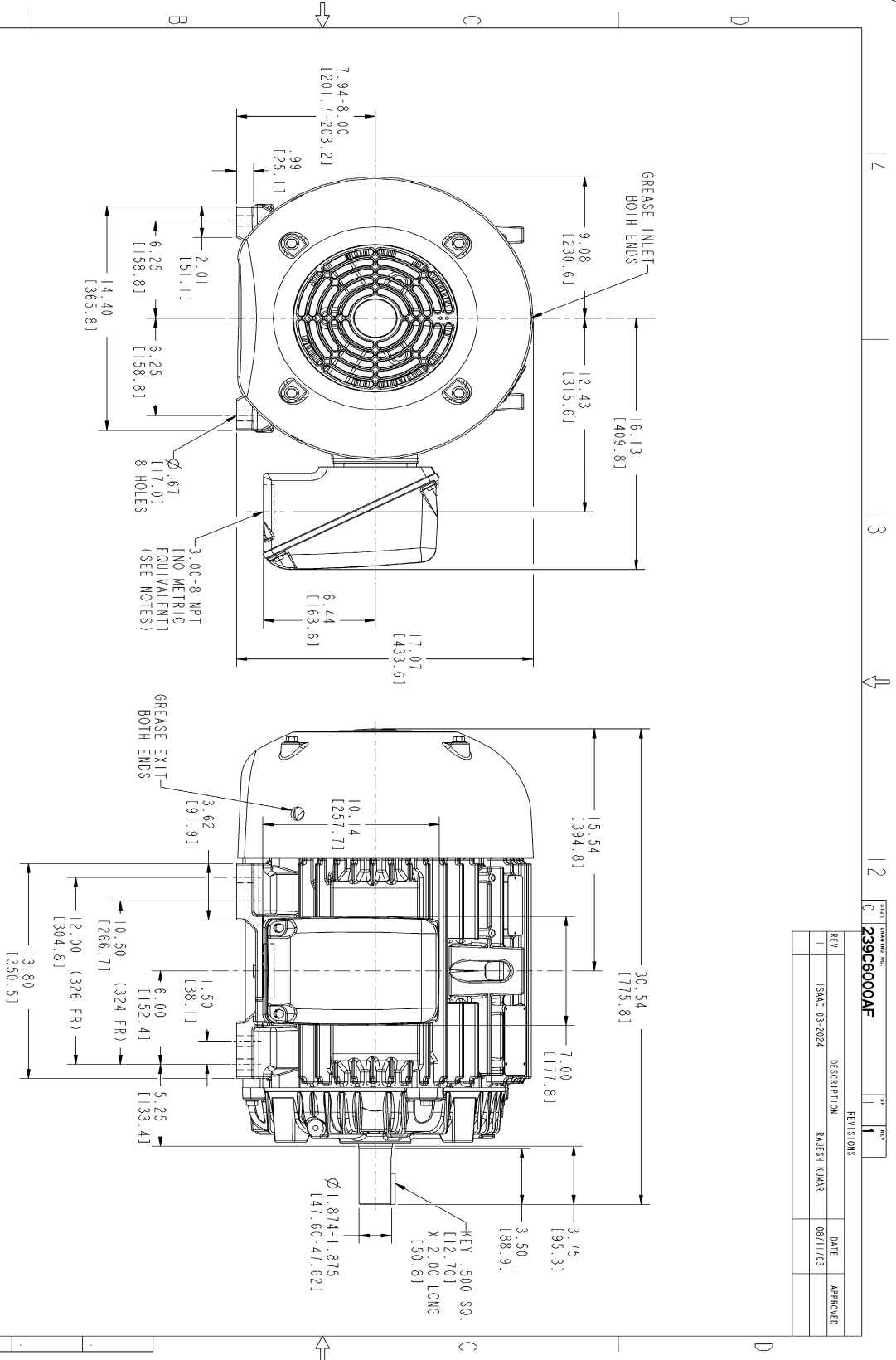
Open Circuit A-C:	0.511	Short Circuit D-C:	0.023
Short Circuit A-C:	0.031	X/R Ratio:	8.712
Stator Slots:	48	Rotor Slots:	38

Speed Torque Current Curve (First Connection, First Speed)



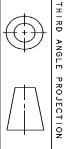
NAME: 103016807 OBJECT: 239C6000AF DATE: 12-Aug-03 15:47:45

Marks:



- NOTES:
- CONDUIT BOX MAY BE PLACED WITH THE ENTRANCE DOWN, UP OR ON EITHER SIDE.
 - F-1 ASM AS SHOWN.
 - F-2 ASM HAS CONDUIT BOX ON OPPOSITE SIDE.
 - BRACKETED DIMENSIONS ARE METRIC (MILLIMETERS).

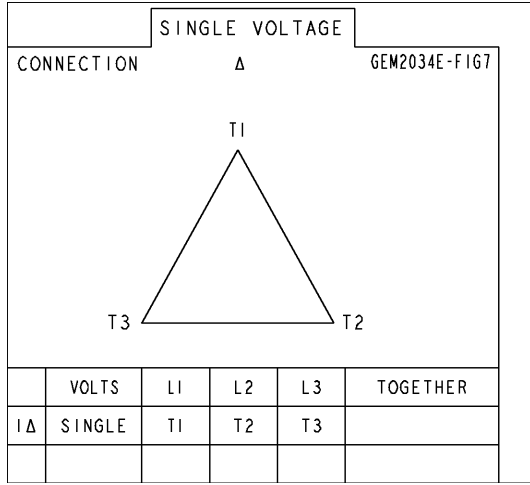
DRAWING NO.		REVISIONS		DATE		APPROVED	
239C6000AF							
REV.	DESCRIPTION	RAJESH KUMAR	08/11/03				



SIGNATURES	DATE	GENERAL ELECTRIC COMPANY Fort Wayne, Indiana	
DESIGN: WABRKL	03/13/02	OUTLINE 324/326TS TFFC 346 CU. IN. CONDUIT BOX	
DRAWN: MANIVANNAN	03/13/02		
CHECKED: WABRKL	03/13/02	APPLIED PRACTICES:	
SCALE: 0.250		REF. NO.:	
SHEET DRAWING		SHEET NO. 1	
DISTRIBUTION: MMP		REV: 1	

Marks:

Connection Diagram
GEM2034E-FIG7



End shield Assembly		
Part Description	DE Side Part#	ODE Side Part#
End Shield	115E4200AA1	115E4200LA1
Bearing	235A2609AA01	235A2609AA01
Slinger/Inproseal	149C4399G04	149C4399G04

Fan & Fan Cover Assembly	
Part Description	Part#
Fan	159C6900G04
Fan Cover	128D6800AA1

Conduit & Accessories Box Assembly	
Part Description	Part#
Conduit Box	149C4429AA2

Mechanical Accessories	
Part Description	Part#
Brake	
Tachometer	