

Product Information Packet

November 8, 2016

Data shown is for the current revision model #. Ensure your nameplate model # matches.

Model Number:	5KS405SAA204D10
Catalog Number:	M9779
Instruction Manual:	GEI-56128
Connection Diagram:	GEM2034E-FIG7
Outline Drawing:	239C6400AA

Accessory Connection Diagrams

Bearing Thermocouple:	None	Heater:	None
RTD:	None	Thermistor:	None
Thermostat:	None	Winding Thermocouple:	None
Bearing RTD:	None		

Table of Contents

Specification	01
Performance Characteristics	02
Outline Drawing	03
Connection Drawing(s)	04
Spare parts	05



imagination at work

Marks:

MODEL NUMBER:	5KS405SAA204D10	Estimated Weight:	1440 Lbs
Outline Drawing:	239C6400AA	Time Rating:	CONT
Connection Diagram:	GEM2034E-FIG7	Enclosure:	TEFC
Instruction Book:	GEI-56128	Encl Construction:	X\$D
Design Code:	40BD1112B	Ambient Max(°C):	40
Type:	KS	Alt Ambient Max(°C):	65
Frame:	405T	Insulation Class:	H
Phases:	3	NEMA Design:	B
Poles:	4	Nominal Efficiency:	95.4 %
Output Power:	100HP 74KW	Guaranteed Efficiency:	95.0
RPM:	1785	3/4 Load Efficiency:	95.6
Voltage:	575	KVA Code:	G
Hertz:	60	Max KVAR:	35.9
Amps - FL:	97.5	Power Factor:	80.5
Service Factor:	1.25	Bearing - DE:	6316ZC3S0
Alt Service Factor:	1.00	Bearing - ODE:	6316ZC3S0

Enclosure is Totally Enclosed Fan-Cooled

Stamped Nameplate Notes:

SF AMPS 119.6
 STAMP NP249A5564P051 AS BELOW:
 MODEL:5KS405SAA204D10 S/N: XXX
 CSA CERTIFIED CSA09.2216219 FOR EX NA IIC 200 C GC
 CL 1 ZONE2 AEX NA IIC 200C;CL 1 DIV2 GRP ABCD 200C
 IN -40C <= AMB <= 40C, 1.0 SF ON SINE-WAVE PWR
 SURF TEMP 260C AT 1.25SF ON SINE-WAVE PWR
 OR 200C VT OR 230C CT OR 200C CHP PWM CONTROL
 ALTERNATE RATING FOR PWM CONTROL 1.0SF 40C AMB
 VT 0-60 HZ, CT 6.7-60 HZ, CHP 60-90 HZ.

Additional Information:

4P - T EXTN
 C/BOX 700 CU IN - 3.00" NPT
 OIL RESISTANT SLEEVING ON LEADS
 F1 MOUNTING

Performance Characteristics

1st Winding 1st Connection

Design: 40BD1112B**Marks:**

LOAD %	125.0	115.0	100.0	75.0	50.0	25.0	0.0
% EFF	94.96	95.17	95.62	95.58	95.16	92.65	0.00
% PF	82.41	81.97	80.72	76.27	66.16	43.84	3.18
AMPS	119.59	110.38	97.01	77.04	59.47	46.09	40.04

TORQ(FL)#FT 294.21
AMPS(LR) 476.36

TORQ(LR)%FL 138.39
PF AT START 0.29

TORQ(BD)%FL 228.12

This motor is capable of two cold or one hot start with a maximum connected load inertia of 2447 Lb-Ft Sq (103.02 Kg-meter Sq) at 100% voltage, where the load torque varies with the square of the speed. Acceleration time with maximum inertia and the above load type is 49 seconds. Safe stall time at 100% voltage is 106 seconds cold, 59 seconds hot. Rotor inertia is 21.75 Lb-Ft Sq (0.92 Kg-meter Sq).

Open Circuit A-C: 0.708

Short Circuit D-C: 0.033

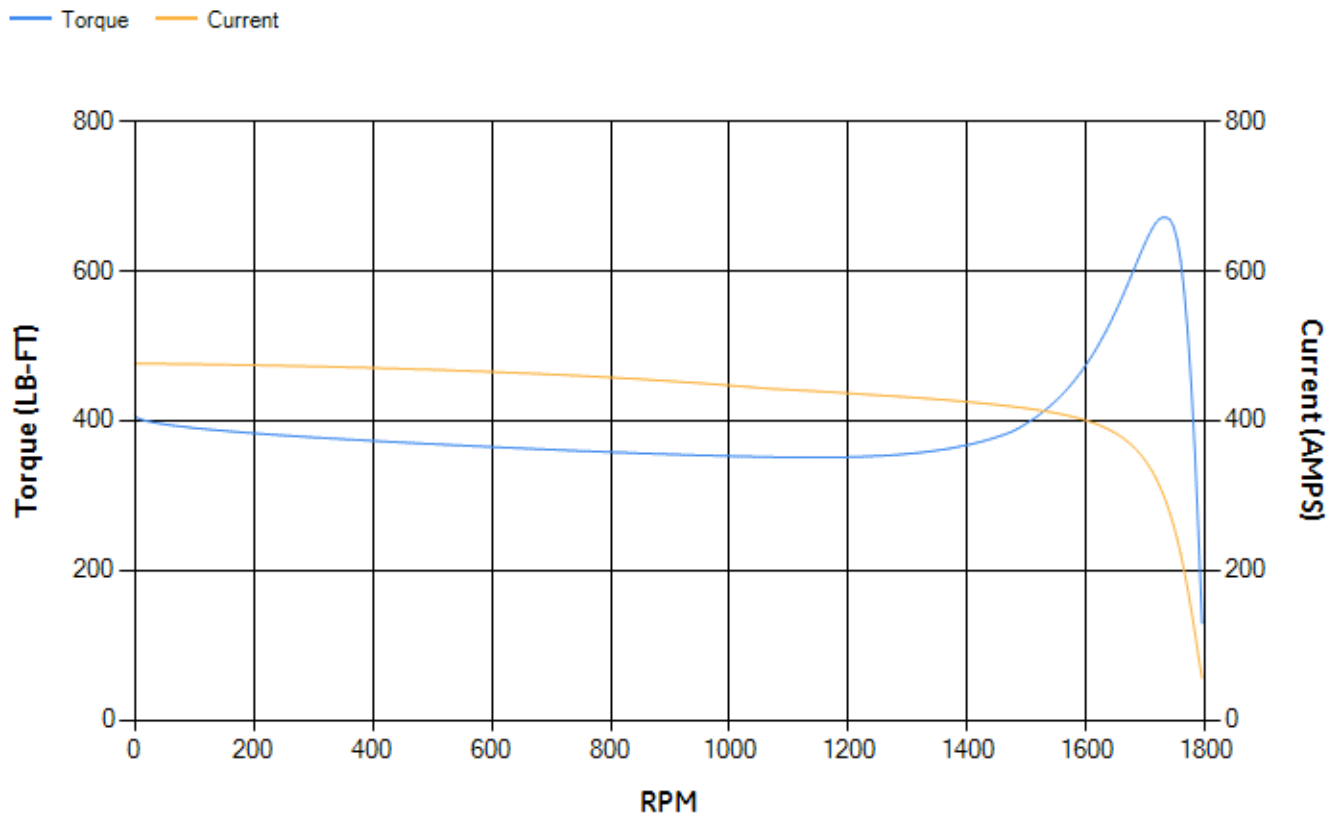
Short Circuit A-C: 0.05

X/R Ratio: 12.575

Stator Slots: 72

Rotor Slots: 58

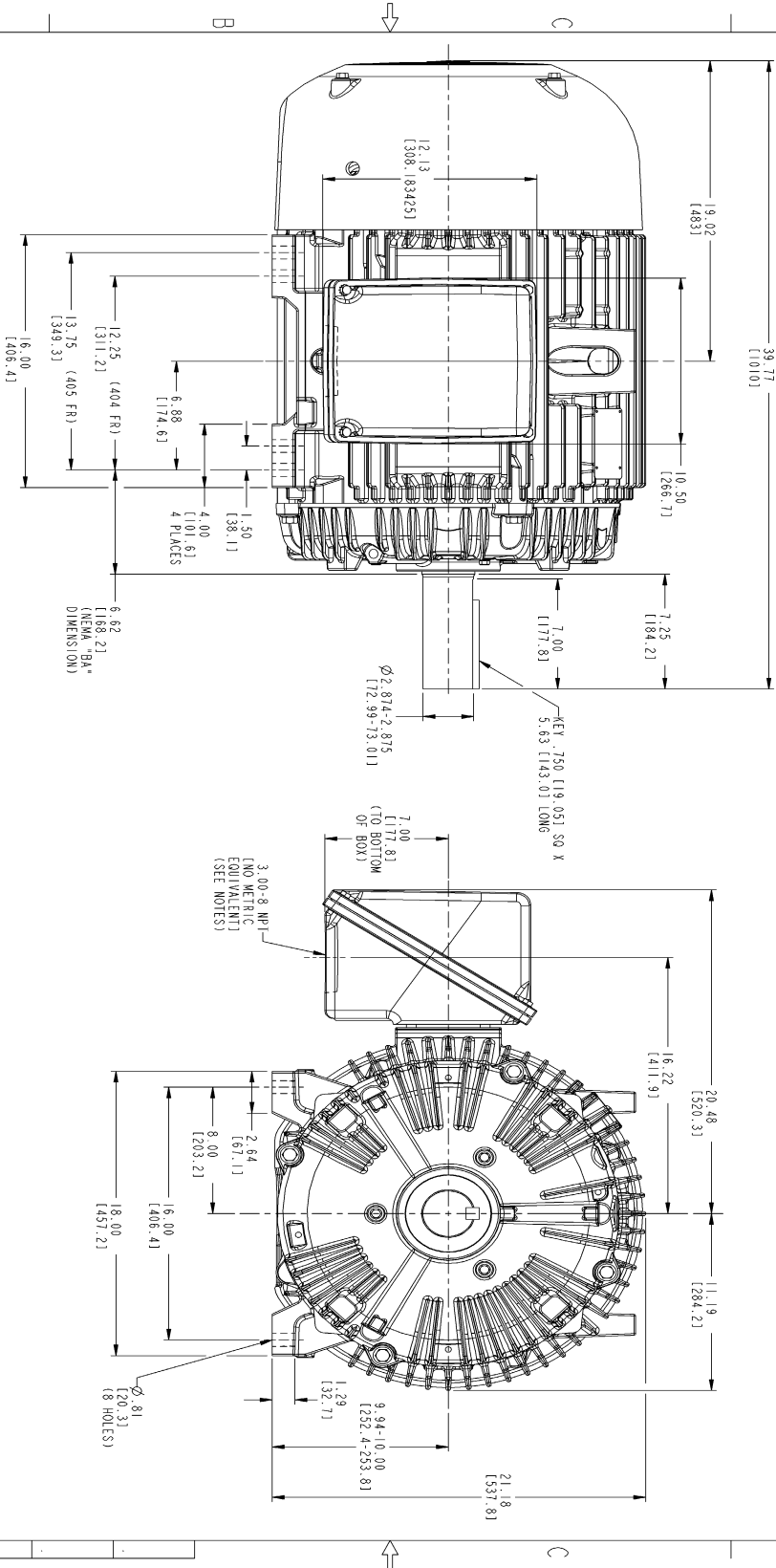
Speed Torque Current Curve (First Connection, First Speed)



NAME: 103016807 OBJECT: 239C6400AA DATE: 08-Aug-03 09:32:41

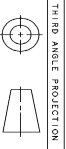
Marks:

SIZE DRAWING NO.		REV	REVISIONS		DATE	APPROVED
239C6400AA		4				
REV.	DESCRIPTION					
1	MODEL PFC PLUG, UPDATED END SHIELD & FAN COVER	05/23/01	D. E. BAIR			
2	ECN 01-1787	06/13/01	C. ALTH			
3	ISMAC 02-0273 MAGRAM	02/04/02				
4	ISMAC 03-2024 RAJESH KUMAR	08/06/03				



NOTES:

1. CONDUIT BOX MAY BE PLACED WITH THE ENTRANCE DOWN, UP OR ON EITHER SIDE.
2. F-1 ASSEMBLY AS SHOWN.
3. F-2 ASSEMBLY HAS CONDUIT BOX ON OPPOSITE SIDE.
4. BRACKETED DIMENSIONS ARE METRIC (MILLIMETERS).



THIRD ANGLE PROJECTION

GE Industrial Systems

GENERAL ELECTRIC COMPANY
Fort Wayne, Indiana

OUTLINE

404/405T TEFC

700 CU. IN. CONDUIT BOX

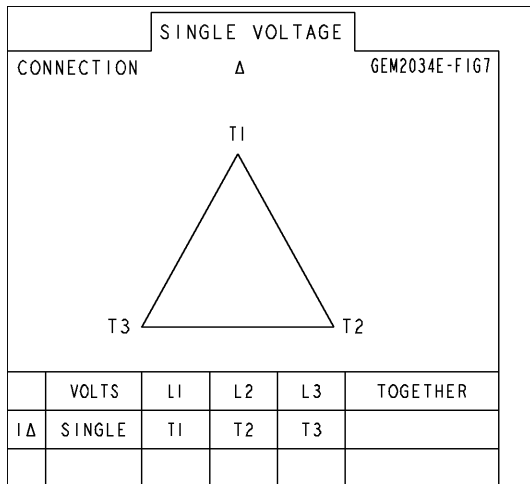
239C6400AA

SCALE: 0.220 REF. NO.: SHEET 1 OF 1

DISTRIBUTION: MMP

Marks:

Connection Diagram
GEM2034E-FIG7



End shield Assembly		
Part Description	DE Side Part#	ODE Side Part#
End Shield	115E4304AA1	115E4304LL1
Bearing	235A2618AA04	235A2618AA04
Slinger/Inproseal	149C4399G06	149C4399G06

Fan & Fan Cover Assembly	
Part Description	Part#
Fan	159C7100AA2
Fan Cover	128D6832AA1

Conduit & Accessories Box Assembly	
Part Description	Part#
Conduit Box	118D4408AD2

Mechanical Accessories	
Part Description	Part#
Brake	
Tachometer	

